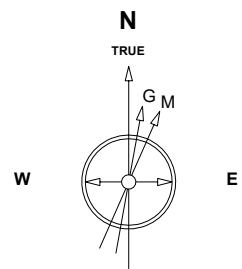


Great Western Operating Company, LLC



Apr-14-2017
IGRF Model [1900.0-2020.0] Dip: 66.51 deg Field: 52184.6 nT
Lat: N39 58 49.6308 Long: W104 50 52.6468 Elev: 4972.00 ft
Magnetic North is 8.24 deg East of TRUE North
To correct azimuth from Magnetic to TRUE add 8.24 deg

Location	Colorado	Slot	N06 - Brant LE 08-119HN
Field	Wattenburg	Well	Brant LE 08-119HN
Installation	Brant	Wellbore	Brant LE 08-119HN (PWB)

Created by admin
Date plotted 25-Jan-2019
Plot reference is Brant LE 08-119HN (PWB).
Ref wellpath is Brant LE 08-119HN (PWP#1).
Coordinates are in Feet reference N06 - Brant LE 08-119HN.
True Vertical Depths are reference Rig Datum.
Measured Depths are reference Rig Datum.
Rig Datum: Planned Datum #1
Rig Datum to Mean Sea Level: 4992.00 ft.
Plot North is aligned to TRUE North.



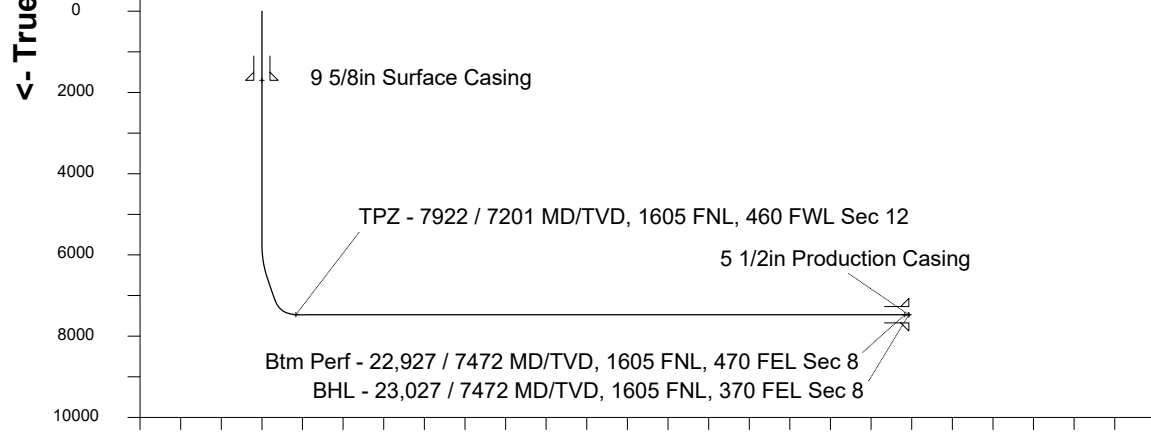
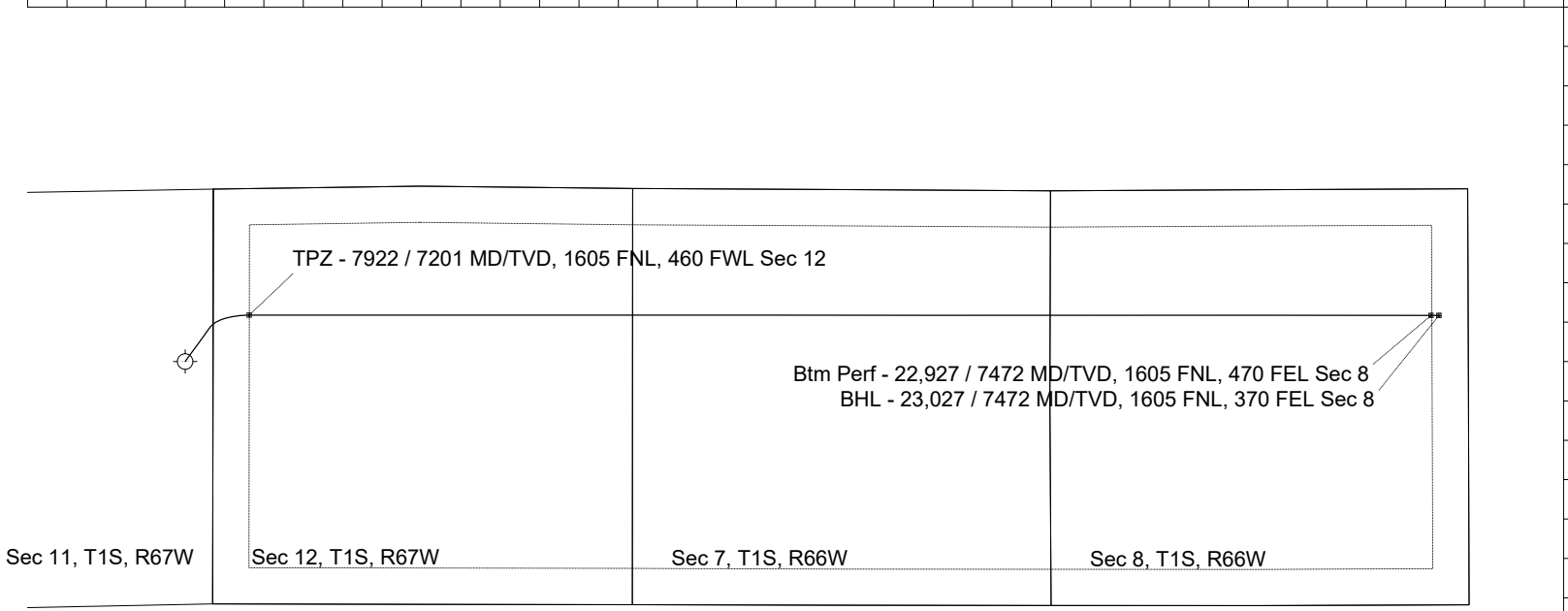
Scale 1 cm = 1000 ft

<- True Vertical Depth (Feet)

4000
3000
2000
1000
0
-1000
-2000
-3000
-4000
-5000
-6000

<- North(Feet)

Scale 1 cm = 500 ft



Scale 1 cm = 1000 ft

Vertical Section (Feet) ->

Azimuth 87.90 with reference 0.00 N, 0.00 E from N06 - Brant LE 08-119HN

WELL PROFILE DATA								
Point	MD	Inc	Azi	TVD	North	East	deg/100ft	V. Sect
Tie on	0.00	0.00	0.00	0.00	S 0.00	W 0.00		0.00
KOP	5696.50	0.00	36.05	5696.50	S 0.00	W 0.00	0.00	0.00
End of Build	6696.52	30.00	36.05	6651.44	N 206.87	E 150.59	3.00	158.08
End of Hold	7259.35	30.00	36.05	7138.87	N 434.40	E 316.22	0.00	331.95
Target TPZ - ...Sec 12	7922.01	90.00	90.02	7472.00	N 589.79	E 814.08	11.00	835.18
Target Btm Pe... Sec 8	22926.93	90.00	90.02	7472.00	N 585.71	E 15819.01	0.00	15829.85
End of Turn	22931.46	90.00	90.60	7472.00	N 585.68	E 15823.54	13.00	15834.37
T.D. & Target BHL...c 8	23026.70	90.00	90.60	7472.00	N 584.68	E 15918.77	0.00	15929.51