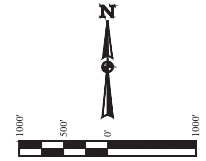
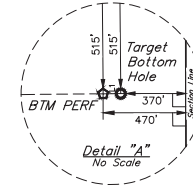


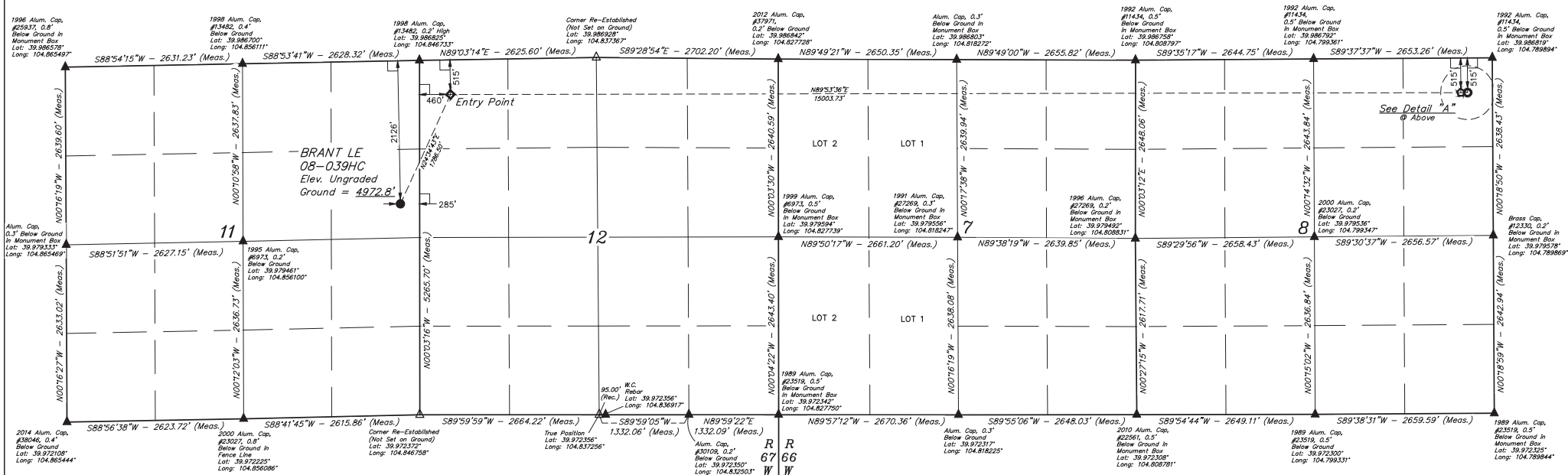
BRANT LE 08-039HC  
SE 1/4 NE 1/4, SECTION 11, T1S, R67W, 6th P.M.  
ADAMS COUNTY, COLORADO

BASIS OF BEARINGS  
BASIS OF ELEVATION

USGS COOPERATIVE BASE NETWORK CONTROL STATION,  
DESIGNATION "R 53 5026", NGS DATA SHEET LISTS THE NAVD 88  
ELEVATION AS BEING 5028 FEET.



LINE TABLE		
LINE	DIRECTION	LENGTH
L1	N89°53'36"E	100.00'



- LEGEND:**
- 90° SYMBOL
  - PROPOSED WELLHEAD
  - ENTRY POINT
  - TARGET BOTTOM HOLE
  - BTM PERF
  - ▲ SECTION CORNERS LOCATED, (NAD 83)
  - △ SECTION CORNERS RE-ESTABLISHED, (Not Set on Ground,) (NAD 83)



REV. 3 06-14-18 K.M.R. (SL/MVE)

PDOP = 1.3			
NAD 83 (SURFACE LOCATION)	NAD 83 (ENTRY POINT)	NAD 83 (BTM PERF)	NAD 83 (TARGET BOTTOM HOLE)
LATITUDE = 39°58'51.51" (39.980975)	LATITUDE = 39°59'07.54" (39.985428)	LATITUDE = 39°59'07.44" (39.985400)	LATITUDE = 39°59'07.44" (39.985400)
LONGITUDE = -104°50'58.93" (104.847859)	LONGITUDE = -104°50'42.54" (104.845094)	LONGITUDE = -104°47'29.64" (104.781367)	LONGITUDE = -104°47'28.85" (104.781208)
NAD 27 (SURFACE LOCATION)	NAD 27 (ENTRY POINT)	NAD 27 (BTM PERF)	NAD 27 (TARGET BOTTOM HOLE)
LATITUDE = 39°58'51.57" (39.980991)	LATITUDE = 39°59'07.60" (39.985444)	LATITUDE = 39°59'07.50" (39.985417)	LATITUDE = 39°59'07.50" (39.985417)
LONGITUDE = -104°50'58.03" (104.847229)	LONGITUDE = -104°50'40.44" (104.844567)	LONGITUDE = -104°47'27.54" (104.781039)	LONGITUDE = -104°47'26.46" (104.780683)

**UELTS, LLC**  
Corporate Office • 85 South 200 East  
Vernal, UT 84078 • (435) 789-1017

**UINTAH**  
REGISTERED PROFESSIONAL LAND SURVEYOR  
CHAD MEIERS, D.N.  
K.B.

DATE: 06-10-17  
SCALE: 1" = 1000'

**WELL LOCATION PLAT**