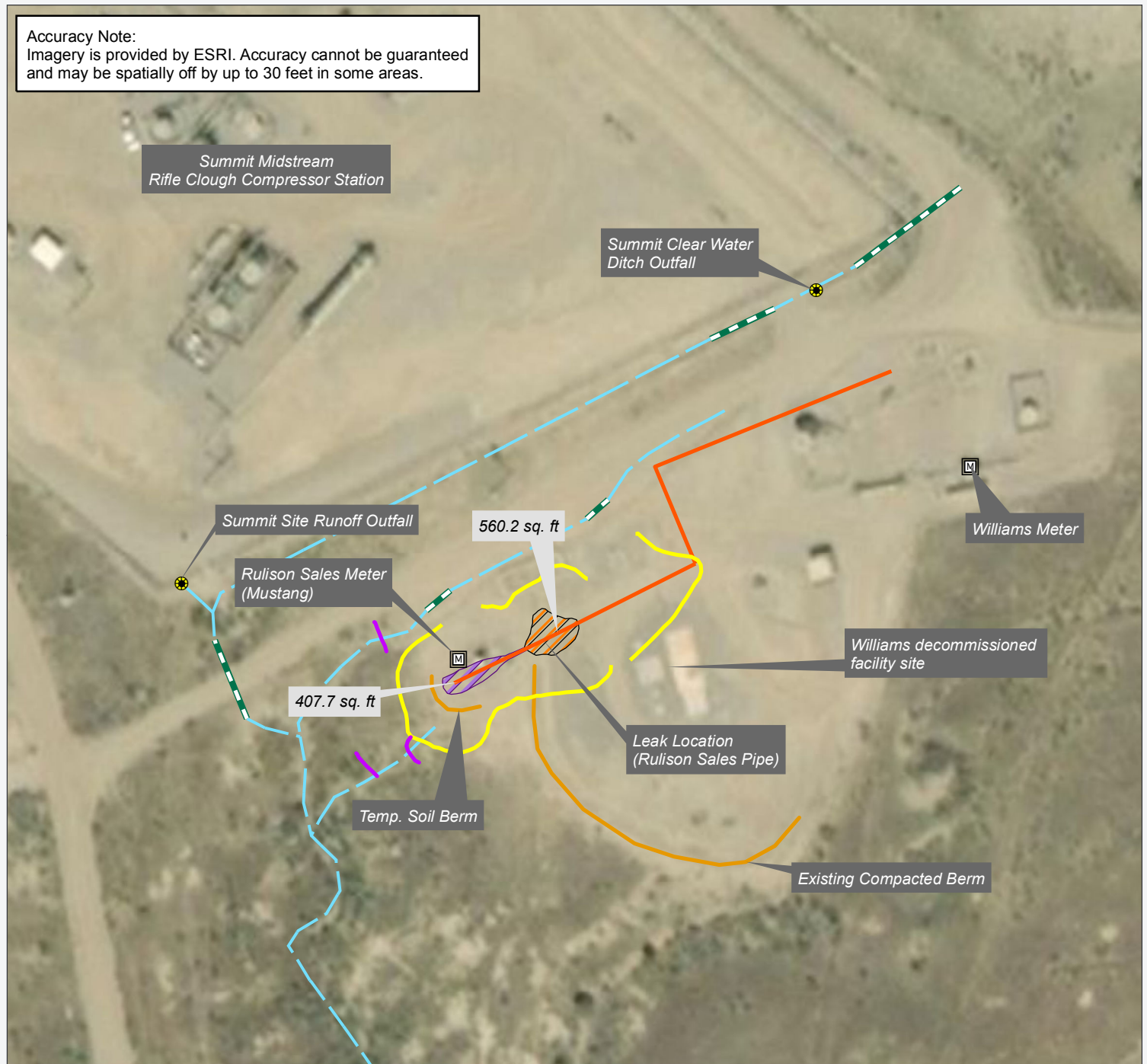


Accuracy Note:  
Imagery is provided by ESRI. Accuracy cannot be guaranteed  
and may be spatially off by up to 30 feet in some areas.



## LEGEND

- Meters
  - Summit Compressor Station Outfalls
  - Rulison Sales Pipe (Mustang)
  - Activity Area
  - Wattles
  - Culverts
  - Approximate Drainage Locations
- Excavation Areas**
- Active Pit (as of 2/4/2019) - 560.2 sq. ft.
  - Additional Excavation Area (no PID readings) - 407.7 sq. ft.

Figure 3

## Mustang Resources

### Rulison Sales Pipe Excavation Areas

#### Disclaimer:

This product is for informational purposes and may not have been prepared for, or be suitable for legal, engineering, or surveying purposes. Users of this information should review or consult the primary data and information sources to ascertain the usability of the information. The maps are distributed "AS-IS" without warranties of any kind, either expressed or implied, including but not limited to warranties of suitability to a particular purpose or use.

**SGM**  
118 W. Sixth St., Suite 200  
Glenwood Springs, CO 81601  
970.945.1004  
www.sgm-inc.com

Date: 2/7/2019  
Version: 01  
Created By: SGM  
Drawn By: RKK

0 25 50 100 Feet  
SCALE: 1" = 0 miles

