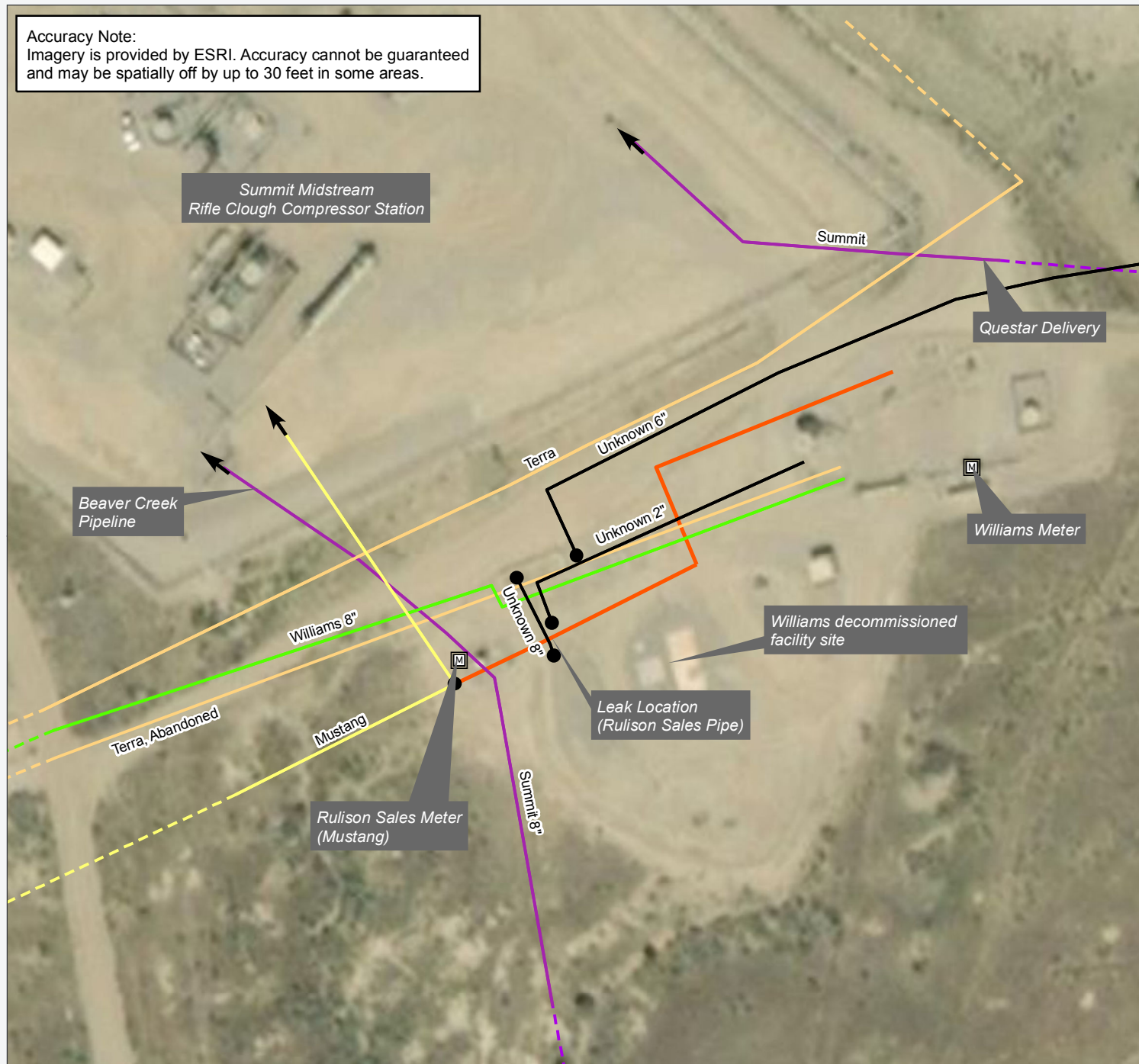


Accuracy Note:
Imagery is provided by ESRI. Accuracy cannot be guaranteed
and may be spatially off by up to 30 feet in some areas.



LEGEND

Meters

● Pipe Termination

Rulison Sales Pipe (Mustang)

Pipes (by Owner)

Mustang (Natural Gas)

Summit (Natural Gas)

Terra (Natural Gas)

Unknown/Abandoned/Legacy pipes from compressor station operations

Williams (Natural Gas)

Figure 2

Mustang Resources

Rulison Sales Pipe Area Map & Approx. Pipelines

Disclaimer:

This product is for informational purposes and may not have been prepared for, or be suitable for legal, engineering, or surveying purposes. Users of this information should review or consult the primary data and information sources to ascertain the usability of the information. The maps are distributed "AS-IS" without warranties of any kind, either expressed or implied, including but not limited to warranties of suitability to a particular purpose or use.

SGM
118 W. Sixth St., Suite 200
Glenwood Springs, CO 81601
970.945.1004
www.sgm-inc.com

Date: 2/7/2019
Version: 01
Created By: SGM
Drawn By: RKK

0 25 50 100 Feet

SCALE: 1" = 0 miles

