

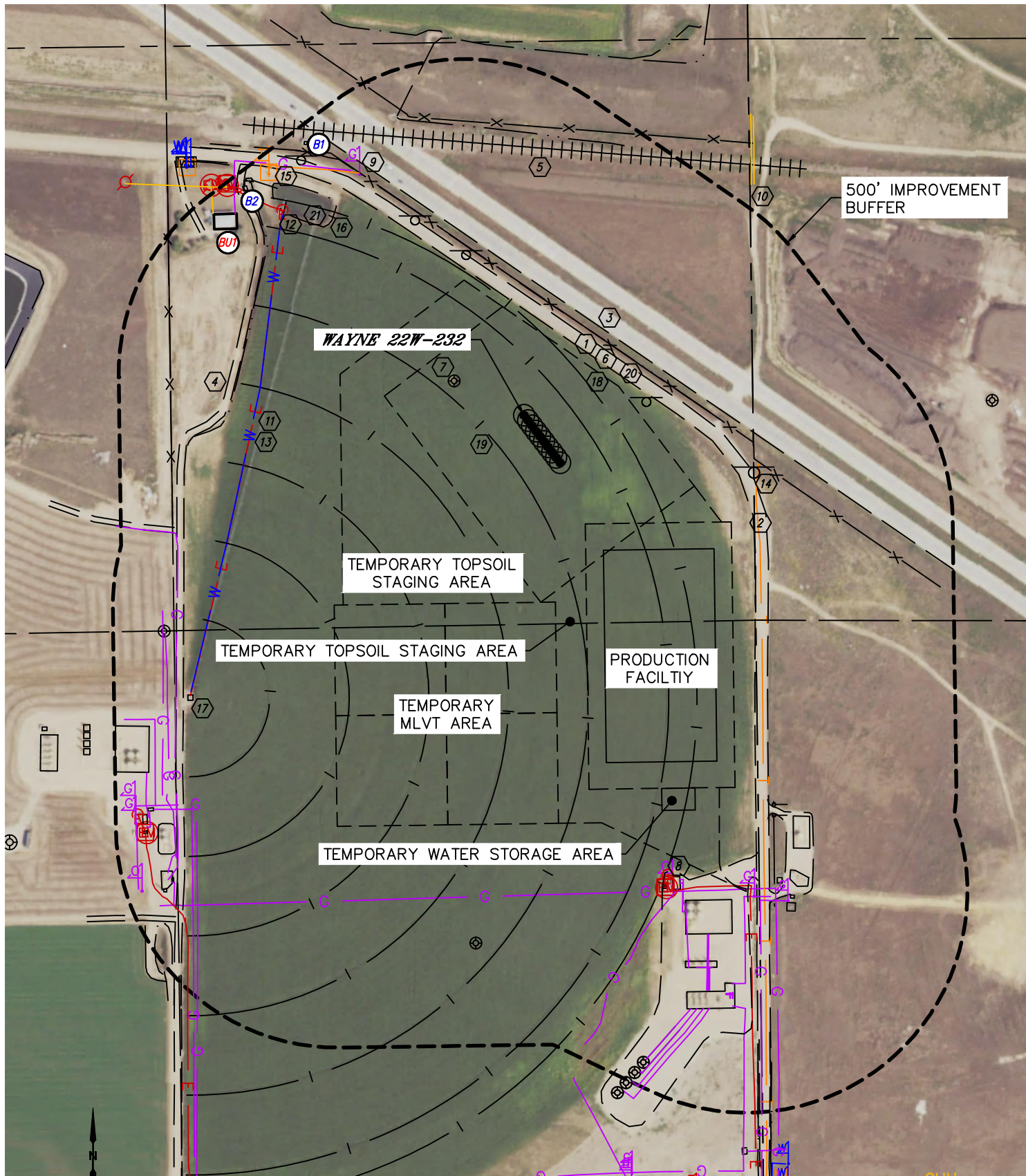


Lat40°, Inc. 6250 W. 10th Street, Unit 2, Greeley, CO 970-515-5294

LOCATION DRAWING

WAYNE 5N64W22 1-10 PAD

SECTION: 22
TOWNSHIP: 5N
RANGE: 64W
6TH. P.M.
WELD COUNTY, CO





Lat40°, Inc. 6250 W. 10th Street, Unit 2, Greeley, CO 970-515-5294

LOCATION DRAWING

WAYNE 5N64W22 1-10 PAD

SECTION: 22
TOWNSHIP: 5N
RANGE: 64W
6TH. P.M.
WELD COUNTY, CO

IMPROVEMENTS:

(MEASURED FROM THE PROPOSED WAYNE 22W-232 WELL LOCATION)

- ① BUILDING UNIT BU1 773' NW
- ② BUILDING B1 784', B2 806' NW
- ③ COUNTY ROAD 54 1/2 200' NE
- ④ COUNTY ROAD 57 617' SE
- ⑤ HIGHWAY 34 262' NW
- ⑥ ROAD/EDGE OF GRAVEL 651' W, 835' NW, 830' & 1380' SW, 1081' & 1039' SE
- ⑦ RAILROAD 605' N
- ⑧ FENCE 242' NE, 653' N, 797' W
- ⑨ EXISTING WELL HEAD 176' NW, 948' SW, 1198', 1487', 1507' & 1526' S
EXISTING PRODUCTION EQUIPMENT 1100', 1220', 1218', 1241', 1268' & 1301' SW (PDC)
1091', 1096', 1156', 1191', 1252', 1287' & 1354' SE (PDC)
- ⑩ GAS LINE LOCATES ±678' NW, ±830', ±929', ±949', ±1080', ±1149', ±1164', ±1175',
±1231' & ±1318' SW, ±1085' S, ±1107', ±1114', ±1126', ±1196', (3) ±1245', ±1307',
±1313', (3) ±1317', (2) ±1384', (4) ±1385', (2) ±1387', ±1393', ±1397', ±1401',
±1405' & ± 1416' SE
- ⑪ OVERHEAD UTILITY 732' NE, 837' & 846' NW
- ⑫ ELECTRIC LOCATES ±599' W, ±1088' & ±1117' SE, ±1243' & ±1276' SW
- ⑬ ELECTRIC APPURTENANCES 716', 850', 850' & 851' NW, 1089', 1114' & 1115' SE,
1255', 1271' & 1274' SW
- ⑭ WATERLINE LOCATES ±599' W
- ⑮ TELEPHONE LOCATES ±541' E, ±662' NW
- ⑯ TELEPHONE PEDESTAL 795' NW
- ⑰ PIPES AND CONCRETE STRUCTURES 617', 709', 735', 757', 808' & 816' NW
- ⑱ IRRIGATION PIVOT CENTER 987' SW
- ⑲ IRRIGATION PIVOT END GUN 157' NE
- ⑳ IRRIGATION PIVOT TRACK 91' NE, 89', 569', 449', 629' & 809' SW
- ㉑ DITCH 242' NE, 649' NW, 1436' SW, 632' N, 1556' & 1566'SE
- ㉒ POND 617' NW, 1407' SW