



Lat40°, Inc. 6250 W. 10th Street, Unit 2, Greeley, CO 970-515-5294

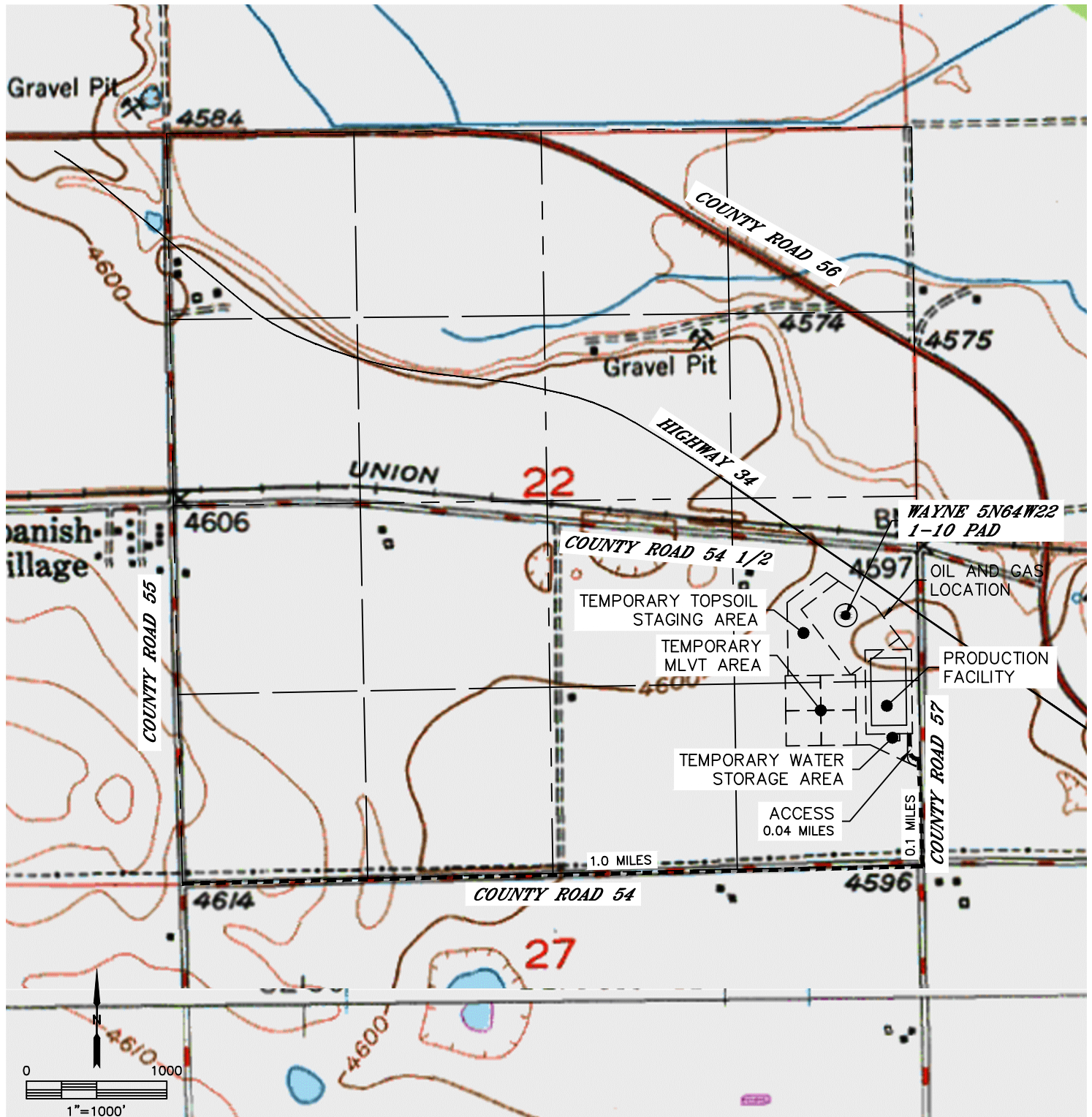
## ACCESS ROAD MAP

WAYNE 5N64W22 1-10 PAD

SECTION: 22  
TOWNSHIP: 5N  
RANGE: 64W  
6TH. P.M.  
WELD COUNTY, CO

### DRIVING DIRECTIONS TO WAYNE 5N64W22 1-10 PAD

FROM THE INTERSECTION OF COUNTY ROAD 55 AND COUNTY ROAD 54, HEAD EAST ON COUNTY ROAD 54 FOR 1.0 MILES TO COUNTY ROAD 57, HEAD NORTH ON COUNTY ROAD 57 FOR 0.1 MILES TO AN EXISTING ACCESS TO THE WEST, THENCE 0.04 MILES TO THE PROPOSED DRILL PAD AND PRODUCTION FACILITY.





Lat40°, Inc. 6250 W. 10th Street, Unit 2, Greeley, CO 970-515-5294

# ACCESS ROAD MAP

WAYNE 5N64W22 1-10 PAD

SECTION: 22  
TOWNSHIP: 5N  
RANGE: 64W  
6TH. P.M.  
WELD COUNTY, CO

