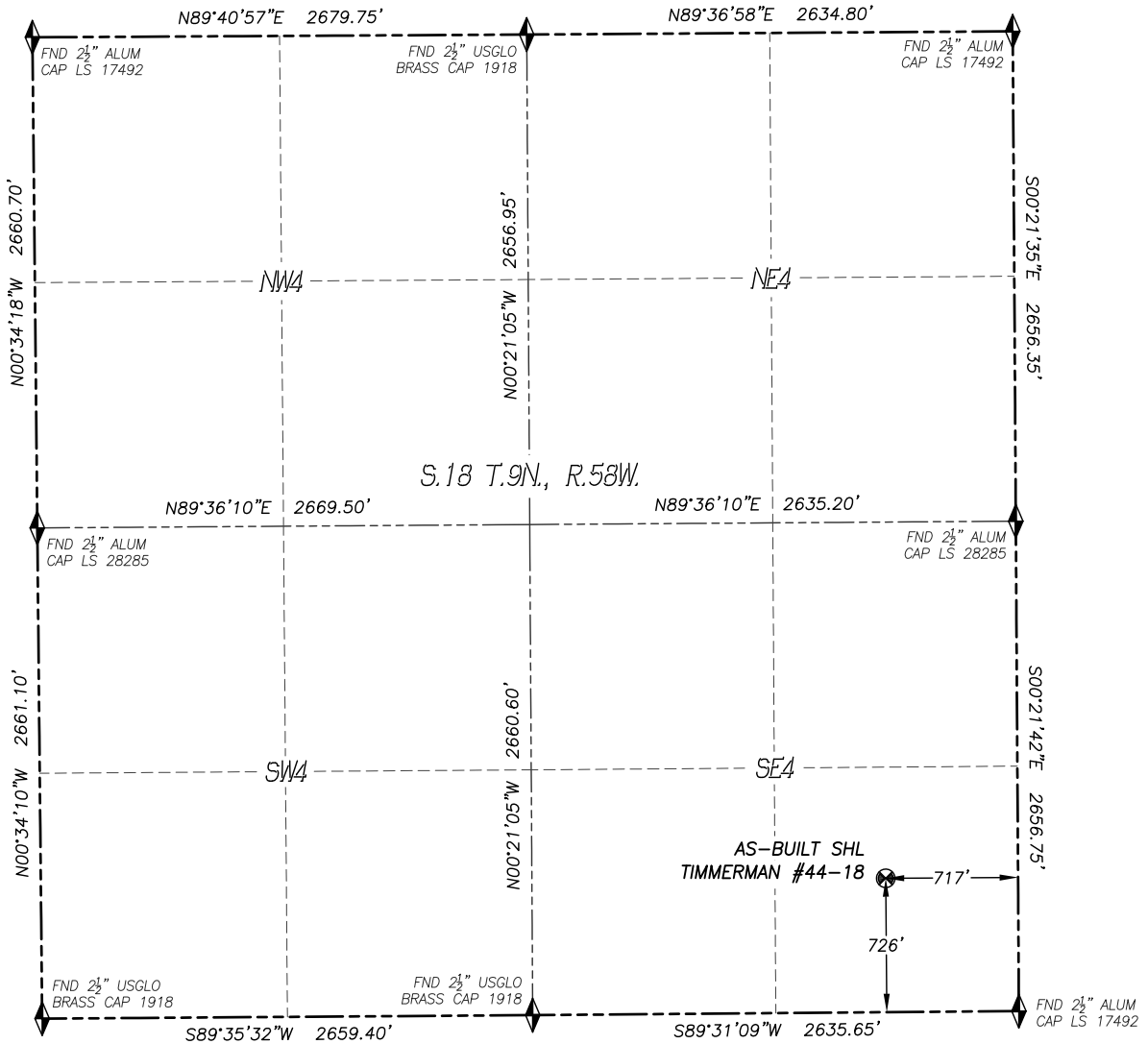


# WELL AS-BUILT SURVEY TIMMERMAN #44-18

SECTION 18, TOWNSHIP 9 NORTH, RANGE 58 WEST OF THE 6TH P.M.

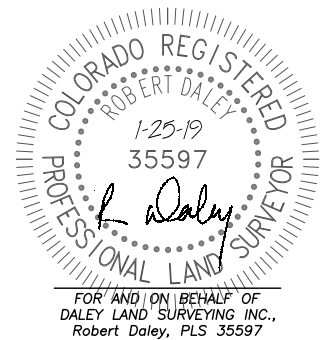


IN ACCORDANCE WITH A REQUEST FROM NOBLE ENERGY INC., DALEY LAND SURVEYING, INC. HAS DETERMINED THE SURFACE LOCATION OF THE **TIMMERMAN #44-18** WELL TO BE 726' FSL, 717' FEL, AS MEASURED AT NINETY (90) DEGREES FROM THE SECTION LINES OF SECTION 18, TOWNSHIP 9 NORTH, RANGE 58 WEST, OF THE 6TH PRINCIPAL MERIDIAN, WELD COUNTY, COLORADO.

I HEREBY STATE THAT THIS WELL AS-BUILT SURVEY WAS PREPARED BY ME OR UNDER MY DIRECT SUPERVISION, THAT THE WORK WAS COMPLETED ON 1/23/2019 FOR AND ON BEHALF OF NOBLE ENERGY INC., AND THAT THIS MAP DOES NOT REPRESENT A BOUNDARY SURVEY, IT IS NOT A LAND SURVEY PLAT OR AN IMPROVEMENT SURVEY PLAT AND IT IS NOT TO BE RELIED UPON FOR THE ESTABLISHMENT OF FENCE, BUILDING OR OTHER FUTURE IMPROVEMENT LINES.

#### NOTES:

- 1) BEARINGS FOR THIS MAP ARE ASSUMED AND BASED UPON GPS OBSERVATIONS MADE BETWEEN MONUMENTS LOCATED AT THE SOUTHEAST CORNER AND THE SOUTH QUARTER CORNER OF SECTION 18, TOWNSHIP 9 NORTH, RANGE 58 WEST.
- 2) HORIZONTAL DATUM IS NAD83.
- 3) VERTICAL DATUM IS NAVD88 AND ORIGINATES FROM THE LOCAL C.O.R.S. NETWORK, UTILIZING THE GEOID12A MODEL.
- 4) SURFACE USE: RANGELAND.
- 5) INST. OPERATOR: KYLE DALEY
- 6) LOCATION DETERMINED USING METAL LOCATOR.



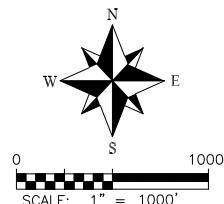
#### NAD 83 LATITUDE AND LONGITUDE

##### SURFACE LOCATION:

LATITUDE: N40.74581°  
LONGITUDE: W103.90028°  
ELEV: 4876'  
PDOP: 1.6  
QTR/QTR: SE4/SE4

#### LEGEND

- ◆ FOUND MONUMENT AS DESCRIBED
- ☼ PROPOSED WELL
- ⊙ EXISTING WELL
- BOTTOM HOLE
- ⊗ ABANDONED WELL
- ◆ CALCULATED POSITION



**noble energy**

**DALEY LAND SURVEYING, INC.**  
PARKER, COLORADO  
303.953.9841

# LOCATION PICTURES

TIMMERMAN #44-18

SECTION 18, TOWNSHIP 9 NORTH, RANGE 58 WEST OF THE 6TH P.M.

DATE: 10/18/18



LOOKING NORTH



LOOKING WEST



LOOKING EAST



LOOKING SOUTH