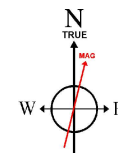


# WARD PETROLEUM CORPORATION

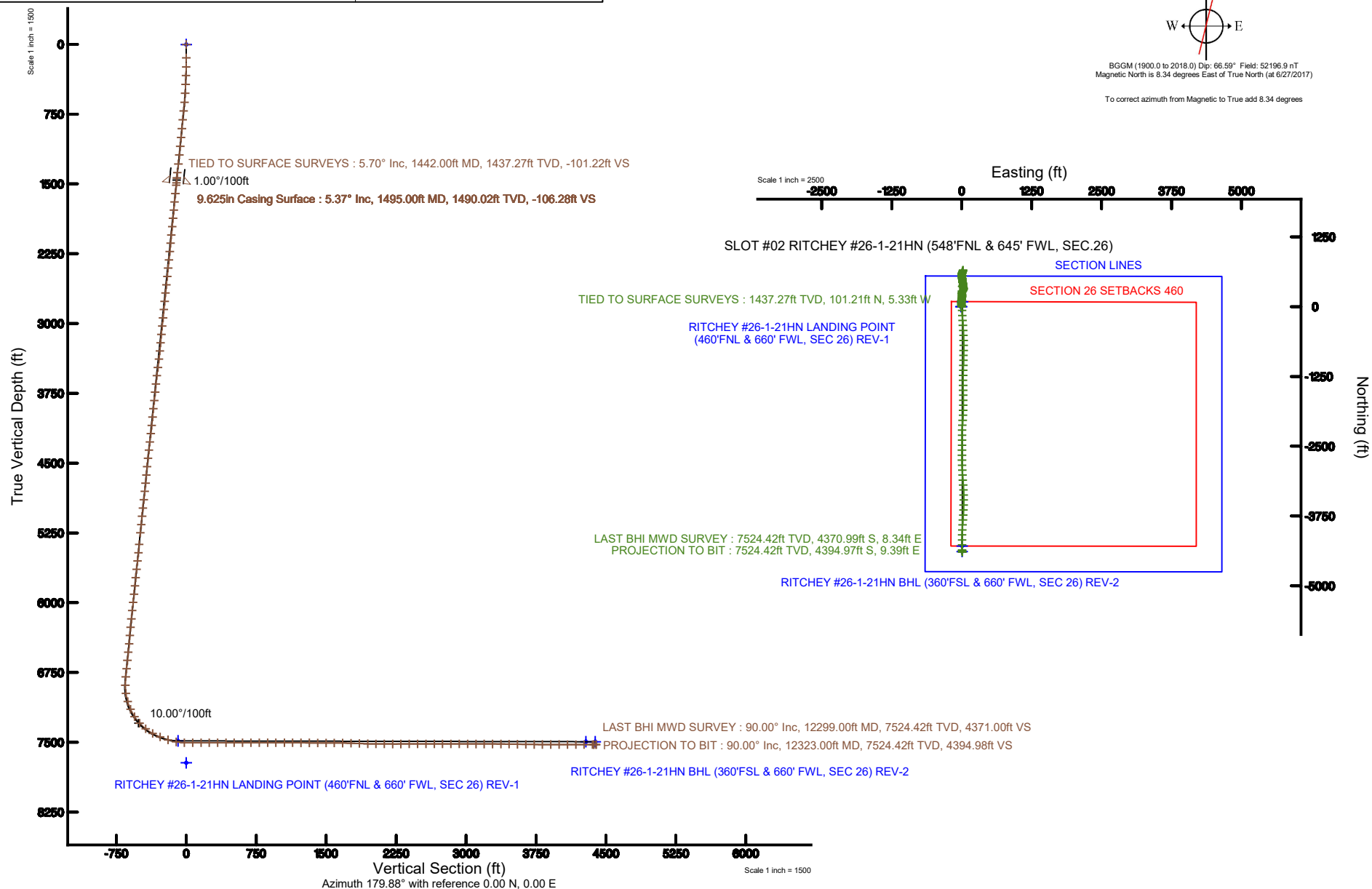
Location: COLORADO Slot: SLOT #02 RITCHEY #26-1-21HN (548'FNL & 645' FWL, SEC.26)  
Field: WELD COUNTY Well: RITCHEY #26-1-21HN  
Facility: SEC.26-T1N-R66W Wellbore: RITCHEY #26-1-21HN PWB

Plot reference wellpath is RITCHEY #26-1-21HN (REV-A.1) PWB	Grid System: NAD83 / Lambert Colorado SP, Northern Zone (501), US feet
True vertical depths are referenced to PRECISION 460 (20' KB) (RKB)	* = Wellpath was transformed from a different geodetic datum
Measured depths are referenced to PRECISION 460 (20' KB) (RKB)	North Reference: True north
PRECISION 460 (20' KB) (RKB) to Mean Sea Level: 5174 feet	Scale: True distance
Mean Sea Level to Ground level (At Slot: SLOT #02 RITCHEY #26-1-21HN (548'FNL & 645' FWL, SEC.26) ): 0 feet	Depths are in feet
Coordinates are in feet referenced to Slot	Created by: doddanna on 2018-02-26
	Database: WellArchitectDB



BGGM (1900.0 to 2018.0) Dip: 66.59° Field: 52196.9 nT  
Magnetic North is 8.34 degrees East of True North (at 6/27/2017)

To correct azimuth from Magnetic to True add 8.34 degrees



**Company:** Baker Hughes Incorporated  
**Customer/Operator:** Ward Petroleum  
**Date Range:** 7/7/2017 - 7/9/2017  
**Rig Name:** PD 460  
**Rig Elv/Dat:** 20.00 (ft) / GL  
**Well:** Ritchey 26-1-21HN  
**Wellbore:** Ritchey 26-1-21HN



Tie/ Proj	Measured Depth (ft)	Inclination (deg)	Azimuth (deg)	Temperature(degF)	True Vertical Depth(ft)	Northing(ft)	Easting(ft)	DLS(deg/100ft)	Vertical Section(ft)
Tie	2.00	0.00	154.60		2.00	0.00	0.00	0.00	0.00
	146.00	0.20	154.60		146.00	-0.23	0.11	0.14	0.23
	242.00	1.10	357.80		241.99	0.54	0.14	1.34	-0.54
	337.00	2.30	5.70		336.95	3.35	0.30	1.28	-3.35
	432.00	2.80	332.50		431.86	7.31	-0.58	1.61	-7.31
	527.00	3.30	344.80		526.73	12.00	-2.37	0.86	-12.01
	623.00	4.70	353.60		622.49	18.58	-3.53	1.59	-18.59
	718.00	6.20	350.90		717.06	27.51	-4.78	1.60	-27.52
	813.00	6.20	359.00		811.51	37.71	-5.68	0.92	-37.72
	908.00	5.00	357.50		906.05	46.97	-5.95	1.27	-46.98
	1003.00	5.30	0.60		1000.67	55.50	-6.09	0.43	-55.51
	1098.00	5.90	1.70		1095.21	64.76	-5.89	0.64	-64.78
	1193.00	5.70	359.60		1189.73	74.36	-5.78	0.31	-74.37
	1289.00	6.60	358.30		1285.17	84.64	-5.98	0.95	-84.66
	1384.00	6.20	3.60		1379.58	95.22	-5.82	0.75	-95.23
	1442.00	5.70	5.90		1437.27	101.21	-5.33	0.95	-101.22
	1520.00	5.23	12.37	106.77	1514.92	108.54	-4.17	0.99	-108.55
	1610.00	5.59	13.11	109.47	1604.52	116.81	-2.29	0.41	-116.82
	1699.00	5.65	9.40	109.47	1693.09	125.36	-0.60	0.41	-125.36
	1789.00	5.44	2.96	109.47	1782.67	133.99	0.35	0.73	-133.99
	1877.00	5.42	4.06	109.47	1870.27	142.30	0.86	0.12	-142.30
	1967.00	6.12	10.47	112.17	1959.82	151.26	2.03	1.06	-151.25
	2057.00	5.24	8.73	114.87	2049.37	160.04	3.53	1.00	-160.03
	2146.00	5.49	8.28	114.87	2137.98	168.27	4.76	0.28	-168.26
	2236.00	5.49	7.33	114.87	2227.57	176.80	5.93	0.10	-176.78
	2325.00	5.74	2.79	339.23	2316.15	185.47	6.69	0.57	-185.45
	2414.00	5.97	5.17	117.58	2404.68	194.52	7.32	0.38	-194.50
	2504.00	6.05	357.74	120.28	2494.19	203.92	7.55	0.87	-203.91
	2594.00	6.01	349.45	120.28	2583.69	213.29	6.50	0.97	-213.28
	2683.00	5.85	348.54	120.28	2672.22	222.32	4.75	0.21	-222.31
	2773.00	6.02	355.96	122.98	2761.73	231.52	3.51	0.87	-231.51
	2862.00	5.73	2.20	122.98	2850.27	240.62	3.35	0.79	-240.61
	2951.00	5.64	12.69	125.69	2938.83	249.32	4.48	1.17	-249.31
	3041.00	6.39	22.97	125.69	3028.34	258.25	7.41	1.46	-258.23
	3130.00	6.23	28.38	128.39	3116.80	267.06	11.63	0.69	-267.03
	3220.00	6.06	34.35	104.06	3206.28	275.28	16.64	0.73	-275.24
	3309.00	7.19	35.62	128.39	3294.69	283.68	22.53	1.28	-283.63
	3398.00	7.39	27.18	128.39	3382.97	293.30	28.39	1.22	-293.24
	3488.00	7.45	16.32	131.09	3472.22	304.05	32.67	1.56	-303.98
	3577.00	7.42	2.35	133.80	3560.48	315.33	34.53	2.03	-315.26
	3667.00	5.56	348.54	133.80	3649.91	325.41	33.90	2.68	-325.34
	3756.00	5.75	354.95	136.50	3738.47	334.08	32.65	0.74	-334.01
	3846.00	6.64	341.07	136.50	3827.95	343.49	30.57	1.93	-343.43
	3935.00	6.20	334.30	139.20	3916.40	352.69	26.81	0.98	-352.63
	4024.00	6.14	344.29	139.20	4004.88	361.60	23.44	1.21	-361.55
	4114.00	6.21	357.62	141.91	4094.36	371.10	21.94	1.59	-371.05
	4203.00	6.29	4.45	141.91	4182.84	380.77	22.11	0.84	-380.72
	4293.00	6.42	6.26	141.91	4272.28	390.69	23.04	0.27	-390.64
	4382.00	6.32	3.17	144.61	4360.73	400.53	23.86	0.40	-400.48
	4471.00	6.54	358.54	147.31	4449.18	410.48	24.00	0.63	-410.43
	4561.00	6.22	342.41	144.61	4538.63	420.26	22.40	2.02	-420.21
	4650.00	5.74	327.21	144.61	4627.15	428.59	18.53	1.85	-428.55
	4739.00	5.63	338.94	144.61	4715.71	436.41	14.55	1.31	-436.38
	4828.00	5.95	1.80	147.31	4804.27	445.10	13.12	2.60	-445.07
	4918.00	6.30	4.68	147.31	4893.76	454.68	13.67	0.52	-454.65
	5007.00	6.32	354.40	150.02	4982.22	464.42	13.59	1.27	-464.39
	5097.00	6.21	350.15	223.00	5071.68	474.15	12.28	0.53	-474.12
	5186.00	6.12	349.65	152.72	5160.17	483.56	10.60	0.12	-483.53
	5275.00	6.05	349.03	155.42	5248.67	492.83	8.86	0.11	-492.81
	5401.00	5.11	350.00	152.72	5374.07	504.87	6.62	0.75	-504.86
	5490.00	6.19	351.07	152.72	5462.63	513.52	5.19	1.22	-513.51
	5580.00	6.12	357.09	155.42	5552.12	523.10	4.19	0.72	-523.09
	5669.00	5.91	358.04	158.12	5640.63	532.42	3.79	0.26	-532.41
	5759.00	6.14	348.77	158.12	5730.13	541.77	2.70	1.11	-541.77
	5848.00	6.02	346.62	160.83	5818.63	550.98	0.69	0.29	-550.98
	5938.00	6.20	350.38	160.83	5908.12	560.36	-1.21	0.49	-560.37
	6027.00	6.03	358.24	160.83	5996.61	569.77	-2.16	0.96	-569.78
	6116.00	6.27	9.50	163.53	6085.11	579.24	-1.50	1.38	-579.24
	6206.00	6.07	14.31	166.23	6174.58	588.70	0.48	0.62	-588.70
	6295.00	6.33	25.23	166.23	6263.07	597.70	3.74	1.35	-597.69
	6385.00	5.45	31.84	168.94	6352.59	605.82	8.11	1.23	-605.80
	6474.00	5.86	30.11	166.23	6441.16	613.34	12.62	0.50	-613.31
	6564.00	5.95	14.83	171.64	6530.69	621.82	16.12	1.74	-621.79
	6653.00	6.12	8.44	174.34	6619.19	630.97	17.99	0.78	-630.94
	6743.00	6.02	17.61	174.34	6708.69	640.22	20.13	1.08	-640.17
	6832.00	6.24	22.18	174.34	6797.18	649.15	23.36	0.60	-649.10
	6921.00	0.39	0.44	174.34	6886.00	653.93	25.19	6.61	-653.88
	7010.00	8.99	191.87	174.34	6974.65	647.41	23.76	10.53	-647.36
	7100.00	16.56	196.48	171.64	7062.36	628.21	18.67	8.48	-628.17
	7189.00	24.11	185.90	177.05	7145.78	597.91	13.19	9.40	-597.88
	7279.00	33.75	175.64	179.75	7224.50	554.57	13.20	12.01	-554.54
	7368.00	42.26	178.97	182.45	7294.57	499.89	15.63	9.83	-499.85
	7457.00	51.39	183.73	185.16	7355.42	435.11	13.90	10.97	-435.08
	7547.00	61.43	184.74	187.86	7405.15	360.44	8.33	11.19	-360.43
	7636.00	68.41	181.72	187.86	7442.86	280.02	3.85	8.42	-280.01
	7726.00	71.39	179.06	187.86	7473.79	195.52	3.30	4.32	-195.52
	7815.00	79.88	179.11	193.27	7495.85	109.40	4.67	9.54	-109.39
	7904.00	89.66	180.44	195.97	7503.96	20.88	5.01	11.09	-20.87
	7993.00	90.00	178.36	195.97	7504.22	-68.11	5.94	2.37	68.12

Proj	8083.00	90.00	176.15	377.08	7504.22	-158.00	10.25	2.46	158.02
	8172.00	90.12	176.02	290.58	7504.13	-246.80	16.33	0.20	246.83
	8262.00	90.00	176.87	201.37	7504.03	-336.62	21.91	0.95	336.67
	8351.00	89.97	177.08	204.08	7504.06	-425.50	26.61	0.24	425.55
	8440.00	90.06	177.65	206.78	7504.03	-514.40	30.70	0.65	514.47
	8530.00	89.85	178.49	206.78	7504.10	-604.35	33.73	0.96	604.42
	8619.00	90.22	179.87	204.08	7504.05	-693.34	35.00	1.61	693.41
	8709.00	89.94	180.85	201.37	7503.92	-783.34	34.44	1.13	783.41
	8798.00	89.72	180.52	206.78	7504.19	-872.33	33.37	0.45	872.40
	8887.00	89.66	180.95	209.48	7504.67	-961.32	32.23	0.49	961.39
	8977.00	89.75	182.12	209.48	7505.13	-1051.29	29.82	1.30	1051.35
	9066.00	89.85	181.56	212.19	7505.44	-1140.24	26.96	0.64	1140.29
	9156.00	89.82	180.32	212.19	7505.70	-1230.22	25.49	1.38	1230.28
	9245.00	89.57	179.98	214.89	7506.18	-1319.22	25.25	0.47	1319.27
	9335.00	89.75	179.91	214.89	7506.71	-1409.22	25.34	0.21	1409.27
	9424.00	89.63	179.55	217.59	7507.19	-1498.22	25.76	0.43	1498.27
	9513.00	89.69	179.13	217.59	7507.72	-1587.21	26.78	0.48	1587.26
	9603.00	89.54	180.34	217.59	7508.33	-1677.21	27.20	1.35	1677.26
	9692.00	88.15	180.23	217.59	7510.12	-1766.19	26.76	1.57	1766.24
	9782.00	88.06	180.83	220.30	7513.10	-1856.13	25.93	0.67	1856.18
	9871.00	88.03	182.95	220.30	7516.13	-1945.03	22.99	2.38	1945.07
	9960.00	89.82	183.86	220.30	7517.80	-2033.85	17.71	2.26	2033.88
	10050.00	89.69	183.43	217.59	7518.19	-2123.67	11.99	0.50	2123.69
	10139.00	89.85	181.15	220.30	7518.54	-2212.59	8.43	2.57	2212.60
	10228.00	90.43	179.30	223.00	7518.33	-2301.58	8.08	2.18	2301.59
	10318.00	90.43	180.40	220.30	7517.65	-2391.58	8.32	1.22	2391.59
	10407.00	90.28	181.14	225.70	7517.10	-2480.57	7.12	0.85	2480.58
	10497.00	89.85	180.71	223.00	7517.00	-2570.56	5.67	0.68	2570.56
	10586.00	89.88	180.07	228.41	7517.21	-2659.55	5.06	0.72	2659.56
	10675.00	90.00	179.28	228.41	7517.30	-2748.55	5.57	0.90	2748.56
	10765.00	89.94	178.37	228.41	7517.35	-2838.53	7.41	1.01	2838.54
	10854.00	89.78	177.55	228.41	7517.57	-2927.47	10.58	0.94	2927.49
	10943.00	89.75	176.59	233.81	7517.93	-3016.36	15.13	1.08	3016.38
	11033.00	89.85	176.28	244.62	7518.24	-3106.18	20.73	0.36	3106.22
	11122.00	90.00	176.76	228.41	7518.36	-3195.02	26.13	0.57	3195.06
	11211.00	89.85	176.89	228.41	7518.48	-3283.88	31.06	0.22	3283.94
	11301.00	90.06	178.90	228.41	7518.55	-3373.81	34.36	2.25	3373.88
	11390.00	89.02	180.14	231.11	7519.26	-3462.81	35.11	1.82	3462.87
	11479.00	88.95	181.64	231.11	7520.84	-3551.78	33.73	1.69	3551.84
	11569.00	88.92	182.07	233.81	7522.51	-3641.72	30.81	0.48	3641.77
	11658.00	89.75	183.29	233.81	7523.55	-3730.61	26.65	1.66	3730.66
	11747.00	89.94	183.50	236.52	7523.79	-3819.45	21.38	0.32	3819.49
	11837.00	89.97	184.40	236.52	7523.86	-3909.24	15.18	1.00	3909.26
	11926.00	90.03	182.24	236.52	7523.86	-3998.08	10.03	2.43	3998.10
	12015.00	89.88	181.32	236.52	7523.93	-4087.04	7.26	1.05	4087.05
	12105.00	89.85	180.13	236.52	7524.14	-4177.03	6.13	1.32	4177.03
	12194.00	89.91	180.08	239.22	7524.33	-4266.03	5.96	0.09	4266.03
	12284.00	89.97	177.70	239.22	7524.42	-4356.01	7.71	2.65	4356.01
	12299.00	90.00	177.48	239.22	7524.42	-4370.99	8.34	1.48	4371.00
	12323.00	90.00	177.48		7524.42	-4394.97	9.39	0.00	4394.98