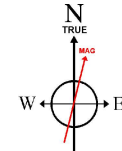


WARD PETROLEUM CORPORATION

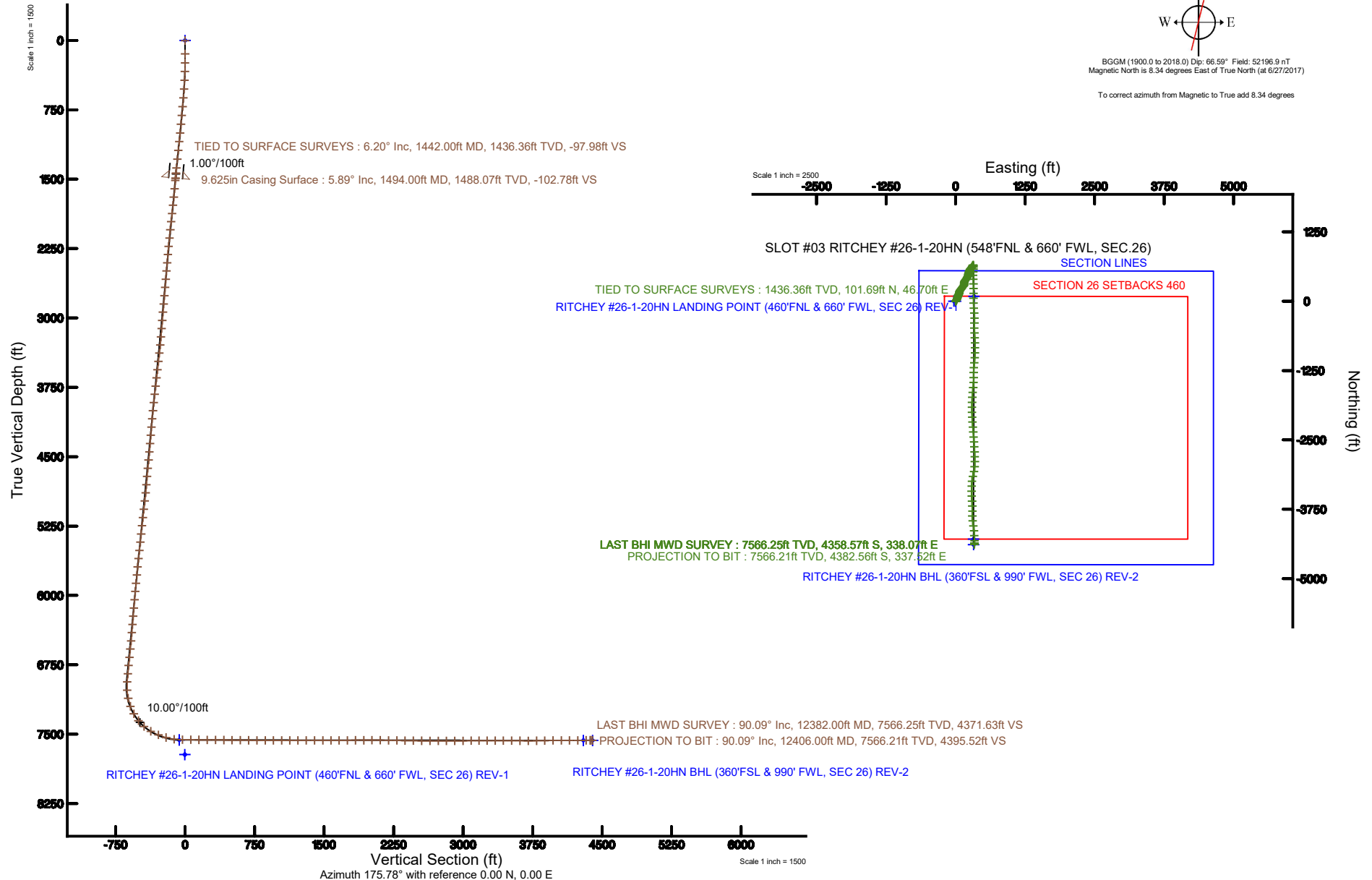
Location: COLORADO Slot: SLOT #03 RITCHEY #26-1-20HN (548'FNL & 660' FWL, SEC.26)
Field: WELD COUNTY Well: RITCHEY #26-1-20HN
Facility: SEC.26-T1N-R66W Wellbore: RITCHEY #26-1-20HN PWB

Plot reference wellpath is RITCHEY #26-1-20HN (REV-A.1) PWB	Grid System: NAD83 / Lambert Colorado SP, Northern Zone (501), US feet
True vertical depths are referenced to PRECISION 460 (20'KB) (RKB)	* = Wellpath was transformed from a different geodetic datum
Measured depths are referenced to PRECISION 460 (20'KB) (RKB)	North Reference: True north
PRECISION 460 (20'KB) (RKB) to Mean Sea Level: 5174 feet	Scale: True distance
Mean Sea Level to Ground level (At Slot: SLOT #03 RITCHEY #26-1-20HN (548'FNL & 660' FWL, SEC.26)): 0 feet	Depths are in feet
Coordinates are in feet referenced to Slot	Created by: doddanna on 2018-02-26
	Database: WellArchitectDB



BGGM (1900.0 to 2018.0) Dip: 66.59° Field: 52196.9 nT
Magnetic North is 8.34 degrees East of True North (at 6/27/2017)

To correct azimuth from Magnetic to True add 8.34 degrees





Company: Baker Hughes Incorporated
 Customer/Operator: Ward Petroleum
 Date Range: 7/3/2017 - 7/5/2017
 Rig Name: PD 460
 Rig Elev/Dat: 20.00 (ft) / GL
 Well: Ritchey 26-1-20HN
 Wellbore: Ritchey 26-1-20HN

Tie/ Proj	Measured Depth (ft)	Inclination (deg)	Azimuth (deg)	Temperature (degF)	True Vertical Depth (ft)	Northing (ft)	Easting (ft)	DLS (deg/100ft)	Vertical Section (ft)
	2.00	0.00	103.40		2.00	0.00	0.00	0.00	0.00
	146.00	0.60	103.40		146.00	-0.17	0.73	0.42	0.23
	242.00	1.20	52.30		241.99	0.32	2.02	0.99	-0.17
	337.00	2.20	33.30		336.94	2.46	3.81	1.19	-2.17
	432.00	3.70	33.80		431.82	6.53	6.51	1.58	-6.03
	527.00	4.70	31.20		526.56	12.40	10.23	1.07	-11.62
	623.00	5.90	35.20		622.15	19.80	15.12	1.31	-18.63
	718.00	6.70	27.20		716.57	28.72	20.46	1.25	-27.14
	813.00	6.00	28.10		810.99	38.03	25.34	0.74	-36.06
	908.00	5.50	19.10		905.51	46.71	29.16	1.08	-44.44
	1003.00	5.90	13.60		1000.05	55.76	31.80	0.71	-53.27
	1098.00	6.30	13.10		1094.51	65.58	34.13	0.42	-62.89
	1193.00	6.60	16.40		1188.91	75.90	36.85	0.50	-72.98
	1289.00	6.40	17.80		1284.29	86.28	40.05	0.27	-83.10
	1384.00	6.30	26.30		1378.71	96.00	43.98	0.99	-92.50
Tie	1442.00	6.20	24.90		1436.36	101.69	46.70	0.31	-97.98
	1498.00	5.87	24.03	104.06	1492.05	107.05	49.14	0.61	-103.14
	1521.00	5.80	24.40	106.77	1514.93	109.18	50.10	0.35	-105.20
	1611.00	6.44	28.57	106.77	1604.42	117.76	54.40	0.87	-113.43
	1700.00	6.32	24.39	109.47	1692.87	126.60	58.80	0.54	-121.93
	1789.00	6.53	22.55	112.17	1781.31	135.74	62.77	0.33	-130.75
	1879.00	6.37	5.76	112.17	1870.75	145.43	65.23	2.10	-140.24
	1968.00	6.31	5.53	112.17	1959.21	155.21	66.20	0.07	-149.92
	2057.00	6.41	11.89	114.87	2047.66	164.94	67.69	0.80	-159.51
	2147.00	6.33	17.97	114.87	2137.10	174.58	70.26	0.75	-168.93
	2237.00	6.36	24.83	117.58	2226.55	183.82	73.88	0.84	-177.88
	2326.00	6.33	32.20	117.58	2315.01	192.45	78.57	0.92	-186.14
	2415.00	6.44	38.17	117.58	2403.46	200.52	84.27	0.76	-193.78
	2505.00	6.46	37.06	120.28	2492.89	208.53	90.44	0.14	-201.31
	2594.00	6.23	37.05	255.44	2581.34	216.38	96.36	0.26	-208.70
	2684.00	6.54	37.33	122.98	2670.79	224.35	102.42	0.35	-216.21
	2774.00	6.30	38.35	122.98	2760.22	232.30	108.59	0.30	-223.68
	2863.00	6.66	34.47	122.98	2848.65	240.38	114.54	0.64	-231.30
	2952.00	6.44	32.37	125.69	2937.07	248.85	120.13	0.37	-239.34
	3042.00	6.59	44.53	125.69	3026.50	256.80	126.46	1.54	-246.80
	3131.00	6.71	44.96	125.69	3114.90	264.12	133.71	0.15	-253.56
	3221.00	6.75	42.00	128.39	3204.28	271.77	140.97	0.39	-260.66
	3310.00	6.58	32.26	131.09	3292.68	279.97	147.19	1.28	-268.38
	3399.00	6.83	13.15	131.09	3381.08	289.44	151.11	2.51	-277.53
	3489.00	6.58	4.09	133.80	3470.47	299.79	152.70	1.21	-287.74
	3578.00	6.59	4.43	133.80	3558.88	309.97	153.46	0.05	-297.84
	3668.00	6.63	1.10	133.80	3648.28	320.31	153.96	0.43	-308.12
	3757.00	5.97	359.11	136.50	3736.74	330.08	153.98	0.78	-317.85
	3846.00	6.70	8.94	136.50	3825.20	339.84	154.72	1.47	-327.53
	3936.00	7.21	22.99	136.50	3914.55	350.22	157.74	1.97	-337.66
	4025.00	7.11	33.88	136.50	4002.86	359.94	162.99	1.53	-346.97
	4114.00	7.04	32.68	136.50	4091.18	369.10	169.01	0.18	-355.66
	4204.00	6.18	35.58	139.20	4180.58	377.68	174.80	1.02	-363.80
	4293.00	6.49	44.12	109.47	4269.04	385.19	181.09	1.11	-370.82
	4383.00	6.38	38.43	141.91	4358.47	392.76	187.74	0.72	-377.88
	4472.00	6.51	34.41	144.61	4446.91	400.79	193.67	0.53	-385.46
	4562.00	6.40	25.54	144.61	4536.34	409.53	198.71	1.11	-393.80
	4651.00	6.39	24.47	144.61	4624.79	418.51	202.90	0.13	-402.45
	4740.00	6.20	29.60	147.31	4713.25	427.20	207.33	0.67	-410.78
	4830.00	6.64	40.55	147.31	4802.69	435.38	213.11	1.44	-418.52
	4919.00	6.48	33.84	152.72	4891.11	443.46	219.25	0.88	-426.12
	5008.00	6.98	20.55	150.02	4979.50	452.70	223.95	1.83	-434.99
	5097.00	6.52	3.23	152.72	5067.89	462.81	226.13	2.34	-444.91
	5187.00	6.47	2.44	155.42	5157.32	472.97	226.64	0.11	-455.01
	5276.00	6.25	8.13	155.42	5245.77	482.78	227.53	0.75	-464.73
	5366.00	6.36	15.78	158.12	5335.23	492.43	229.58	0.94	-474.20
	5455.00	6.28	15.36	160.83	5423.69	501.86	232.21	0.10	-483.42
	5545.00	6.49	12.95	160.83	5513.13	511.57	234.66	0.38	-492.91

	5634.00	6.43	12.32	163.53	5601.56	521.34	236.85	0.10	-502.50
	5724.00	6.42	19.00	163.53	5691.00	531.02	239.56	0.83	-511.95
	5813.00	6.39	21.77	166.23	5779.44	540.32	243.02	0.35	-520.98
	5903.00	6.25	28.00	168.94	5868.90	549.30	247.17	0.78	-529.62
	5992.00	6.16	28.49	168.94	5957.38	557.77	251.73	0.12	-537.74
	6082.00	6.22	30.74	168.94	6046.85	566.21	256.52	0.28	-545.80
	6171.00	6.34	35.96	171.64	6135.32	574.33	261.87	0.66	-553.50
	6260.00	6.36	36.17	171.64	6223.77	582.29	267.67	0.03	-561.01
	6350.00	6.38	41.21	174.34	6313.22	590.07	273.90	0.62	-568.32
	6439.00	7.00	41.58	174.34	6401.61	597.85	280.76	0.70	-575.57
	6529.00	6.96	40.14	177.05	6490.94	606.12	287.92	0.20	-583.29
	6618.00	6.95	31.64	177.05	6579.29	614.83	294.22	1.16	-591.51
	6708.00	6.88	27.76	179.75	6668.64	624.23	299.58	0.52	-600.50
	6797.00	6.33	26.75	179.75	6757.05	633.33	304.28	0.63	-609.23
	6887.00	6.13	24.47	179.75	6846.52	642.14	308.50	0.35	-617.70
	6976.00	5.83	29.77	182.45	6935.03	650.39	312.71	0.71	-625.61
	7065.00	7.18	125.26	182.45	7023.66	651.10	319.51	10.86	-625.82
	7154.00	10.84	185.30	182.45	7111.72	639.53	323.29	10.71	-614.01
	7244.00	19.75	180.38	185.16	7198.45	615.85	322.41	10.00	-590.45
	7333.00	29.62	183.26	187.86	7279.22	578.76	321.05	11.17	-553.57
	7423.00	38.45	184.61	190.56	7353.73	528.56	317.53	9.85	-503.76
	7512.00	49.77	179.79	193.27	7417.55	466.79	315.42	13.26	-442.31
	7601.00	59.75	176.93	195.97	7468.84	394.24	317.61	11.51	-369.80
	7691.00	68.70	178.22	198.67	7507.94	313.35	321.01	10.03	-288.88
	7780.00	74.26	179.67	198.67	7536.20	229.01	322.54	6.44	-204.65
	7869.00	82.16	180.32	201.37	7554.37	141.95	322.54	8.91	-117.83
	7959.00	90.03	180.60	204.08	7560.49	52.23	321.82	8.75	-28.41
	8048.00	89.88	177.34	206.78	7560.56	-36.74	323.42	3.67	60.44
	8137.00	89.41	175.68	206.78	7561.12	-125.57	328.84	1.94	149.43
	8227.00	89.45	175.74	87.84	7562.01	-215.31	335.57	0.08	239.42
	8316.00	89.57	179.79	206.78	7562.77	-304.22	339.04	4.55	328.35
	8406.00	89.41	181.83	209.48	7563.57	-394.21	337.77	2.27	417.99
	8495.00	89.48	178.94	212.19	7564.44	-483.19	337.17	3.25	506.69
	8584.00	89.54	177.70	212.19	7565.20	-572.15	339.78	1.39	595.60
	8674.00	89.54	177.07	214.89	7565.92	-662.05	343.88	0.70	685.56
	8763.00	89.60	178.15	214.89	7566.59	-750.97	347.60	1.22	774.51
	8853.00	89.60	179.36	223.00	7567.22	-840.94	349.55	1.34	864.39
	8942.00	90.28	182.03	252.73	7567.31	-929.93	348.47	3.10	953.05
	9031.00	90.12	183.43	214.89	7567.00	-1018.82	344.23	1.58	1041.39
	9121.00	90.12	185.63	217.59	7566.81	-1108.54	337.12	2.44	1130.34
	9210.00	89.91	184.82	212.19	7566.79	-1197.17	329.02	0.94	1218.13
	9300.00	89.82	180.42	217.59	7567.00	-1287.05	324.91	4.89	1307.47
	9389.00	90.03	179.00	220.30	7567.12	-1376.05	325.36	1.61	1396.26
	9479.00	90.22	182.55	220.30	7566.92	-1466.02	324.14	3.95	1485.90
	9568.00	90.00	186.86	223.00	7566.75	-1554.70	316.84	4.85	1573.80
	9657.00	90.00	184.92	225.70	7566.75	-1643.23	307.71	2.18	1661.42
	9747.00	90.34	183.64	225.70	7566.48	-1732.98	300.99	1.47	1750.43
	9837.00	90.22	182.50	225.70	7566.04	-1822.84	296.17	1.27	1839.70
	9926.00	90.15	180.45	228.41	7565.75	-1911.81	293.88	2.30	1928.25
	10015.00	90.46	177.97	228.41	7565.28	-2000.79	295.11	2.81	2017.08
	10104.00	89.17	177.53	228.41	7565.57	-2089.72	298.60	1.53	2106.03
	10193.00	89.23	176.21	231.11	7566.81	-2178.58	303.46	1.48	2195.00
	10283.00	89.26	175.45	250.03	7568.00	-2268.33	310.01	0.85	2284.99
	10372.00	89.14	175.14	233.81	7569.24	-2357.02	317.31	0.37	2373.98
	10462.00	89.26	175.92	233.81	7570.50	-2446.74	324.32	0.88	2463.97
	10551.00	89.78	175.79	233.81	7571.24	-2535.50	330.75	0.60	2552.97
	10640.00	89.97	176.48	236.52	7571.44	-2624.30	336.75	0.80	2641.96
	10730.00	89.72	177.40	236.52	7571.68	-2714.17	341.55	1.06	2731.94
	10819.00	89.78	178.61	236.52	7572.07	-2803.11	344.65	1.36	2820.88
	10908.00	90.00	179.99	236.52	7572.24	-2892.10	345.74	1.57	2909.70
	10998.00	90.92	183.93	239.22	7571.52	-2982.03	342.66	4.50	2999.16
	11087.00	90.40	191.60	233.81	7570.49	-3070.14	330.65	8.64	3086.15
	11176.00	90.12	193.90	231.11	7570.08	-3156.94	311.01	2.60	3171.27
	11266.00	89.97	185.66	228.41	7570.01	-3245.56	295.73	9.16	3258.52
	11355.00	90.15	182.33	233.81	7569.92	-3334.33	289.53	3.75	3346.59
	11444.00	89.82	179.51	298.69	7569.94	-3423.31	288.10	3.19	3435.23
	11534.00	89.60	176.97	239.22	7570.40	-3513.26	290.87	2.83	3525.13
	11623.00	89.69	176.11	239.22	7570.95	-3602.09	296.24	0.97	3614.12
	11712.00	89.60	178.91	236.52	7571.50	-3691.00	300.11	3.15	3703.07
	11802.00	91.11	179.61	241.92	7570.94	-3780.98	301.27	1.85	3792.90
	11891.00	91.02	181.59	258.14	7569.29	-3869.96	300.34	2.23	3881.57
	11980.00	90.83	170.91	241.92	7567.85	-3958.63	306.15	12.00	3970.42
	12070.00	89.88	170.61	239.22	7567.29	-4047.46	320.60	1.11	4060.08
	12159.00	90.31	175.40	239.22	7567.14	-4135.77	331.43	5.40	4148.95



	12249.00	90.12	177.65	239.22	7566.81	-4225.60	336.89	2.51	4238.93
	12338.00	90.37	180.12	244.62	7566.43	-4314.57	338.62	2.79	4327.79
	12382.00	90.09	181.31	225.70	7566.25	-4358.57	338.07	2.78	4371.63
Proj	12406.00	90.09	181.31		7566.21	-4382.56	337.52	0.00	4395.52