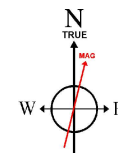


# WARD PETROLEUM CORPORATION

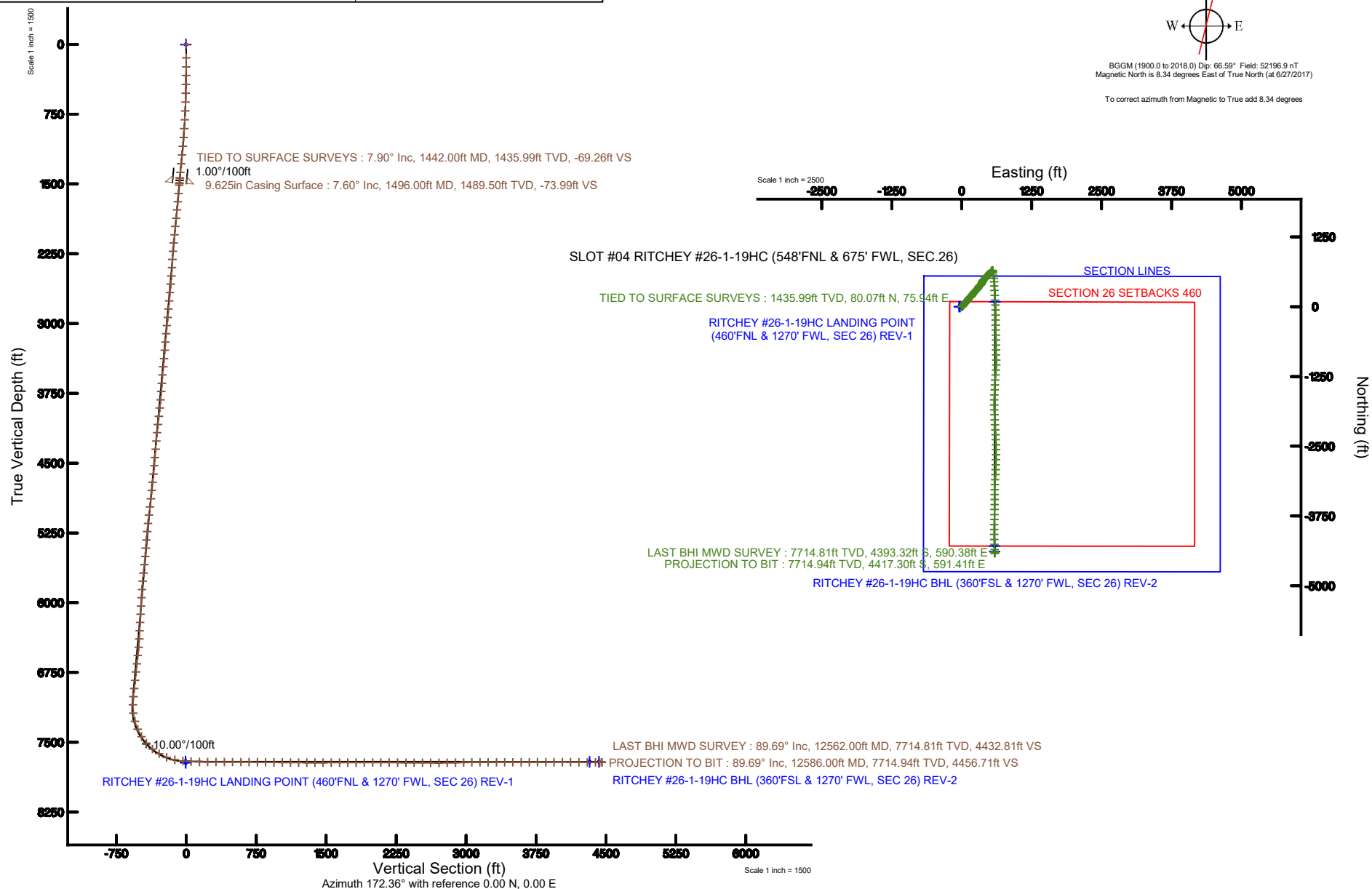
Location: COLORADO Slot: SLOT #04 RITCHEY #26-1-19HC (548'FNL & 675' FWL, SEC.26)  
Field: WELD COUNTY Well: RITCHEY #26-1-19HC  
Facility: SEC.26-T1N-R66W Wellbore: RITCHEY #26-1-19HC PWB

Plot reference wellpath is RITCHEY #26-1-19HC (REV-A.1) PWP	Grid System: NAD83 / Lambert Colorado SP, Northern Zone (501), US feet
True vertical depths are referenced to PRECISION 460 (RKB)	* = Wellpath was transformed from a different geodetic datum
Measured depths are referenced to PRECISION 460 (RKB)	North Reference: True north
PRECISION 460 (RKB) to Mean Sea Level: 5174 feet	Scale: True distance
Mean Sea Level to Ground level (At Slot: SLOT #04 RITCHEY #26-1-19HC (548'FNL & 675' FWL, SEC.26) ): 0 feet	Depths are in feet
Coordinates are in feet referenced to Slot	Created by: doddanna on 2018-02-26
	Database: WellArchitectDB



BGGM (1900.0 to 2018.0) Dip: 66.59° Field: 52196.9 nT  
Magnetic North is 8.34 degrees East of True North (at 6/27/2017)

To correct azimuth from Magnetic to True add 8.34 degrees



Company: Baker Hughes Incorporated  
Customer/Operator: Ward Petroleum Corporation  
Date Range: 6/29/2017 - 7/2/2017  
Rig Name: PD 460  
Rig Elev/Dat: 20.00 (ft) / GL  
Well: Ritchey #26-1-19HC  
Wellbore: Ritchey #26-1-19HC



Tie/ Proj	Measured Depth (ft)	Inclination (deg)	Azimuth (deg)	Temperature(degF)	True Vertical Depth(ft)	Northing(ft)	Easting(ft)	DLS(deg/100ft)	Vertical Section(ft)
Tie	2.00	0.00	78.10		2.00	0.00	0.00	0.00	0.00
	146.00	0.40	78.10		146.00	0.10	0.49	0.28	-0.04
	242.00	1.00	41.90		241.99	0.80	1.38	0.75	-0.61
	337.00	2.10	42.10		336.96	2.70	3.10	1.16	-2.27
	432.00	2.90	64.20		431.87	5.04	6.43	1.30	-4.14
	527.00	2.80	67.90		526.75	6.96	10.74	0.22	-5.47
	622.00	3.70	51.80		621.60	9.73	15.30	1.34	-7.61
	717.00	4.30	44.40		716.37	14.17	20.20	0.83	-11.36
	812.00	5.00	37.40		811.05	20.00	25.21	0.95	-16.47
	907.00	5.50	41.00		905.65	26.73	30.71	0.63	-22.41
	1003.00	6.20	39.30		1001.15	34.21	37.01	0.75	-28.99
	1098.00	7.80	40.30		1095.44	43.10	44.43	1.69	-36.81
	1193.00	7.70	41.60		1189.58	52.77	52.83	0.21	-45.28
	1288.00	8.70	39.80		1283.60	63.05	61.65	1.09	-54.30
	1383.00	8.20	39.60		1377.57	73.79	70.57	0.53	-63.76
	1442.00	7.90	41.60		1435.99	80.07	75.94	0.70	-69.26
	1502.00	7.57	42.40	87.84	1495.44	86.07	81.35	0.58	-74.49
	1521.00	7.66	44.19	90.55	1514.28	87.90	83.07	1.34	-76.08
	1611.00	7.57	43.93	90.55	1603.48	96.47	91.37	0.11	-83.47
	1700.00	7.47	38.11	93.25	1691.72	105.25	99.00	0.86	-91.15
	1789.00	7.79	36.11	95.95	1779.93	114.67	106.13	0.47	-99.54
	1879.00	7.71	31.86	98.66	1869.11	124.73	112.91	0.64	-108.61
	1968.00	7.52	31.69	98.66	1957.32	134.75	119.12	0.21	-117.72
	2057.00	7.44	34.58	101.36	2045.57	144.45	125.45	0.43	-126.49
	2147.00	7.42	34.48	101.36	2134.81	154.04	132.05	0.03	-135.12
	2237.00	7.48	42.88	104.06	2224.05	163.12	139.33	1.21	-143.15
	2326.00	7.39	56.05	106.77	2312.31	170.57	148.02	1.91	-149.37
	2415.00	7.50	60.43	106.77	2400.56	176.63	157.82	0.65	-154.08
	2505.00	7.47	50.23	109.47	2489.80	183.27	167.42	1.47	-159.39
	2594.00	7.48	36.83	112.17	2578.05	191.61	175.34	1.95	-166.60
	2684.00	7.45	30.57	112.17	2667.29	201.32	181.82	0.90	-175.36
	2774.00	6.78	42.12	114.87	2756.60	210.29	188.35	1.75	-183.38
	2863.00	7.63	41.99	117.58	2844.90	218.58	195.83	0.96	-190.60
	2953.00	7.64	33.72	117.58	2934.10	227.99	203.15	1.22	-198.96
	3042.00	7.24	30.89	120.28	3022.35	237.73	209.31	0.61	-207.79
	3131.00	7.53	40.91	122.98	3110.62	246.95	216.01	1.48	-216.04
	3221.00	7.53	46.31	122.98	3199.84	255.48	224.13	0.79	-223.41
	3310.00	7.57	43.90	125.69	3288.07	263.73	232.42	0.36	-230.49
	3399.00	7.46	36.25	125.69	3376.31	272.61	239.90	1.13	-238.30
	3489.00	7.48	36.41	128.39	3465.55	282.04	246.83	0.03	-246.72
	3578.00	7.44	40.62	128.39	3553.79	291.08	254.02	0.62	-254.72
	3668.00	7.56	51.70	131.09	3643.03	299.17	262.46	1.61	-261.62
	3757.00	7.97	51.85	133.80	3731.21	306.61	271.91	0.46	-267.74
	3847.00	8.01	41.40	136.50	3820.34	315.17	280.96	1.61	-275.02
	3936.00	8.00	26.94	136.50	3908.48	325.34	287.87	2.26	-284.18
	4025.00	8.17	29.55	144.61	3996.60	336.36	293.79	0.45	-294.32
	4115.00	7.35	30.90	139.20	4085.78	346.87	299.90	0.93	-303.91
	4204.00	7.74	35.93	139.20	4174.01	356.60	306.34	0.86	-312.71
	4293.00	7.61	41.23	141.91	4262.21	365.89	313.74	0.81	-320.93
	4383.00	7.64	40.90	141.91	4351.41	374.89	321.59	0.06	-328.81
	4472.00	7.56	50.80	144.61	4439.64	383.06	330.00	1.47	-335.79
	4562.00	8.06	48.03	144.61	4528.80	391.03	339.28	0.70	-342.45
	4651.00	7.97	37.23	147.31	4616.94	400.11	347.65	1.69	-350.34
	4740.00	7.76	26.50	147.31	4705.10	410.40	354.07	1.66	-359.69
	4830.00	7.75	29.60	150.02	4794.28	421.12	359.77	0.46	-369.55
	4919.00	7.96	28.89	150.02	4882.45	431.73	365.72	0.26	-379.28
	5008.00	7.96	22.93	152.72	4970.59	442.80	371.09	0.93	-389.53
	5097.00	7.38	19.27	152.72	5058.79	453.87	375.38	0.85	-399.94
	5187.00	7.60	28.15	152.72	5148.03	464.58	380.10	1.31	-409.92
	5276.00	7.60	35.30	155.42	5236.25	474.57	386.27	1.06	-419.00
	5366.00	7.03	38.55	155.42	5325.52	483.73	393.15	0.78	-427.17
	5455.00	7.82	51.91	158.12	5413.78	491.73	401.31	2.13	-434.01
	5545.00	7.55	47.73	158.12	5502.97	499.48	410.50	0.69	-440.47
	5634.00	7.91	29.64	160.83	5591.17	508.74	417.86	2.75	-448.67
	5724.00	6.92	9.09	163.53	5680.43	519.48	421.78	3.12	-458.79
	5813.00	7.26	37.82	163.53	5768.78	529.22	426.07	3.96	-467.87
	5903.00	7.57	49.78	163.53	5858.03	537.54	434.09	1.75	-475.06
	5992.00	7.95	54.81	166.23	5946.22	544.87	443.59	0.87	-481.06
	6082.00	7.56	61.37	168.94	6035.40	551.29	453.88	1.07	-486.06
	6171.00	7.46	64.22	168.94	6123.64	556.61	464.22	0.43	-489.95
	6260.00	7.68	56.27	171.64	6211.86	562.43	474.37	1.20	-494.37
	6350.00	7.51	58.47	333.83	6301.07	568.84	484.38	0.37	-499.40
	6439.00	7.72	59.11	174.34	6389.29	574.95	494.47	0.25	-504.11
	6529.00	7.77	38.68	174.34	6478.48	582.81	503.46	3.04	-510.70
	6618.00	7.61	26.01	177.05	6566.69	592.80	509.81	1.91	-519.76
	6708.00	7.62	31.07	179.75	6655.90	603.27	515.50	0.74	-529.38
	6797.00	7.96	30.23	179.75	6744.08	613.65	521.65	0.40	-538.85
	6887.00	7.78	31.83	179.75	6833.23	624.21	528.00	0.32	-548.47
	6976.00	7.77	30.74	182.45	6921.41	634.50	534.25	0.17	-557.84
	7065.00	7.33	37.20	182.45	7009.64	644.19	540.76	1.07	-566.58
	7154.00	7.12	70.36	187.86	7097.97	650.57	549.39	4.63	-571.75
	7244.00	7.95	161.79	185.16	7187.46	646.52	556.61	11.99	-566.78
	7333.00	14.04	179.17	182.45	7274.80	629.86	558.69	7.72	-549.99
	7423.00	23.29	174.06	185.16	7359.98	601.18	560.69	10.43	-521.30
	7512.00	31.92	171.17	185.16	7438.78	560.35	566.14	9.81	-480.11
	7601.00	41.48	172.27	190.56	7510.06	507.77	573.73	10.77	-426.99
	7691.00	50.37	177.08	190.56	7572.62	443.48	579.52	10.59	-362.49
	7780.00	60.42	179.11	193.27	7623.10	370.36	581.87	11.45	-289.71
	7869.00	68.58	176.26	193.27	7661.39	290.18	585.18	9.61	-209.80
	7959.00	76.58	175.04	206.78	7688.31	204.62	591.71	8.98	-124.14

	8048.00	85.75	176.10	306.80	7701.97	117.04	598.48	10.37	-36.43
	8137.00	87.08	177.45	198.67	7707.53	28.36	603.48	2.13	52.13
	8227.00	88.58	179.28	198.67	7710.94	-61.54	606.05	2.63	141.56
	8316.00	89.82	180.22	204.08	7712.18	-150.52	606.43	1.75	229.81
	8406.00	90.00	179.34	206.78	7712.32	-240.52	606.78	1.00	319.06
	8495.00	89.91	178.65	206.78	7712.39	-329.51	608.34	0.78	407.46
	8584.00	89.88	178.83	298.69	7712.56	-418.49	610.30	0.21	495.91
	8674.00	90.00	178.59	209.48	7712.65	-508.46	612.32	0.30	585.36
	8763.00	89.91	178.76	209.48	7712.72	-597.44	614.38	0.22	673.82
	8853.00	88.61	179.78	209.48	7713.88	-687.42	615.53	1.84	763.15
	8942.00	89.60	180.51	212.19	7715.27	-776.41	615.30	1.38	851.32
	9031.00	89.45	178.79	212.19	7716.01	-865.40	615.85	1.94	939.59
	9121.00	90.15	179.29	212.19	7716.33	-955.39	617.35	0.96	1028.98
	9210.00	88.71	180.19	214.89	7717.21	-1044.38	617.76	1.91	1117.24
	9300.00	89.69	185.06	214.89	7718.47	-1134.25	613.64	5.52	1205.76
	9389.00	89.94	186.26	214.89	7718.76	-1222.81	604.86	1.38	1292.37
	9479.00	90.06	182.71	223.00	7718.76	-1312.52	597.82	3.95	1380.35
	9568.00	90.03	182.35	212.19	7718.69	-1401.43	593.90	0.41	1467.95
	9657.00	90.06	183.02	214.89	7718.62	-1490.34	589.73	0.75	1555.51
	9747.00	90.09	182.54	212.19	7718.50	-1580.23	585.36	0.53	1644.02
	9837.00	90.03	181.33	217.59	7718.40	-1670.18	582.32	1.35	1732.77
	9926.00	90.09	180.08	217.59	7718.31	-1759.17	581.23	1.41	1820.82
	10015.00	90.06	178.97	220.30	7718.20	-1848.16	581.96	1.25	1909.13
	10104.00	90.09	177.79	220.30	7718.08	-1937.13	584.48	1.33	1997.64
	10193.00	90.18	176.64	223.00	7717.87	-2026.02	588.80	1.30	2086.31
	10283.00	89.66	175.67	223.00	7717.99	-2115.81	594.84	1.22	2176.12
	10373.00	89.51	175.86	223.00	7718.65	-2205.57	601.49	0.27	2265.95
	10462.00	89.60	177.11	217.59	7719.34	-2294.39	606.94	1.41	2354.72
	10551.00	89.60	177.78	225.70	7719.96	-2383.30	610.91	0.75	2443.37
	10641.00	89.63	178.94	228.41	7720.56	-2473.26	613.49	1.29	2532.87
	10730.00	89.69	180.29	231.11	7721.09	-2562.26	614.08	1.52	2621.15
	10819.00	90.00	180.48	228.41	7721.33	-2651.26	613.49	0.41	2709.28
	10908.00	91.05	180.47	228.41	7720.52	-2740.25	612.75	1.18	2797.39
	10998.00	90.98	181.34	233.81	7718.92	-2830.22	611.33	0.97	2886.37
	11087.00	90.98	181.90	233.81	7717.40	-2919.17	608.81	0.63	2974.20
	11176.00	91.11	183.87	233.81	7715.78	-3008.04	604.33	2.22	3061.68
	11266.00	90.12	183.66	233.81	7714.81	-3097.84	598.42	1.12	3149.90
	11355.00	89.91	182.55	255.44	7714.79	-3186.71	593.60	1.27	3237.34
	11445.00	90.25	181.61	255.44	7714.66	-3276.65	590.34	1.11	3326.04
	11534.00	90.06	179.72	239.22	7714.42	-3365.64	589.30	2.13	3414.11
	11623.00	89.91	179.32	239.22	7714.44	-3454.63	590.05	0.48	3502.41
	11713.00	90.22	181.38	239.22	7714.34	-3544.63	589.50	2.31	3591.53
	11802.00	90.15	181.82	239.22	7714.06	-3633.59	587.01	0.50	3679.38
	11891.00	90.06	180.53	241.92	7713.89	-3722.57	585.19	1.45	3767.32
	11981.00	90.06	180.88	233.81	7713.80	-3812.56	584.08	0.39	3856.37
	12070.00	90.18	181.75	268.95	7713.61	-3901.54	582.04	0.99	3944.29
	12159.00	89.91	180.81	241.92	7713.54	-3990.52	580.05	1.10	4032.21
	12249.00	89.69	179.45	241.92	7713.86	-4080.51	579.85	1.53	4121.38
	12338.00	89.94	178.24	241.92	7714.14	-4169.49	581.64	1.39	4209.81
	12428.00	89.75	177.85	125.69	7714.39	-4259.44	584.71	0.48	4299.36
	12517.00	89.91	177.41	244.62	7714.65	-4348.36	588.39	0.53	4387.99
	12562.00	89.69	177.53	239.22	7714.81	-4393.32	590.38	0.56	4432.81
Proj	12586.00	89.69	177.53		7714.94	-4417.30	591.41	0.00	4456.71