



00517729



TRILOBITE TESTING, L.L.C.

TEST REPORT

AL

TRILOBITE TESTING, L.L.C.

P.O. Box 362 • Hays, Kansas 67601

Drill-Stem Test Data

Well Name CHUCK #1 Test No. 1 Date 3/10/94
Company MULL DRILLING COMPANY, INC. Zone CHEROKEE
Address BOX 2758 WICHITA KS 67202 Elevation 4446
Co. Rep./Geo. ROGER MARTIN Cont. KUDU DRLG Est. Ft. of Pay _____
Location: Sec. 26 Twp. 15S Rge. 50W Co. CHEYENNE State CO

Interval Tested 4751-4810 Drill Pipe Size 4.5" XH
Anchor Length 59 Wt. Pipe I.D. - 2.7 Ft. Run _____
Top Packer Depth 4746 Drill Collar - 2.25 Ft. Run 422
Bottom Packer Depth 4751 Mud Wt. 9.2 lb/Gal.
Total Depth 4810 Viscosity 59 Filtrate 7.4

Tool Open @ 9:46 PM Initial Blow OPEN 1/2" FOR 15 MINUTES-DIED TO NO BLOW IN 28
MINUTES

Final Blow NO BLOW - FLUSHED TOOL - NO BLOW
(GOOD FLUSH)

Recovery - Total Feet 30 Flush Tool? YES

Rec. 30 Feet of MUD
Rec. _____ Feet of _____
Rec. _____ Feet of _____
Rec. _____ Feet of _____
Rec. _____ Feet of _____

BHT 118 °F Gravity _____ °API @ _____ °F Corrected Gravity _____ °API
RW _____ @ _____ °F Chlorides _____ ppm Recovery Chlorides 200 ppm System

(A) Initial Hydrostatic Mud 2373.3 PSI AK1 Recorder No. 11057 Range 4500

(B) First Initial Flow Pressure 33.3 PSI @ (depth) 4753 w / Clock No. 30401

(C) First Final Flow Pressure 41.1 PSI AK1 Recorder No. 11058 Range 4500

(D) Initial Shut-in Pressure 316.6 PSI @ (depth) 4805 w / Clock No. 25108

(E) Second Initial Flow Pressure 36.6 PSI AK1 Recorder No. _____ Range _____

(F) Second Final Flow Pressure 38.8 PSI @ (depth) _____ w / Clock No. _____

(G) Final Shut-in Pressure 291.1 PSI Initial Opening 30 Final Flow 30

(H) Final Hydrostatic Mud 2349.7 PSI Initial Shut-in 45 Final Shut-in 45

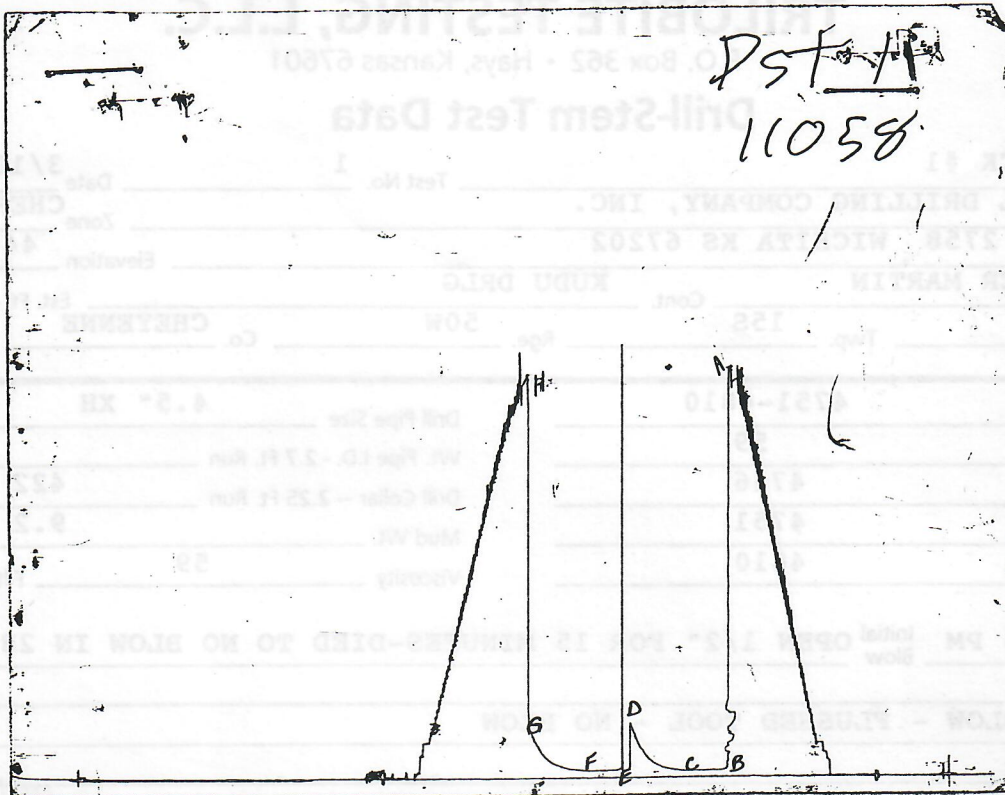
Our Representative MARK HERSKOWITZ

RECEIVED

APR 8 - 1994

COLUMBIA OIL & GAS CONS. COMM.

CHART PAGE



This is an actual photograph of recorder chart# 11058

	FIELD READING	OFFICE READING
--	------------------	-------------------

(A) INITIAL HYDROSTATIC MUD	2300	2373.3
(B) FIRST INITIAL FLOW PRESSURE	33	33.3
(C) FIRST FINAL FLOW PRESSURE	44	41.1
(D) INITIAL CLOSED-IN PRESSURE	300	316.6
(E) SECOND INITIAL FLOW PRESSURE	44	36.6
(F) SECOND FINAL FLOW PRESSURE	44	38.8
(G) FINAL CLOSED-IN PRESSURE	277	291.1
(H) FINAL HYDROSTATIC MUD	2278	2349.7

TRILOBITE TESTING, L.L.C.

P.O. Box 362 • Hays, Kansas 67601

Drill-Stem Test Data

Well Name CHUCK #1 Test No. 2 Date 3/14/94
Company MULL DRILLING COMPANY, INC. Zone ST LOUIS
Address BOX 2758 WICHITA KS 67202 Elevation 4446
Co. Rep./Geo. ROGER MARTIN Cont. KUDU DRLG Est. Ft. of Pay _____
Location: Sec. 26 Twp. 15S Rge. 50W Co. CHEYENNE State CO

Interval Tested 5485-5525 Drill Pipe Size 4.5" XH
Anchor Length 40 Wt. Pipe I.D. - 2.7 Ft. Run _____
Top Packer Depth 5480 Drill Collar - 2.25 Ft. Run 453
Bottom Packer Depth 5485 Mud Wt. 9.1 lb/Gal.
Total Depth 5525 Viscosity 63 Filtrate 6.4

Tool Open @ 4:38 AM Initial Blow GOOD BLOW OFF BOTTOM IN 11 MINUTES
7" BLOW BACK ON ISI
Final Blow STRONG BLOW OFF BOTTOM IN 1 MINUTE
BLOW BACK OFF BOTTOM OF BUCKET IN 14 MINUTES

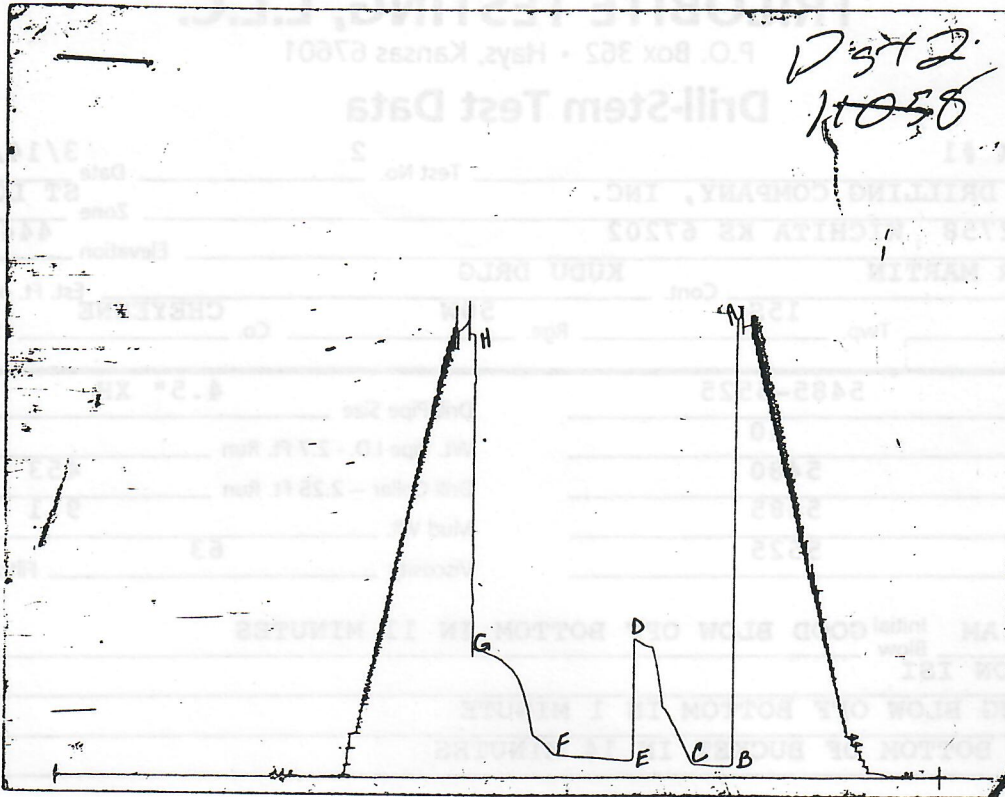
Recovery - Total Feet 275 Flush Tool? NO
Rec. 2966 Feet of GAS IN PIPE
Rec. 90 Feet of VERY SLIGHTLY OIL CUT MUD- 1% OIL/ 99% MUD
Rec. 185 Feet of HEAVY GAS & OIL CUT MUD- 70% GAS/ 15% OIL/ 15% MUD
Rec. _____ Feet of _____
Rec. _____ Feet of _____

BHT 138 °F Gravity _____ °API @ _____ °F Corrected Gravity _____ °API
RW _____ @ _____ °F Chlorides _____ ppm Recovery Chlorides 190 ppm System

(A) Initial Hydrostatic Mud 2659.1 PSI AK1 Recorder No. 11057 Range 4500
(B) First Initial Flow Pressure 64.4 PSI @ (depth) 5489 w / Clock No. 30401
(C) First Final Flow Pressure 74.4 PSI AK1 Recorder No. 11058 Range 4500
(D) Initial Shut-in Pressure 804.2 PSI @ (depth) 5520 w / Clock No. 25108
(E) Second Initial Flow Pressure 100.0 PSI AK1 Recorder No. _____ Range _____
(F) Second Final Flow Pressure 128.8 PSI @ (depth) _____ w / Clock No. _____
(G) Final Shut-in Pressure 744.2 PSI Initial Opening 30 Final Flow 60
(H) Final Hydrostatic Mud 2568.3 PSI Initial Shut-in 45 Final Shut-in 60

Our Representative MARK HERSKOWITZ

CHART PAGE



This is an actual photograph of recorder chart# 11058

	FIELD READING	OFFICE READING
--	------------------	-------------------

(A) INITIAL HYDROSTATIC MUD	2659	2659.1
(B) FIRST INITIAL FLOW PRESSURE	55	64.4
(C) FIRST FINAL FLOW PRESSURE	77	74.4
(D) INITIAL CLOSED-IN PRESSURE	782	804.2
(E) SECOND INITIAL FLOW PRESSURE	88	100
(F) SECOND FINAL FLOW PRESSURE	111	128.8
(G) FINAL CLOSED-IN PRESSURE	737	744.2
(H) FINAL HYDROSTATIC MUD	2636	2568.3