

HALLIBURTON

iCem[®] Service

CHEVRON - MID-CONTINENT EBIZ

United States of America, COLORADO

For: KEVIN

Date: Saturday, January 19, 2019

A C MCLAUGHLIN 62X

RIO BLANCO, A C MCLAUGHLIN 62X

SQUEEZE A C MCLAUGHLIN 62X

Job Date: Saturday, January 19, 2019

Sincerely,

JAMES LEIST

Legal Notice

Disclaimer:

All information in this report is provided subject to the terms and conditions which govern the services provided by Halliburton. Halliburton personnel use their best efforts in gathering information and their best judgment in interpreting it, but any interpretation, research, analysis or recommendation furnished by Halliburton are opinions based upon inferences from measurements and empirical relationships and assumptions, which inferences and empirical relationships and assumptions are not infallible, and with respect to which professionals in the industry may differ. iCem 3D Displacement results are used to understand how fluids intermix during a cement job. Simulation and 3D displacement results are not intended as and should not be used as a replacement for bond logs in determining top of cement. Current 3D model calculations are known to model more volume than the input volume for standard cases due to known calculation improvements required. For rotational cases, the modeled volume will be impacted by the same calculations impacting the standard cases, as well as additional constraints imposed to make the calculation time required operationally feasible. Therefore, until further notice, 3D displacement results should not be used for replacement of a bond log, or used as an identifier of top of cement. HALLIBURTON IS UNABLE TO GUARANTEE THE ACCURACY OF ANY CHART INTERPRETATION, RESEARCH ANALYSIS, OR JOB RECOMMENDATION and any interpretation or recommendation is not for use of or reliance upon by any third party. The customer has full responsibility for any of its decisions which are based on the information provided in this report.

HALLIBURTON

Customer: CHEVRON - MID-CONTINENT EBIZ
 Job: SQUEEZE PERFS
 Case: SQUEEZE A C MCLAUGHLIN 62X | SO#: 905427359

2.0 Real-Time Job Summary

2.1 Job Event Log

Type	Seq. No.	Activity	Graph Label	Date	Time	Source	DH Density (ppg)	Comb Pump Rate (bbt/min)	PS Pump Press (psi)	Pump Stg Tot (bbt)	Comments
Event	1	Call Out	Call Out	1/19/2019	00:01:00	USER					
Event	2	Pre-Convoy Safety Meeting	Pre-Convoy Safety Meeting	1/19/2019	01:45:00	USER					JOURNEY MANAGEMENT COMPLETE, AS WELL AS JSA
Event	3	Crew Leave Yard	Crew Leave Yard	1/19/2019	02:00:00	USER					
Event	4	Arrive At Loc	Arrive At Loc	1/19/2019	07:00:00	USER					JOURNEY MANAGEMENT CLOSED OUT.
Event	5	Assessment Of Location Safety Meeting	Assessment Of Location Safety Meeting	1/19/2019	07:20:00	USER					
Event	6	Pre-Rig Up Safety Meeting	Pre-Rig Up Safety Meeting	1/19/2019	07:20:00	USER					JSA COMPLETE
Event	7	Rig-Up Equipment	Rig-Up Equipment	1/19/2019	07:25:00	USER					USED SQUEEZE MANIFOLD, HOOKED INTO BACK SIDE TO REVERSE CIRCULATE. WATER TEST: PH-7, CL-0, TEMP-53
Event	8	Other	Other	1/19/2019	08:00:00	USER					WELL INFO: 7" KLINE RBP SET AT 4208', 7" 23# K-55 CASING, 2 7/8" 6.5# J-55 TUBING SET @ 4139', 7" TST PACKER AT 3628'
Event	9	Other	Other	1/19/2019	08:45:00	USER					MUD SCALES CHECKED WITH WATER PRIOR TO JOB.
Event	10	Pre-Job Safety Meeting	Pre-Job Safety Meeting	1/19/2019	08:50:00	USER					JSA COMPLETE
Event	11	Start Job	Start Job	1/19/2019	09:05:00	COMS					

HALLIBURTON

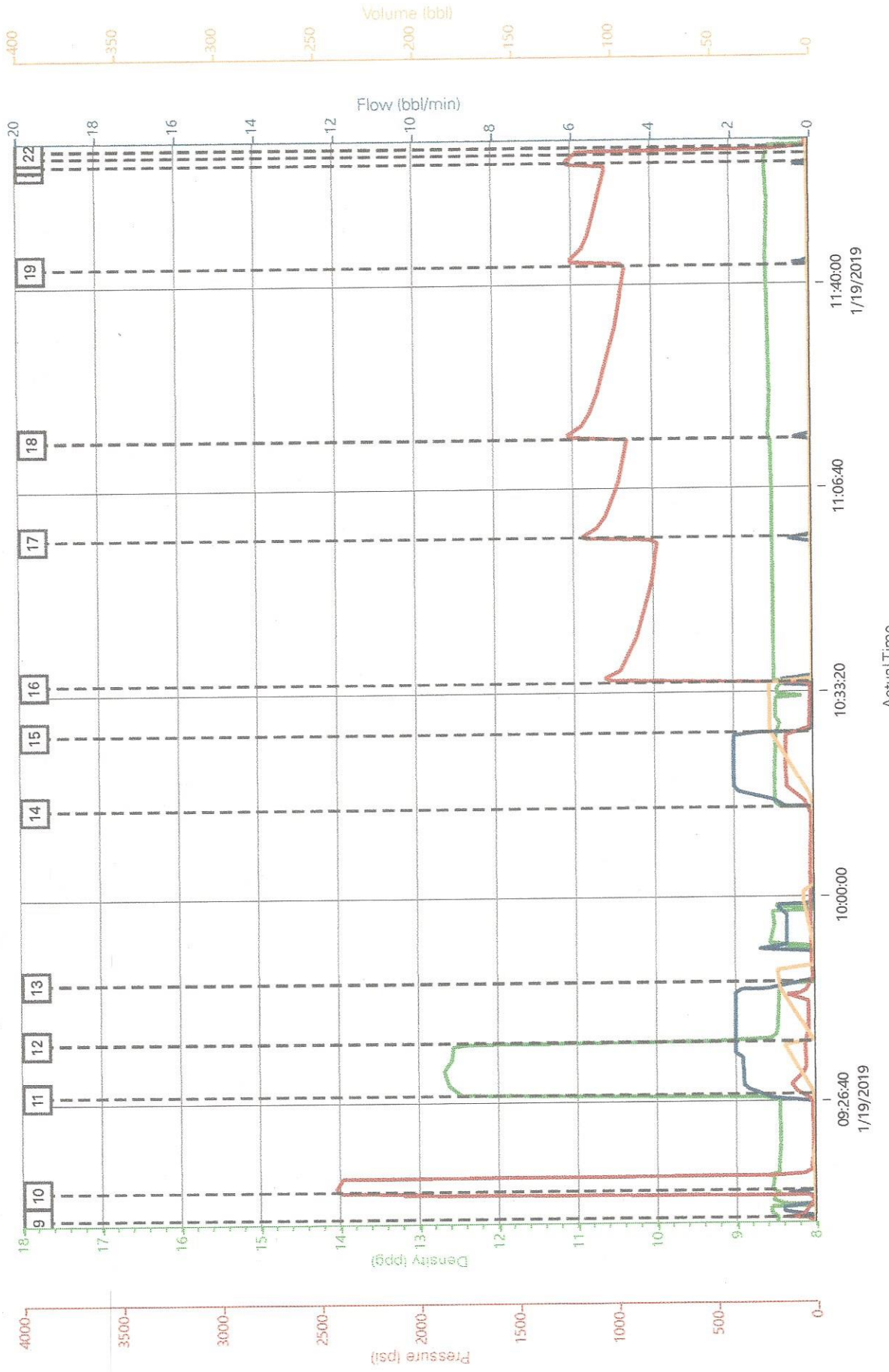
Customer: CHEVRON - MID-CONTINENT EBIZ
 Job: SQUEEZE PERES
 Case: SQUEEZE A C MCLAUGHLIN 62X | SO#: 905427359

Event	Description	Date	Time	User	8.33	2.50	170.00	2.00	ESTABLISHED CIRCULATION
Event 12	Circulate Well	1/19/2019	09:07:45	USER	8.33	2.50	170.00	2.00	ESTABLISHED CIRCULATION
Event 13	Test Lines	1/19/2019	09:12:13	COM5			2460.00		2460 PSI
Event 14	Pump Lead Cement	1/19/2019	09:27:52	COM5	12.50	2.00	83.00	16.00	100 SKS FINECEM, 12.5 PPG, 0.90 FT3/SK, 4.49 GAL/SK
Event 15	Pump Displacement	1/19/2019	09:36:20	USER	8.33	2.00	38.00	21.50	FRESH WATER
Event 16	Shutdown	1/19/2019	09:46:03	USER					RIG PULLED 8 JOINTS OF TUBING, END OF TUBING AT 3634'
Event 17	Reverse Out	1/19/2019	10:14:34	USER	8.33	2.00	23.00	24.00	REVERSE CIRCULATE THE WELL, RETURNED 1 BBL OF CEMENT TO SURFACE
Event 18	Standby - Other - see comments	1/19/2019	10:26:47	USER					SHUTDOWN, SET PACKER
Event 19	Start Squeeze	1/19/2019	10:34:58	USER	8.33	0.80	1085.00	0.30	
Event 20	Resume Squeeze	1/19/2019	10:58:41	USER	8.33	0.40	1166.00	0.30	
Event 21	Resume Squeeze	1/19/2019	11:14:47	USER	8.33	0.40	1201.00	0.20	
Event 22	Resume Squeeze	1/19/2019	11:42:59	USER	8.33	0.40	1240.00	0.20	
Event 23	Resume Squeeze	1/19/2019	11:59:55	USER	8.33	0.40	1239.00	0.20	
Event 24	Shut In Well	1/19/2019	12:01:18	COM5	8.33	0.00	1196.00		SQUEEZED AWAY A TOTAL OF 1.2 BBLs
Event 25	End Job	1/19/2019	12:02:27	COM5					
Event 26	Post-Job Safety Meeting (Pre Rig-Down)	1/19/2019	12:09:34	USER					THANK YOU FOR USING HALLIBURTON CEMENT, JAMES LEIST AND CREW
Event 27	Crew Leave Location	1/19/2019	12:30:50	USER					



(v. 4.5.139)
 Created: Saturday, January 19, 2019

CHEVRON - A C MCLAUGHLIN 62X - SQUEEZE PERFORMATIONS 7"



— DH Density (ppg) 8.55
 — Comb Pump Rate (bbl/min) 1.6
 — PS Pump Press (psi) 52
 — Pump Stg Tot (bbl) 8