

# HALLIBURTON

iCem<sup>®</sup> Service

## **TERRA ENERGY PARTNERS**

United States of America, COLORADO

### **For: Terra**

Date: Wednesday, October 03, 2018

### **CLOUGH NR 343-3 Surface**

API# 05-045-23910

Sincerely,

**Grand Junction Cement Engineering**

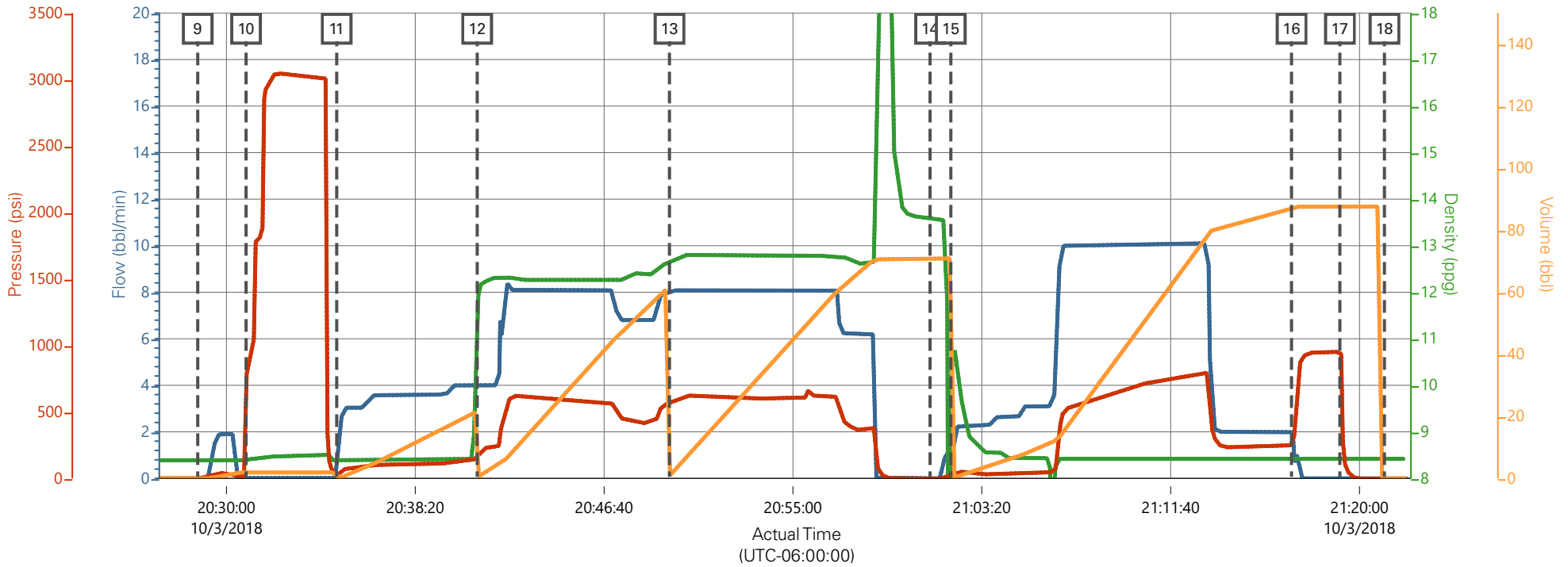
## 2.0 Real-Time Job Summary

### 2.1 Job Event Log

Type	Seq. No.	Graph Label	Date	Time	Source	Comb Pump Rate <i>(bbl/min)</i>	DH Density <i>(ppg)</i>	PS Pump Press <i>(psi)</i>	Pump Stg Tot <i>(bbl)</i>	Comments
Event	1	Call Out	10/3/2018	13:00:00	USER					REQUESTED ON LOCATION 10/3/18 @ 18:00
Event	2	Depart Yard Safety Meeting	10/3/2018	15:55:00	USER					JSA COMPLETED
Event	3	Crew Leave Shop	10/3/2018	16:00:00	USER					
Event	4	Arrive At Loc	10/3/2018	18:00:00	USER					RIG RUNNING CASING
Event	5	Assessment Of Location Safety Meeting	10/3/2018	18:05:00	USER					JSA COMPLETED
Event	6	Pre-Rig Up Safety Meeting	10/3/2018	18:25:00	USER					JSA COMPLETED
Event	7	Rig-Up Equipment	10/3/2018	18:30:00	USER					
Event	8	Pre-Job Safety Meeting	10/3/2018	20:00:00	USER					JSA COMPLETED, PRESSURIZED MUD SCALES CALIBRATED TO FRESH WATER
Event	9	Start Job	10/3/2018	20:28:44	COM4					9 5/8" -36# CASING IN 13 1/2" OH, TD 1138', TP 1128', ST 44.3', MUD 10.0 PPG, WATER TEMP 60, PH 7 CHLORIDES 0
Event	10	Test Lines	10/3/2018	20:30:52	COM4			3000.00		
Event	11	Pump Spacer 1	10/3/2018	20:34:52	COM4	4.00	8.33	100.00	20.00	20 BBLS FRESH WATER
Event	12	Pump Lead Cement	10/3/2018	20:41:04	COM4	8.00	12.30	585.00	53.00	53 BBLS LEAD CEMENT, 125 SKS @ 12.3 PPG / 2.38 YLD / 13.77 GAL/SK
Event	13	Pump Tail Cement	10/3/2018	20:49:33	COM4	8.00	12.80	600.00	65.80	65.8 BBLS TAIL CEMENT, 175 SKS @ 12.8 PPG / 2.11 YLD / 11.78 GAL/SK
Event	14	Drop Top Plug	10/3/2018	21:01:03	COM4					PLUG AWAY

Event	15	Pump Displacement	10/3/2018	21:01:58	COM4	10.00	8.33	800.00	85.30	85.3 BBLS FRESH WATER DISPLACEMENT
Event	16	Bump Plug	10/3/2018	21:17:00	COM4	2.00	8.33	245.00	85.30	PLUG BUMPED AT CALCULATED, FINAL CIRCULATING PRESSURE 245 PSI @ 2 BBL/MIN, BROUGHT TO 920 PSI
Event	17	CHECK FLOATS	10/3/2018	21:19:08	COM4					FLOATS HELD, 1/2 BBL BACK TO PUMP
Event	18	End Job	10/3/2018	21:21:06	COM4					GOOD RETURNS THROUGHOUT, PIPE LEFT STATIC, 26 BBLS CEMENT TO SURFACE, 40# SUGAR AND 1 - 9 5/8" TOP PLUG USED, NO ADD HOURS CHARGED
Event	19	Pre-Rig Down Safety Meeting	10/3/2018	21:30:00	USER					JSA COMPLETED
Event	20	Rig-Down Equipment	10/3/2018	21:35:00	USER					
Event	21	Pre-Convoy Safety Meeting	10/3/2018	21:55:00	USER					JSA COMPLETED
Event	22	Crew Leave Location	10/3/2018	22:00:00	USER					THANK YOU FOR CHOOSING HALLIBURTON CEMENTING OF GRAND JUNCTION, CO - RYAN MARTIN AND CREW

# TEP - CLOUGH NR 343-3 - 9 5/8" SURFACE CASING



— Comb Pump Rate (bbl/min) 0    
 — DH Density (ppg) 8.42    
 — PS Pump Press (psi) -5    
 — Pump Stg Tot (bbl) 0

Description	Actual Time (UTC-06:00:00)	Comb Pump Rate (bbl/min)	DH Density (ppg)	PS Pump Press (psi)	Pump Stg Tot (bbl)
9 Start Job	20:28:44	0.00	8.39	0.00	0.00
10 Test Lines	20:30:52	0.10	8.39	12.00	1.90
11 Pump Spacer 1	20:34:52	0.00	8.39	20.00	0.00
12 Pump Lead Cement	20:41:04	4.00	11.35	157.00	0.30
13 Pump Tail Cement	20:49:33	7.90	12.66	569.00	0.70
14 Drop Top Plug	21:01:03	0.00	13.57	-5.00	70.60
15 Pump Displacement	21:01:58	1.20	9.19	17.00	0.00
16 Bump Plug	21:17:00	2.00	8.42	248.00	87.10
17 CHECK FLOATS	21:19:08	0.00	8.44	951.00	87.60
18 End Job	21:21:06	0.00	8.42	-5.00	0.00

**HALLIBURTON** | iCem® Service

Created: 2018-10-03 18:49:43, (UTC-06:00), Version: 4.5.139

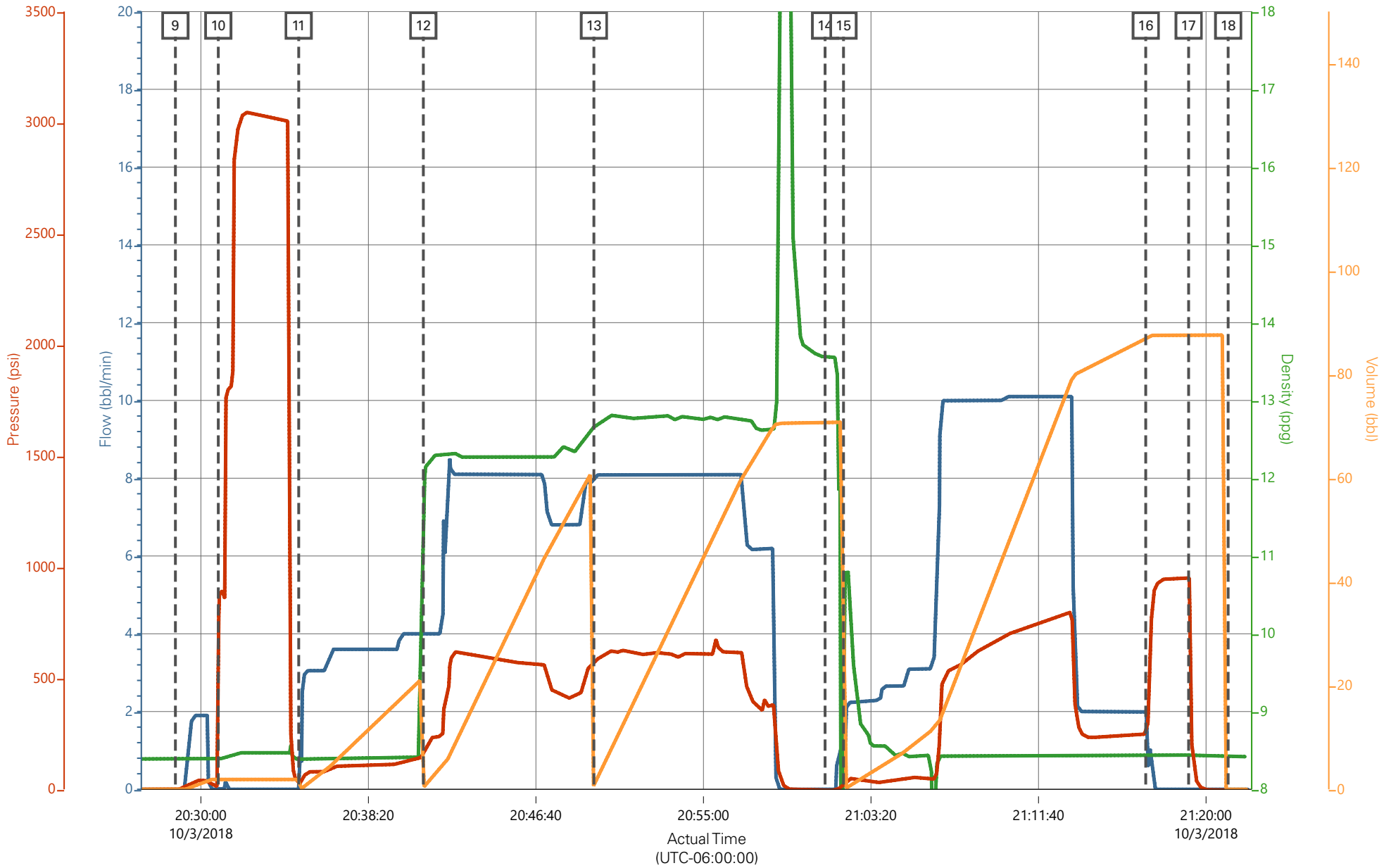
Edit

Customer : TERRA ENERGY PARTNERS  
 Representative : NATHAN BARR

Job Date : 10/4/2018  
 Sales Order # : 905173934

Well : CLOUGH NR 343-3  
 ELITE #4 : KIEL CHRIST / RYAN MARTIN

# TEP - CLOUGH NR 343-3 - 9 5/8" SURFACE CASING



— Comb Pump Rate (bbl/min) 0    
 — DH Density (ppg) 8.42    
 — PS Pump Press (psi) -5    
 — Pump Stg Tot (bbl) 0