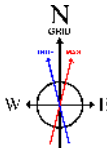


# NICKEL ROAD OPERATING

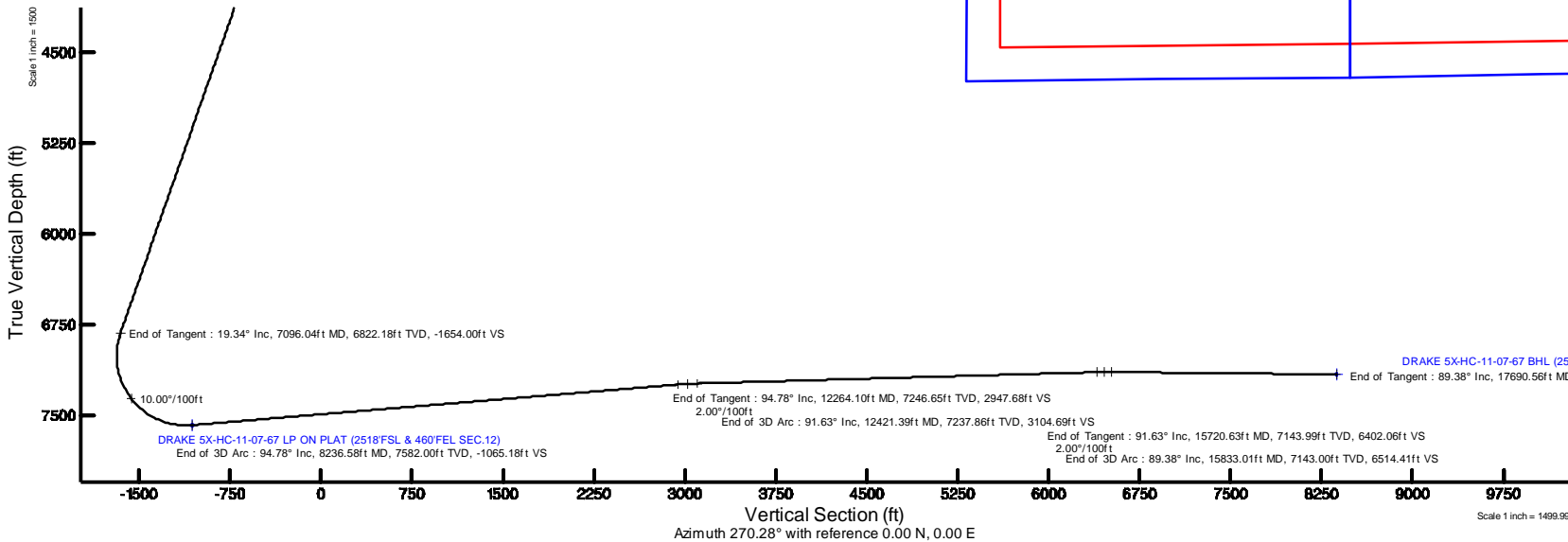
Location: COLORADO Slot: SLOT#03 DRAKE 5X-HC-11-07-67 (2369'FSL & 1708'FEL SEC.12)  
Field: WELD COUNTY (NAD83/GRID NORTH) Well: DRAKE 5X-HC-11-07-67  
Facility: SEC.12-07N-R67W Wellbore: DRAKE 5X-HC-11-07-67 PWB

Plot reference wellpath is DRAKE 5X-HC-11-07-67 REV-A.0 PWB	Grid System: NAD83 / Lambert Colorado SP, Northern Zone (501), US feet
True vertical depths are referenced to RIG (16) (RKB)	North Reference: Grid north
Measured depths are referenced to RIG (16) (RKB)	Scale: True distance
RIG (16) (RKB) to Mean Sea Level: 5104 feet	Depths are in feet
Mean Sea Level to Ground level (At Slot: SLOT#03 DRAKE 5X-HC-11-07-67 (2369'FSL & 1708'FEL SEC.12)): 0 feet	Created by: wagnjam on 2019-01-28
Coordinates are in feet referenced to Slot	Database: WA DENVER

Location Information							
Facility Name				Grid East (US)	Grid North (US)	Latitude	Longitude
SEC.12-07N-R67W				3183871.851	1457749.807	40°55'16.933"N	104°50'16.656"W
Slot		Local N (ft)	Local E (ft)	Grid East (US)	Grid North (US)	Latitude	Longitude
SLOT#03 DRAKE 5X-HC-11-07-67 (2369'FSL & 1708'FEL SEC.12)		0.00	0.00	3183871.851	1457749.807	40°55'16.933"N	104°50'16.656"W
IG (16) (RKB) to Ground level (At Slot: SLOT#03 DRAKE 5X-HC-11-07-67 (2369'FSL & 1708'FEL SEC.12))						5104ft	
Mean Sea Level to Ground level (At Slot: SLOT#03 DRAKE 5X-HC-11-07-67 (2369'FSL & 1708'FEL SEC.12))						0ft	
IG (16) (RKB) to Mean Sea Level						5104ft	
Survey Program							
Start MD (ft)		End MD (ft)	Tool	Model	Log Name/Comment	Wellbore	
16.00		17691.00	BHI NavTrak	BHI NavTrak (Rotating)		DRAKE 5X-HC-11-07-67 PWB	



BGGM (1900.0 to 2020.0) Dip: 66.91° Field: 52332.3 nT  
Magnetic North is 8.27 degrees East of True North (at 1/23/2019)  
Grid North is 0.43 degrees East of True North  
To correct azimuth from True to Grid subtract 0.43 degrees  
To correct azimuth from Magnetic to Grid add 7.84 degrees

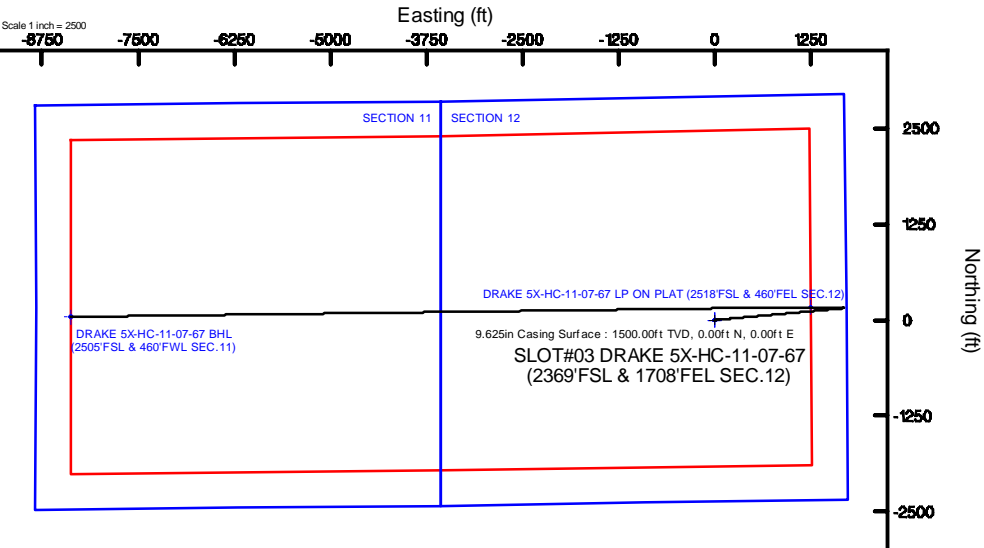


## Targets

Name	MD (ft)	TVD (ft)	Local N (ft)	Local E (ft)	Grid East (US)	Grid North (US)	Latitude	Longitude
SEC.11.707N-R67W		0.00	0.00	0.00	3183871.85	1457749.81	40°55'16.933"N	104°50'16.656"W
SEC.12.707N-R67W		0.00	0.00	0.00	3183871.85	1457749.81	40°55'16.933"N	104°50'16.656"W
DRAKE 5X-HC-11-07-67 BHL (2505'FSL & 460'FWL SEC.11)	17690.56	7163.00	40.91	-8371.45	3175500.64	1457730.52	40°55'17.341"N	104°50'05.156"W
DRAKE 5X-HC-11-07-67 LP ON PLAT (2518'FSL & 460'FEL SEC.12)		7582.00	165.64	1066.00	3185116.76	1457915.24	40°55'18.478"N	104°50'00.478"W
DRAKE 5X-HC-11-07-67 LP REV1 (2518'FSL & 441'FEL SEC.12)	8236.58	7582.00	165.64	1066.00	3184937.82	1457915.24	40°55'18.491"N	104°50'02.823"W
SEC.11&12.707N-R67W HARDLINE 460'		7582.00	0.00	0.00	3183871.85	1457749.81	40°55'16.933"N	104°50'16.656"W

## Well Profile Data

Design Comment	MD (ft)	Inc (°)	Az (°)	TVD (ft)	Local N (ft)	Local E (ft)	DLS (°/100ft)	VS (ft)
Tie On	16.00	0.000	84.791	16.00	0.00	0.00	0.00	0.00
End of Tangent	1600.00	0.000	84.791	1600.00	0.00	0.00	0.00	0.00
End of Build	2567.04	19.341	84.791	2548.78	14.68	161.01	2.00	-160.93
End of Tangent	7096.04	19.341	84.791	6822.18	150.85	1654.76	0.00	-1654.00
End of 3D Arc	8236.58	94.776	269.234	7582.00	165.64	1066.00	10.00	-1065.18
End of Tangent	12264.10	94.776	269.234	7246.65	112.00	-2947.17	0.00	2947.68
End of 3D Arc	12421.39	91.630	269.254	7237.86	109.93	-3104.19	2.00	3104.69
End of Tangent	15720.63	91.630	269.254	7143.99	67.00	-6401.81	0.00	6402.06
End of 3D Arc	15833.01	89.383	269.241	7143.00	65.52	-6514.16	2.00	6514.41
End of Tangent	17690.56	89.383	269.241	7163.00	40.91	-8371.45	0.00	8371.55

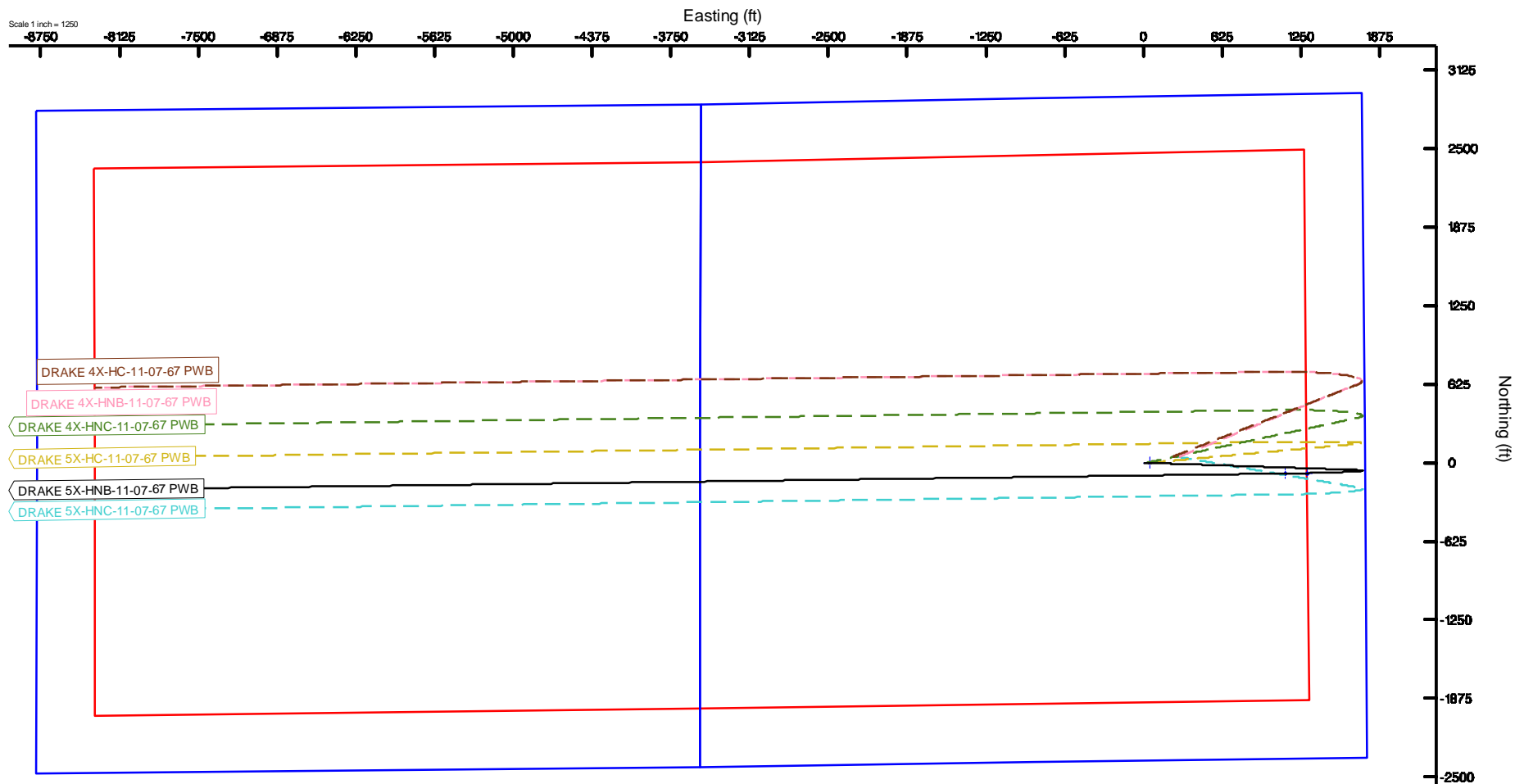


# NICKEL ROAD OPERATING

Location: COLORADO Slot: SLOT#01 DRAKE 5X-HNB-11-07-67 (2370'FSL & 1758'FEL SEC.12)  
Field: WELD COUNTY (NAD83/GRID NORTH) Well: DRAKE 5X-HNB-11-07-67  
Facility: SEC.12-07N-R67W Wellbore: DRAKE 5X-HNB-11-07-67 PWB

Plot reference wellbore is DRAKE 5X-HNB-11-07-67 SEC 12-07N-R67W	Grid System: NAD83 (Lambert Conformal Conic SP, Northern Zone 09N), U.S. feet
True vertical depths are referenced to RIG (12) (DRAKE)	North Reference: Grid North
Measured depths are referenced to RIG (12) (DRAKE)	Scale: True Distance
RIG (12) (DRAKE) is Mean Sea Level (MSL) feet	Depths are in feet
Mean Sea Level is Ground Level (ft) for SLOT#01 DRAKE 5X-HNB-11-07-67 (2370'FSL & 1758'FEL SEC.12) Well	Created by: wellpath.com 2016-01-05
Coordinates are in feet referenced to DTM	Database: WGS 84/2011-01-01

Scale 1 inch = 1250'

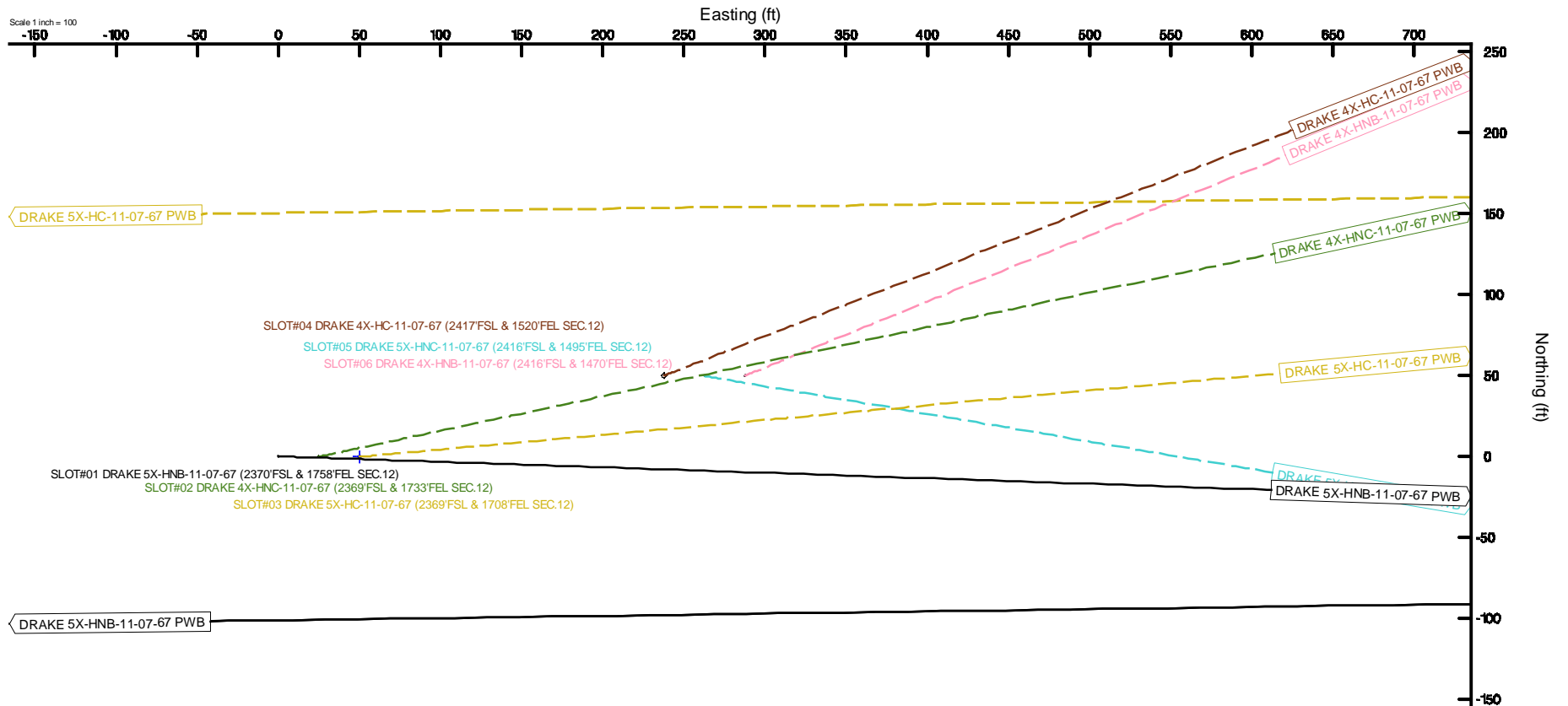


# NICKEL ROAD OPERATING

Location: COLORADO Slot: SLOT#01 DRAKE 5X-HNB-11-07-67 (2370'FSL & 1758'FEL SEC.12)  
Field: WELD COUNTY (NAD83/GRID NORTH) Well: DRAKE 5X-HNB-11-07-67  
Facility: SEC.12-07N-R67W Wellbore: DRAKE 5X-HNB-11-07-67 PWB



True Vertical Depth is DRAKE 5X-HNB-11-07-67 PWB	Grid System: NAD83 Corner Coordinates (P, Northern Zone 2011 US Nat)
True Vertical Depth is referenced to FSL (2370'FSL)	North Substation: 00000000
Horizontal Depth is referenced to FSL (2370'FSL)	Scale: True Distance
2370'FSL (2370'FSL) is Mean Sea Level (2370'FSL)	Depth is in feet
Mean Sea Level is based on the 2370'FSL DRAKE 5X-HNB-11-07-67 (2370'FSL & 1758'FEL SEC.12) Well	Created by: mmp/ps/ps/2018-04-08
Coordinates are in feet referenced to FSL	Database: N/A DENVER





# Planned Wellpath Report

DRAKE 5X-HC-11-07-67 REV-A.0 PWP

Page 1 of 10



## REFERENCE WELLPATH IDENTIFICATION

Operator	NICKEL ROAD OPERATING	Slot	SLOT#03 DRAKE 5X-HC-11-07-67 (2369'FSL & 1708'FEL SEC.12)
Area	COLORADO	Well	DRAKE 5X-HC-11-07-67
Field	WELD COUNTY (NAD83/GRID NORTH)	Wellbore	DRAKE 5X-HC-11-07-67 PWB
Facility	SEC.12-07N-R67W		

## REPORT SETUP INFORMATION

Projection System	NAD83 / Lambert Colorado SP, Northern Zone (501), US feet	Software System	WellArchitect® 5.1
North Reference	Grid	User	Wagnjam
Scale	0.999974	Report Generated	1/28/2019 at 8:22:49 PM
Convergence at slot	0.43° East	Database/Source file	WA DENVER/DRAKE_5X-HC-11-07-67_REV-A.0_PWP.xml

## WELLPATH LOCATION

	Local coordinates		Grid coordinates		Geographic coordinates	
	North[ft]	East[ft]	Easting[US ft]	Northing[US ft]	Latitude	Longitude
Slot Location	0.00	0.00	3183871.85	1457749.61	40°35'16.933"N	104°50'16.656"W
Facility Reference Pt			3183871.85	1457749.61	40°35'16.933"N	104°50'16.656"W
Field Reference Pt			3183871.85	1457749.61	40°35'16.933"N	104°50'16.656"W

## WELLPATH DATUM

Calculation method	Minimum curvature	RIG (16') (RKB) to Facility Vertical Datum	5104.00ft
Horizontal Reference Pt	Slot	RIG (16') (RKB) to Mean Sea Level	5104.00ft
Vertical Reference Pt	RIG (16') (RKB)	RIG (16') (RKB) to Ground Level at Slot (SLOT#03 DRAKE 5X-HC-11-07-67 (2369'FSL & 1708'FEL SEC.12))	5104.00ft
MD Reference Pt	RIG (16') (RKB)	Section Origin	N 0.00, E 0.00 ft
Field Vertical Reference	Mean Sea Level	Section Azimuth	270.28°



# Planned Wellpath Report

DRAKE 5X-HC-11-07-67 REV-A.0 PWP

Page 2 of 10



REFERENCE WELLPATH IDENTIFICATION			
Operator	NICKEL ROAD OPERATING	Slot	SLOT#03 DRAKE 5X-HC-11-07-67 (2369'FSL & 1708'FEL SEC.12)
Area	COLORADO	Well	DRAKE 5X-HC-11-07-67
Field	WELD COUNTY (NAD83/GRID NORTH)	Wellbore	DRAKE 5X-HC-11-07-67 PWB
Facility	SEC.12-07N-R67W		

WELLPATH DATA (187 stations) † = interpolated/extrapolated station								
MD [ft]	Inclination [°]	Azimuth [°]	TVD [ft]	Vert Sect [ft]	North [ft]	East [ft]	DLS [°/100ft]	Comments
0.00†	0.000	84.791	0.00	0.00	0.00	0.00	0.00	
16.00	0.000	84.791	16.00	0.00	0.00	0.00	0.00	Tie On
116.00†	0.000	84.791	116.00	0.00	0.00	0.00	0.00	
216.00†	0.000	84.791	216.00	0.00	0.00	0.00	0.00	
316.00†	0.000	84.791	316.00	0.00	0.00	0.00	0.00	
416.00†	0.000	84.791	416.00	0.00	0.00	0.00	0.00	
516.00†	0.000	84.791	516.00	0.00	0.00	0.00	0.00	
616.00†	0.000	84.791	616.00	0.00	0.00	0.00	0.00	
716.00†	0.000	84.791	716.00	0.00	0.00	0.00	0.00	
816.00†	0.000	84.791	816.00	0.00	0.00	0.00	0.00	
916.00†	0.000	84.791	916.00	0.00	0.00	0.00	0.00	
1016.00†	0.000	84.791	1016.00	0.00	0.00	0.00	0.00	
1116.00†	0.000	84.791	1116.00	0.00	0.00	0.00	0.00	
1216.00†	0.000	84.791	1216.00	0.00	0.00	0.00	0.00	
1316.00†	0.000	84.791	1316.00	0.00	0.00	0.00	0.00	
1416.00†	0.000	84.791	1416.00	0.00	0.00	0.00	0.00	
1516.00†	0.000	84.791	1516.00	0.00	0.00	0.00	0.00	
1600.00	0.000	84.791	1600.00	0.00	0.00	0.00	0.00	End of Tangent
1616.00†	0.320	84.791	1616.00	-0.04	0.00	0.04	2.00	
1716.00†	2.320	84.791	1715.97	-2.34	0.21	2.34	2.00	
1816.00†	4.320	84.791	1815.80	-8.10	0.74	8.11	2.00	
1916.00†	6.320	84.791	1915.36	-17.33	1.58	17.34	2.00	
2016.00†	8.320	84.791	2014.54	-30.01	2.74	30.03	2.00	
2116.00†	10.320	84.791	2113.21	-46.13	4.21	46.15	2.00	
2216.00†	12.320	84.791	2211.26	-65.67	5.99	65.70	2.00	
2316.00†	14.320	84.791	2308.57	-88.60	8.08	88.64	2.00	
2416.00†	16.320	84.791	2405.01	-114.90	10.48	114.95	2.00	
2516.00†	18.320	84.791	2500.47	-144.53	13.18	144.60	2.00	
2567.04	19.341	84.791	2548.78	-160.93	14.68	161.01	2.00	End of Build
2616.00†	19.341	84.791	2594.98	-177.07	16.15	177.15	0.00	



# Planned Wellpath Report

DRAKE 5X-HC-11-07-67 REV-A.0 PWP

Page 3 of 10



REFERENCE WELLPATH IDENTIFICATION			
Operator	NICKEL ROAD OPERATING	Slot	SLOT#03 DRAKE 5X-HC-11-07-67 (2369'FSL & 1708'FEL SEC.12)
Area	COLORADO	Well	DRAKE 5X-HC-11-07-67
Field	WELD COUNTY (NAD83/GRID NORTH)	Wellbore	DRAKE 5X-HC-11-07-67 PWB
Facility	SEC.12-07N-R67W		

WELLPATH DATA (187 stations) † = interpolated/extrapolated station								
MD [ft]	Inclination [°]	Azimuth [°]	TVD [ft]	Vert Sect [ft]	North [ft]	East [ft]	DLS [°/100ft]	Comments
2716.00†	19.341	84.791	2689.33	-210.04	19.16	210.14	0.00	
2816.00†	19.341	84.791	2783.69	-243.01	22.16	243.12	0.00	
2916.00†	19.341	84.791	2878.05	-275.97	25.17	276.10	0.00	
3016.00†	19.341	84.791	2972.40	-308.94	28.18	309.08	0.00	
3116.00†	19.341	84.791	3066.76	-341.91	31.18	342.06	0.00	
3216.00†	19.341	84.791	3161.11	-374.87	34.19	375.05	0.00	
3316.00†	19.341	84.791	3255.47	-407.84	37.20	408.03	0.00	
3416.00†	19.341	84.791	3349.83	-440.81	40.20	441.01	0.00	
3516.00†	19.341	84.791	3444.18	-473.78	43.21	473.99	0.00	
3616.00†	19.341	84.791	3538.54	-506.74	46.22	506.97	0.00	
3716.00†	19.341	84.791	3632.90	-539.71	49.22	539.96	0.00	
3816.00†	19.341	84.791	3727.25	-572.68	52.23	572.94	0.00	
3916.00†	19.341	84.791	3821.61	-605.64	55.24	605.92	0.00	
4016.00†	19.341	84.791	3915.97	-638.61	58.24	638.90	0.00	
4116.00†	19.341	84.791	4010.32	-671.58	61.25	671.88	0.00	
4216.00†	19.341	84.791	4104.68	-704.54	64.26	704.87	0.00	
4316.00†	19.341	84.791	4199.04	-737.51	67.26	737.85	0.00	
4416.00†	19.341	84.791	4293.39	-770.48	70.27	770.83	0.00	
4516.00†	19.341	84.791	4387.75	-803.44	73.28	803.81	0.00	
4616.00†	19.341	84.791	4482.11	-836.41	76.28	836.79	0.00	
4716.00†	19.341	84.791	4576.46	-869.38	79.29	869.78	0.00	
4816.00†	19.341	84.791	4670.82	-902.35	82.30	902.76	0.00	
4916.00†	19.341	84.791	4765.18	-935.31	85.30	935.74	0.00	
5016.00†	19.341	84.791	4859.53	-968.28	88.31	968.72	0.00	
5116.00†	19.341	84.791	4953.89	-1001.25	91.32	1001.70	0.00	
5216.00†	19.341	84.791	5048.24	-1034.21	94.32	1034.69	0.00	
5316.00†	19.341	84.791	5142.60	-1067.18	97.33	1067.67	0.00	
5416.00†	19.341	84.791	5236.96	-1100.15	100.34	1100.65	0.00	
5516.00†	19.341	84.791	5331.31	-1133.11	103.34	1133.63	0.00	
5616.00†	19.341	84.791	5425.67	-1166.08	106.35	1166.61	0.00	



# Planned Wellpath Report

DRAKE 5X-HC-11-07-67 REV-A.0 PWP

Page 4 of 10



REFERENCE WELLPATH IDENTIFICATION			
Operator	NICKEL ROAD OPERATING	Slot	SLOT#03 DRAKE 5X-HC-11-07-67 (2369'FSL & 1708'FEL SEC.12)
Area	COLORADO	Well	DRAKE 5X-HC-11-07-67
Field	WELD COUNTY (NAD83/GRID NORTH)	Wellbore	DRAKE 5X-HC-11-07-67 PWB
Facility	SEC.12-07N-R67W		

WELLPATH DATA (187 stations) † = interpolated/extrapolated station								
MD [ft]	Inclination [°]	Azimuth [°]	TVD [ft]	Vert Sect [ft]	North [ft]	East [ft]	DLS [°/100ft]	Comments
5716.00†	19.341	84.791	5520.03	-1199.05	109.36	1199.60	0.00	
5816.00†	19.341	84.791	5614.38	-1232.01	112.36	1232.58	0.00	
5916.00†	19.341	84.791	5708.74	-1264.98	115.37	1265.56	0.00	
6016.00†	19.341	84.791	5803.10	-1297.95	118.38	1298.54	0.00	
6116.00†	19.341	84.791	5897.45	-1330.92	121.38	1331.52	0.00	
6216.00†	19.341	84.791	5991.81	-1363.88	124.39	1364.51	0.00	
6316.00†	19.341	84.791	6086.17	-1396.85	127.40	1397.49	0.00	
6416.00†	19.341	84.791	6180.52	-1429.82	130.40	1430.47	0.00	
6516.00†	19.341	84.791	6274.88	-1462.78	133.41	1463.45	0.00	
6616.00†	19.341	84.791	6369.24	-1495.75	136.42	1496.43	0.00	
6716.00†	19.341	84.791	6463.59	-1528.72	139.42	1529.42	0.00	
6816.00†	19.341	84.791	6557.95	-1561.68	142.43	1562.40	0.00	
6916.00†	19.341	84.791	6652.31	-1594.65	145.44	1595.38	0.00	
7016.00†	19.341	84.791	6746.66	-1627.62	148.44	1628.36	0.00	
7096.04	19.341	84.791	6822.18	-1654.00	150.85	1654.76	0.00	End of Tangent
7116.00†	17.352	84.226	6841.13	-1660.25	151.45	1661.01	10.00	
7216.00†	7.454	77.007	6938.68	-1681.45	154.41	1682.23	10.00	
7316.00†	3.157	299.883	7038.43	-1685.38	157.25	1686.17	10.00	
7416.00†	12.819	276.439	7137.36	-1671.92	159.87	1672.72	10.00	
7516.00†	22.773	273.194	7232.46	-1641.49	162.20	1642.30	10.00	
7616.00†	32.755	271.864	7320.84	-1595.00	164.17	1595.82	10.00	
7716.00†	42.744	271.105	7399.81	-1533.87	165.70	1534.69	10.00	
7816.00†	52.737	270.589	7466.97	-1459.95	166.77	1460.79	10.00	
7916.00†	62.731	270.196	7520.29	-1375.50	167.33	1376.34	10.00	
8016.00†	72.727	269.867	7558.14	-1283.08	167.37	1283.92	10.00	
8116.00†	82.723	269.573	7579.37	-1185.50	166.89	1186.33	10.00	
8216.00†	92.719	269.292	7583.35	-1085.71	165.90	1086.54	10.00	
8236.58	94.776	269.234	7582.00†	-1065.18	165.64	1066.00	10.00	End of 3D Arc
8316.00†	94.776	269.234	7575.39	-986.05	164.58	986.87	0.00	
8416.00†	94.776	269.234	7567.06	-886.41	163.25	887.22	0.00	



# Planned Wellpath Report

DRAKE 5X-HC-11-07-67 REV-A.0 PWP

Page 5 of 10



REFERENCE WELLPATH IDENTIFICATION			
Operator	NICKEL ROAD OPERATING	Slot	SLOT#03 DRAKE 5X-HC-11-07-67 (2369'FSL & 1708'FEL SEC.12)
Area	COLORADO	Well	DRAKE 5X-HC-11-07-67
Field	WELD COUNTY (NAD83/GRID NORTH)	Wellbore	DRAKE 5X-HC-11-07-67 PWB
Facility	SEC.12-07N-R67W		

WELLPATH DATA (187 stations) † = interpolated/extrapolated station								
MD [ft]	Inclination [°]	Azimuth [°]	TVD [ft]	Vert Sect [ft]	North [ft]	East [ft]	DLS [°/100ft]	Comments
8516.00†	94.776	269.234	7558.73	-786.78	161.92	787.58	0.00	
8616.00†	94.776	269.234	7550.41	-687.14	160.59	687.94	0.00	
8716.00†	94.776	269.234	7542.08	-587.51	159.25	588.29	0.00	
8816.00†	94.776	269.234	7533.76	-487.87	157.92	488.65	0.00	
8916.00†	94.776	269.234	7525.43	-388.23	156.59	389.00	0.00	
9016.00†	94.776	269.234	7517.10	-288.60	155.26	289.36	0.00	
9116.00†	94.776	269.234	7508.78	-188.96	153.93	189.72	0.00	
9216.00†	94.776	269.234	7500.45	-89.33	152.60	90.07	0.00	
9316.00†	94.776	269.234	7492.12	10.31	151.26	-9.57	0.00	
9416.00†	94.776	269.234	7483.80	109.95	149.93	-109.22	0.00	
9516.00†	94.776	269.234	7475.47	209.58	148.60	-208.86	0.00	
9616.00†	94.776	269.234	7467.14	309.22	147.27	-308.50	0.00	
9716.00†	94.776	269.234	7458.82	408.86	145.94	-408.15	0.00	
9816.00†	94.776	269.234	7450.49	508.49	144.60	-507.79	0.00	
9916.00†	94.776	269.234	7442.16	608.13	143.27	-607.43	0.00	
10016.00†	94.776	269.234	7433.84	707.76	141.94	-707.08	0.00	
10116.00†	94.776	269.234	7425.51	807.40	140.61	-806.72	0.00	
10216.00†	94.776	269.234	7417.18	907.04	139.28	-906.37	0.00	
10316.00†	94.776	269.234	7408.86	1006.67	137.95	-1006.01	0.00	
10416.00†	94.776	269.234	7400.53	1106.31	136.61	-1105.65	0.00	
10516.00†	94.776	269.234	7392.20	1205.94	135.28	-1205.30	0.00	
10616.00†	94.776	269.234	7383.88	1305.58	133.95	-1304.94	0.00	
10716.00†	94.776	269.234	7375.55	1405.22	132.62	-1404.59	0.00	
10816.00†	94.776	269.234	7367.23	1504.85	131.29	-1504.23	0.00	
10916.00†	94.776	269.234	7358.90	1604.49	129.95	-1603.87	0.00	
11016.00†	94.776	269.234	7350.57	1704.13	128.62	-1703.52	0.00	
11116.00†	94.776	269.234	7342.25	1803.76	127.29	-1803.16	0.00	
11216.00†	94.776	269.234	7333.92	1903.40	125.96	-1902.80	0.00	
11316.00†	94.776	269.234	7325.59	2003.03	124.63	-2002.45	0.00	
11416.00†	94.776	269.234	7317.27	2102.67	123.30	-2102.09	0.00	





# Planned Wellpath Report

DRAKE 5X-HC-11-07-67 REV-A.0 PWP

Page 6 of 10



REFERENCE WELLPATH IDENTIFICATION			
Operator	NICKEL ROAD OPERATING	Slot	SLOT#03 DRAKE 5X-HC-11-07-67 (2369'FSL & 1708'FEL SEC.12)
Area	COLORADO	Well	DRAKE 5X-HC-11-07-67
Field	WELD COUNTY (NAD83/GRID NORTH)	Wellbore	DRAKE 5X-HC-11-07-67 PWB
Facility	SEC.12-07N-R67W		

WELLPATH DATA (187 stations) † = interpolated/extrapolated station								Comments
MD [ft]	Inclination [°]	Azimuth [°]	TVD [ft]	Vert Sect [ft]	North [ft]	East [ft]	DLS [°/100ft]	
11516.00†	94.776	269.234	7308.94	2202.31	121.96	-2201.74	0.00	
11616.00†	94.776	269.234	7300.61	2301.94	120.63	-2301.38	0.00	
11716.00†	94.776	269.234	7292.29	2401.58	119.30	-2401.02	0.00	
11816.00†	94.776	269.234	7283.96	2501.21	117.97	-2500.67	0.00	
11916.00†	94.776	269.234	7275.63	2600.85	116.64	-2600.31	0.00	
12016.00†	94.776	269.234	7267.31	2700.49	115.30	-2699.96	0.00	
12116.00†	94.776	269.234	7258.98	2800.12	113.97	-2799.60	0.00	
12216.00†	94.776	269.234	7250.65	2899.76	112.64	-2899.24	0.00	
12264.10	94.776	269.234	7246.65	2947.68	112.00	-2947.17	0.00	End of Tangent
12316.00†	93.738	269.241	7242.80	2999.43	111.31	-2998.92	2.00	
12416.00†	91.738	269.253	7238.02	3099.30	110.00	-3098.80	2.00	
12421.39	91.630	269.254	7237.86	3104.69	109.93	-3104.19	2.00	End of 3D Arc
12516.00†	91.630	269.254	7235.17	3199.24	108.70	-3198.75	0.00	
12616.00†	91.630	269.254	7232.32	3299.18	107.40	-3298.70	0.00	
12716.00†	91.630	269.254	7229.48	3399.13	106.10	-3398.65	0.00	
12816.00†	91.630	269.254	7226.63	3499.07	104.79	-3498.60	0.00	
12916.00†	91.630	269.254	7223.79	3599.01	103.49	-3598.55	0.00	
13016.00†	91.630	269.254	7220.94	3698.96	102.19	-3698.50	0.00	
13116.00†	91.630	269.254	7218.10	3798.90	100.89	-3798.45	0.00	
13216.00†	91.630	269.254	7215.25	3898.84	99.59	-3898.40	0.00	
13316.00†	91.630	269.254	7212.41	3998.79	98.29	-3998.35	0.00	
13416.00†	91.630	269.254	7209.56	4098.73	96.99	-4098.31	0.00	
13516.00†	91.630	269.254	7206.72	4198.67	95.69	-4198.26	0.00	
13616.00†	91.630	269.254	7203.87	4298.62	94.38	-4298.21	0.00	
13716.00†	91.630	269.254	7201.03	4398.56	93.08	-4398.16	0.00	
13816.00†	91.630	269.254	7198.18	4498.50	91.78	-4498.11	0.00	
13916.00†	91.630	269.254	7195.34	4598.45	90.48	-4598.06	0.00	
14016.00†	91.630	269.254	7192.49	4698.39	89.18	-4698.01	0.00	
14116.00†	91.630	269.254	7189.65	4798.34	87.88	-4797.96	0.00	
14216.00†	91.630	269.254	7186.80	4898.28	86.58	-4897.91	0.00	



# Planned Wellpath Report

DRAKE 5X-HC-11-07-67 REV-A.0 PWP

Page 7 of 10



REFERENCE WELLPATH IDENTIFICATION			
Operator	NICKEL ROAD OPERATING	Slot	SLOT#03 DRAKE 5X-HC-11-07-67 (2369'FSL & 1708'FEL SEC.12)
Area	COLORADO	Well	DRAKE 5X-HC-11-07-67
Field	WELD COUNTY (NAD83/GRID NORTH)	Wellbore	DRAKE 5X-HC-11-07-67 PWB
Facility	SEC.12-07N-R67W		

WELLPATH DATA (187 stations) † = interpolated/extrapolated station								
MD [ft]	Inclination [°]	Azimuth [°]	TVD [ft]	Vert Sect [ft]	North [ft]	East [ft]	DLS [°/100ft]	Comments
14316.00†	91.630	269.254	7183.96	4998.22	85.28	-4997.87	0.00	
14416.00†	91.630	269.254	7181.11	5098.17	83.98	-5097.82	0.00	
14516.00†	91.630	269.254	7178.26	5198.11	82.67	-5197.77	0.00	
14616.00†	91.630	269.254	7175.42	5298.05	81.37	-5297.72	0.00	
14716.00†	91.630	269.254	7172.57	5398.00	80.07	-5397.67	0.00	
14816.00†	91.630	269.254	7169.73	5497.94	78.77	-5497.62	0.00	
14916.00†	91.630	269.254	7166.88	5597.88	77.47	-5597.57	0.00	
15016.00†	91.630	269.254	7164.04	5697.83	76.17	-5697.52	0.00	
15116.00†	91.630	269.254	7161.19	5797.77	74.87	-5797.47	0.00	
15216.00†	91.630	269.254	7158.35	5897.71	73.57	-5897.42	0.00	
15316.00†	91.630	269.254	7155.50	5997.66	72.26	-5997.38	0.00	
15416.00†	91.630	269.254	7152.66	6097.60	70.96	-6097.33	0.00	
15516.00†	91.630	269.254	7149.81	6197.54	69.66	-6197.28	0.00	
15616.00†	91.630	269.254	7146.97	6297.49	68.36	-6297.23	0.00	
15716.00†	91.630	269.254	7144.12	6397.43	67.06	-6397.18	0.00	
15720.63	91.630	269.254	7143.99	6402.06	67.00	-6401.81	0.00	End of Tangent
15816.00†	89.723	269.243	7142.86	6497.40	65.75	-6497.16	2.00	
15833.01	89.383	269.241	7143.00	6514.41	65.52	-6514.16	2.00	End of 3D Arc
15916.00†	89.383	269.241	7143.89	6597.38	64.42	-6597.14	0.00	
16016.00†	89.383	269.241	7144.97	6697.36	63.10	-6697.13	0.00	
16116.00†	89.383	269.241	7146.04	6797.34	61.78	-6797.11	0.00	
16216.00†	89.383	269.241	7147.12	6897.31	60.45	-6897.10	0.00	
16316.00†	89.383	269.241	7148.20	6997.29	59.13	-6997.09	0.00	
16416.00†	89.383	269.241	7149.27	7097.27	57.80	-7097.07	0.00	
16516.00†	89.383	269.241	7150.35	7197.25	56.48	-7197.06	0.00	
16616.00†	89.383	269.241	7151.43	7297.22	55.15	-7297.04	0.00	
16716.00†	89.383	269.241	7152.51	7397.20	53.83	-7397.03	0.00	
16816.00†	89.383	269.241	7153.58	7497.18	52.50	-7497.01	0.00	
16916.00†	89.383	269.241	7154.66	7597.16	51.18	-7597.00	0.00	
17016.00†	89.383	269.241	7155.74	7697.14	49.85	-7696.98	0.00	



# Planned Wellpath Report

DRAKE 5X-HC-11-07-67 REV-A.0 PWP

Page 8 of 10



REFERENCE WELLPATH IDENTIFICATION			
Operator	NICKEL ROAD OPERATING	Slot	SLOT#03 DRAKE 5X-HC-11-07-67 (2369'FSL & 1708'FEL SEC.12)
Area	COLORADO	Well	DRAKE 5X-HC-11-07-67
Field	WELD COUNTY (NAD83/GRID NORTH)	Wellbore	DRAKE 5X-HC-11-07-67 PWB
Facility	SEC.12-07N-R67W		

WELLPATH DATA (187 stations) † = interpolated/extrapolated station								
MD [ft]	Inclination [°]	Azimuth [°]	TVD [ft]	Vert Sect [ft]	North [ft]	East [ft]	DLS [°/100ft]	Comments
17116.00†	89.383	269.241	7156.81	7797.11	48.53	-7796.97	0.00	
17216.00†	89.383	269.241	7157.89	7897.09	47.20	-7896.95	0.00	
17316.00†	89.383	269.241	7158.97	7997.07	45.88	-7996.94	0.00	
17416.00†	89.383	269.241	7160.04	8097.05	44.55	-8096.93	0.00	
17516.00†	89.383	269.241	7161.12	8197.02	43.23	-8196.91	0.00	
17616.00†	89.383	269.241	7162.20	8297.00	41.90	-8296.90	0.00	
17690.56	89.383	269.241	7163.00 <sup>2</sup>	8371.55	40.91	-8371.45	0.00	End of Tangent

HOLE & CASING SECTIONS - Ref Wellbore: DRAKE 5X-HC-11-07-67 PWB      Ref Wellpath: DRAKE 5X-HC-11-07-67 REV-A.0 PWP									
String/Diameter	Start MD [ft]	End MD [ft]	Interval [ft]	Start TVD [ft]	End TVD [ft]	Start N/S [ft]	Start E/W [ft]	End N/S [ft]	End E/W [ft]
9.625in Casing Surface	16.00	1500.00	1484.00	16.00	1500.00	0.00	0.00	0.00	0.00