



Bonanza Creek Energy

Wetco Farms K21-4-9MRLNC

API # 05-123-47805

Production

11/15/2018

Quote #: 21339

Execution #: 13033



Bonanza Creek Energy

Attention: Mr. Adam Conry | (303) 883.3351 | AConry@bonanzacrk.com

Bonanza Creek Energy | 410 17th St Suite 1400 | Denver, CO. 80202

Dear Mr. Adam Conry,

Thank you for the opportunity to provide cementing services on this well. BJ Services strives to achieve complete customer satisfaction. If you have any questions regarding the services or data provided, please contact BJ Services at any time.

Sincerely,
Gage Putnam
Field Engineer I | (307) 887-4243 | Gage.Putnam@bjservices.com

Field Office 1716 East Allison Rd., Cheyenne WY, 82007
Phone: (307) 638-5585

Sales Office 999 18th St. Suite 1200 Denver, CO 80202
Phone: (281) 408-2361

Cementing Treatment



Start Date	11/15/2018	Field Ticket#	FT-13033-Q5Y1Q60202-1344014774
End Date	11/15/2018	Well	WETCO FARMS K21-4-9MRLNC
Client	Bonanza Creek Energy	API#	05-123-47805
Service Sup.	Roger Acuna	County	WELD
District	Cheyenne, WY	State/Province	CO
Type of Job	Long String	Rig	Akita 520
Execution ID	EXC-13033-Q5Y1Q602	Project ID	PRJ1012599

WELL GEOMETRY

Type	ID (in)	OD (in)	Wt. (lb/ft)	MD (ft)	TVD (ft)	Excess(%)
Previous Casing	8.92	9.63	36.00	1,610.00	1,610.00	
Open Hole	8.50	0.00	0.00	14,219.00	6,357.00	12.50
Casing	4.89	5.50	17.00	14,209.00	6,357.00	

Shoe Length (ft): 45.00

HARDWARE

Top Plug Used?	Yes	Tool Depth (ft)	14,164.00
Top Plug Provided By	Non BJ	Max Casing Pressure - Rated (psi)	7,460.00
Top Plug Size	5.500	Max Casing Pressure - Operated (psi)	3,200.00
Centralizers Used	Yes	Pipe Movement	None
Centralizers Quantity	153.00	Job Pumped Through	Manifold
Centralizers Type	Rigid	Top Connection Thread	LTC
Landing Collar Depth (ft)	14,164	Top Connection Size	5.5
Tool Type	Float Collar		

CIRCULATION PRIOR TO JOB

Well Circulated By	Rig	YP Mud In	7
Circulation Prior to Job	Yes	YP Mud Out	7
Circulation Time (min)	180.00	Solids Present at End of Circulation	No
Circulation Rate (bpm)	8.00	10 sec SGS	6.00
Circulation Volume (bbls)	1,440.00	10 min SGS	8.00
Lost Circulation Prior to Cement Job	No	30 min SGS	10.00
Mud Density In (ppg)	9.50	Flare Prior to/during the Cement Job	Yes
Mud Density Out (ppg)	9.50	Gas Present	Yes
PV Mud In	7	Gas Units	3500
PV Mud Out	7		

Cementing Treatment



TEMPERATURE

Ambient Temperature (°F)	45.00	Slurry Cement Temperature (°F)	50.00
Mix Water Temperature (°F)	50.00	Flow Line Temperature (°F)	140.00

BJ FLUID DETAILS

Fluid Type	Fluid Name	Density (ppg)	Yield (Cu Ft/sk)	H2O Req. (gals/sk)	Planned Top of Fluid (Ft)	Length (Ft)	Vol (sk)	Vol (Cu Ft)	Vol (bbls)
Spacer / Pre Flush / Flush	IntegraGuard EZ Spacer	12.0000			0.00				60.0000
Lead Slurry	BJCem P100.3.01C	12.5000	2.1538	12.23	0.00	5000	610	1,307.0000	232.7000
Tail Slurry	BJCem P50.6.02C	13.5000	1.4772	7.45	5,000.00	9194.84	1607	2,376.0000	423.0000
Displacement 2	Retarded Water	8.3337			13,244.00	0	0	0.0000	20.0000
Displacement Final	Displacement Final (Water)	8.3308			0.00			0.0000	309.1000

Cementing Treatment



Fluid Type	Fluid Name	Component	Concentration	UOM
Spacer / Pre Flush / Flush	IntegraGuard EZ Spacer	RETARDER, R-7C	2.0000	PPB
Spacer / Pre Flush / Flush	IntegraGuard EZ Spacer	IntegraGuard GW-86	1.2000	PPB
Spacer / Pre Flush / Flush	IntegraGuard EZ Spacer	WEIGHTING ADDITIVE, W-11	243.3100	PPB
Spacer / Pre Flush / Flush	IntegraGuard EZ Spacer	SPACER SURFACTANT, SS-267	1.0000	GPB
Spacer / Pre Flush / Flush	IntegraGuard EZ Spacer	RETARDER, R-31	0.5000	GPB
Lead Slurry	BJCem P100.3.01C	BONDING AGENT, BA-60	0.4000	BWOB
Lead Slurry	BJCem P100.3.01C	IntegraGuard GW-86	0.2000	BWOB
Lead Slurry	BJCem P100.3.01C	IntegraSeal POLI	0.1300	LBS/SK
Lead Slurry	BJCem P100.3.01C	CEMENT, ASTM TYPE III	100.0000	PCT
Lead Slurry	BJCem P100.3.01C	EXTENDER, BENTONITE	4.0000	BWOB
Lead Slurry	BJCem P100.3.01C	RETARDER, SR-20	0.4000	BWOB
Lead Slurry	BJCem P100.3.01C	FLUID LOSS, FL-24	0.3000	BWOB
Lead Slurry	BJCem P100.3.01C	FOAM PREVENTER, FP-25	0.3000	BWOB
Tail Slurry	BJCem P50.6.02C	Flyash (Rockies)	50.0000	PCT
Tail Slurry	BJCem P50.6.02C	FLUID LOSS, FL-66	0.2000	BWOB
Tail Slurry	BJCem P50.6.02C	CEMENT, CLASS G	50.0000	PCT
Tail Slurry	BJCem P50.6.02C	RETARDER, SR-20	0.0700	BWOB
Tail Slurry	BJCem P50.6.02C	EXTENDER, BENTONITE	2.0000	BWOB
Tail Slurry	BJCem P50.6.02C	FOAM PREVENTER, FP-25	0.3000	BWOB
Tail Slurry	BJCem P50.6.02C	IntegraGuard GW-86	0.1000	BWOB
Displacement 2	Retarded Water	RETARDER, R-8L	0.5000	GPB
Displacement 2	Retarded Water	BIOCIDE, BIOC11139W	0.0100	GPB
Displacement Final	Displacement Final (Water)	BIOCIDE, BIOC11139W	0.0100	GPB

DISPLACEMENT AND END OF JOB SUMMARY

Displaced By	BJ Services	Amount of Cement Returned/Reversed	80.00
Calculated Displacement Volume (bbls)	329.00	Method Used to Verify Returns	Visual
Actual Displacement Volume (bbls)	329.00	Amount of Spacer to Surface	60.00
Did Float Hold?	Yes	Pressure Left on Casing (psi)	0.00
Bump Plug	Yes	Amount Bled Back After Job	4.00
Bump Plug Pressure (psi)	3,200.00	Total Volume Pumped (bbls)	1,048.00
Were Returns Planned at Surface	Yes	Top Out Cement Spotted	No
Cement returns During Job	Full	Lost Circulation During Cement Job	No

EVENT LOG



Customer Name: Bonanza Creek Energy

Well Name: WETCO FARMS K21-4-9MRLNC

Job Type: Long String

Quote ID: QUO-21339-X2T3W8

Plan ID: ORD-13033-Q5Y1Q6

District: Cheyenne, WY

Execution ID: EXC-13033-Q5Y1Q602

BJ Supervisor: Roger Acuna

Seq.	Start Dt./Time	Event	Density (ppg)	Pump Rate (bpm)	Pump Vol (bbls)	Pipe Pressure (psi)	Comments
1	11/15/2018 10:00	Callout					CALLED OUT RTS 1600
2	11/15/2018 11:30	Depart for Location					DEPART CHEYNNNE WY CAMP
3	11/15/2018 14:00	Arrive on Location					ARRIVE TO LOCATION
4	11/15/2018 14:00	STEACS Briefing					STEACS RIG UP
5	11/15/2018 14:15	Rig Up					RIG UP IRON AND HOSES
6	11/15/2018 15:15	Client	9.5000	8.00	1,440.00	600.00	WAITING ON RIG TO FINISH RUNNING CASING AND CIRCULATE WELL
7	11/15/2018 18:15	STEACS Briefing					PRE JOB SAFETY MEETING TO DISCUSS JOB PROCEDURES
8	11/15/2018 18:32	Pump Spacer	8.3300	3.00	3.00	100.00	FILL LINES FRESH WATER
9	11/15/2018 18:35	Pressure Test				6,000.00	TEST LINES
10	11/15/2018 18:40	Pump Spacer	11.0000	6.00	20.00	400.00	PUMP 20BBLS INTEGRAGUARD EZ SPACER II @ 11PPG W/SURFACTANT
11	11/15/2018 18:44	Pump Spacer	12.0000	6.00	20.00	400.00	PUMP 20BBLS INTEGRAGUARD EZ SPACER II @ 12PPG W/SURFACTANT
12	11/15/2018 18:48	Pump Spacer	11.0000	6.00	20.00	400.00	PUMP 20BBLS INTEGRAGUARD EZ SPACER II @ 11PPG W/SURFACTANT
13	11/15/2018 18:52	Pump Lead Cement	12.5000	7.00	233.00	350.00	PUMP 233BBLS BJCEM P100.3.01C @ 12.5PPG (610SKS 2.15YLD 12.23GPS) CALCULATED TO SURFACE
14	11/15/2018 19:24	Pump Tail Cement	13.5000	7.00	423.00	300.00	PUMP 423BBLS BJCEMP50.6.02C @ 13.5PPG (1607SKS 1.48YLD 7.45GPS) CALCULATED TOP CEMENT 3866'
15	11/15/2018 20:27	End Pumping					SHUTDOWN WASH PUMPS AND LINES TO THE PIT
16	11/15/2018 20:29	Drop Top Plug					DROP TOP PLUG
17	11/15/2018 20:34	Pump Displacement	8.4000	8.00	310.00	2,500.00	PUMP FRESH WATER DISPLACEMENT W/BIOCIDE

EVENT LOG



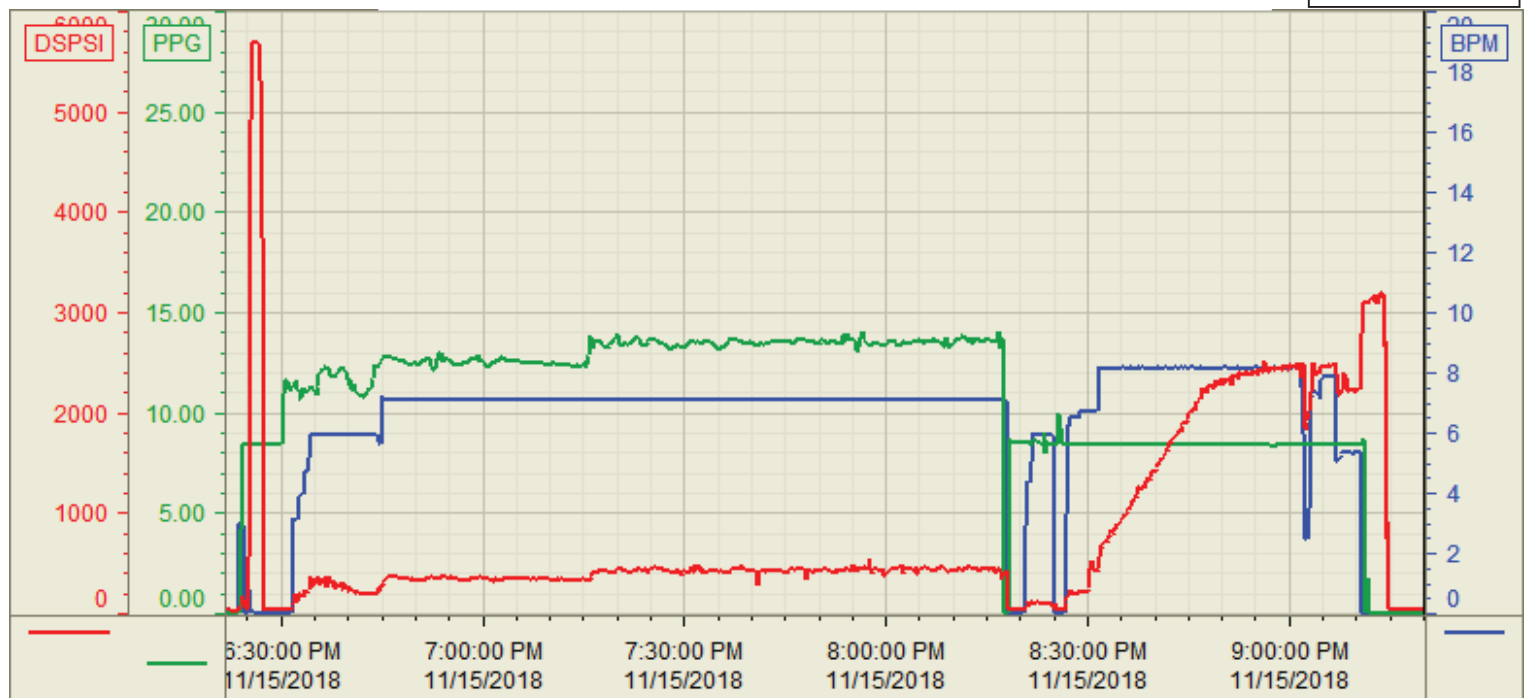
18	11/15/2018 21:00	Spacer Back-to-Surface					SPACER TO SURFACE @ 190BBLS INTO DISPLACEMENT
19	11/15/2018 21:07	Cement Back-to-Surface					CEMENT TO SURFACE @ 250BBLS INTO DISPLACEMENT
20	11/15/2018 21:16	Pump Displacement	8.4000	5.00	19.00	2,200.00	SLOW RATE TO LAND PLUG
21	11/15/2018 21:19	Land Plug				3,200.00	LAND PLUG 1000PSI OVER FINAL CIRCULATING PRESSURE
22	11/15/2018 21:22	Check Floats					CHECK FLOATS, FLOATS HELD GETTING BBLS BACK TO THE PUMP
23	11/15/2018 21:23	STEACS Briefing					STEACS RIG DOWN
24	11/15/2018 21:30	Rig Down					RIG DOWN IRON AND HOSES
25	11/15/2018 22:00	Leave Location					DEPART LOCATION

Customer: Bonanza Creek
Well Number: K21-4-9MRLNC
Lease Info: Wetco Farms



Print Date/Time

11/15/2018 9:50:10 PM



	Name	Y value	X value/time stamp	Tag name Y
1	DS - Press(Psi)	43.5 i.	11/15/2018 9:20:00 PM i.	CementorDS_DISCHARGE_PRESS_DIAL
2	Recirc - Density (PPG)	0.01 i.	11/15/2018 9:20:00 PM i.	CementorDENSITY_ACTUAL_RATE
3	Combined rate (BPM)	0.00 i.	11/15/2018 9:20:00 PM i.	CementorFlow_Combined
4				
5				

Source: Control1 9:50:05 PM