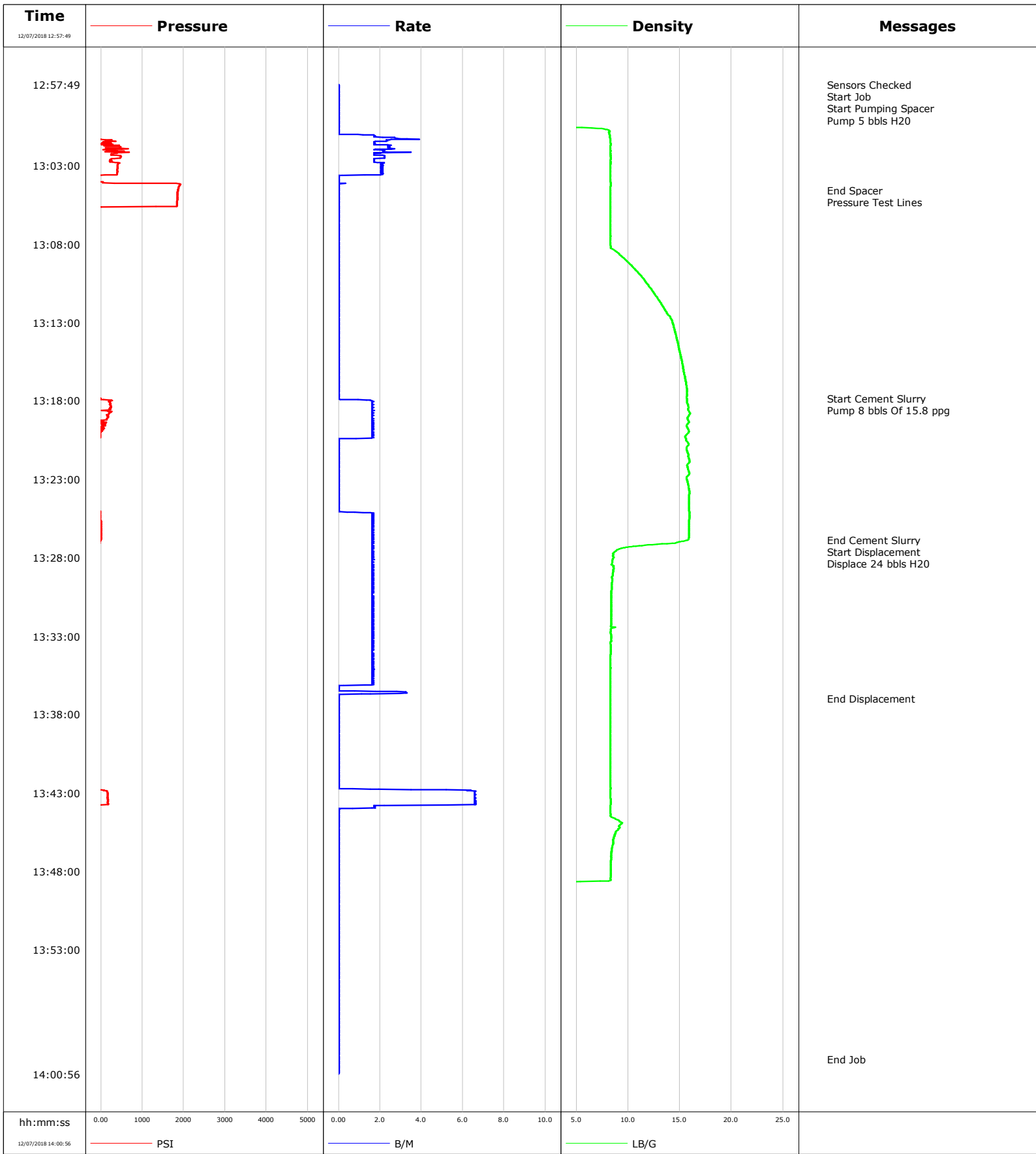


Well	Mayer 4-15	Client	Anadarko
Field	DJ	SIR No.	2881745
Engineer	Justin Zika	Job Type	Nio
Country	United States	Job Date	12-07-2018



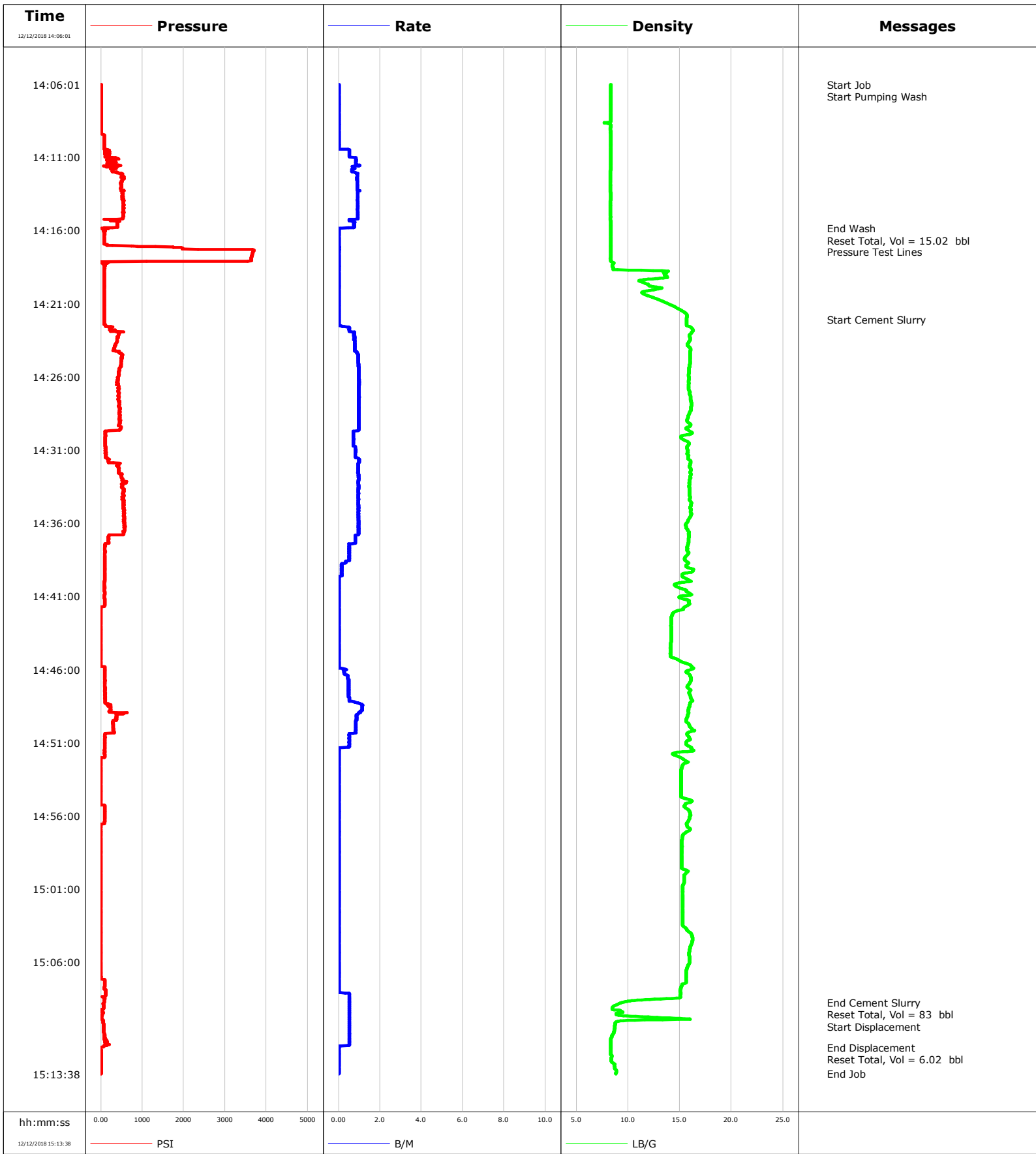
				Customer Anadarko			Job Number 2881745							
Well Mayer 4-15		Location (legal)			Schlumberger Location			Job Start Dec/07/2018						
Field DJ		Formation Name/Type		Deviation deg	Bit Size in		Well MD ft	Well TVD ft						
County Weld		State/Province Colorado		BHP psi	BHST degF	BHCT degF	Pore Press. Gradient lb/gal							
Well Master 630538397		API/UWI 512321744												
Rig Name SPN 710		Drilled For Oil	Service Via Land		Casing/Liner									
					Depth, ft	Size, in	Weight, lb/ft	Grade	Thread					
Offshore Zone		Well Class Old	Well Type Workover											
Drilling Fluid Type		Max. Density lb/gal	Plastic Viscosity cP		Tubing/Drill Pipe									
					T/D	Depth, ft	Size, in	Weight, lb/ft	Grade	Thread				
Service Line Cementing		Job Type Nio		T						6765.0	2.4	4.7	J55	8RD
										0.0	0.0	0.0		
Max. Allowed Tub. Press psi		Max. Allowed Ann. Press psi		WH Connection 2 3/8" 4.7# T/S		Perforations/Open Hole								
						Top, ft	Bottom, ft	shot/ft	No. of Shots	Total Interval ft				
Service Instructions Sensors Checked Pump 5 bbls H2O Psi Test Pump 8 bbls Of 15.8 ppg @30 sks @1.53 Y Mix H2O 6.35 gal/sk Displace 24 bbls H2O Estimated TOC 6249' Bottom Plug 6765'						ft	ft			Diameter in				
						ft	ft							
						Treat Down Tubing	Displacement 24.0 bbl	Packer Type	Packer Depth ft					
						Tubing Vol. bbl	Casing Vol. bbl	Annular Vol. bbl	Openhole Vol. bbl					
Casing/Tubing Secured <input checked="" type="checkbox"/>		1 Hole Vol. Circulated prior to Cement <input checked="" type="checkbox"/>		Casing Tools				Squeeze Job						
Lift Pressure psi				Shoe Type				Squeeze Type						
Pipe Rotated <input type="checkbox"/>		Pipe Reciprocated <input type="checkbox"/>		Shoe Depth ft				Tool Type						
No. Centralizers		Top Plugs		Bottom Plugs		Stage Tool Type				Tool Depth ft				
Cement Head Type						Stage Tool Depth ft				Tail Pipe Size in				
Job Scheduled For Dec/07/2018		Arrived on Location Dec/07/2018		Leave Location Dec/07/2018		Collar Type				Tail Pipe Depth ft				
						Collar Depth ft				Sqz. Total Vol. bbl				
Date	Time 24-hr clock	Treating Pressure PSI	Flow Rate B/M	Density LB/G	Volume BBL	Message								
12/07/2018	12:57:49	-115	0.0	0.10	0.0	Started Acquisition								
12/07/2018	12:57:50	-115	0.0	0.10	0.0	Sensors Checked								
12/07/2018	12:57:52	-115	0.0	0.10	0.0	Start Job								
12/07/2018	12:57:57	-115	0.0	0.10	0.0	Start Pumping Spacer								
12/07/2018	13:02:50	461	2.2	8.31	3.8									
12/07/2018	13:04:35	1858	0.0	8.30	5.4	End Spacer								
12/07/2018	13:04:37	1858	0.0	8.30	5.4	Pressure Test Lines								
12/07/2018	13:12:52	-115	0.0	14.23	5.4									
12/07/2018	13:17:49	-19	0.0	15.67	5.4	Start Cement Slurry								
12/07/2018	13:17:53	-15	0.0	15.68	5.4									
12/07/2018	13:22:54	-125	0.0	15.65	9.4									
12/07/2018	13:26:52	-1	1.6	15.82	12.3	End Cement Slurry								
12/07/2018	13:27:55	-56	1.6	8.55	14.0									
12/07/2018	13:32:56	-83	1.6	8.35	22.2									
12/07/2018	13:36:59	-56	0.0	8.30	27.9	End Displacement								
12/07/2018	13:37:57	-120	0.0	8.30	27.9									
12/07/2018	13:42:58	164	6.6	8.28	29.1									
12/07/2018	13:47:59	-111	0.0	8.32	34.8									
12/07/2018	13:53:00	-111	0.0	0.10	34.8									
12/07/2018	13:58:01	-111	0.0	0.10	34.8									

Well Mayer 4-15	Field DJ	Job Start Dec/07/2018	Customer Anadarko	Job Number 2881745
---------------------------	--------------------	---------------------------------	-----------------------------	------------------------------

Post Job Summary

Average Pump Rates, bbl/min					Volume of Fluid Injected, bbl			
Slurry 2.0	N2	Mud	Maximum Rate 6.6	Total Slurry 34.8	Mud 0.0	Spacer 5.4	N2	
Treating Pressure Summary, psi					Breakdown Fluid			
Maximum 1917	Final -111	Average 502	Bump Plug to	Breakdown	Type	Volume bbl	Density lb/gal	
Avg. N2 Percent %	Designed Slurry Volume 8.0 bbl	Displacement 0.0 bbl	Mix Water Temp 55 degF	Cement Circulated to Surface? <input type="checkbox"/>	Volume bbl			
				Washed Thru Perfs <input type="checkbox"/>	To ft			
Customer or Authorized Representative Al Morales			Schlumberger Supervisor Justin Zika		Circulation Lost <input type="checkbox"/>	Job Completed <input checked="" type="checkbox"/>		
					-	-		

Well	MAYER-4-15	Client	ANADARKO PETROLEUM
Field	DJ	SIR No.	2883851
Engineer	LUIS JIMENEZ	Job Type	STUB PLUG 1
Country	United States	Job Date	12-12-2018



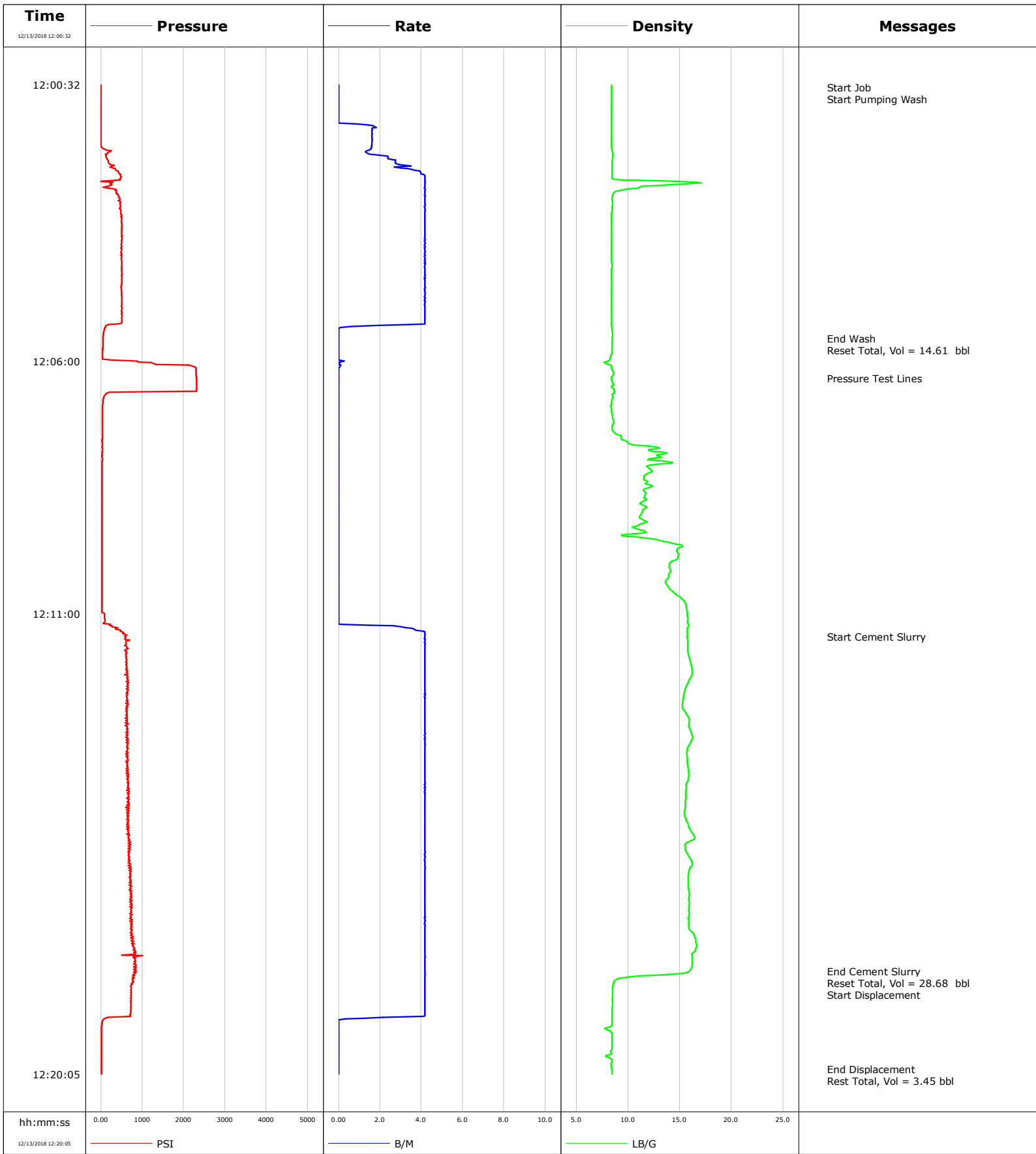
				Customer ANADARKO PETROLEUM			Job Number 2883851		
Well MAYER-4-15		Location (legal) WELD			Schlumberger Location CHEYENNE			Job Start Dec/12/2018	
Field DJ		Formation Name/Type		Deviation deg	Bit Size in		Well MD 2600.0 ft	Well TVD 2600.0 ft	
County WELD		State/Province Colorado		BHP psi	BHST degF	BHCT degF	Pore Press. Gradient lb/gal		
Well Master		API/UWI							
Rig Name SPN# 710	Drilled For Oil & Gas	Service Via Land	Casing/Liner						
			Depth, ft	Size, in	Weight, lb/ft	Grade	Thread		
Offshore Zone N/A	Well Class Old	Well Type Workover	2500.0	4.5	11.6	N80	N/A		
			0.0	0.0	0.0				
Drilling Fluid Type		Max. Density lb/gal	Plastic Viscosity cP		Tubing/Drill Pipe				
Service Line Cementing	Job Type STUB PLUG 1		T/D	Depth, ft	Size, in	Weight, lb/ft	Grade	Thread	
			T	2600.0	2.4	4.7	J55	N/A	
				0.0	0.0	0.0			
Max. Allowed Tub. Press psi	Max. Allowed Ann. Press psi	WH Connection 2 3/8" 4.7# T/S		Perforations/Open Hole					
				Top, ft	Bottom, ft	shot/ft	No. of Shots	Total Interval ft	
				ft	ft				
				ft	ft			Diameter in	
				Treat Down Tubing	Displacement 6.0 bbl	Packer Type	Packer Depth ft		
				Tubing Vol. 83.0 bbl	Casing Vol. bbl	Annular Vol. bbl	Openhole Vol. bbl		
Casing/Tubing Secured <input checked="" type="checkbox"/>	1 Hole Vol. Circulated prior to Cement <input checked="" type="checkbox"/>			Casing Tools			Squeeze Job		
Lift Pressure psi			Shoe Type			Squeeze Type			
Pipe Rotated <input type="checkbox"/>	Pipe Reciprocated <input type="checkbox"/>		Shoe Depth ft			Tool Type			
No. Centralizers	Top Plugs	Bottom Plugs	Stage Tool Type			Tool Depth ft			
Cement Head Type			Stage Tool Depth ft			Tail Pipe Size in			
Job Scheduled For Dec/12/2018	Arrived on Location Dec/12/2018	Leave Location Dec/12/2018	Collar Type			Tail Pipe Depth ft			
			Collar Depth ft			Sqz. Total Vol. bbl			
Date	Time 24-hr clock	Treating Pressure PSI	Flow Rate B/M	Density LB/G	Volume BBL	Message			
12/12/2018	14:06:01	5	0.0	8.31	0.0	Start Job			
12/12/2018	14:06:04	9	0.0	8.31	0.0	Start Pumping Wash			
12/12/2018	14:15:51	64	0.1	8.31	15.0	End Wash			
12/12/2018	14:15:52	14	0.0	8.31	15.0	Reset Total, Vol = 15.02 bbl			
12/12/2018	14:16:31	82	0.0	8.31	15.1	Pressure Test Lines			
12/12/2018	14:22:04	78	0.0	15.65	15.1	Start Cement Slurry			
12/12/2018	15:08:46	73	0.5	9.39	94.6	End Cement Slurry			
12/12/2018	15:08:47	73	0.5	9.31	94.7	Reset Total, Vol = 83 bbl			
12/12/2018	15:08:48	64	0.5	9.25	94.7	Start Displacement			
12/12/2018	15:11:50	-5	0.0	8.31	100.8	End Displacement			
12/12/2018	15:11:51	-5	0.0	8.31	100.8	Reset Total, Vol = 6.02 bbl			

Well MAYER-4-15	Field DJ	Job Start Dec/12/2018	Customer ANADARKO PETROLEUM	Job Number 2883851
---------------------------	--------------------	---------------------------------	---------------------------------------	------------------------------

Post Job Summary

Average Pump Rates, bbl/min					Volume of Fluid Injected, bbl			
Slurry 2.5	N2	Mud	Maximum Rate 3.1	Total Slurry 83.0	Mud 0.0	Spacer 15.0	N2	
Treating Pressure Summary, psi					Breakdown Fluid			
Maximum 3694	Final 5	Average 286	Bump Plug to	Breakdown	Type	Volume bbl	Density lb/gal	
Avg. N2 Percent %	Designed Slurry Volume 83.0 bbl	Displacement 6.0 bbl	Mix Water Temp 50 degF	Cement Circulated to Surface? <input type="checkbox"/>	Volume bbl			
				Washed Thru Perfs <input type="checkbox"/>	To ft			
Customer or Authorized Representative AL MORALES			Schlumberger Supervisor LUIS JIMENEZ		Circulation Lost <input type="checkbox"/>	Job Completed <input checked="" type="checkbox"/>		
					-	-		

Well	Mayer 4-15	Client	Anadarko
Field	DJ	SIR No.	CFA0-01201
Engineer	R Pippin	Job Type	Stub Plug 2
Country	United States	Job Date	12-13-2018



				Customer		Job Number			
				Anadarko		CFA0-01201			
Well		Location (legal)		Schlumberger Location		Job Start			
Mayer 4-15				Cheyenne		Dec/13/2018			
Field		Formation Name/Type		Deviation	Bit Size	Well MD	Well TVD		
DJ				deg	in	1345.0 ft	1345.0 ft		
County		State/Province		BHP	BHST	BHCT	Pore Press. Gradient		
				psi	degF	degF	lb/gal		
Well Master		API/UWI							
Rig Name	Drilled For	Service Via	Casing/Liner						
	Gas	Land	Depth, ft	Size, in	Weight, lb/ft	Grade	Thread		
Offshore Zone	Well Class	Well Type	634.0	8.6	24.0	j55	8rd		
	Old	Workover	0.0	0.0	0.0				
Drilling Fluid Type		Max. Density	Plastic Viscosity	Tubing/Drill Pipe					
		lb/gal	cP	T/D	Depth, ft	Size, in	Weight, lb/ft	Grade	Thread
Service Line	Job Type			T	1345.0	2.4	4.7	j55	EUE
Cementing	Stub Plug 2				0.0	0.0	0.0		
Max. Allowed Tub. Press	Max. Allowed Ann. Press	WH Connection	Perforations/Open Hole						
psi	psi	2 3/8" 4.7# T/S	Top, ft	Bottom, ft	shot/ft	No. of Shots	Total Interval		
			ft	ft			ft		
			ft	ft			Diameter		
			ft	ft			in		
Service Instructions		130 sks 1.16 ft3/sk 5.129 gps 26.9 bbls @ 15.8 ppg	Treat Down	Displacement	Packer Type	Packer Depth			
15 bbls CW		26.9 bbls CMT @ 15.8 ppg	Tubing	3.5 bbl		ft			
3.5 bbls Displacement			Tubing Vol.	Casing Vol.	Annular Vol.	Openhole Vol.			
			5.2 bbl	bbl	bbl	bbl			
Casing/Tubing Secured <input checked="" type="checkbox"/>		1 Hole Vol. Circulated prior to Cement <input checked="" type="checkbox"/>		Casing Tools		Squeeze Job			
Lift Pressure		psi		Shoe Type		Squeeze Type			
Pipe Rotated <input type="checkbox"/>		Pipe Reciprocated <input type="checkbox"/>		Shoe Depth		ft			
No. Centralizers		Top Plugs	Bottom Plugs	Stage Tool Type		Tool Depth			
						ft			
Cement Head Type				Stage Tool Depth		ft			
Job Scheduled For		Arrived on Location	Leave Location	Collar Type		Tail Pipe Depth			
Dec/13/2018		Dec/13/2018	Dec/13/2018			ft			
				Collar Depth		ft			
						Sqz. Total Vol.			
						bbl			
Date	Time 24-hr clock	Treating Pressure PSI	Flow Rate B/M	Density LB/G	Volume BBL	Message			
12/13/2018	12:00:32	0	0.0	8.44	0.0	Water Test Complete			
12/13/2018	12:00:35	0	0.0	8.44	0.0	Start Job			
12/13/2018	12:00:38	0	0.0	8.44	0.0	Start Pumping Wash			
12/13/2018	12:05:33	55	0.0	8.49	14.6	End Wash			
12/13/2018	12:05:35	55	0.0	8.49	14.6	Reset Total, Vol = 14.61 bbl			
12/13/2018	12:06:20	2312	0.0	8.35	14.6	Pressure Test Lines			
12/13/2018	12:10:34	32	0.0	14.38	14.6				
12/13/2018	12:11:26	577	4.2	15.75	15.4	Start Cement Slurry			
12/13/2018	12:15:35	664	4.2	15.52	32.7				
12/13/2018	12:18:03	851	4.2	15.92	43.0	End Cement Slurry			
12/13/2018	12:18:07	787	4.2	13.96	43.3	Reset Total, Vol = 28.68 bbl			
12/13/2018	12:18:13	783	4.2	8.91	43.7	Start Displacement			
12/13/2018	12:19:59	14	0.0	8.44	46.9	End Displacement			

Well Mayer 4-15	Field DJ	Job Start Dec/13/2018	Customer Anadarko	Job Number CFA0-01201
---------------------------	--------------------	---------------------------------	-----------------------------	---------------------------------

Post Job Summary

Average Pump Rates, bbl/min					Volume of Fluid Injected, bbl			
Slurry 3.9	N2	Mud	Maximum Rate 4.2	Total Slurry 26.9	Mud 0.0	Spacer 15.0	N2	
Treating Pressure Summary, psi					Breakdown Fluid			
Maximum 2312	Final 14	Average 450	Bump Plug to	Breakdown	Type	Volume bbl	Density lb/gal	
Avg. N2 Percent %	Designed Slurry Volume 26.9 bbl	Displacement 3.5 bbl	Mix Water Temp 56 degF	Cement Circulated to Surface? <input type="checkbox"/>	Volume bbl			
				Washed Thru Perfs <input type="checkbox"/>	To ft			
Customer or Authorized Representative Al Morales			Schlumberger Supervisor R Pippin		Circulation Lost <input type="checkbox"/>	Job Completed <input checked="" type="checkbox"/>		
					-	-		



Job Summary

Ticket Number	Ticket Date
TN# BCO- 1812-0087	12/14/2018

COUNTY	COMPANY	API Number
Weld	ANADARKO PETROLEUM CORPORATION	05-123-21744
WELL NAME	RIG	JOB TYPE
Mayer 4-15	SPN 710	Plug to Abandon
SURFACE WELL LOCATION	CJES Field Supervisor	CUSTOMER REP
40.231646 104.884694	Brian Douglass	Al Morales

EMPLOYEES		
Joel Apodaca		
Anthony Field		

WELL PROFILE

Max Treating Pressure (psi):	Bottom Hole Static Temperature (°F):
Bottom Hole Circulating Temperature (°F):	Well Type:

Open Hole

1	Size (in)	TMD From (ft)	TMD to (ft)	TVD From (Ft)	TVD to (Ft)
	7.88	634	910		
2	Size (in)	TMD From (ft)	TMD to (ft)	TVD From (Ft)	TVD to (Ft)

Casing/Tubing/Drill Pipe

Type	Size (in)	Weight (lb/ft)	Grade	TMD From (ft)	TMD to (ft)	TVD From (Ft)	TVD to (Ft)
Surface	8.625	24	J55	0	634		
Tubing	2.375	4.7	J55	0	910		

CEMENT DATA

Stage 1: From Depth (ft): 155 To Depth (ft): 910
 Type: **Shoe Plug**
 Volume (sacks): 230 Volume (bbls): 47.1

Cement & Additives:	Density (ppg)	Yield (ft³/sk)	Water Req.
100%CJ914	15.8	1.15	5.00

Stage 2: From Depth (ft): To Depth (ft):
 Type:
 Volume (sacks): Volume (bbls):

Cement & Additives:	Density (ppg)	Yield (ft³/sk)	Water Req.
---------------------	---------------	----------------	------------

Stage 3: From Depth (ft): To Depth (ft):
 Type:
 Volume (sacks): Volume (bbls):

Cement & Additives:	Density (ppg)	Yield (ft³/sk)	Water Req.
---------------------	---------------	----------------	------------

Stage 4: From Depth (ft): To Depth (ft):
 Type:
 Volume (sacks): Volume (bbls):

Cement & Additives:	Density (ppg)	Yield (ft³/sk)	Water Req.
---------------------	---------------	----------------	------------

SUMMARY

Preflushes:	10 bbls of SAPP	Calculated Displacement (bbl):	0.6	Stage 1	
	5 bbls of Fresh Water	Actual Displacement (bbl):	0.5	Stage 2	
	bbls of				
Total Preflush/Spacer Volume (bbl):	15	Plug Bump (Y/N):	n/a	Bump Pressure (psi):	n/a
Total Slurry Volume (bbl):	47.1	Lost Returns (Y/N):	n	(if Y, when)	
Total Fluid Pumped	62.6				
Returns to Surface:	Mud	1 bbls			

Job Notes (fluids pumped / procedures / tools / etc.):

Pumped job per program and customers request!

Thank You For Using
 CJES O-TEX Cementing

Customer Representative Signature:



Client ANADARKO PETROLEUM CORP
Ticket No. 87
Location NWNW SEC.15-T3N-R67W
Comments PLUG 1A

Client Rep MR. AL MORALES
Well Name MAYER 4-15
Job Type Abandonment Plugs

Supervisor BRIAN DOUGLASS
Unit No. 445052
Service District BRIGHTON, CO
Job Date 12/14/2018

