

Inspection Photos

1/31/2019

Operator: VERDAD RESOURCES LLC - 10651

Location ID: 424238

Inspection Doc. Number: 682504471

Weld County, CO

Aaron Trujillo
NE Reclamation Specialist
COGCC

Inspection Photos
Operator: VERDAD RESOURCES LLC - 10651
Location ID: 424238

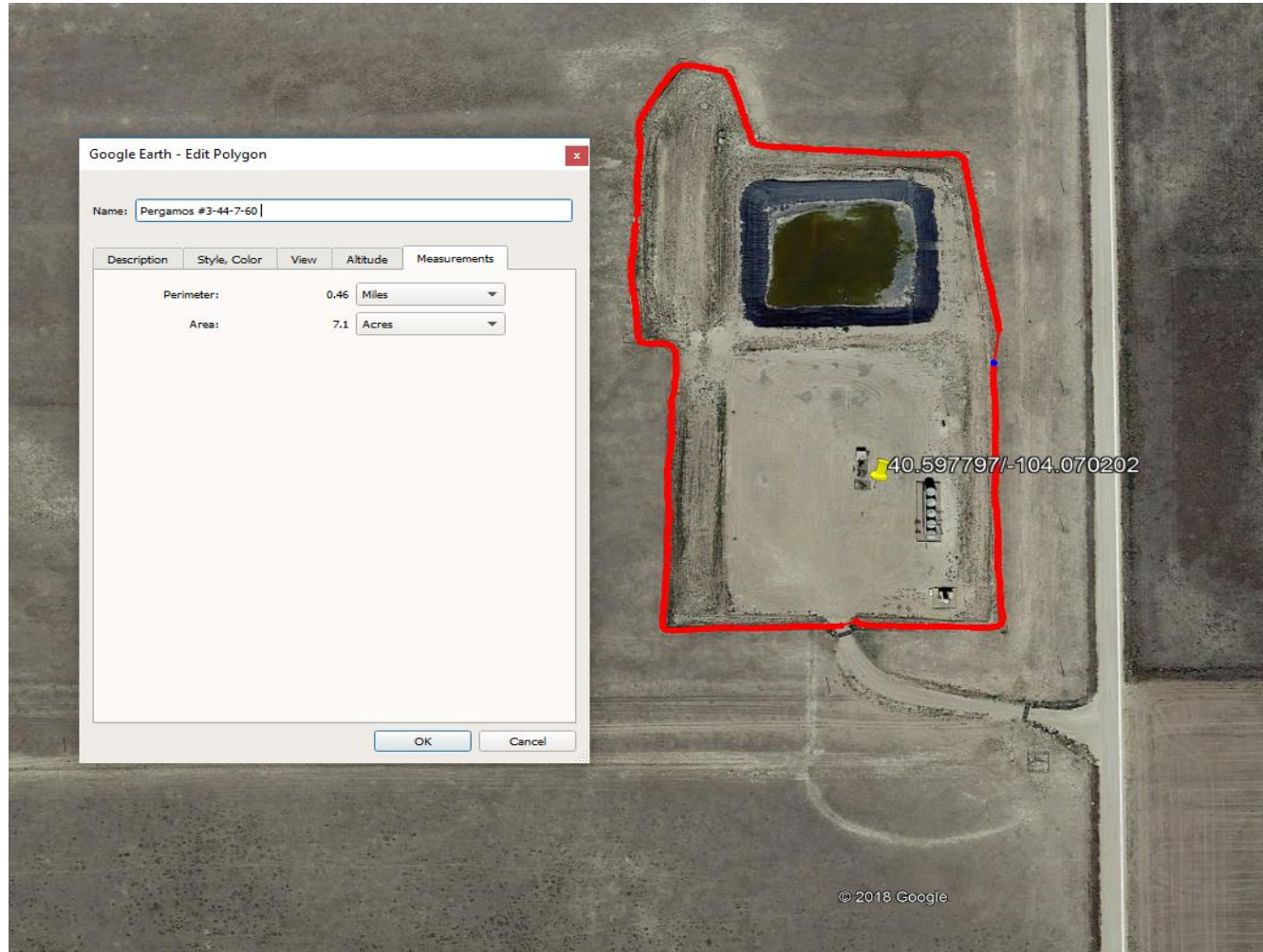


Photo 1: 2013 Google earth aerial imagery. Photo shows disturbance area for the location. A disturbance area of 7.1 acres was measured using a Trimble Juno 3B handheld device. This exceeds the permitted disturbance area of 5.8 acres. Note: operator submitted sundry doc. # 2613856 increasing area of pit by 0.25 acres, increasing permitted disturbance to ~6.05. Actual disturbance still exceeds permitted disturbance.



Photo 2: Photo taken from the north end of the pad, facing southwest. Photos 2-5 provides an overview of the location from west, southwest, southeast, to east. Photos also show interim reclamation has not been conducted in accordance with COGCC rule 1003.

Inspection Photos
Operator: VERDAD RESOURCES LLC - 10651
Location ID: 424238



Photo 3: See comments under photo 2.

Inspection Photos
Operator: VERDAD RESOURCES LLC - 10651
Location ID: 424238



Photo 4: See comments under photo 2.



COLORADO
Oil & Gas Conservation
Commission
Department of Natural Resources

Inspection Doc. Number: 682504471



Photo 5: See comments under photo 2



Photo 6: Photo taken from the south end of the pit #430101, facing northeast. Location received an approved 502.b variance to delay interim reclamation of the location for three (3) years until 12/03/2018. Photos 6-7 shows pit has not been closed/reclaimed.



Photo 7: Photo taken from the south end of the pit #430101, facing northwest. See comments under photo 6.



Photo 8: Photo taken from the soil stockpile on the northwest end of the location. Photo shows stormwater erosion degradation along slopes of soil stockpile.



Photo 9: Photo taken from the soil stockpile on the northwest end of the location, facing north. Photo shows stormwater erosion degradation along slopes of soil stockpile.