

Inspection Photos

1/31/2019

Operator: VERDAD RESOURCES LLC - 10651

Location ID: 425475

Inspection Doc. Number: 682504461

Weld County, CO

Aaron Trujillo
NE Reclamation Specialist
COGCC

Inspection Photos
Operator: VERDAD RESOURCES LLC - 10651
Location ID: 425475

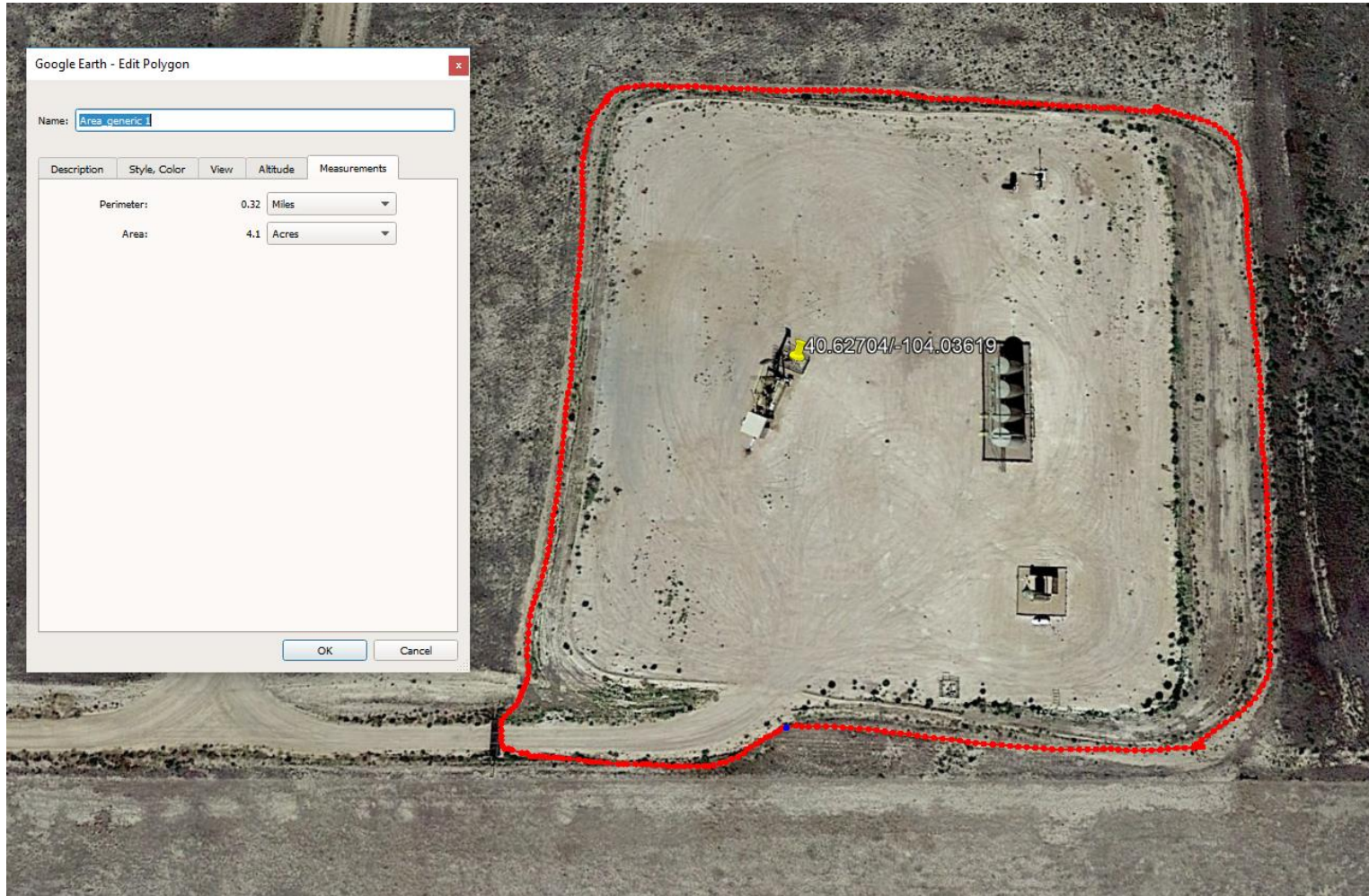


Photo 1: 2013 Google earth aerial imagery. Photo shows disturbance area for the location. A disturbance area of 4.1 acres was measured using a Trimble Juno 3B handheld device



Photo 2: Photo taken from the south end of the location, facing east. Photos 2- 5 provide and overview of the location from west, northwest, northeast to east. Photos also show interim reclamation has not been conducted in accordance with COGCC rule 1003.



Photo 3: See comments under photo 2.

Inspection Photos
Operator: VERDAD RESOURCES LLC - 10651
Location ID: 425475



Photo 4: See comments under photo 2.

Inspection Photos
Operator: VERDAD RESOURCES LLC - 10651
Location ID: 425475



Photo 5: See comments under photo 2.



01.31.2019

Photo 6: Photo taken from the northeast corner of the location, facing south. Photo shows interim reclamation has not been conducted in accordance with COGCC rule 1003



Photo 7: Photo taken from the northeast corner of the location, facing west. Photo shows interim reclamation has not been conducted in accordance with COGCC rule 1003



Photo 8: Photo taken from the northwest corner of the location, facing south. Photo shows interim reclamation has not been conducted in accordance with COGCC rule 1003

Inspection Photos
Operator: VERDAD RESOURCES LLC - 10651
Location ID: 425475



Photo 9: Photo taken from the southwest corner of the location, facing north. Photo shows interim reclamation has not been conducted in accordance with COGCC rule 1003

Inspection Photos
Operator: VERDAD RESOURCES LLC - 10651
Location ID: 425475



Photo 10: Photo taken from the southwest corner of the location, facing east. Photo shows interim reclamation has not been conducted in accordance with COGCC rule 1003



Photo 11: Photo taken from the access road on the south end of the location, facing southwest. Photo shows erosion degradation along access road due to stormwater runoff.