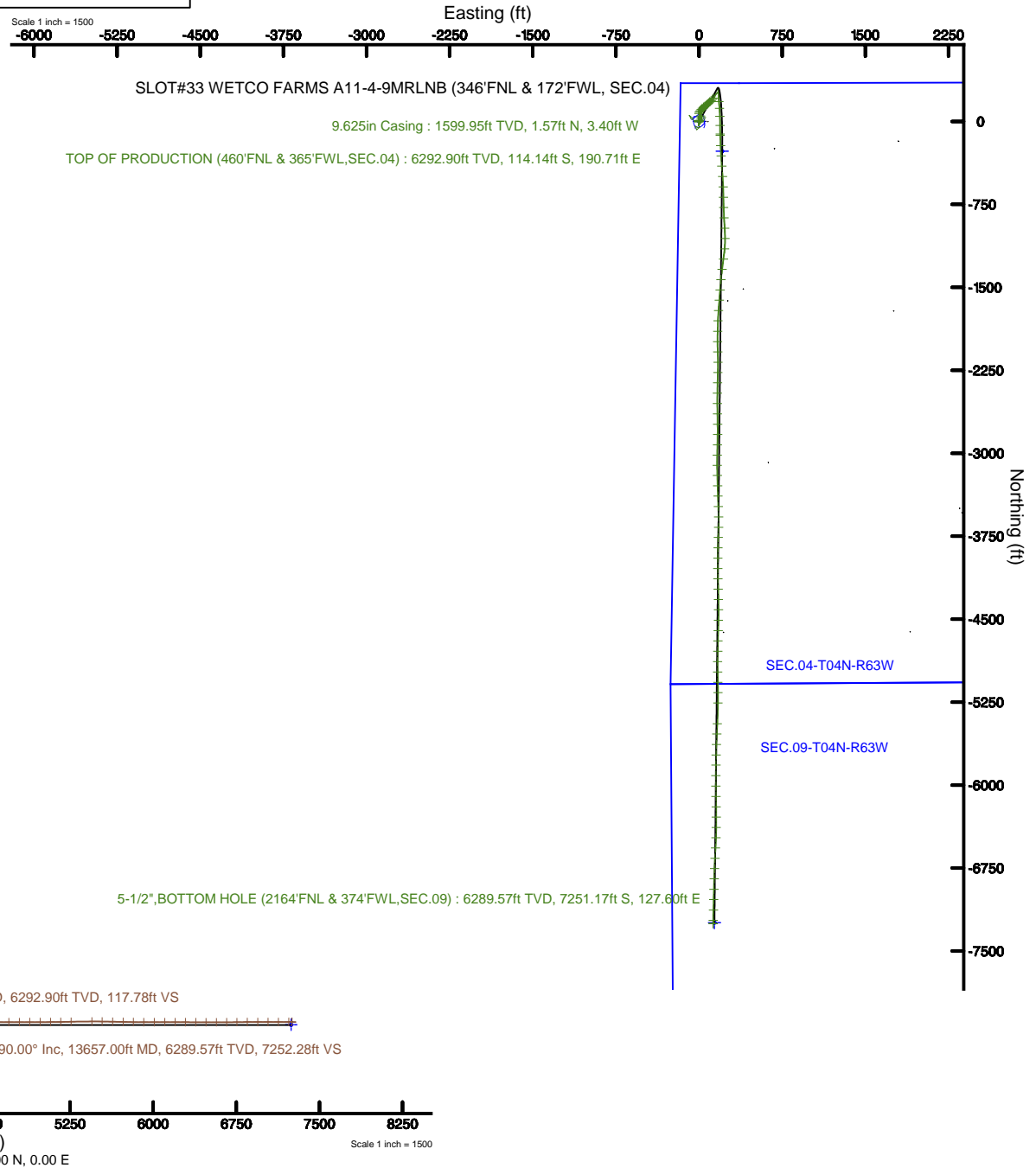


BONANZA CREEK OIL COMPANY

Location: COLORADO Slot: SLOT#33 WETCO FARMS A11-4-9MRLNB (346'FNL & 172'FWL, SEC.04)
Field: WELD COUNTY Well: WETCO FARMS A11-4-9MRLNB
Facility: SEC.04-T04N-R63W Wellbore: WETCO FARMS A11-4-9MRLNB PWB

Plot reference wellpath is WETCO FARMS A11-4-9MRLNB (REV-8.0) PWP	Grid System: NAD83 / Lambert Colorado SP, Northern Zone (501), US feet
True vertical depths are referenced to AKITA 520 (4570'GL+17'KB@4587') (RKB)	North Reference: True north
Measured depths are referenced to AKITA 520 (4570'GL+17'KB@4587') (RKB)	Scale: True distance
AKITA 520 (4570'GL+17'KB@4587') (RKB) to Mean Sea Level: 4587 feet	Depths are in feet
Mean Sea Level to Ground level (At Slot: SLOT#33 WETCO FARMS A11-4-9MRLNB (346'FNL & 172'FWL, SEC.04)): 0 feet	Created by: bushjamh on 2019-01-24
Coordinates are in feet referenced to Slot	Database: Denver





Actual Wellpath Report

WETCO FARMS A11-4-9MRLNB AWP

Page 1 of 9



REFERENCE WELLPATH IDENTIFICATION			
Operator	BONANZA CREEK OIL COMPANY	Slot	SLOT#33 WETCO FARMS A11-4-9MRLNB (346'FNL & 172'FWL, SEC.04)
Area	COLORADO	Well	WETCO FARMS A11-4-9MRLNB
Field	WELD COUNTY	Wellbore	WETCO FARMS A11-4-9MRLNB AWB
Facility	SEC.04-T04N-R63W		

REPORT SETUP INFORMATION			
Projection System	NAD83 / Lambert Colorado SP, Northern Zone (501), US feet	Software System	WellArchitect® 5.1
North Reference	True	User	Bushjamh
Scale	0.999958	Report Generated	1/24/2019 at 6:04:51 PM
Convergence at slot	0.68° East	Database/Source file	Denver/WETCO_FARMS_A11-4-9MRLNB_AWP.xml

WELLPATH LOCATION						
	Local coordinates		Grid coordinates		Geographic coordinates	
	North[ft]	East[ft]	Easting[US ft]	Northing[US ft]	Latitude	Longitude
Slot Location	-73.61	-1.66	3292186.51	1371249.85	40°20'51.868"N	104°27'06.044"W
Facility Reference Pt			3292187.30	1371323.47	40°20'52.595"N	104°27'06.023"W
Field Reference Pt			3224525.77	1254425.87	40°01'44.400"N	104°41'53.556"W

WELLPATH DATUM			
Calculation method	Minimum curvature	AKITA 520 (4570'GL+17'KB@4587') (RKB) to Facility Vertical Datum	4587.00ft
Horizontal Reference Pt	Slot	AKITA 520 (4570'GL+17'KB@4587') (RKB) to Mean Sea Level	4587.00ft
Vertical Reference Pt	AKITA 520 (4570'GL+17'KB@4587') (RKB)	AKITA 520 (4570'GL+17'KB@4587') (RKB) to Ground Level at Slot (SLOT#33 WETCO FARMS A11-4-9MRLNB (346'FNL & 172'FWL, SEC.04))	4587.00ft
MD Reference Pt	AKITA 520 (4570'GL+17'KB@4587') (RKB)	Section Origin	N 0.00, E 0.00 ft
Field Vertical Reference	Mean Sea Level	Section Azimuth	178.90°



Actual Wellpath Report

WETCO FARMS A11-4-9MRLNB AWP

Page 2 of 9



REFERENCE WELLPATH IDENTIFICATION

Operator	BONANZA CREEK OIL COMPANY	Slot	SLOT#33 WETCO FARMS A11-4-9MRLNB (346'FNL & 172'FWL, SEC.04)
Area	COLORADO	Well	WETCO FARMS A11-4-9MRLNB
Field	WELD COUNTY	Wellbore	WETCO FARMS A11-4-9MRLNB AWB
Facility	SEC.04-T04N-R63W		

WELLPATH DATA (145 stations) † = interpolated/extrapolated station

MD [ft]	Inclination [°]	Azimuth [°]	TVD [ft]	Vert Sect [ft]	North [ft]	East [ft]	Latitude	Longitude	DLS [°/100ft]	Comments
0.00†	0.000	354.620	0.00	0.00	0.00	0.00	40°20'51.868"N	104°27'06.044"W	0.00	
17.00	0.000	354.620	17.00	0.00	0.00	0.00	40°20'51.868"N	104°27'06.044"W	0.00	
133.00	0.280	354.620	133.00	-0.28	0.28	-0.03	40°20'51.870"N	104°27'06.045"W	0.24	
225.00	0.370	328.780	225.00	-0.76	0.76	-0.20	40°20'51.875"N	104°27'06.047"W	0.18	
319.00	0.310	313.640	319.00	-1.21	1.20	-0.54	40°20'51.879"N	104°27'06.051"W	0.11	
413.00	0.580	350.150	412.99	-1.85	1.84	-0.81	40°20'51.886"N	104°27'06.055"W	0.40	
507.00	0.650	4.540	506.99	-2.86	2.84	-0.85	40°20'51.896"N	104°27'06.055"W	0.18	
601.00	0.440	36.120	600.98	-3.67	3.66	-0.59	40°20'51.904"N	104°27'06.052"W	0.38	
694.00	0.690	12.850	693.98	-4.50	4.50	-0.26	40°20'51.912"N	104°27'06.048"W	0.36	
788.00	0.680	20.050	787.97	-5.57	5.57	0.06	40°20'51.923"N	104°27'06.044"W	0.09	
882.00	0.220	193.800	881.97	-5.92	5.92	0.21	40°20'51.926"N	104°27'06.042"W	0.96	
976.00	0.470	205.400	975.97	-5.40	5.40	0.00	40°20'51.921"N	104°27'06.044"W	0.27	
1069.00	0.310	217.700	1068.97	-4.86	4.85	-0.32	40°20'51.916"N	104°27'06.049"W	0.19	
1163.00	0.430	213.920	1162.97	-4.37	4.36	-0.67	40°20'51.911"N	104°27'06.053"W	0.13	
1257.00	0.560	225.010	1256.96	-3.77	3.74	-1.19	40°20'51.905"N	104°27'06.060"W	0.17	
1351.00	0.440	220.890	1350.96	-3.18	3.15	-1.75	40°20'51.899"N	104°27'06.067"W	0.13	
1443.00	0.650	224.920	1442.95	-2.55	2.51	-2.35	40°20'51.892"N	104°27'06.075"W	0.23	
1556.00	0.480	229.920	1555.95	-1.81	1.75	-3.17	40°20'51.885"N	104°27'06.085"W	0.16	
1673.00	0.110	342.550	1672.95	-1.61	1.54	-3.58	40°20'51.883"N	104°27'06.091"W	0.45	
1858.00	0.040	136.270	1857.95	-1.73	1.66	-3.59	40°20'51.884"N	104°27'06.091"W	0.08	
1952.00	0.290	170.710	1951.95	-1.47	1.41	-3.52	40°20'51.881"N	104°27'06.090"W	0.27	
2045.00	0.240	138.480	2044.95	-1.09	1.03	-3.36	40°20'51.878"N	104°27'06.088"W	0.17	
2138.00	0.330	223.180	2137.94	-0.75	0.69	-3.41	40°20'51.874"N	104°27'06.088"W	0.42	
2325.00	0.250	309.930	2324.94	-0.63	0.56	-4.09	40°20'51.873"N	104°27'06.097"W	0.22	
2417.00	0.170	156.460	2416.94	-0.64	0.56	-4.19	40°20'51.873"N	104°27'06.099"W	0.44	
2511.00	0.110	187.360	2510.94	-0.42	0.34	-4.15	40°20'51.871"N	104°27'06.098"W	0.10	
2604.00	0.750	345.980	2603.94	-0.93	0.84	-4.31	40°20'51.876"N	104°27'06.100"W	0.92	
2697.00	1.020	278.260	2696.93	-1.65	1.55	-5.27	40°20'51.883"N	104°27'06.113"W	1.09	
2791.00	1.680	183.650	2790.91	-0.42	0.30	-6.19	40°20'51.871"N	104°27'06.124"W	2.16	
2884.00	1.910	105.030	2883.88	1.37	-1.46	-4.78	40°20'51.853"N	104°27'06.106"W	2.45	



Actual Wellpath Report

WETCO FARMS A11-4-9MRLNB AWP

Page 3 of 9



REFERENCE WELLPATH IDENTIFICATION

Operator	BONANZA CREEK OIL COMPANY	Slot	SLOT#33 WETCO FARMS A11-4-9MRLNB (346'FNL & 172'FWL, SEC.04)
Area	COLORADO	Well	WETCO FARMS A11-4-9MRLNB
Field	WELD COUNTY	Wellbore	WETCO FARMS A11-4-9MRLNB AWB
Facility	SEC.04-T04N-R63W		

WELLPATH DATA (145 stations)

MD [ft]	Inclination [°]	Azimuth [°]	TVD [ft]	Vert Sect [ft]	North [ft]	East [ft]	Latitude	Longitude	DLS [°/100ft]	Comments
2977.00	1.080	329.680	2976.86	1.04	-1.11	-3.72	40°20'51.857"N	104°27'06.093"W	2.99	
3071.00	0.990	171.790	3070.86	1.07	-1.15	-4.06	40°20'51.856"N	104°27'06.097"W	2.16	
3165.00	1.390	54.580	3164.85	1.23	-1.29	-3.01	40°20'51.855"N	104°27'06.083"W	2.17	
3258.00	1.050	321.420	3257.83	-0.08	0.03	-2.62	40°20'51.868"N	104°27'06.078"W	1.92	
3351.00	4.280	46.040	3350.74	-3.12	3.11	-0.65	40°20'51.898"N	104°27'06.053"W	4.63	
3445.00	10.430	51.150	3443.92	-10.72	10.89	8.51	40°20'51.975"N	104°27'05.935"W	6.57	
3538.00	9.510	28.990	3535.55	-22.53	22.89	18.79	40°20'52.094"N	104°27'05.802"W	4.21	
3633.00	10.280	345.980	3629.26	-37.60	38.00	20.54	40°20'52.243"N	104°27'05.779"W	7.64	
3727.00	8.270	303.200	3722.13	-49.60	49.85	12.84	40°20'52.360"N	104°27'05.879"W	7.44	
3913.00	9.360	349.290	3906.15	-72.08	72.07	-1.18	40°20'52.580"N	104°27'06.060"W	3.74	
4007.00	9.340	34.380	3999.03	-85.84	85.89	1.71	40°20'52.716"N	104°27'06.022"W	7.60	
4100.00	8.560	39.570	4090.89	-97.24	97.46	10.38	40°20'52.831"N	104°27'05.910"W	1.21	
4194.00	8.730	36.470	4183.83	-108.20	108.58	19.08	40°20'52.941"N	104°27'05.798"W	0.53	
4286.00	9.470	45.450	4274.67	-118.94	119.51	28.62	40°20'53.049"N	104°27'05.675"W	1.74	
4379.00	9.220	56.070	4366.45	-128.24	129.04	40.26	40°20'53.143"N	104°27'05.524"W	1.87	
4472.00	9.340	56.780	4458.23	-136.29	137.33	52.75	40°20'53.225"N	104°27'05.363"W	0.18	
4565.00	9.290	49.150	4550.01	-145.10	146.37	64.75	40°20'53.314"N	104°27'05.208"W	1.33	
4659.00	9.300	48.040	4642.77	-154.93	156.42	76.13	40°20'53.413"N	104°27'05.061"W	0.19	
4752.00	9.760	44.390	4734.49	-165.37	167.07	87.23	40°20'53.519"N	104°27'04.918"W	0.82	
4844.00	9.410	44.000	4825.20	-176.14	178.06	97.91	40°20'53.627"N	104°27'04.780"W	0.39	
4937.00	9.640	49.420	4916.92	-186.46	188.59	109.11	40°20'53.731"N	104°27'04.635"W	1.00	
5030.00	9.400	44.730	5008.64	-196.70	199.05	120.37	40°20'53.835"N	104°27'04.490"W	0.87	
5122.00	9.680	43.620	5099.37	-207.44	209.99	130.99	40°20'53.943"N	104°27'04.353"W	0.36	
5215.00	9.620	25.640	5191.08	-219.93	222.66	139.75	40°20'54.068"N	104°27'04.239"W	3.23	
5309.00	8.640	20.460	5283.89	-233.52	236.35	145.62	40°20'54.203"N	104°27'04.164"W	1.36	
5402.00	8.530	43.690	5375.87	-244.91	247.89	152.83	40°20'54.317"N	104°27'04.071"W	3.71	
5496.00	9.910	56.340	5468.66	-254.21	257.41	164.38	40°20'54.411"N	104°27'03.921"W	2.60	
5589.00	9.730	34.780	5560.33	-264.89	268.31	175.52	40°20'54.519"N	104°27'03.777"W	3.94	
5683.00	10.860	343.990	5653.00	-279.91	283.37	177.62	40°20'54.668"N	104°27'03.750"W	9.42	
5776.00	3.450	299.140	5745.26	-289.81	293.18	172.75	40°20'54.765"N	104°27'03.813"W	9.41	



Actual Wellpath Report

WETCO FARMS A11-4-9MRLNB AWP

Page 4 of 9



REFERENCE WELLPATH IDENTIFICATION

Operator	BONANZA CREEK OIL COMPANY	Slot	SLOT#33 WETCO FARMS A11-4-9MRLNB (346'FNL & 172'FWL, SEC.04)
Area	COLORADO	Well	WETCO FARMS A11-4-9MRLNB
Field	WELD COUNTY	Wellbore	WETCO FARMS A11-4-9MRLNB AWB
Facility	SEC.04-T04N-R63W		

WELLPATH DATA (145 stations) † = interpolated/extrapolated station

MD [ft]	Inclination [°]	Azimuth [°]	TVD [ft]	Vert Sect [ft]	North [ft]	East [ft]	Latitude	Longitude	DLS [°/100ft]	Comments
5869.00	10.070	162.160	5837.85	-283.41	286.77	172.79	40°20'54.701"N	104°27'03.813"W	13.77	
5963.00	18.190	175.650	5928.95	-260.84	264.28	176.43	40°20'54.479"N	104°27'03.766"W	9.27	
6058.00	26.400	181.930	6016.79	-224.88	228.32	176.85	40°20'54.124"N	104°27'03.760"W	8.99	
6152.00	36.510	173.580	6096.91	-176.02	179.49	179.28	40°20'53.641"N	104°27'03.729"W	11.69	
6245.00	45.970	176.270	6166.76	-114.93	118.50	184.56	40°20'53.039"N	104°27'03.661"W	10.35	
6338.00	56.920	177.910	6224.64	-42.36	45.97	188.16	40°20'52.322"N	104°27'03.614"W	11.85	
6431.00	67.380	179.980	6268.03	39.75	-36.12	189.60	40°20'51.511"N	104°27'03.596"W	11.42	
6513.00†	77.272	178.434	6292.90	117.78	-114.14	190.71	40°20'50.740"N	104°27'03.581"W	12.20	TOP OF PRODUCTION (460'FNL & 365'FWL, SEC.04)
6525.00	78.720	178.220	6295.39	129.52	-125.87	191.06	40°20'50.624"N	104°27'03.577"W	12.20	
6619.00	90.370	177.290	6304.31	222.91	-219.22	194.72	40°20'49.701"N	104°27'03.530"W	12.43	
6712.00	91.940	176.550	6302.44	315.83	-312.06	199.72	40°20'48.784"N	104°27'03.465"W	1.87	
6805.00	92.000	176.310	6299.24	408.69	-404.82	205.50	40°20'47.867"N	104°27'03.390"W	0.27	
6899.00	91.970	175.620	6295.99	502.51	-498.53	212.12	40°20'46.941"N	104°27'03.305"W	0.73	
6993.00	92.000	177.720	6292.73	596.38	-592.31	217.57	40°20'46.015"N	104°27'03.234"W	2.23	
7086.00	90.000	179.270	6291.11	689.35	-685.26	220.01	40°20'45.096"N	104°27'03.203"W	2.72	
7179.00	89.720	178.350	6291.33	782.35	-778.24	221.94	40°20'44.177"N	104°27'03.178"W	1.03	
7273.00	89.570	176.880	6291.92	876.32	-872.15	225.86	40°20'43.249"N	104°27'03.127"W	1.57	
7367.00	89.910	176.500	6292.34	970.25	-965.99	231.28	40°20'42.322"N	104°27'03.057"W	0.54	
7459.00	90.400	179.200	6292.09	1062.23	-1057.92	234.73	40°20'41.414"N	104°27'03.013"W	2.98	
7553.00	89.970	185.380	6291.79	1156.02	-1151.80	230.98	40°20'40.486"N	104°27'03.061"W	6.59	
7647.00	90.520	187.970	6291.39	1249.15	-1245.15	220.06	40°20'39.563"N	104°27'03.202"W	2.82	
7740.00	90.650	187.240	6290.44	1341.07	-1337.33	207.75	40°20'38.652"N	104°27'03.361"W	0.80	
7834.00	90.490	184.930	6289.50	1434.32	-1430.79	197.78	40°20'37.729"N	104°27'03.490"W	2.46	
7927.00	90.180	184.460	6288.96	1526.84	-1523.47	190.17	40°20'36.813"N	104°27'03.588"W	0.61	
8020.00	90.280	184.350	6288.59	1619.41	-1616.20	183.03	40°20'35.897"N	104°27'03.681"W	0.16	
8114.00	90.250	183.920	6288.15	1713.02	-1709.95	176.25	40°20'34.970"N	104°27'03.768"W	0.46	
8207.00	90.000	182.430	6287.95	1805.76	-1802.81	171.10	40°20'34.053"N	104°27'03.835"W	1.62	
8302.00	90.090	180.950	6287.87	1900.64	-1897.76	168.30	40°20'33.114"N	104°27'03.871"W	1.56	
8395.00	89.750	180.060	6288.00	1993.61	-1990.76	167.48	40°20'32.195"N	104°27'03.882"W	1.02	
8488.00	89.750	178.080	6288.41	2086.60	-2083.74	168.99	40°20'31.277"N	104°27'03.862"W	2.13	



Actual Wellpath Report

WETCO FARMS A11-4-9MRLNB AWP

Page 5 of 9



REFERENCE WELLPATH IDENTIFICATION

Operator	BONANZA CREEK OIL COMPANY	Slot	SLOT#33 WETCO FARMS A11-4-9MRLNB (346'FNL & 172'FWL, SEC.04)
Area	COLORADO	Well	WETCO FARMS A11-4-9MRLNB
Field	WELD COUNTY	Wellbore	WETCO FARMS A11-4-9MRLNB AWB
Facility	SEC.04-T04N-R63W		

WELLPATH DATA (145 stations)

MD [ft]	Inclination [°]	Azimuth [°]	TVD [ft]	Vert Sect [ft]	North [ft]	East [ft]	Latitude	Longitude	DLS [°/100ft]	Comments
8582.00	90.060	179.710	6288.57	2180.60	-2177.72	170.80	40°20'30.348"N	104°27'03.839"W	1.77	
8675.00	89.970	181.720	6288.54	2273.54	-2270.71	169.64	40°20'29.429"N	104°27'03.854"W	2.16	
8767.00	89.630	181.210	6288.86	2365.45	-2362.68	167.29	40°20'28.520"N	104°27'03.884"W	0.67	
8861.00	89.850	180.790	6289.29	2459.39	-2456.66	165.65	40°20'27.592"N	104°27'03.905"W	0.50	
8955.00	89.690	179.750	6289.67	2553.36	-2550.66	165.21	40°20'26.663"N	104°27'03.911"W	1.12	
9048.00	89.750	179.040	6290.12	2646.35	-2643.65	166.19	40°20'25.744"N	104°27'03.898"W	0.77	
9142.00	90.000	179.240	6290.33	2740.35	-2737.64	167.60	40°20'24.815"N	104°27'03.880"W	0.34	
9235.00	90.090	180.520	6290.25	2833.34	-2830.64	167.79	40°20'23.896"N	104°27'03.878"W	1.38	
9328.00	90.060	181.370	6290.13	2926.28	-2923.62	166.26	40°20'22.977"N	104°27'03.897"W	0.91	
9421.00	89.820	181.080	6290.23	3019.20	-3016.60	164.27	40°20'22.058"N	104°27'03.923"W	0.40	
9514.00	89.750	179.440	6290.58	3112.17	-3109.60	163.85	40°20'21.139"N	104°27'03.928"W	1.77	
9605.00	89.970	178.610	6290.80	3203.17	-3200.58	165.40	40°20'20.240"N	104°27'03.908"W	0.94	
9699.00	90.150	178.280	6290.70	3297.16	-3294.55	167.95	40°20'19.312"N	104°27'03.876"W	0.40	
9792.00	89.850	178.040	6290.70	3390.16	-3387.50	170.94	40°20'18.393"N	104°27'03.837"W	0.41	
9887.00	90.120	177.890	6290.73	3485.14	-3482.44	174.31	40°20'17.455"N	104°27'03.793"W	0.33	
9980.00	90.150	179.080	6290.51	3578.14	-3575.41	176.77	40°20'16.536"N	104°27'03.762"W	1.28	
10074.00	90.060	181.440	6290.33	3672.11	-3669.40	176.34	40°20'15.608"N	104°27'03.767"W	2.51	
10166.00	89.970	182.120	6290.31	3763.99	-3761.35	173.48	40°20'14.699"N	104°27'03.804"W	0.75	
10259.00	89.880	181.130	6290.43	3856.88	-3854.31	170.85	40°20'13.780"N	104°27'03.838"W	1.07	
10353.00	89.970	180.460	6290.56	3950.83	-3948.31	169.54	40°20'12.851"N	104°27'03.855"W	0.72	
10447.00	90.220	180.020	6290.40	4044.81	-4042.30	169.15	40°20'11.923"N	104°27'03.860"W	0.54	
10539.00	89.970	178.380	6290.25	4136.80	-4134.29	170.43	40°20'11.014"N	104°27'03.844"W	1.80	
10633.00	89.850	178.600	6290.39	4230.80	-4228.26	172.91	40°20'10.085"N	104°27'03.812"W	0.27	
10727.00	89.820	179.320	6290.67	4324.80	-4322.24	174.62	40°20'09.156"N	104°27'03.790"W	0.77	
10820.00	89.720	179.710	6291.04	4417.79	-4415.24	175.40	40°20'08.237"N	104°27'03.779"W	0.43	
10914.00	90.030	180.760	6291.24	4511.76	-4509.24	175.02	40°20'07.309"N	104°27'03.784"W	1.16	
11008.00	89.970	181.890	6291.24	4605.68	-4603.21	172.84	40°20'06.380"N	104°27'03.812"W	1.20	
11101.00	89.910	180.900	6291.34	4698.59	-4696.18	170.58	40°20'05.461"N	104°27'03.842"W	1.07	
11195.00	90.310	181.180	6291.16	4792.52	-4790.16	168.87	40°20'04.532"N	104°27'03.864"W	0.52	
11289.00	90.120	180.490	6290.81	4886.47	-4884.15	167.50	40°20'03.604"N	104°27'03.881"W	0.76	



Actual Wellpath Report

WETCO FARMS A11-4-9MRLNB AWP

Page 6 of 9



REFERENCE WELLPATH IDENTIFICATION

Operator	BONANZA CREEK OIL COMPANY	Slot	SLOT#33 WETCO FARMS A11-4-9MRLNB (346'FNL & 172'FWL, SEC.04)
Area	COLORADO	Well	WETCO FARMS A11-4-9MRLNB
Field	WELD COUNTY	Wellbore	WETCO FARMS A11-4-9MRLNB AWB
Facility	SEC.04-T04N-R63W		

WELLPATH DATA (145 stations)

MD [ft]	Inclination [°]	Azimuth [°]	TVD [ft]	Vert Sect [ft]	North [ft]	East [ft]	Latitude	Longitude	DLS [°/100ft]	Comments
11383.00	90.030	178.720	6290.68	4980.46	-4978.15	168.15	40°20'02.675"N	104°27'03.873"W	1.89	
11476.00	90.180	179.040	6290.51	5073.46	-5071.13	169.97	40°20'01.756"N	104°27'03.850"W	0.38	
11569.00	91.110	179.890	6289.47	5166.44	-5164.12	170.84	40°20'00.837"N	104°27'03.838"W	1.35	
11662.00	91.080	180.590	6287.69	5259.40	-5257.10	170.45	40°19'59.918"N	104°27'03.843"W	0.75	
11850.00	90.370	182.750	6285.31	5447.15	-5444.99	164.97	40°19'58.062"N	104°27'03.914"W	1.21	
11943.00	89.050	182.810	6285.78	5539.94	-5537.88	160.46	40°19'57.144"N	104°27'03.972"W	1.42	
12038.00	88.950	182.020	6287.44	5634.74	-5632.78	156.46	40°19'56.206"N	104°27'04.024"W	0.84	
12133.00	88.890	180.690	6289.23	5729.64	-5727.73	154.21	40°19'55.268"N	104°27'04.053"W	1.40	
12225.00	89.080	181.210	6290.86	5821.56	-5819.71	152.69	40°19'54.359"N	104°27'04.073"W	0.60	
12319.00	90.000	179.950	6291.61	5915.52	-5913.70	151.73	40°19'53.430"N	104°27'04.085"W	1.66	
12414.00	90.120	179.880	6291.52	6010.50	-6008.70	151.88	40°19'52.491"N	104°27'04.083"W	0.15	
12508.00	90.180	178.850	6291.27	6104.50	-6102.69	152.92	40°19'51.562"N	104°27'04.070"W	1.10	
12602.00	89.820	179.200	6291.27	6198.50	-6196.67	154.52	40°19'50.634"N	104°27'04.049"W	0.53	
12695.00	89.720	179.910	6291.64	6291.49	-6289.67	155.24	40°19'49.715"N	104°27'04.040"W	0.77	
12788.00	89.820	180.610	6292.02	6384.46	-6382.67	154.82	40°19'48.796"N	104°27'04.045"W	0.76	
12881.00	89.850	181.900	6292.28	6477.38	-6475.64	152.78	40°19'47.877"N	104°27'04.072"W	1.39	
12974.00	90.220	183.010	6292.23	6570.20	-6568.56	148.80	40°19'46.959"N	104°27'04.123"W	1.26	
13067.00	89.970	182.930	6292.07	6662.97	-6661.43	143.98	40°19'46.041"N	104°27'04.185"W	0.28	
13160.00	91.020	182.180	6291.27	6755.77	-6754.33	139.83	40°19'45.123"N	104°27'04.239"W	1.39	
13253.00	89.970	181.520	6290.47	6848.64	-6847.28	136.83	40°19'44.205"N	104°27'04.278"W	1.33	
13348.00	90.220	181.400	6290.31	6943.55	-6942.25	134.41	40°19'43.266"N	104°27'04.309"W	0.29	
13441.00	90.220	181.030	6289.95	7036.47	-7035.23	132.44	40°19'42.347"N	104°27'04.334"W	0.40	
13535.00	90.120	181.630	6289.67	7130.39	-7129.20	130.26	40°19'41.419"N	104°27'04.363"W	0.65	
13628.00	90.000	181.010	6289.57	7223.30	-7222.17	128.11	40°19'40.500"N	104°27'04.390"W	0.68	
13657.00	90.000	181.010	6289.57	7252.28	-7251.17	127.60	40°19'40.213"N	104°27'04.397"W	0.00	5-1/2", BOTTOM HOLE (2164'FNL & 374'FWL, SEC.09)



Actual Wellpath Report

WETCO FARMS A11-4-9MRLNB AWP

Page 7 of 9



REFERENCE WELLPATH IDENTIFICATION			
Operator	BONANZA CREEK OIL COMPANY	Slot	SLOT#33 WETCO FARMS A11-4-9MRLNB (346'FNL & 172'FWL, SEC.04)
Area	COLORADO	Well	WETCO FARMS A11-4-9MRLNB
Field	WELD COUNTY	Wellbore	WETCO FARMS A11-4-9MRLNB AWB
Facility	SEC.04-T04N-R63W		

HOLE & CASING SECTIONS - Ref Wellbore: WETCO FARMS A11-4-9MRLNB AWB Ref Wellpath: WETCO FARMS A11-4-9MRLNB AWP									
String/Diameter	Start MD [ft]	End MD [ft]	Interval [ft]	Start TVD [ft]	End TVD [ft]	Start N/S [ft]	Start E/W [ft]	End N/S [ft]	End E/W [ft]
9.625in Casing	17.00	1600.00	1583.00	17.00	1599.95	0.00	0.00	1.57	-3.40

TARGETS								
Name	TVD [ft]	North [ft]	East [ft]	Grid East [US ft]	Grid North [US ft]	Latitude	Longitude	Shape
WETCO FARMS A11-4-9MRLNB BHL (2156'FNL & 375'FWL, SEC.09)	6312.00	-7243.77	139.03	3292411.16	1364008.55	40°19'40.287"N	104°27'04.249"W	point
WETCO FARMS A11-4-9MRLNB LP REV-1 (615'FNL & 375'FWL, SEC.04)	6312.00	-269.77	209.03	3292398.71	1370982.58	40°20'49.202"N	104°27'03.345"W	point
WETCO FARMS A11-4-9MRLNB BHL REV-1 (2156'FNL & 375'FWL, SEC.09)	6317.00	-7243.77	139.03	3292411.16	1364008.55	40°19'40.287"N	104°27'04.249"W	point
WETCO FARMS A11-4-9MRLNB LP REV-2 (615'FNL & 375'FWL, SEC.04)	6317.00	-269.77	209.03	3292398.71	1370982.58	40°20'49.202"N	104°27'03.345"W	point
SEC.04/09-T04N-R63W (460'FNL SEC.04 & 460'FSL OF 1/2 SEC.09)	11999.00	-0.77	0.03	3292186.55	1371249.08	40°20'51.860"N	104°27'06.044"W	polygon
SEC.04/09-T04N-R63W (WESTERN HALF SECTION)	11999.00	-0.77	0.03	3292186.55	1371249.08	40°20'51.860"N	104°27'06.044"W	polygon
*SEC.04-T04N-R63W	12000.00	-100.43	4878.20	3297065.35	1371207.10	40°20'50.870"N	104°26'03.041"W	polygon
SEC.09-T04N-R63W	12000.00	-100.43	4878.20	3297065.35	1371207.10	40°20'50.870"N	104°26'03.041"W	polygon



Actual Wellpath Report

WETCO FARMS A11-4-9MRLNB AWP

Page 8 of 9



REFERENCE WELLPATH IDENTIFICATION			
Operator	BONANZA CREEK OIL COMPANY	Slot	SLOT#33 WETCO FARMS A11-4-9MRLNB (346'FNL & 172'FWL, SEC.04)
Area	COLORADO	Well	WETCO FARMS A11-4-9MRLNB
Field	WELD COUNTY	Wellbore	WETCO FARMS A11-4-9MRLNB AWB
Facility	SEC.04-T04N-R63W		

WELLPATH COMPOSITION - Ref Wellbore: WETCO FARMS A11-4-9MRLNB AWB Ref Wellpath: WETCO FARMS A11-4-9MRLNB AWP				
Start MD [ft]	End MD [ft]	Positional Uncertainty Model	Log Name/Comment	Wellbore
17.00	1556.00	BHI NaviTrak (Rotating+Axial Corr)	BHA NAVITRAK (ROTATING+AXIAL CORR) <133-1556>	WETCO FARMS A11-4-9MRLNB AWB
1556.00	13628.00	BHI AutoTrak Curve (Axial Corr, Short spacing)	BHI AUTOTRAK CURVE (AXIAL CORR, SHORT SPACING) <1673-13628>	WETCO FARMS A11-4-9MRLNB AWB
13628.00	13657.00	Blind Drilling (std)	Projection to bit	WETCO FARMS A11-4-9MRLNB AWB



Actual Wellpath Report

WETCO FARMS A11-4-9MRLNB AWP

Page 9 of 9



REFERENCE WELLPATH IDENTIFICATION			
Operator	BONANZA CREEK OIL COMPANY	Slot	SLOT#33 WETCO FARMS A11-4-9MRLNB (346'FNL & 172'FWL, SEC.04)
Area	COLORADO	Well	WETCO FARMS A11-4-9MRLNB
Field	WELD COUNTY	Wellbore	WETCO FARMS A11-4-9MRLNB AWB
Facility	SEC.04-T04N-R63W		

WELLPATH COMMENTS				
MD [ft]	Inclination [°]	Azimuth [°]	TVD [ft]	Comment
6513.00	77.272	178.434	6292.90	TOP OF PRODUCTION (460'FNL & 365'FWL,SEC.04)
13657.00	90.000	181.010	6289.57	5-1/2",BOTTOM HOLE (2164'FNL & 374'FWL,SEC.09)