

# Construction and Storm Water Inspection

January 29, 2019

Operator: KERR MCGEE OIL & GAS ONSHORE LP – 47120

Location ID: 460006

Inspection Document #: 6749025010

Weld County, CO

SESE Section 15 T1N R66W

Russell Beam  
Reclamation Specialist, COGCC



**COLORADO**

**Oil & Gas Conservation  
Commission**

Department of Natural Resources

## Inspection Photos

Location Name: KERR MCGEE OIL & GAS ONSHORE LP – 47120/1N66W15

Location ID: 460006



**Photo 1.** Photo taken from the southwestern location, facing East. Operator has installed a sediment trap with a temporarily stabilized outlet. A ditch and berm BMP has been installed around the perimeter of the location. BMPs in proper functioning condition at the time of this inspection.



**Photo 2.** Photo taken from the southwestern location, facing North. See comments from Photo 1.

## Inspection Photos

Location Name: KERR MCGEE OIL & GAS ONSHORE LP – 47120/1N66W15

Location ID: 460006



**Photo 3.** Photo taken from southeastern perimeter of the location, facing North. See comments from Photo 1.



**Photo 4.** Photo taken from southeastern perimeter of the location, facing West. See comments from Photo 1.

## Inspection Photos

Location Name: KERR MCGEE OIL & GAS ONSHORE LP – 47120/1N66W15

Location ID: 460006



**Photo 5.** Photo taken from northeastern perimeter of the location, facing West. See comments from Photo 1.

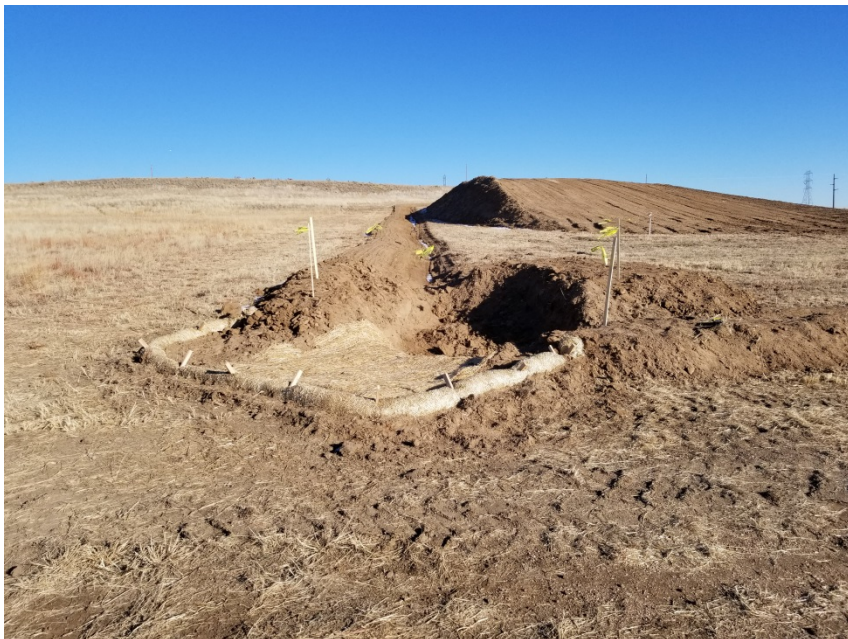


**Photo 6.** Photo taken from northeastern perimeter of the location, facing South. See comments from Photo 1.

## Inspection Photos

Location Name: KERR MCGEE OIL & GAS ONSHORE LP – 47120/1N66W15

Location ID: 460006



**Photo 7.** Photo taken from northwestern perimeter of the location, facing East. The topsoil stockpile being stored along the northern area has been temporarily stabilized with equipment tracking .



**Photo 8.** Photo taken from northwestern perimeter of the location, facing East. See comments from Photo 1.