

BRAN-DEX

WIRELINE SERVICES

GAMMA RAY CEMENT BOND

Company
Well
Field
Country
State/Prv

DIVERSIFIED OPERATING
HOFFMAN 34-1
CROW
WELD
COLORADO

Company **DIVERSIFIED OPERATING CORP.**
Well **HOFFMAN 34-1**
Field **CROW**
Country **WELD** State/Prv **COLORADO**

Location **NE / NE**
605' FEL & 628' FNL
SEC. 34 TWP. 8N RGE. 60W

Other Services
PERFORATE

Permanent Datum **GL** Elevation **4896**
Log Measured From **KB**
Drilling Measured From **KB**

Elevation
K.B. 4906
D.F. 4905
G.L. 4896

| | | | |
|------------------------|---------------|--|--|
| Date | JUNE 12, 1966 | | |
| Run Number | ONE | | |
| Depth Driller | 7013 | | |
| Depth Logger | 6987 | | |
| Bottom Logged Interval | 6981 | | |
| Top Log Interval | 5830 | | |
| Open Hole Size | | | |
| Type Fluid | WATER | | |
| Density / Viscosity | | | |
| Max. Recorded Temp. | 164 | | |
| Estimated Cement Top | 5955 | | |
| Time Well Ready | | | |
| Time Logger on Bottom | | | |
| Equipment Number | | | |
| Location | | | |
| Recorded By | CLIFF KAISER | | |
| Witnessed By | BILL SCOFIELD | | |

| Borehole Record | | | | Tubing Record | | | |
|-------------------|-----|------|--------|---------------|--------|--------|----|
| Run Number | Bit | From | To | Size | Weight | From | To |
| | | | | | | | |
| | | | | | | | |
| | | | | | | | |
| Casing Record | | Size | Wgt/Ft | Top | | Bottom | |
| Surface String | | | | | | | |
| Prot. String | | | | | | | |
| Production String | | 4.5 | | | | | |
| Liner | | | | | | | |

>>> Fold Here <<<

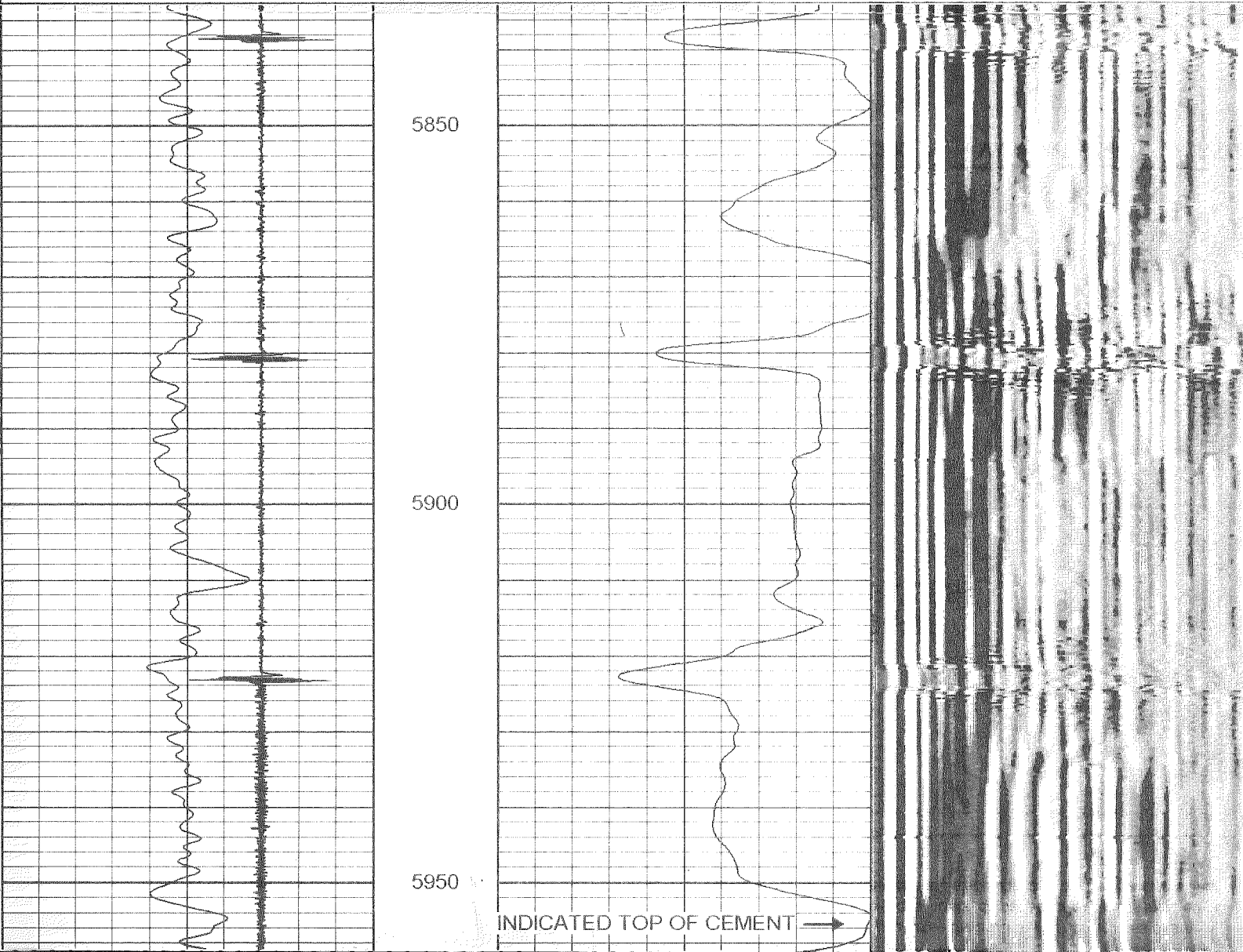
All interpretations are opinions based on inferences from electrical or other measurements and we cannot and do not guarantee the accuracy or correctness of any interpretation, and we shall not, except in the case of gross or willful negligence on our part, be liable or responsible for any loss, costs, damages, or expenses incurred or sustained by anyone resulting from any interpretation made by any of our officers, agents or employees. These interpretations are also subject to our general terms and conditions set out in our current Price Schedule.

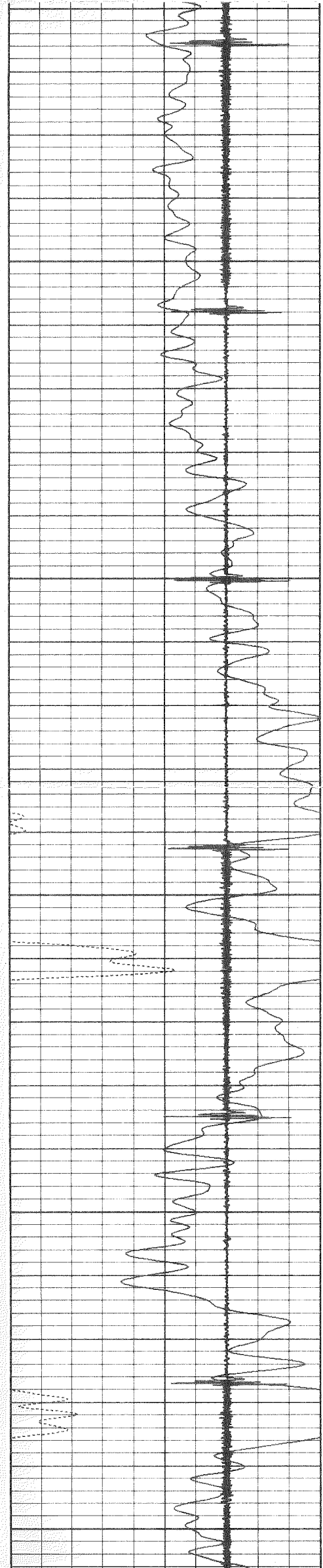
Comments

BRAN-DEX CORRECTED 12' UP HOLE TO CORROLATE
THANK YOU FOR USING BRAN-DEX WIRELINE SERVICES

Database File: doc.db
Dataset Pathname: pass2
Presentation Format: cbl01
Dataset Creation: Wed Jun 12 13:30:48 2002 by Log 6.2_B4
Charted by: Depth in Feet scaled 1:240

| | | | | | | | | |
|-----|------------------|-----|---|--------------------------|-----|-----|------------------|------|
| 9 | Collar Locator | -1 | 0 | Amplified Amplitude (mV) | 20 | 200 | Variable Density | 1200 |
| 0 | Gamma Ray (GAPI) | 200 | 0 | Amplitude (mV) | 100 | | | |
| 200 | gr (GAPI) | 300 | | | | | | |





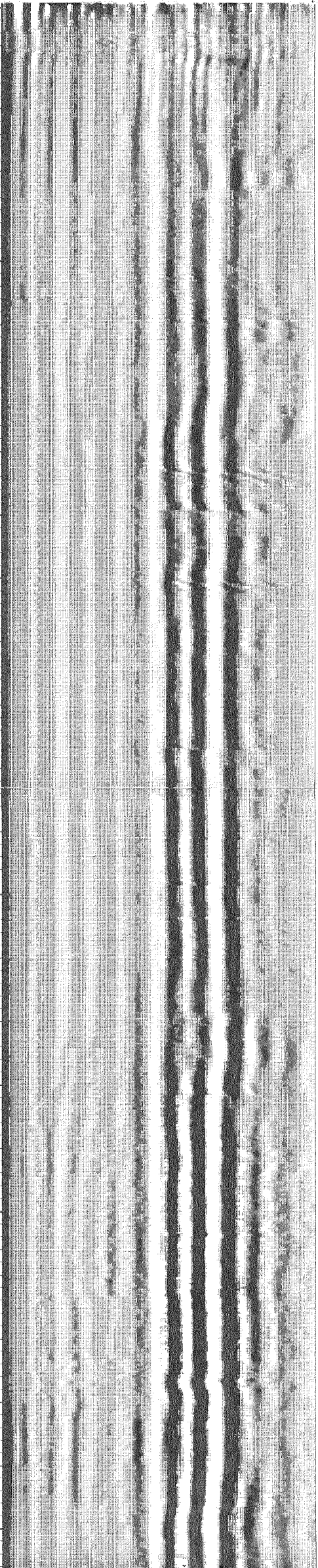
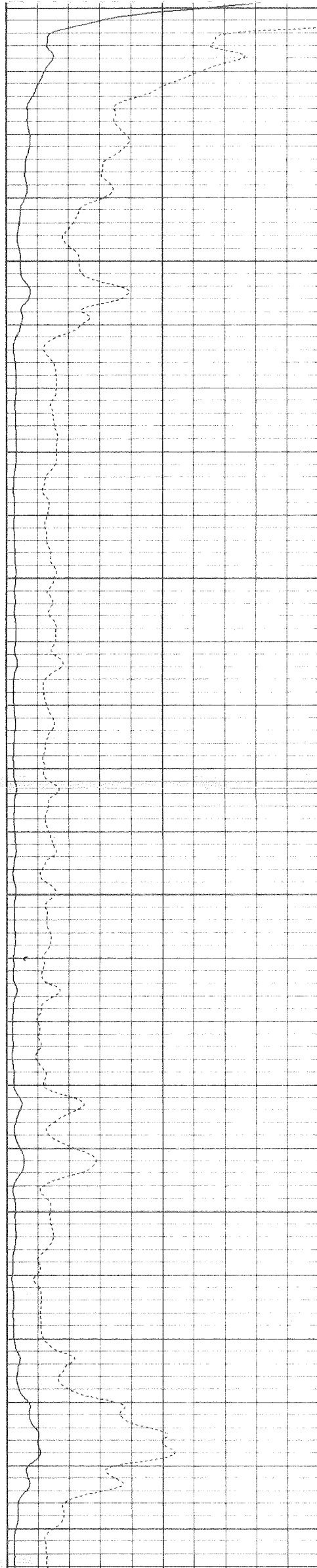
6000

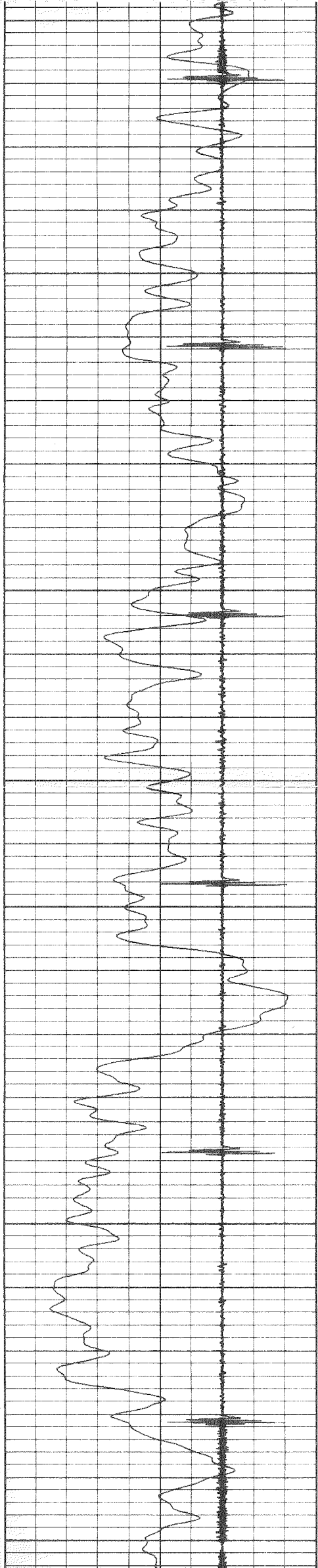
6050

6100

6150

6200





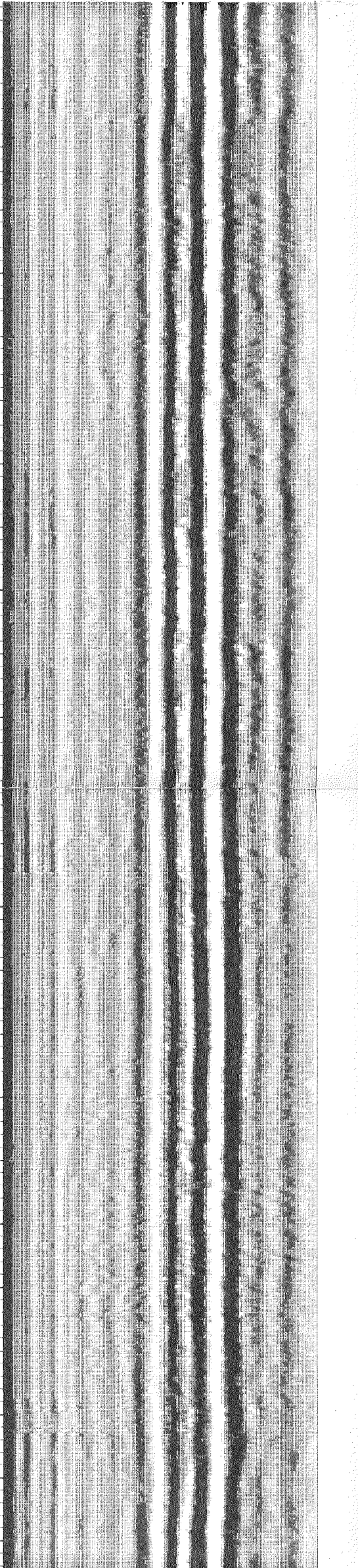
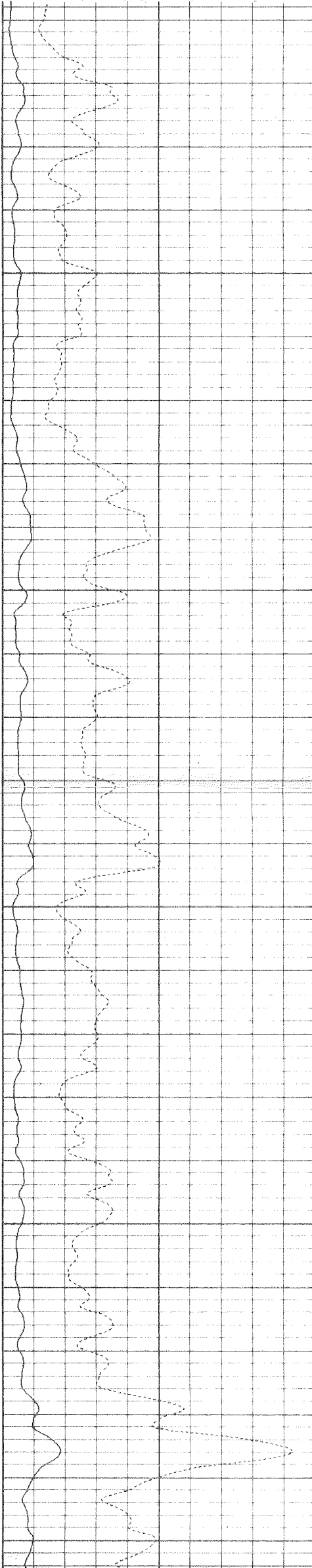
6250

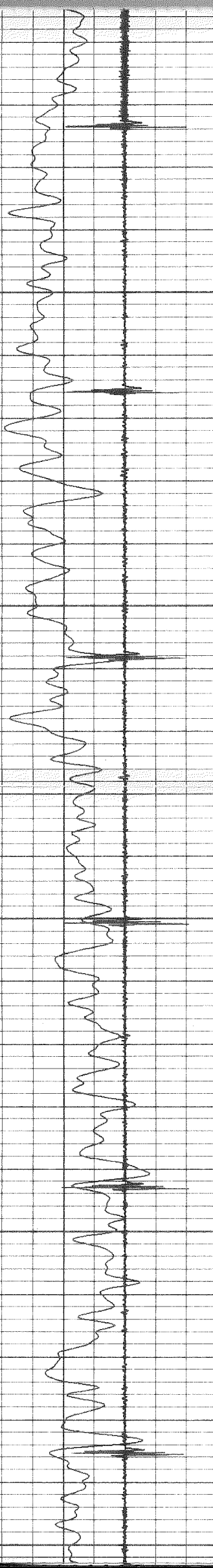
6300

6350

6400

6450





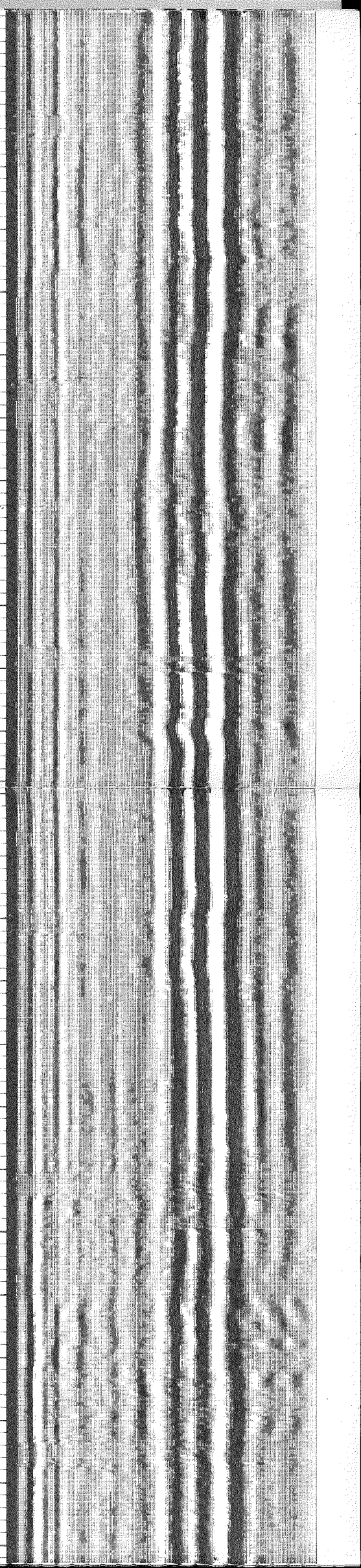
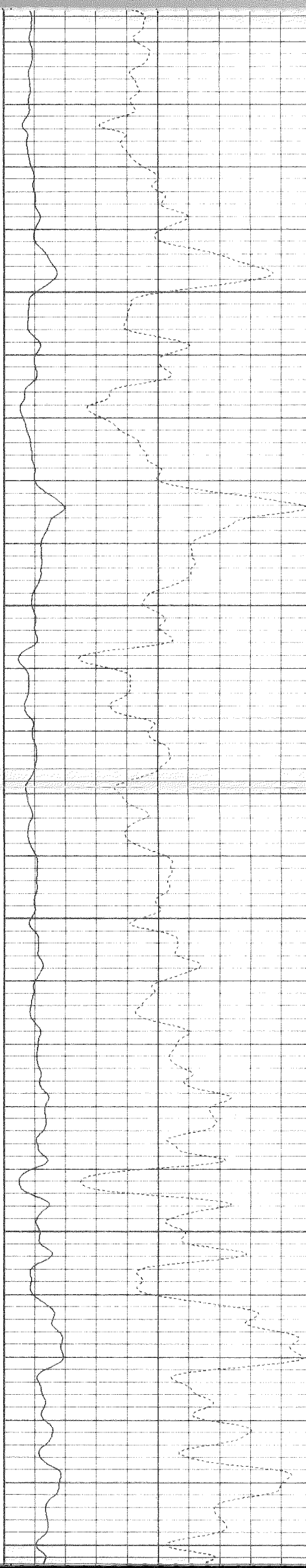
6500

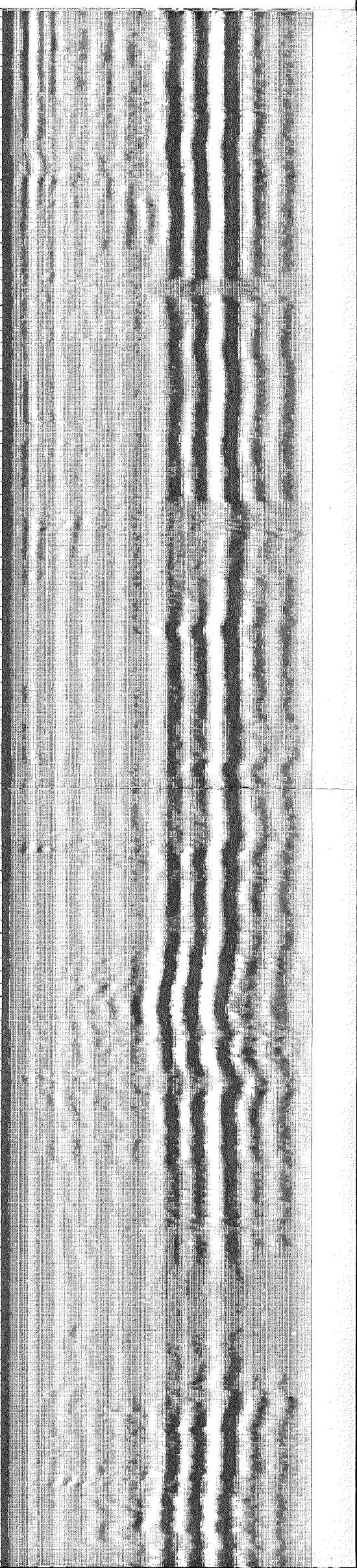
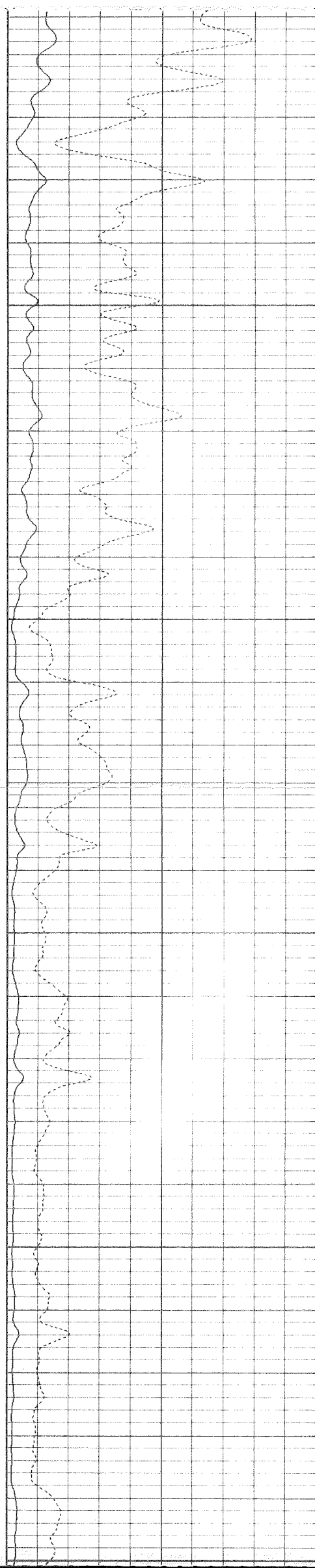
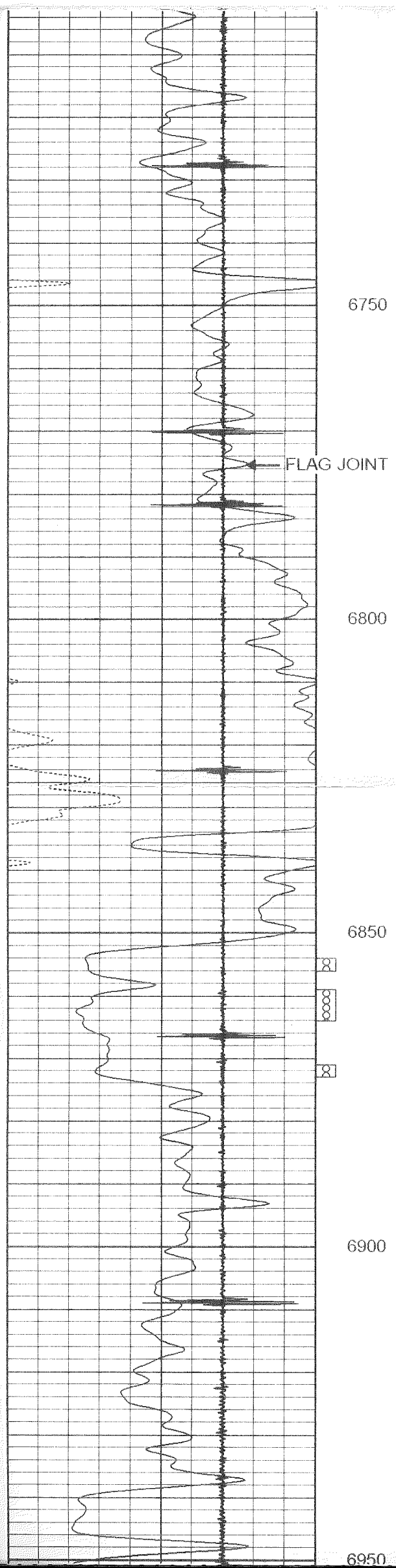
6550

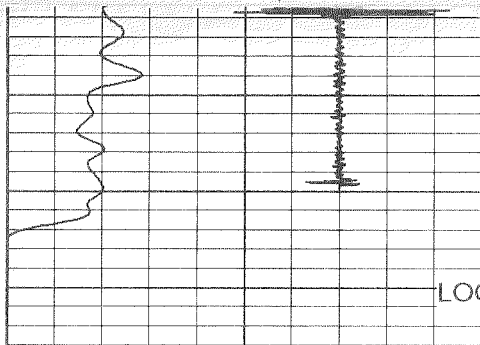
6600

6650

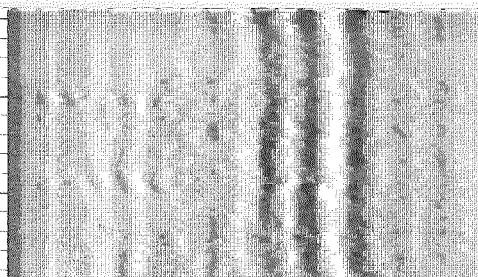
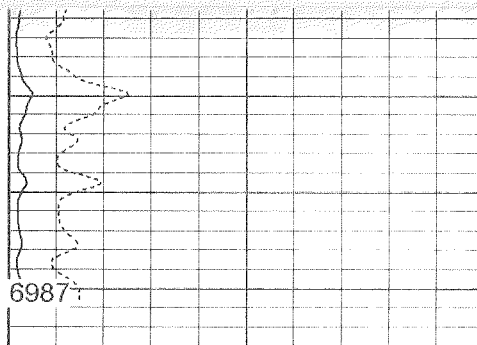
6700







LOGGERS T.D. 6987:



| | | |
|-----|------------------|-----|
| 9 | Collar Locator | -1 |
| 0 | Gamma Ray (GAPI) | 200 |
| 200 | gr (GAPI) | 300 |

| | | |
|---|--------------------------|-----|
| 0 | Amplified Amplitude (mV) | 20 |
| 0 | Amplitude (mV) | 100 |

| | | |
|-----|------------------|------|
| 200 | Variable Density | 1200 |
|-----|------------------|------|