

1	NaviGamma	12662918	Gamma (single)	10.69	47.40	6.750	3.250
1	NaviGamma	12662918	Directional (mag)	14.11	50.82	6.750	3.250
1	NaviGamma	12662918	VSS	14.11	50.82	6.750	3.250
2	NaviGamma	12662918	Gamma (single)	10.69	38.16	6.750	3.250
2	NaviGamma	12662918	Directional (mag)	14.11	41.58	6.750	3.250
2	NaviGamma	12662918	VSS	14.11	41.58	6.750	3.250
3	NaviGamma	12662918	Gamma (single)	10.69	38.13	6.750	3.250
3	NaviGamma	12662918	Directional (mag)	14.11	41.55	6.750	3.250
3	NaviGamma	12662918	VSS	14.11	41.55	6.750	3.250
4	NaviGamma	10481478	Gamma (single)	10.98	47.93	6.750	3.500
4	NaviGamma	10481478	VSS	14.40	51.35	6.750	3.500
4	NaviGamma	10481478	Directional (mag)	14.40	51.35	6.750	3.500

Service and Tool Mnemonics

Mnemonic	Name	Description
GAM	NaviGamma	Probe Based Gamma Module, NaviTrak Platform

Comments

- 1

Depth measurements were obtained from a depth control system not supplied or operated by Baker Hughes, a GE Company (BHGE). Due to the lack of control by BHGE logging engineers, depth calibrations and measurements could not be independently verified.
- 2

Baker Hughes run 1 utilized a 6.75 inch NaviGamma service (Gamma Ray and Directional) behind a 8.5 inch bit and steerable assembly from 1900 to 14019 feet MD (1877 to 6452 feet TVD).
- 3

A sliding indicator is shown to the left edge of track 1 as a heavy line. The indicator has been depth-shifted to the Gamma Ray sensor offset to correspond with Gamma Ray data acquired while sliding.
- 4

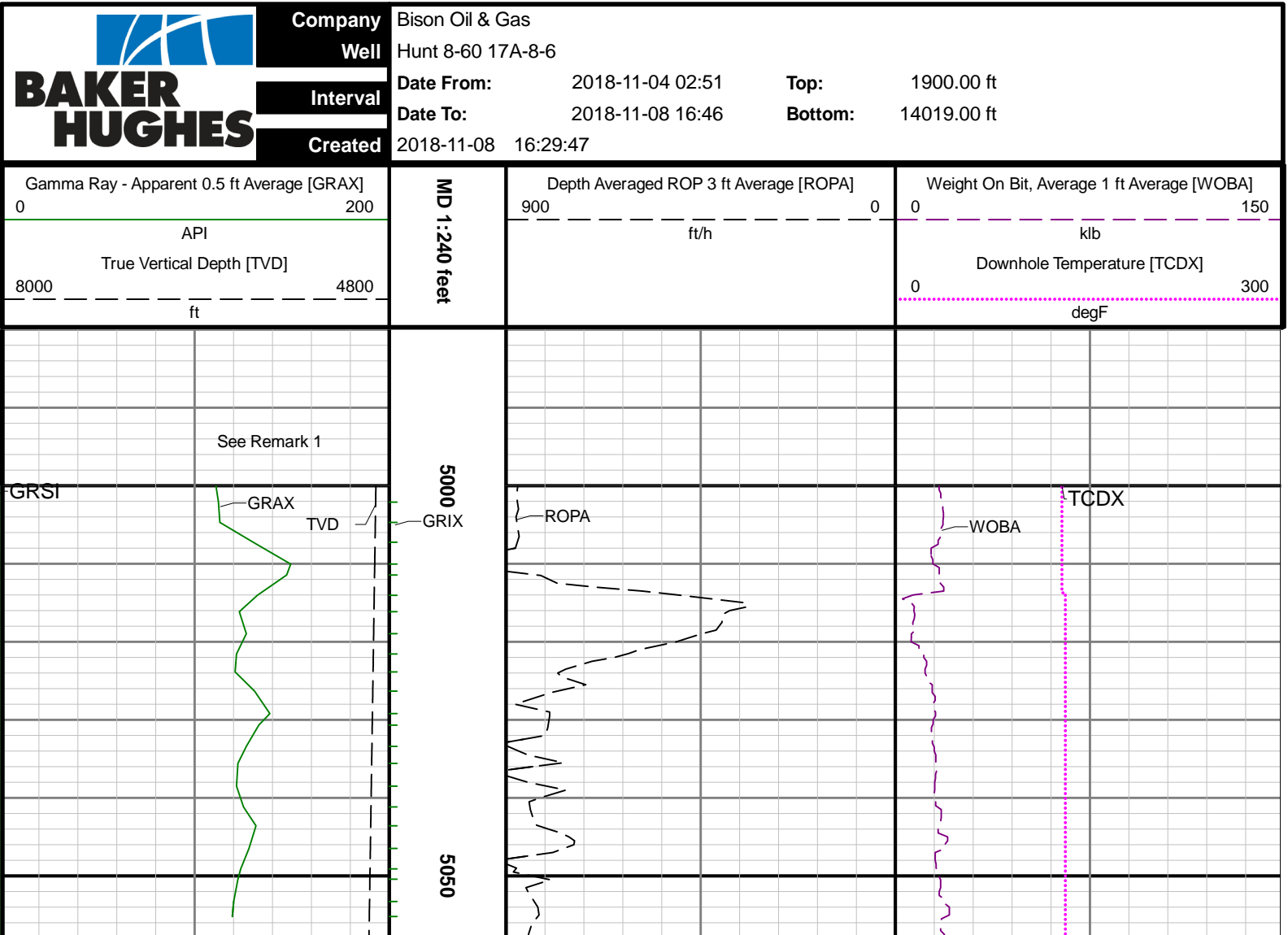
Gamma Ray (GRAX) scale is presented 0 to 200 API per customer request.

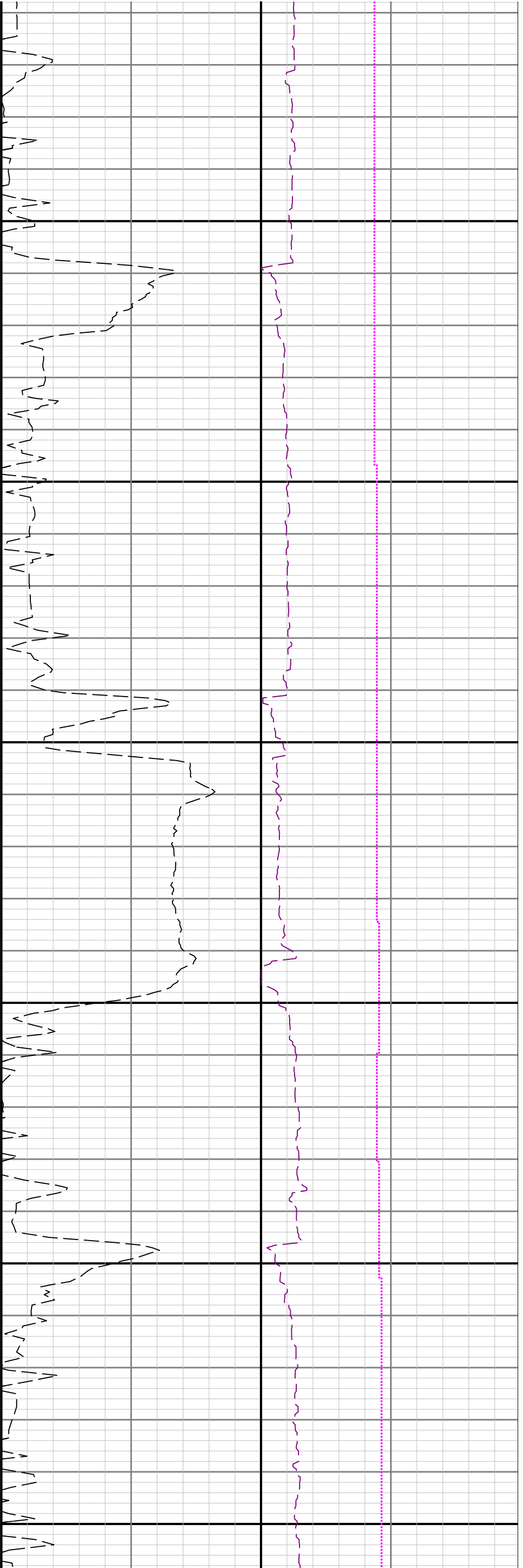
Remarks

Number	Measured Depth (ft)	Hole Section (in)	Run No.	Remark
1	5000.00	8.500	1	Baker Hughes began logging at 5000 feet MD (4910 feet TVD) per customer request.
2	13970.00	8.500	4	The interval from 13970 to 14019 feet MD (6454 feet TVD) was not logged due to sensor to bit offset at well TD.

Curve Mnemonics

Presented Curves	Description	Units
TCDX	Downhole Temperature	degF
ROPA	Depth Averaged ROP	ft/h
TVD	True Vertical Depth	ft
WOBA	Weight On Bit, Average	klb
GRAX	Gamma Ray - Apparent	API
GRIX	Gamma Ray - Data Point Indicator	unitless
GRSI	Sliding Indicator Flag	unitless





5100

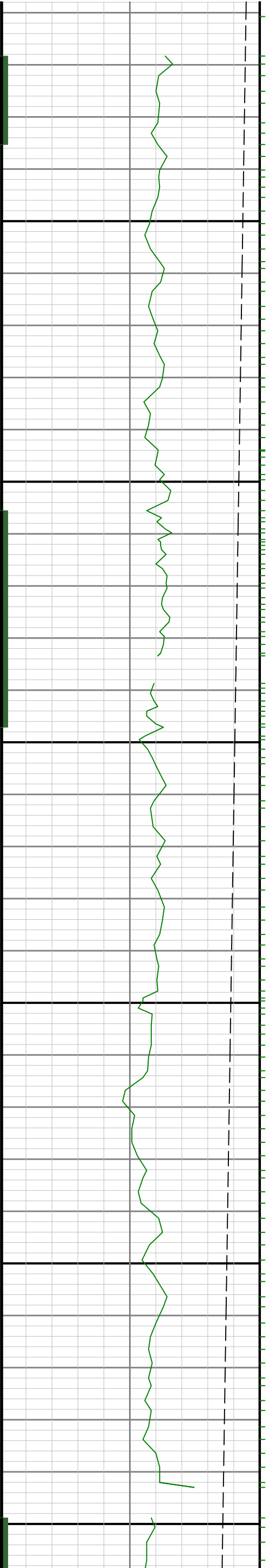
5150

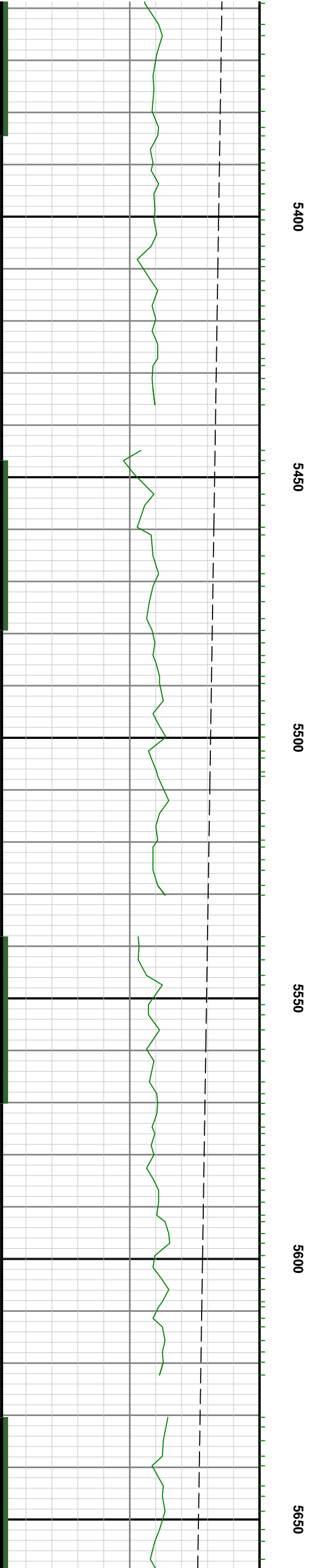
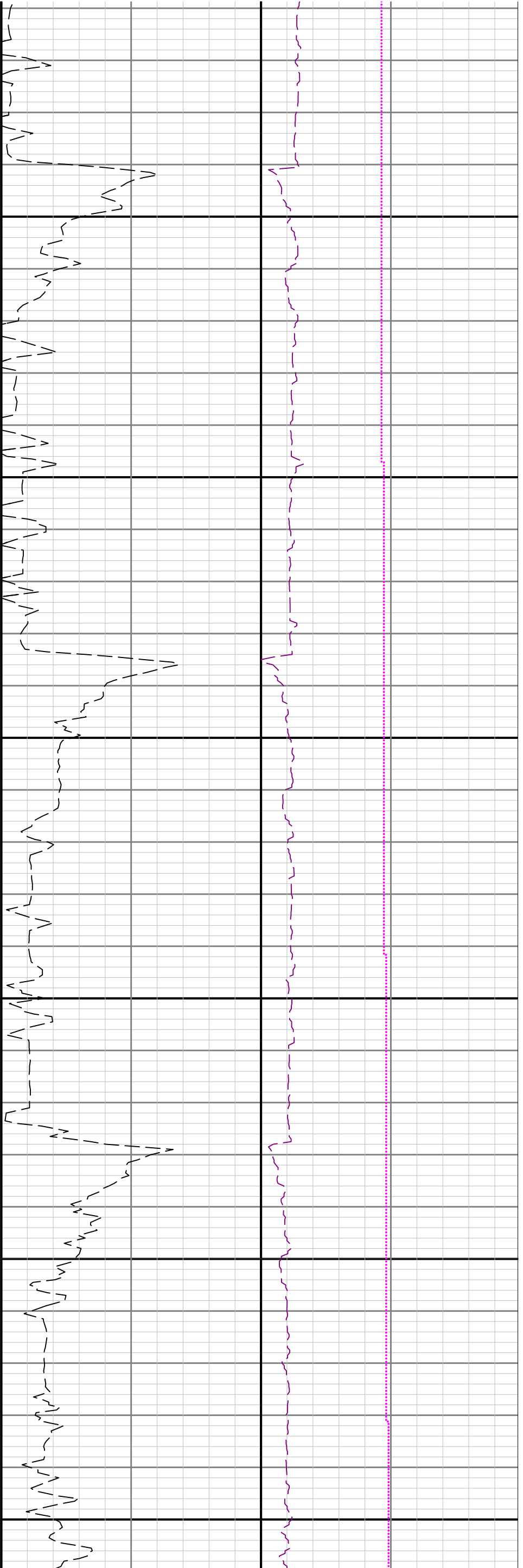
5200

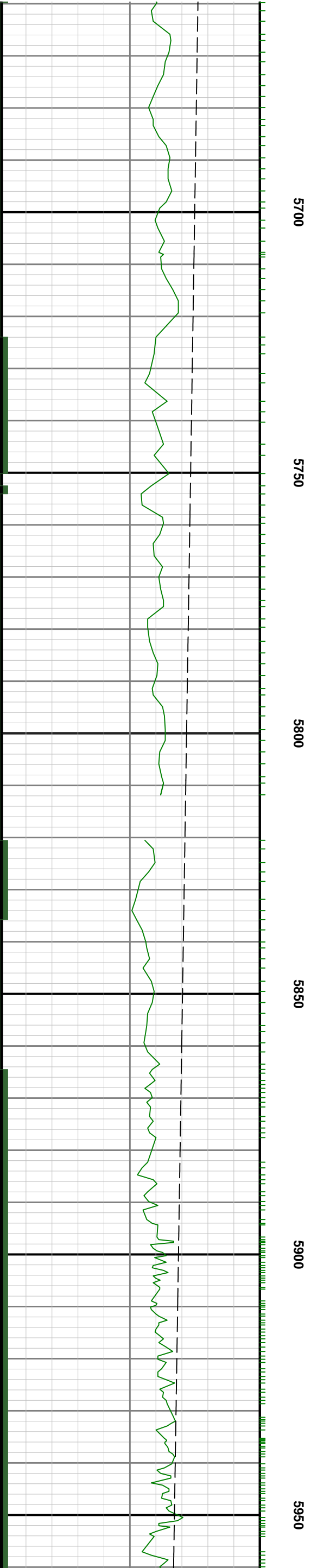
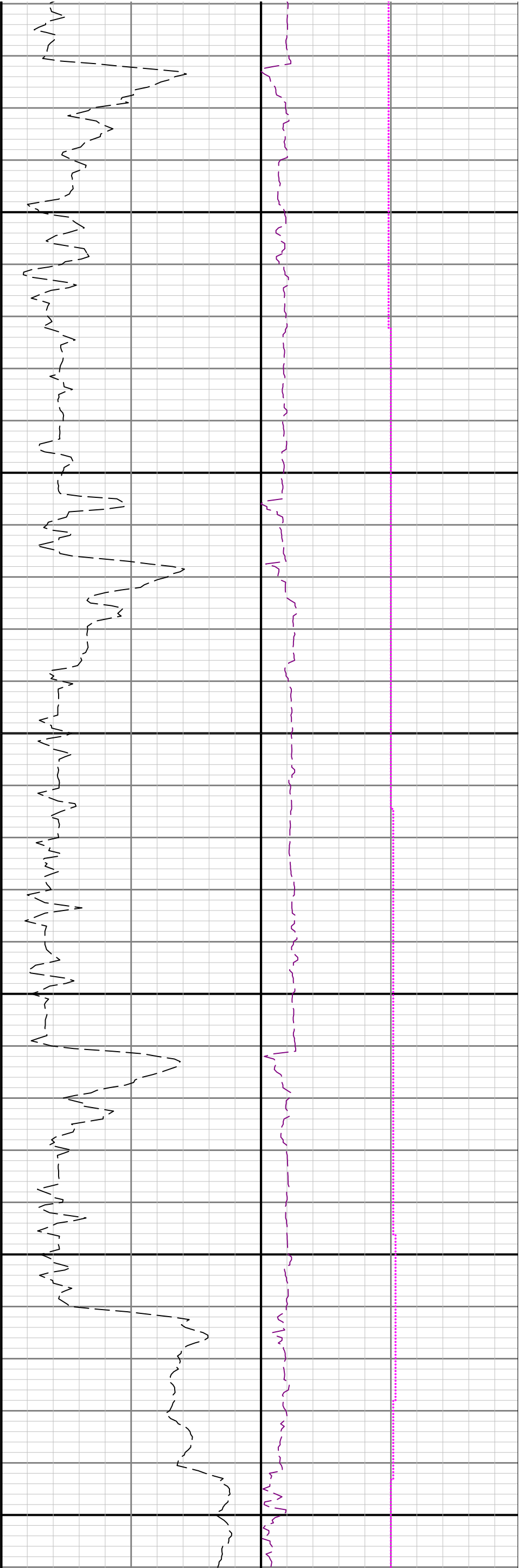
5250

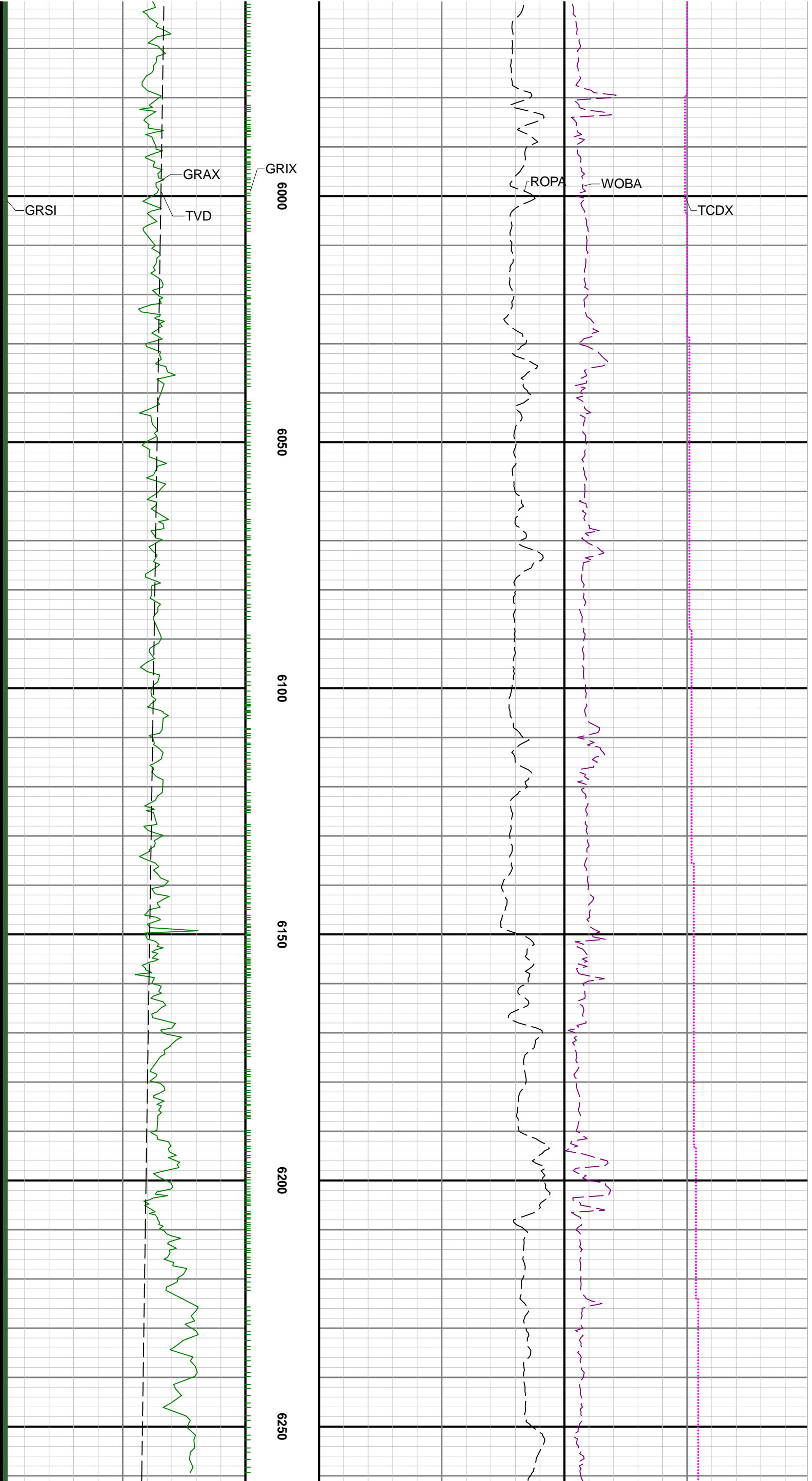
5300

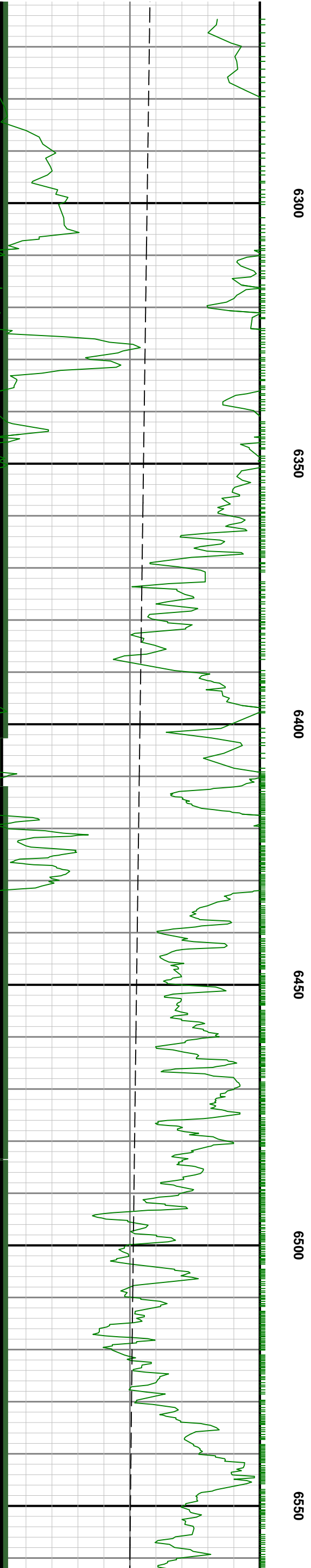
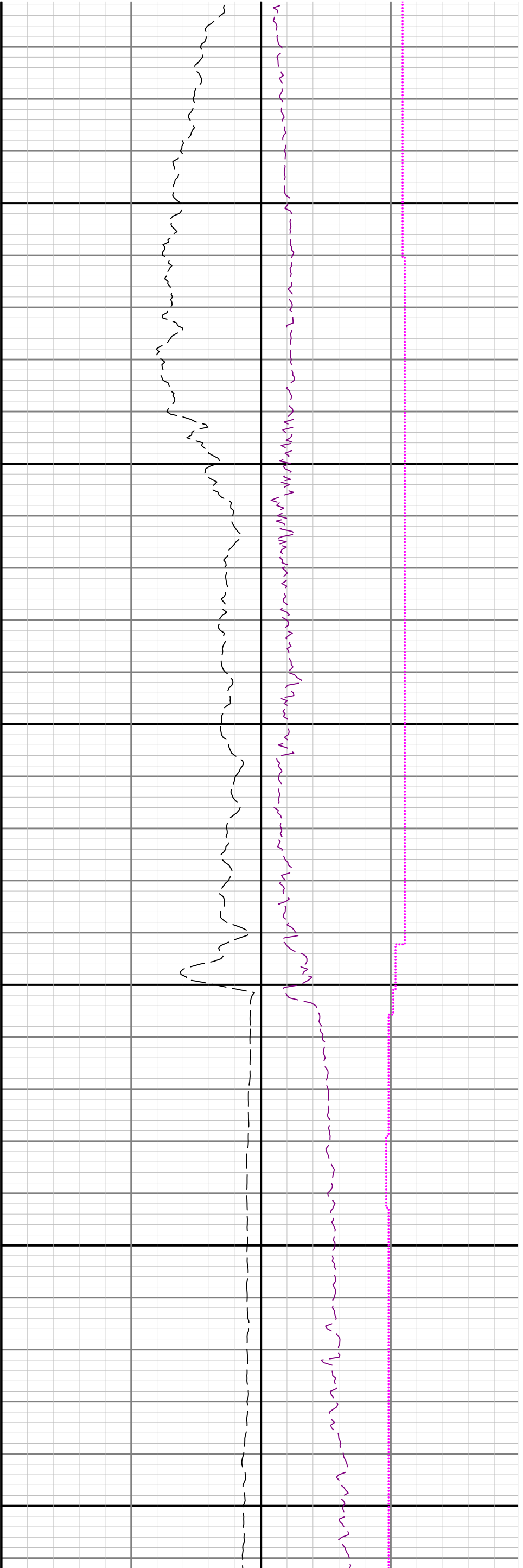
5350

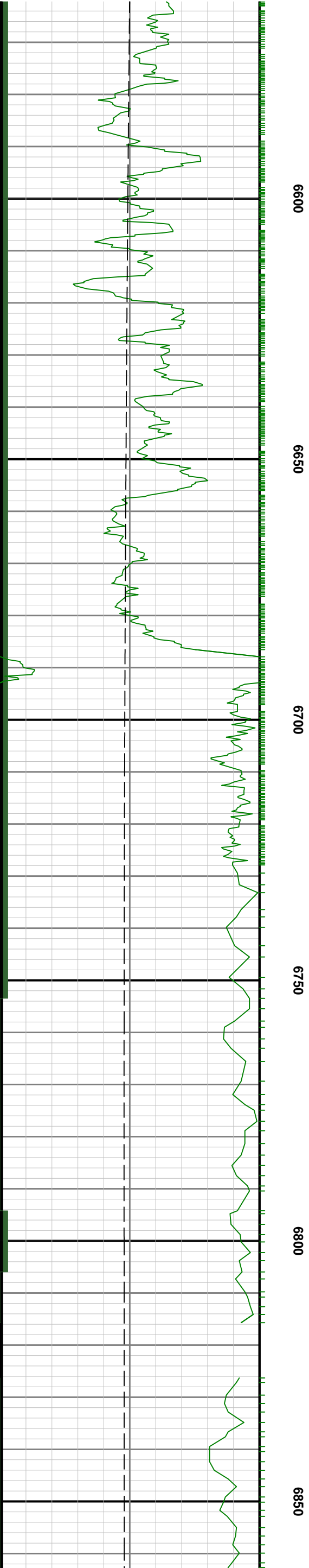
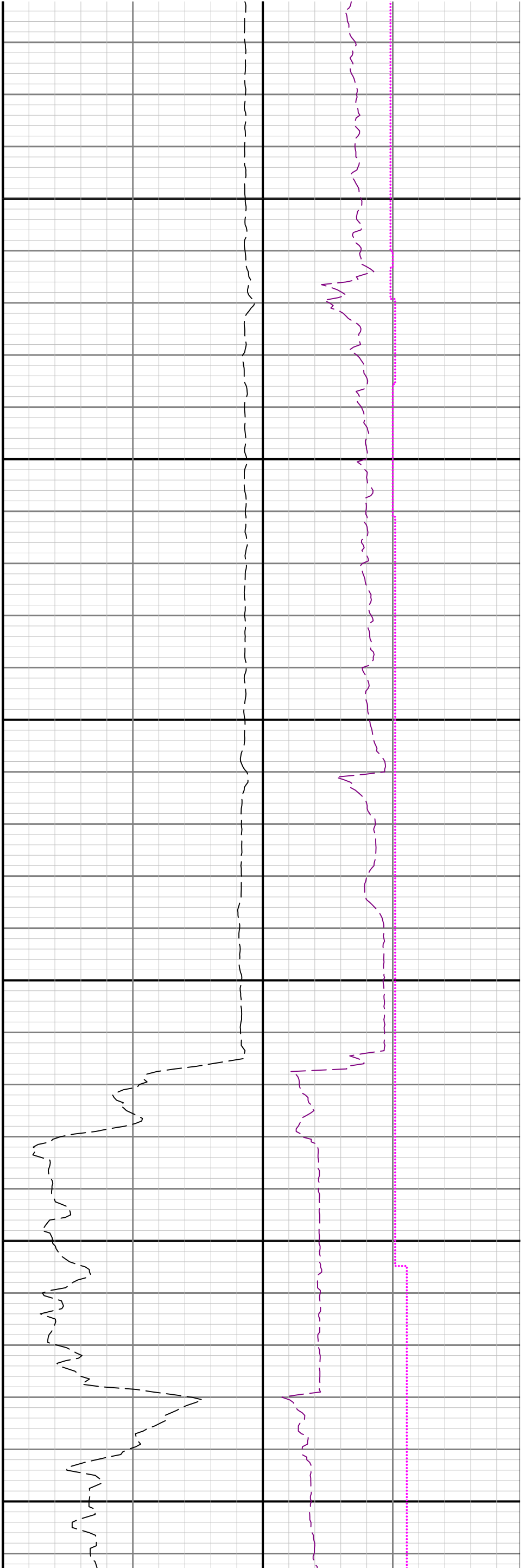


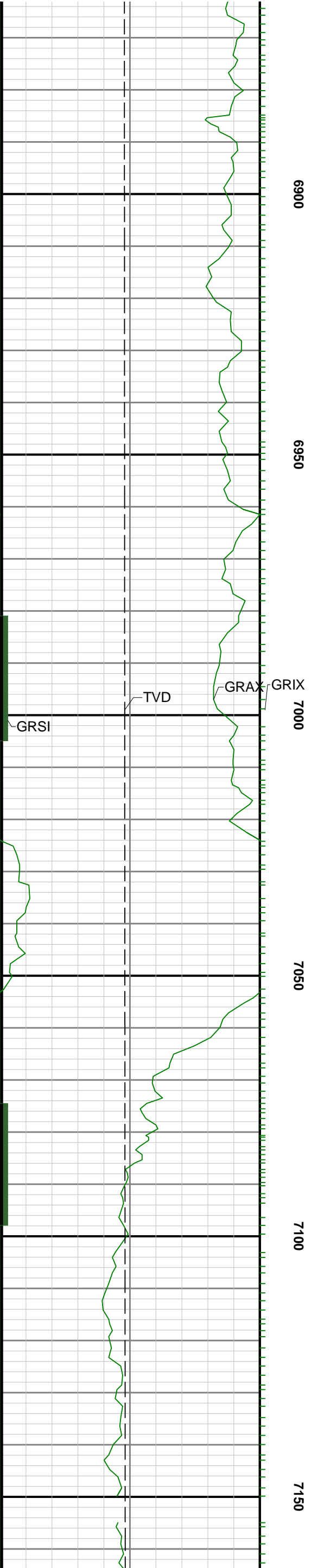
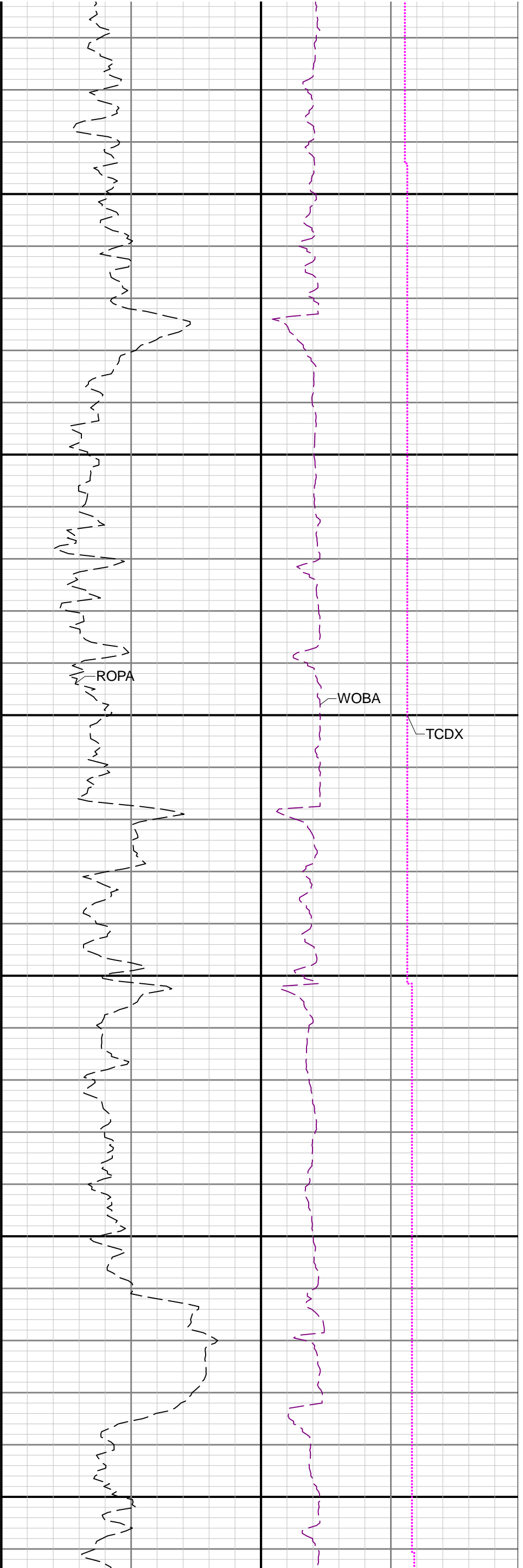


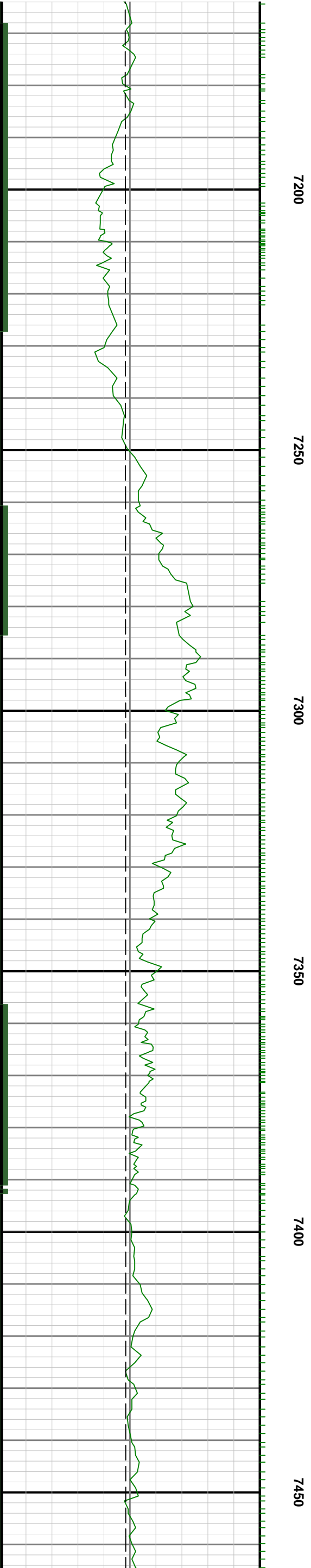
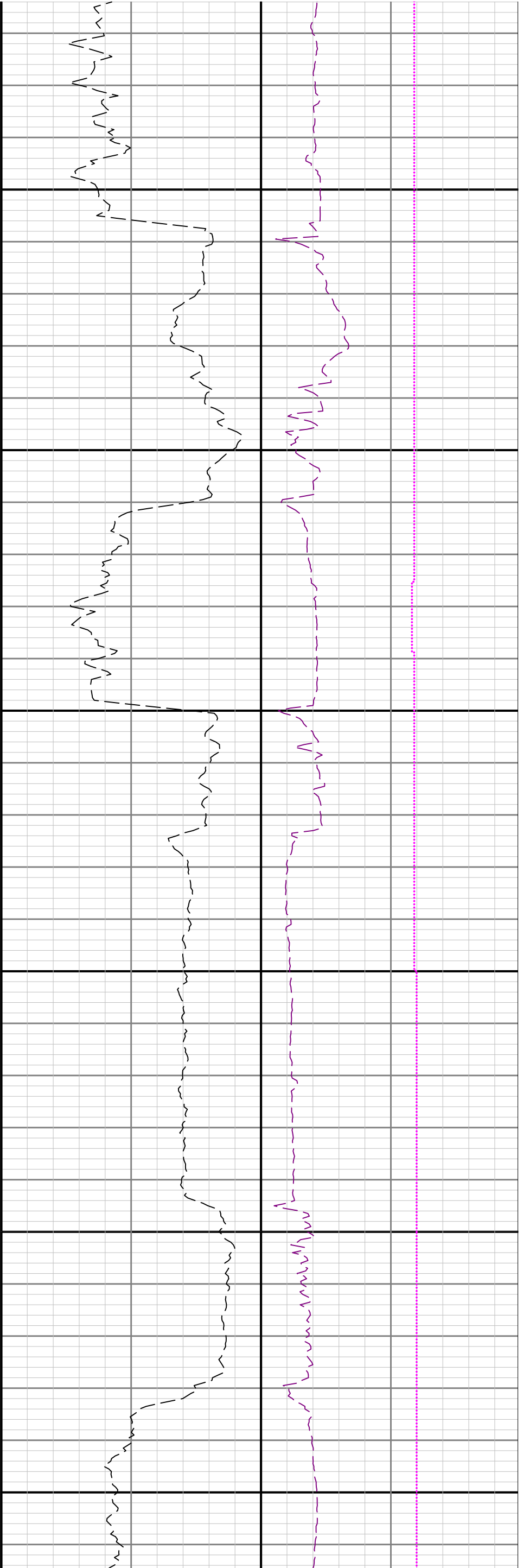


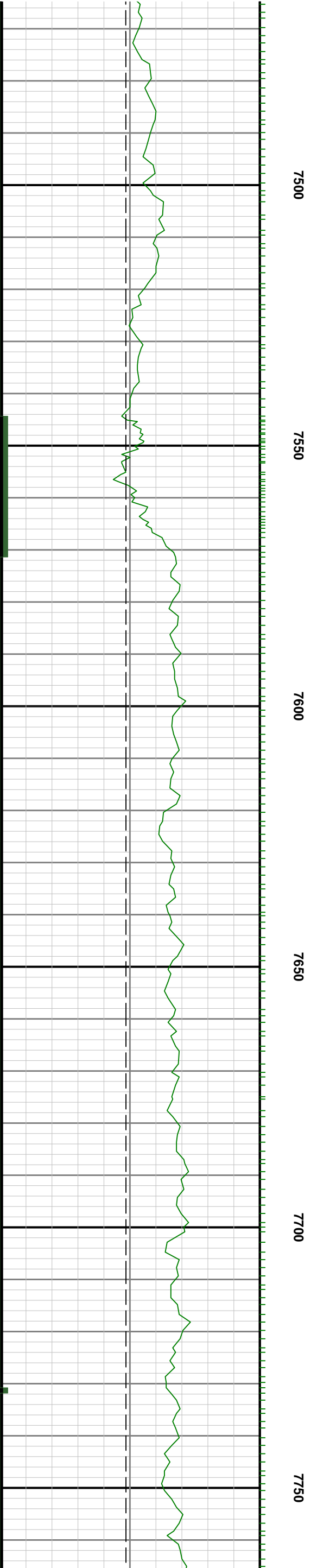
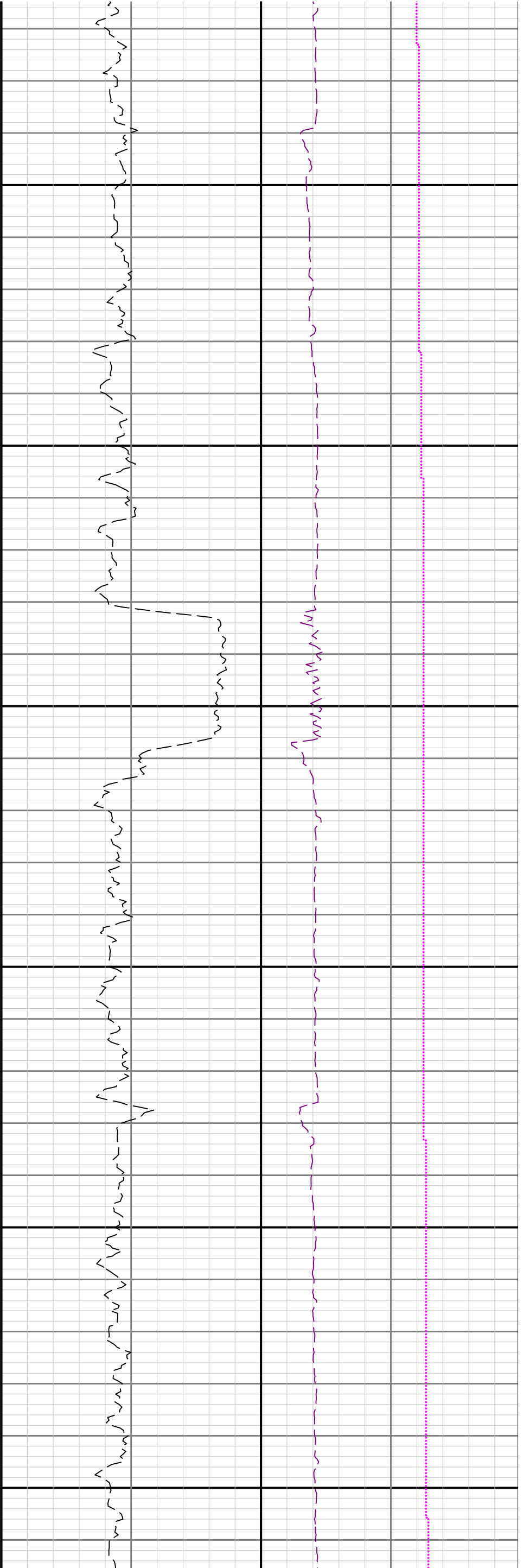


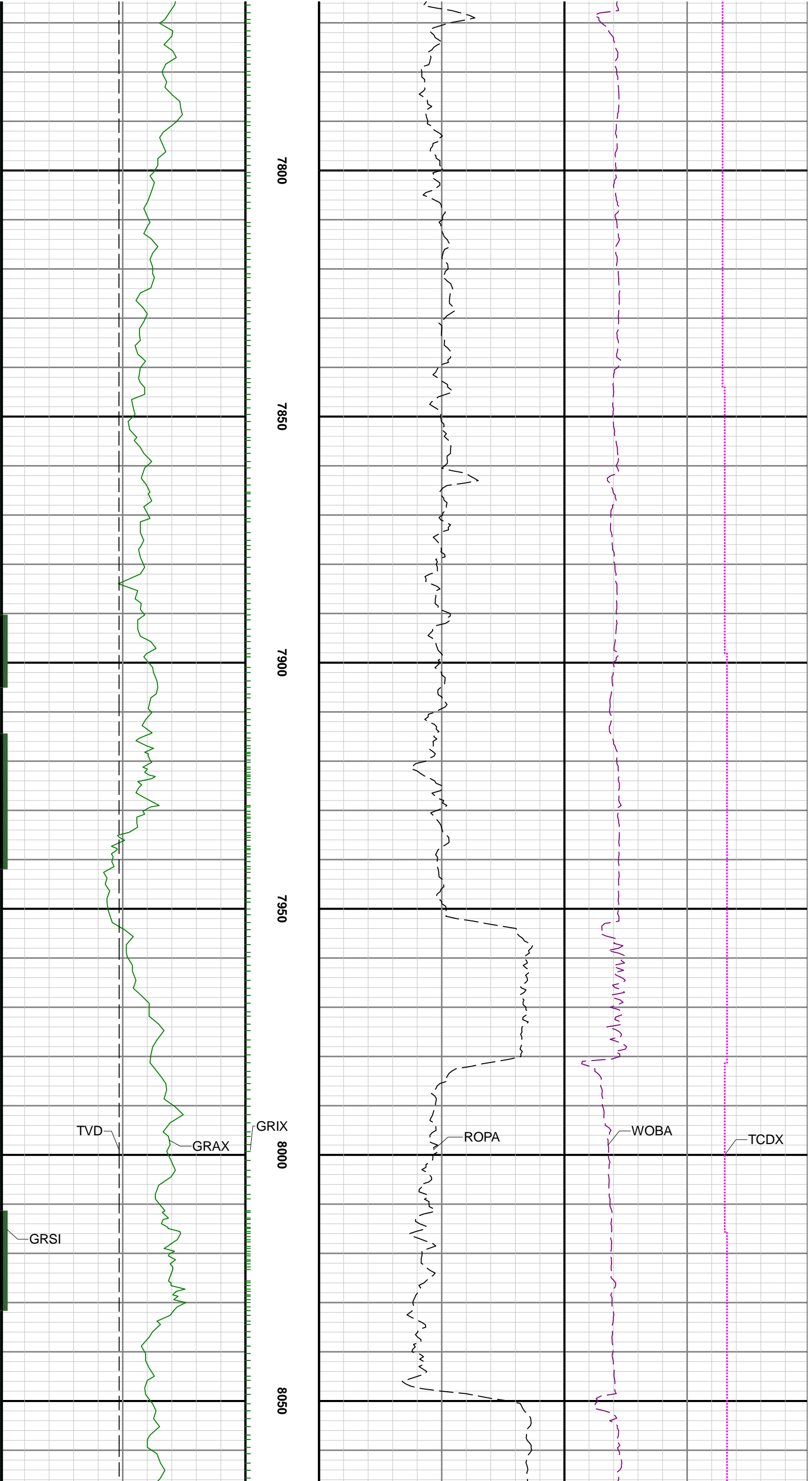


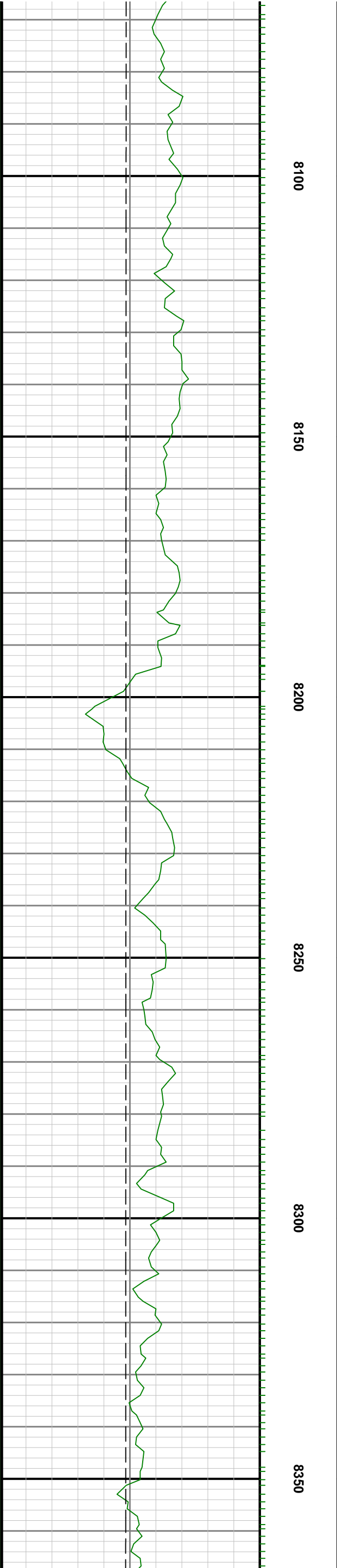
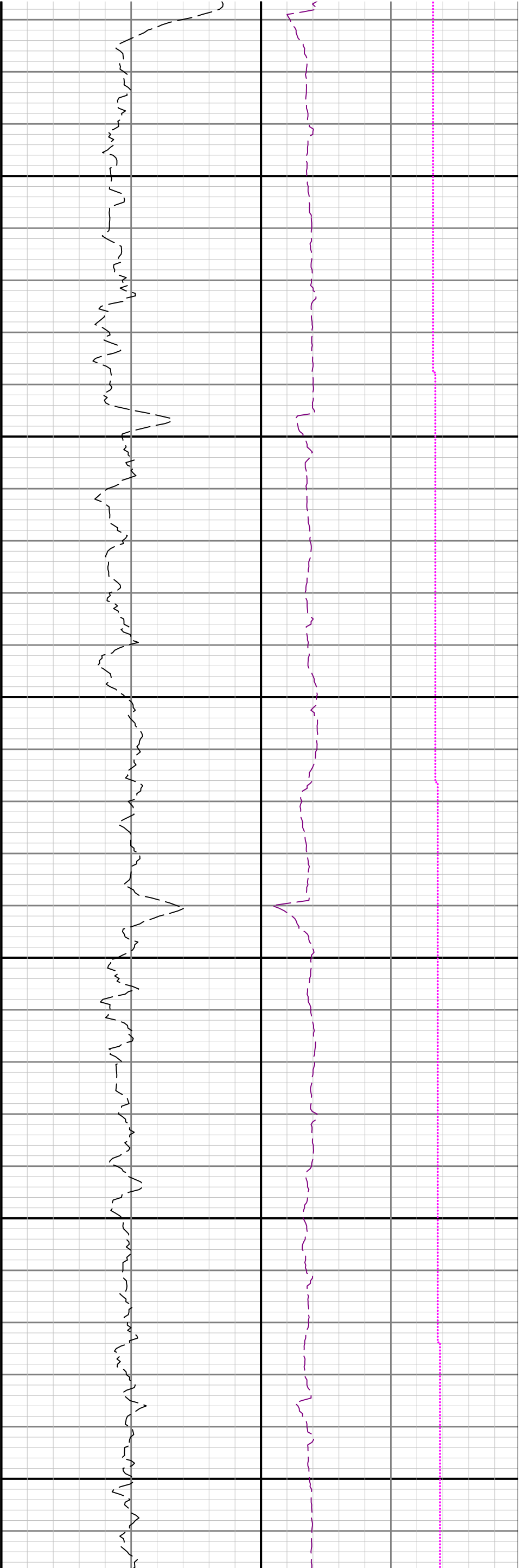


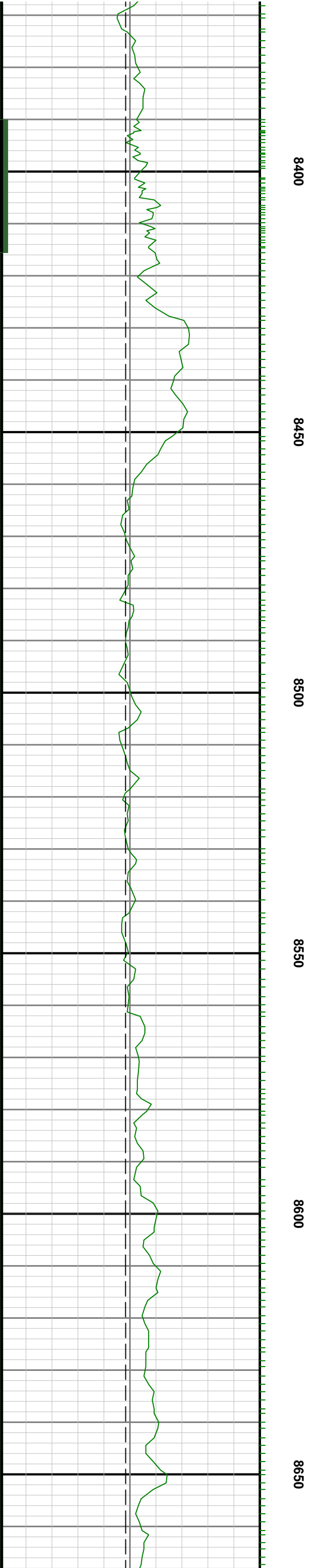


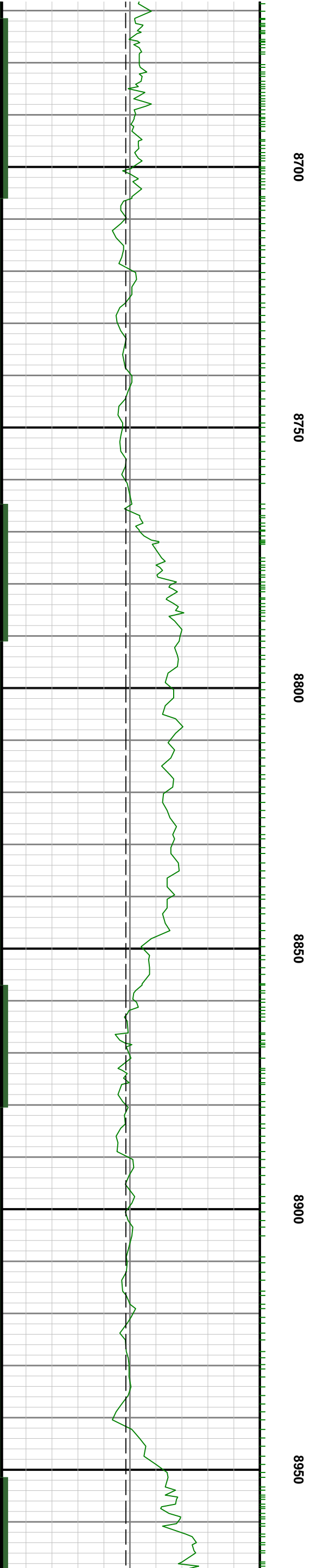
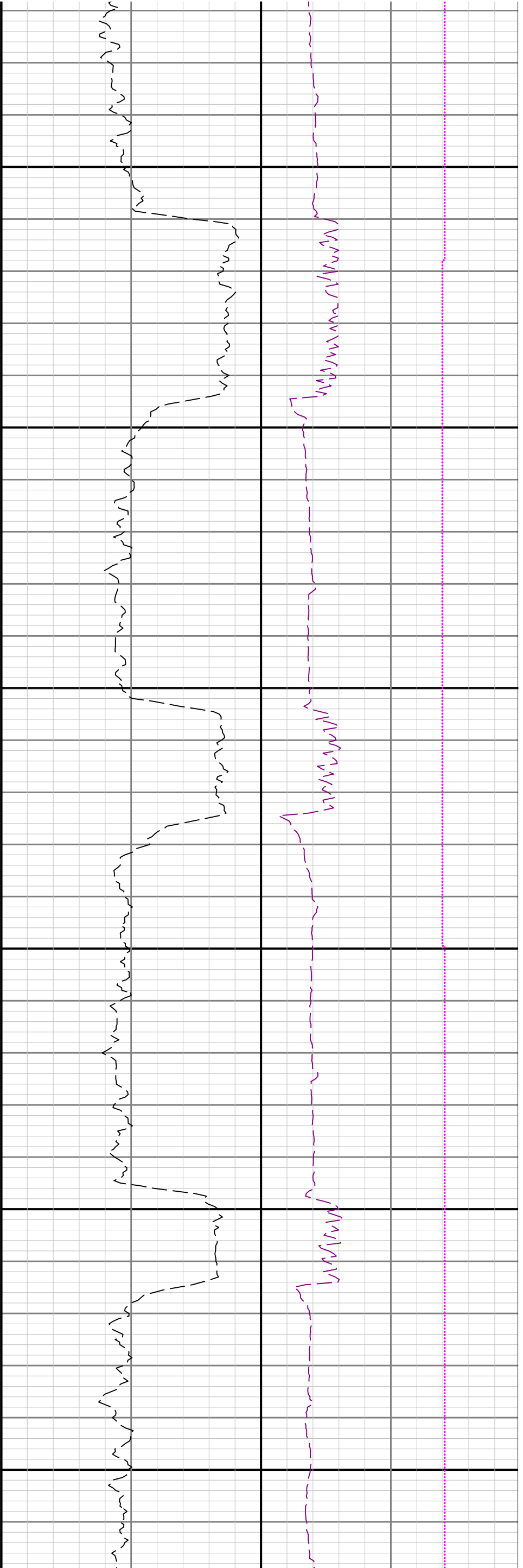


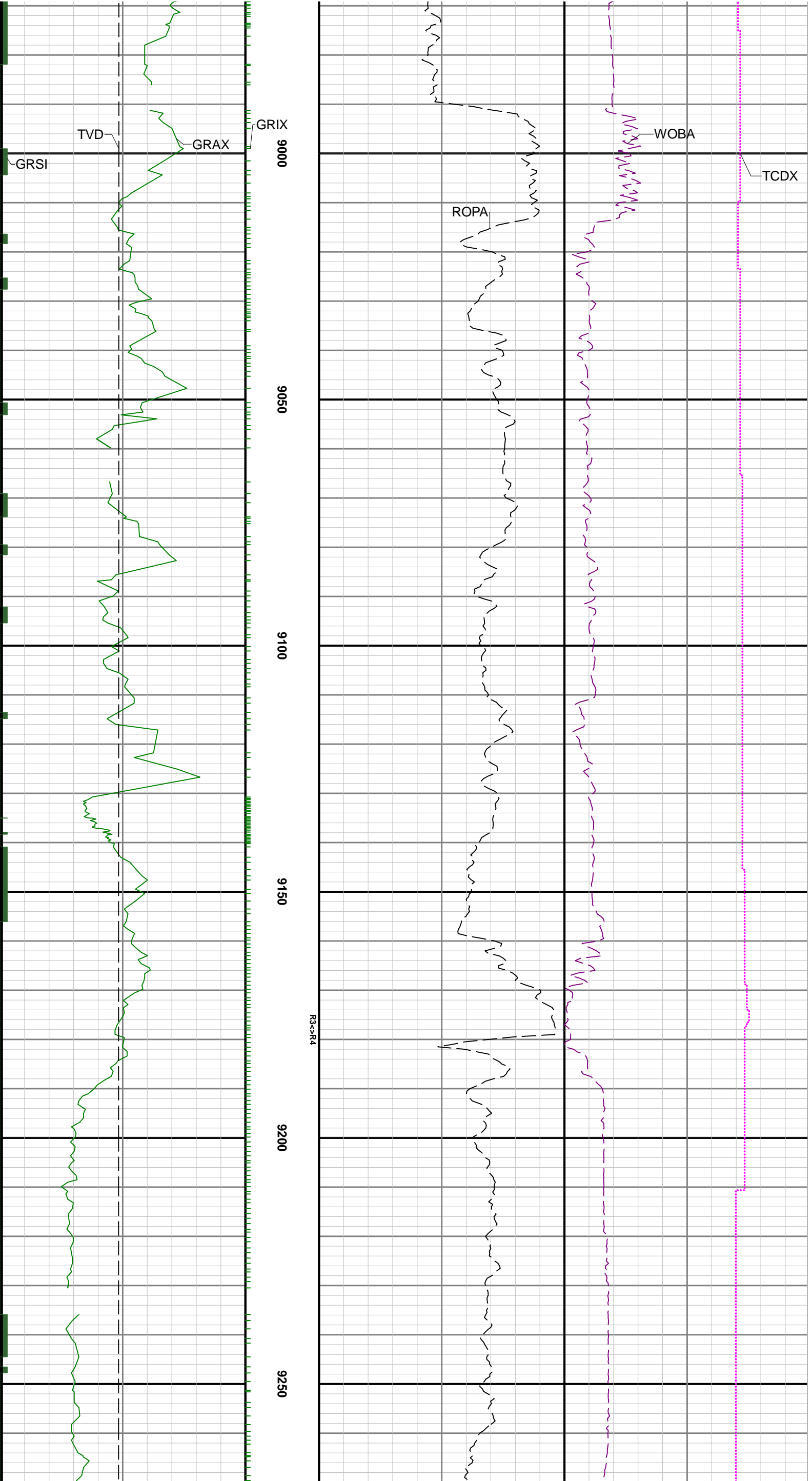


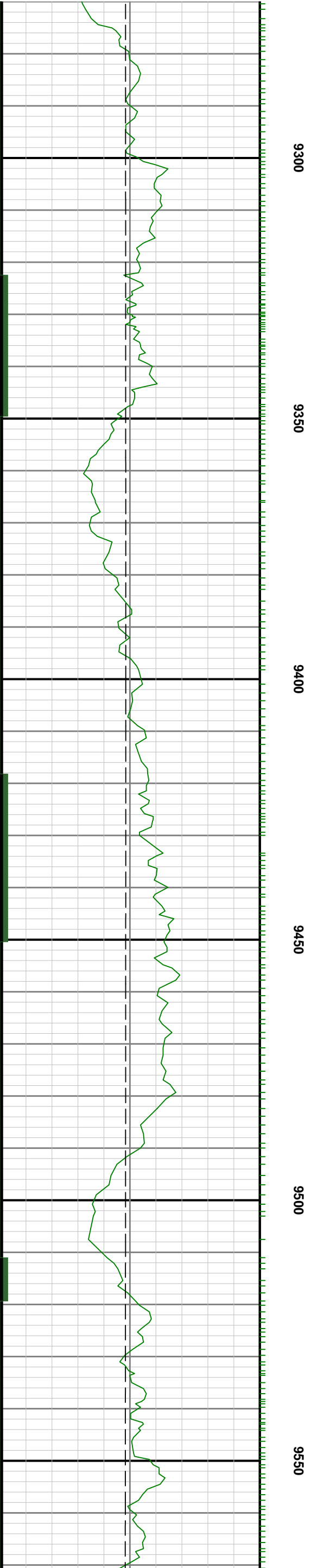
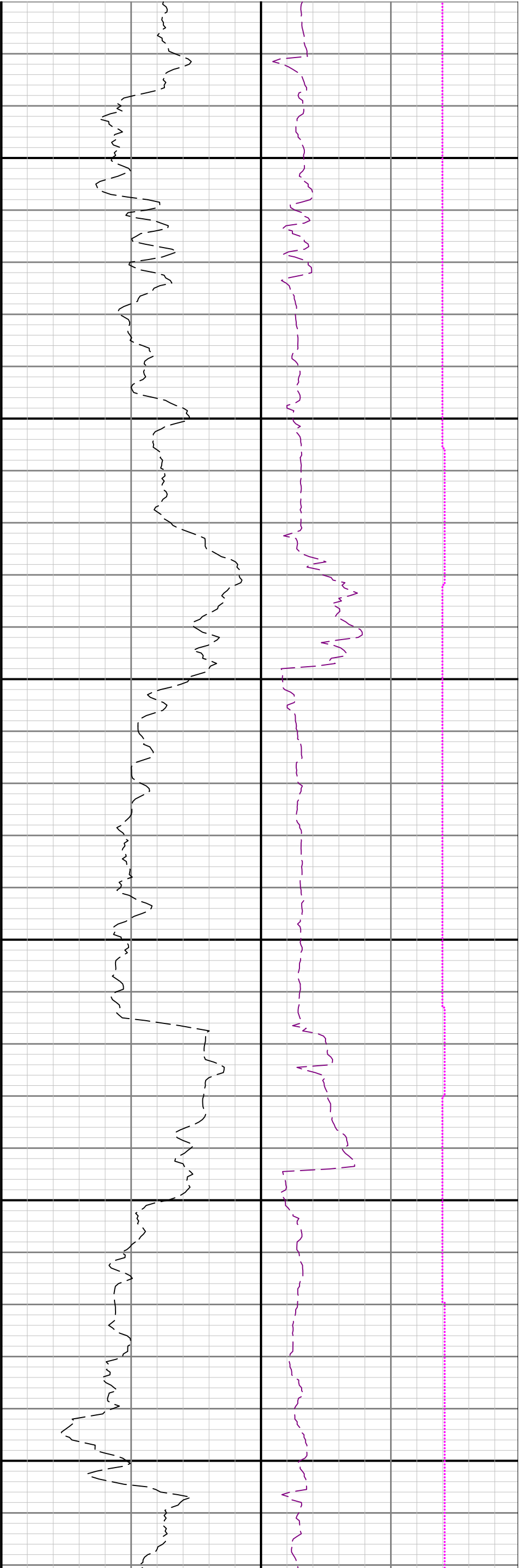


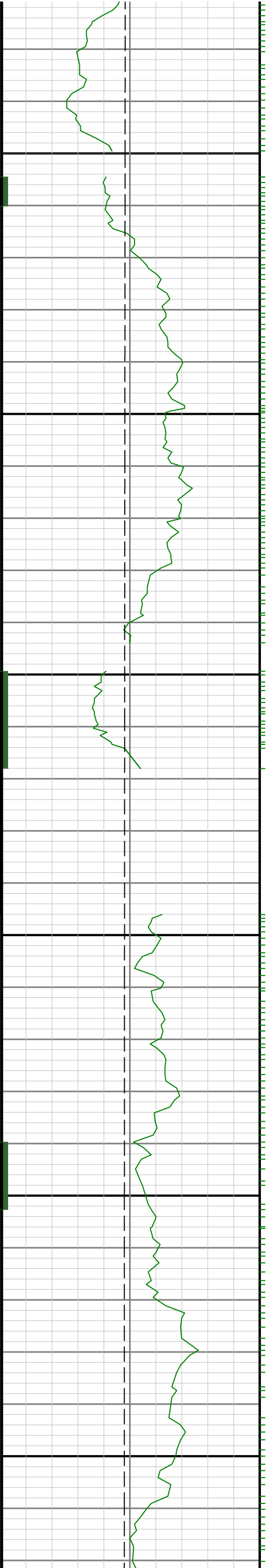












9600

9650

9700

9750

9800

9850

