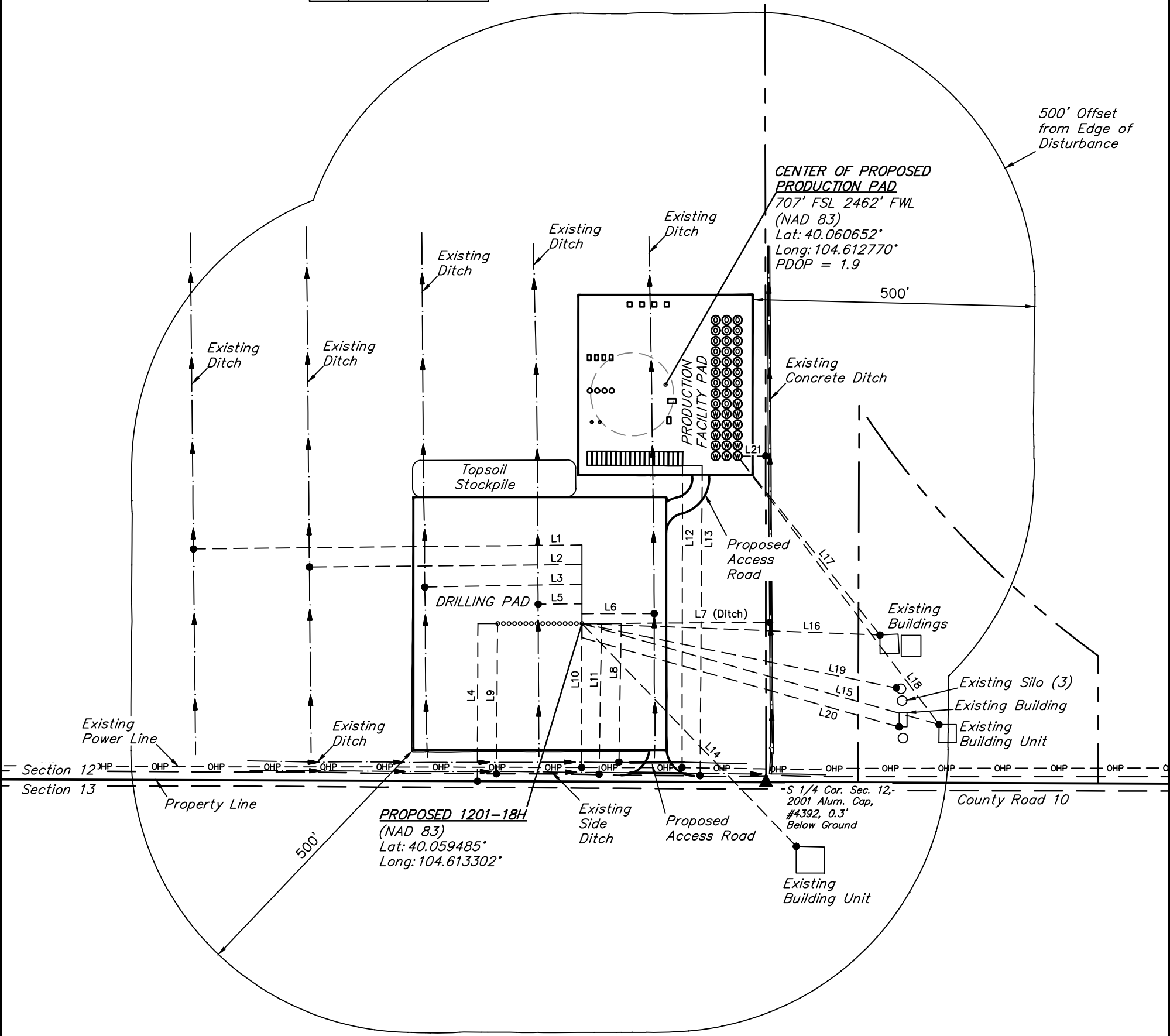


LINE TABLE			LINE TABLE		
LINE	DIRECTION	LENGTH	LINE	DIRECTION	LENGTH
L1	S89°W	690'	L12	SOUTH	537'
L2	S89°W	484'	L13	SOUTH	551'
L3	S89°W	278'	L14	S44°E	550'
L4	SOUTH	281'	L15	S74°E	660'
L5	WEST	78'	L16	S88°E	531'
L6	EAST	129'	L17	S39°E	399'
L7	EAST	334'	L18	S37°E	589'
L8	SOUTH	246'	L19	S78°E	571'
L9	SOUTH	267'	L20	S74°E	587'
L10	SOUTH	256'	L21	EAST	42'
L11	S01°W	268'			



NOTES:

- MLV Tank is temporary and is to be removed before production equipment is set.



UELS, LLC
Corporate Office * 85 South 200 East
Vernal, UT 84078 * (435) 789-1017

REV: 3 01-25-19 C.IVIE (ACCESS ROAD MOVE)

VERDAD RESOURCES LLC

WUERTZ 1201 PAD
SE 1/4 SW 1/4, SECTION 12, T1N, R65W, 6th P.M.
WELD COUNTY, COLORADO

SURVEYED BY	LOREN SHANKS	01-24-19	SCALE
DRAWN BY	K.B.	02-07-18	1" = 200'

LOCATION DRAWING

FIGURE #4