

T4S, R96W, 6th P.M.

LEGEND:

- └─┘ = 90° SYMBOL
- = SURFACE LOCATION.
- ◆ = TOP OF GAS INTERVAL.
- = TARGET BOTTOM HOLE.
- ▲ = SECTION CORNERS LOCATED. (NAD 83)

LINE TABLE		
LINE	DIRECTION	LENGTH
L1	S70°00'02"W	176.98'

1953 Brass Cap
0.7' High, Mound of
Stones, Steel Post
Lat: 39.680564°
Long: 108.164133°

1953 Brass Cap
0.5' High
Lat: 39.680561°
Long: 108.154725°

1953 Brass Cap
0.8' High, Steel
Post
Lat: 39.680583°
Long: 108.145383°

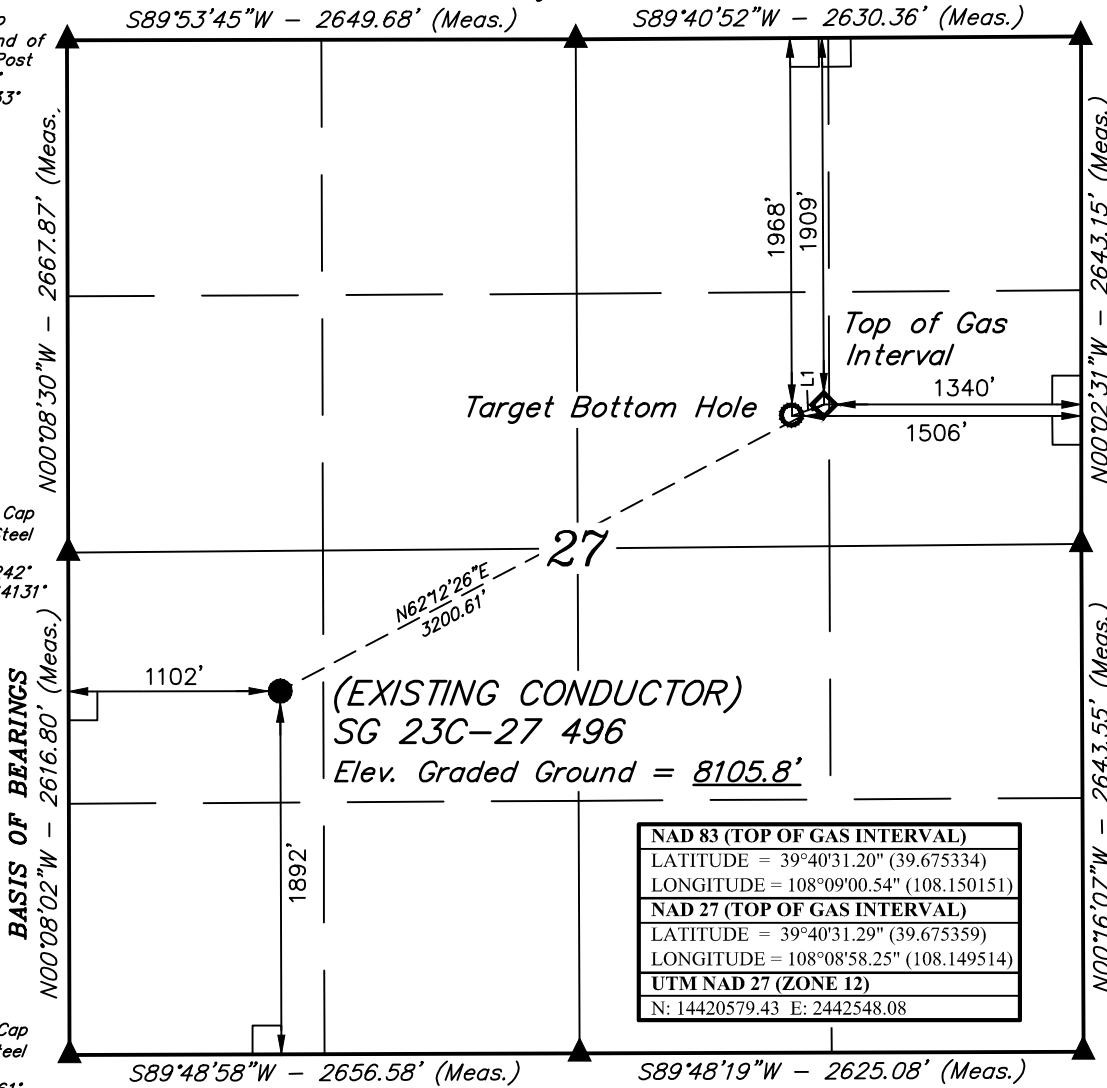
1953 Brass Cap
0.6' High, Steel
Post
Lat: 39.673242°
Long: 108.164131°

1953 Brass Cap
0.7' High, Steel
Post
Lat: 39.673331°
Long: 108.145397°

1953 Brass Cap
0.9' High, Steel
Post
Lat: 39.666061°
Long: 108.164131°

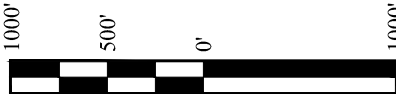
1953 Brass Cap
0.5' High, 5/8"
Rebar
Lat: 39.666069°
Long: 108.154697°

1953 Brass Cap
1.4' High, "T"
Post, 5/8" Rebar
Lat: 39.666077°
Long: 108.145376°



NAD 83 (TOP OF GAS INTERVAL)
LATITUDE = 39°40'31.20" (39.675334)
LONGITUDE = 108°09'00.54" (108.150151)
NAD 27 (TOP OF GAS INTERVAL)
LATITUDE = 39°40'31.29" (39.675359)
LONGITUDE = 108°08'58.25" (108.149514)
UTM NAD 27 (ZONE 12)
N: 14420579.43 E: 2442548.08

PDOP = 1.4



NAD 83 (SURFACE LOCATION)	NAD 83 (TARGET BOTTOM HOLE)
LATITUDE = 39°40'16.52" (39.671256)	LATITUDE = 39°40'30.61" (39.675169)
LONGITUDE = 108°09'36.78" (108.160217)	LONGITUDE = 108°09'02.67" (108.150742)
NAD 27 (SURFACE LOCATION)	NAD 27 (TARGET BOTTOM HOLE)
LATITUDE = 39°40'16.61" (39.671281)	LATITUDE = 39°40'30.70" (39.675194)
LONGITUDE = 108°09'34.49" (108.159580)	LONGITUDE = 108°09'00.38" (108.150106)
UTM NAD 27 (ZONE 12)	UTM NAD 27 (ZONE 12)
N: 14419004.42 E: 2439762.15	N: 14420514.03 E: 2442383.64

CERTIFICATE

THIS IS TO CERTIFY THAT THE ABOVE PLAN WAS PREPARED AND THE LOCATION AS SHOWN WAS STAKED ON THE GROUND FROM FIELD NOTES OF ACTUAL SURVEYS MADE BY ME OR UNDER MY SUPERVISION AND THAT THE SAME ARE TRUE AND CORRECT TO THE BEST OF MY KNOWLEDGE AND BELIEF.

Harold Marshall
 HAROLD MARSHALL
 REGISTERED LAND SURVEYOR
 REGISTRATION NO. 18180
 STATE OF COLORADO
 08-23-18

REV: 3 08-17-18 T.L.L. (ADD TOP OF GAS, SHL & BHL CHANGE)

BASIS OF BEARINGS

BEARINGS ARE A BASED ASSUMPTION THAT THE WEST LINE OF THE SOUTHWEST 1/4 OF SECTION 27 BEARS N00°08'02"W. MONUMENTS DESCRIBED HEREON.

BASIS OF ELEVATION

BENCH MARK (H79) LOCATED IN THE NE 1/4 OF SECTION 35, T4S, R98W, 6th P.M., TAKEN FROM THE BULL FORK, QUADRANGLE, COLORADO, 7.5 MINUTE QUAD. (TOPOGRAPHIC MAP) PUBLISHED BY THE UNITED STATES DEPARTMENT OF THE INTERIOR, GEOLOGICAL SURVEY. SAID ELEVATION IS MARKED AS BEING 8535 FEET.



Caerus Oil & Gas LLC

(EXISTING CONDUCTOR) SG 23C-27 496
 NW 1/4 SW 1/4, SECTION 27, T4S, R96W, 6th P.M.
 GARFIELD COUNTY, COLORADO

SURVEYED BY	DENNIS PETTY	06-05-18	SCALE
DRAWN BY	M.D.	09-27-12	1" = 1000'

WELL LOCATION PLAT



UELS, LLC
 Corporate Office * 85 South 200 East
 Vernal, UT 84078 * (435) 789-1017