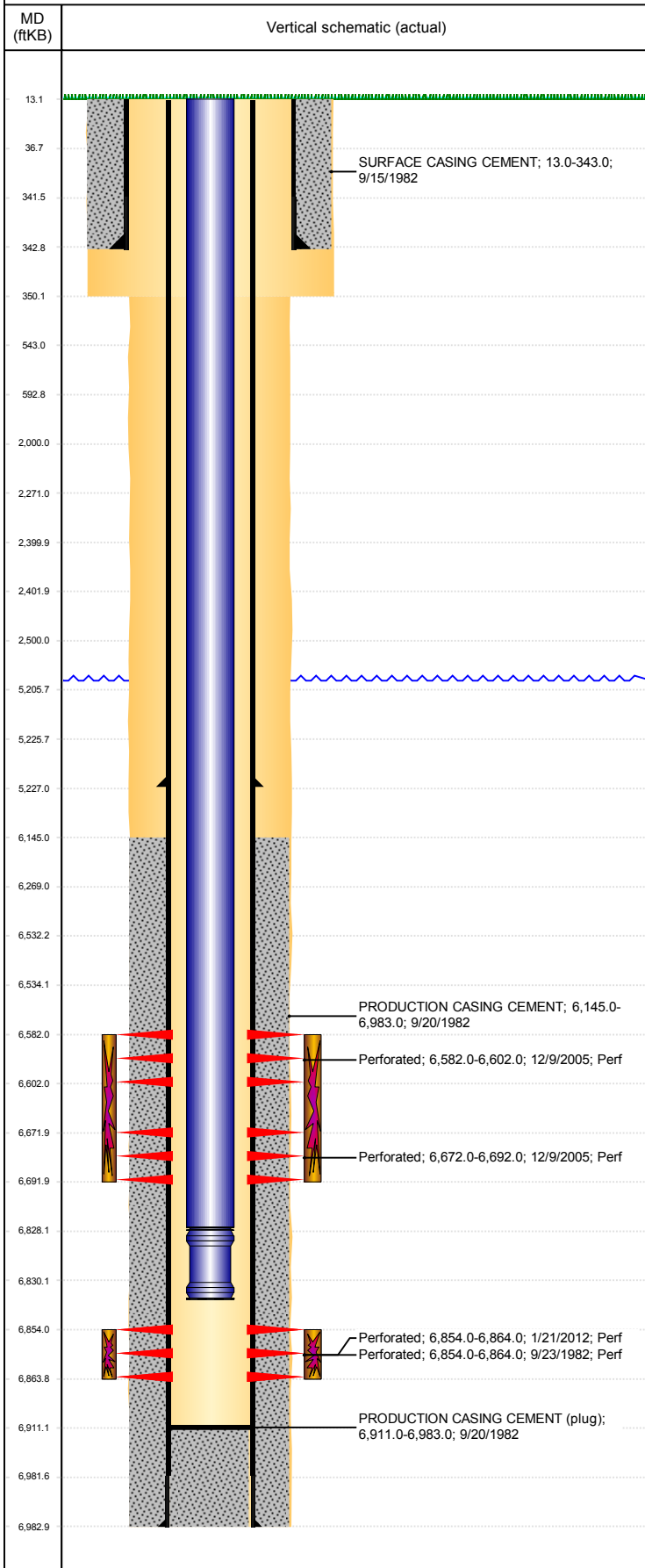


**Well Name: ECKHARDT 02**

VERTICAL, ORIGINAL HOLE, 1/28/2019 4:02:41 PM



Well Header									
API 05-123-10786		Business Unit DJ BASIN			District 15		Well Config VERTICAL		
KB - GL / MSL (ft... 13.00		Spud Date 9/15/1982		P & A Date		Well Production Status SI			SoRT No
Comment CSG RPR 12/05; PATCH @ 5226. CIBP @ 6830'. VERY SKETCHY FILE!!!!									
Surface Location (Congressional)									
Qtr 3 SE	Qtr 4 SW	Section 33	Twonshp 5	Twonsh... N	Range 64	Rng E/... W	Actual Latitude (°) 40.35036797	Actual Longitude (°) -104.55698444	
Wellbore Sections									
Section Des			Size (in)			Act Top, MD (ftKB)		Act Btm, MD (ftKB)	
SURFACE			12 1/4			13		350	
PRODUCTION			7 7/8			350		6,983	
Casing Strings									
Csg Des			Run Date	OD (in)	Wt/Len (lb/ft)	Grade	Top, MD (ftKB)	MD (ftKB)	
Surface			9/15/1982	8 5/8	24.00		13.0	343.0	
Production			12/8/2005	4 1/2	11.60	M-80	36.7	5,227.0	
Production			9/20/1982	4 1/2	11.60		13.0	6,983.0	
Cement									
Des					Start Date		Top (ftKB)		Btm (ftKB)
SURFACE CASING CEMENT					9/15/1982		13.0		343.0
PRODUCTION CASING CEMENT					9/20/1982		6,145.0		6,983.0
DUMP BAIL					12/3/2004		6,828.0		6,830.0
Zone Statuses									
Zone Name		Status Date	Status	Fluid Type	Job			Prod Method	
NIOBRARA		1/12/2006	PR	Gas	CASING REPAIR, 12/5/2005 06:00			Flowing	
NIOBRARA		4/16/2010	PR	Water					
CODELL		2/15/2012	PR	Gas	RE-FRAC, 1/19/2012 06:00				
CODELL		10/7/2016	SI						
Perforation Data									
Linked Zone			Bnch/Stg	Entered Shot Total	Top (ftKB)		Btm (ftKB)		Date
NIOBRARA, ORIGINAL HOLE				120	6,582.00		6,602.00		12/9/2005
NIOBRARA, ORIGINAL HOLE				120	6,672.00		6,692.00		12/9/2005
CODELL, ORIGINAL HOLE				21	6,854.00		6,864.00		9/23/1982
CODELL, ORIGINAL HOLE				40	6,854.00		6,864.00		1/21/2012
Stimulation Intervals									
Zone				Start Date		Top (ftKB)		Btm (ftKB)	
NIOBRARA, ORIGINAL HOLE				1/11/2006		6,582.0		6,692.0	
CODELL, ORIGINAL HOLE				9/25/1982		6,854.0		6,864.0	
CODELL, ORIGINAL HOLE				1/27/2012		6,854.0		6,864.0	
Other In Hole									
Run Date		Des				OD (in)	Top (ftKB)		Btm (ftKB)
Logs									
Date		Type					Top, MD (ftKB)		Btm, MD (ftKB)
9/20/1982		COMPENSATED DENSITY					343.0		6,964.0
9/20/1982		INDUCTION					343.0		6,964.0
9/21/1982		COMPLEX RESERVOIR ANALYSIS					6,550.0		6,950.0
9/23/1982		CBL/CCL/GR					6,100.0		6,908.0
9/9/2016		GYRO					0.0		6,750.0
Plug Back Total Depths									
Date		Type			Com				Depth (ftKB)
2/8/2012		FILL			SLICKLINE TAG.				6,871.0
2/9/2012		FILL			C/O WITH NC/SN.				6,911.0