

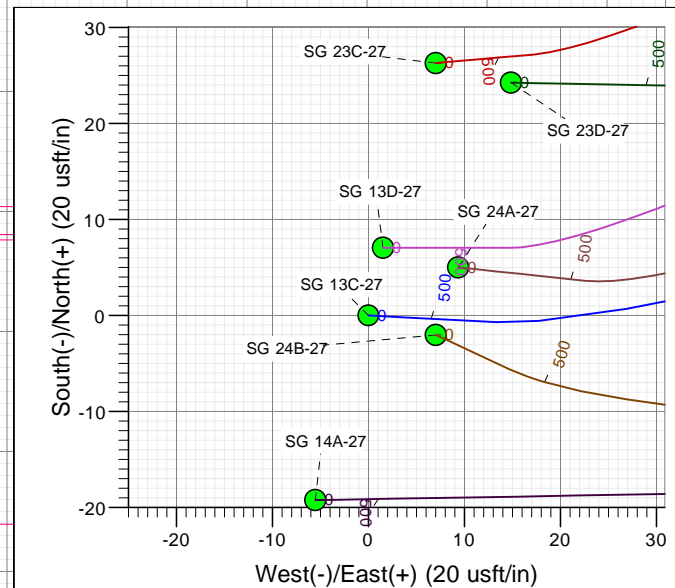
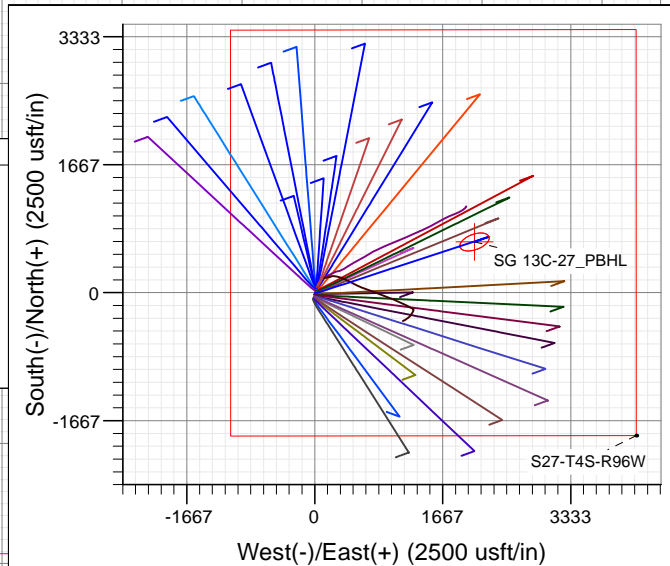
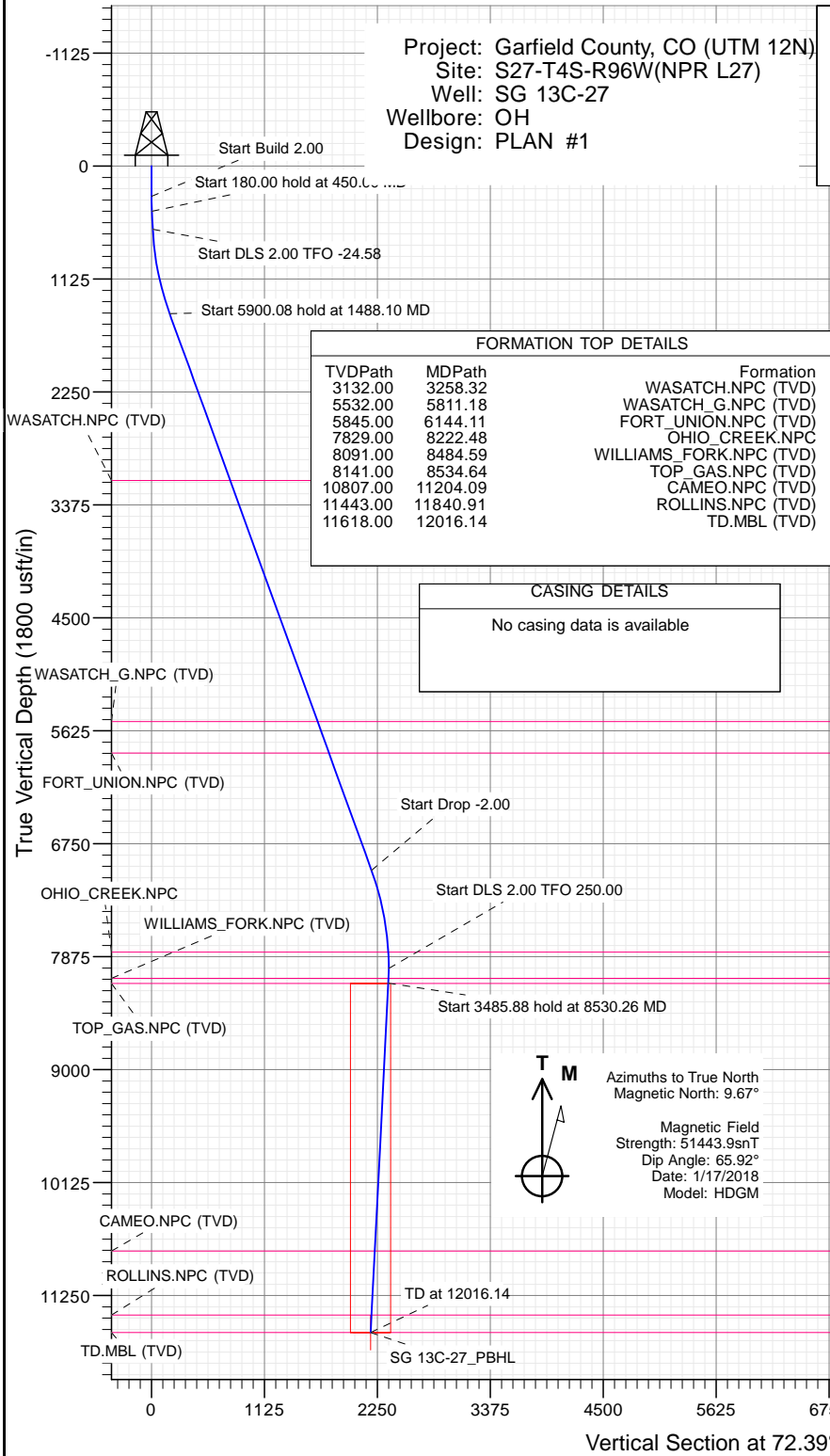


## SECTION DETAILS

Sec	MD	Inc	Azi	TVD	+N/-S	+E/-W	Dleg	TFace	VSect	Target
1	0.00	0.00	0.00	0.00	0.00	0.00	0.00	0.00	0.00	
2	300.00	0.00	0.00	300.00	0.00	0.00	0.00	0.00	0.00	
3	450.00	3.00	93.00	449.93	-0.21	3.92	2.00	93.00	3.67	
4	630.00	3.00	93.00	629.68	-0.70	13.33	0.00	0.00	12.49	
5	1488.10	19.93	71.89	1467.78	43.92	175.96	2.00	-24.58	181.00	
6	7388.17	19.93	71.89	7014.57	669.02	2087.31	0.00	0.00	2191.90	
7	8384.57	0.00	0.00	7991.00	722.34	2250.35	2.00	180.00	2363.43	
8	8530.26	2.91	250.00	8136.63	721.07	2246.87	2.00	250.00	2359.73	
9	12016.14	2.91	250.00	11618.00	660.47	2080.35	0.00	0.00	2182.68	SG 13C-27_PBHL

Project: Garfield County, CO (UTM 12N)  
Site: S27-T4S-R96W(NPR L27)  
Well: SG 13C-27  
Wellbore: OH  
Design: PLAN #1

PLAN #1									
SG 13C-27									
KB-30' @ 8136.00usft (Original Well Elev)									
Ground Level @ 8106.00									
NAD 1983 - Western US									
Well SG 13C-27 - Slot SG 13C-27, True North									
Type	Target	Azimuth	Origin Type	N/S	E/W	From TVD			
TD	No Target (Freehand)	72.39	Slot	0.00	0.00	0.00	Latitude	Longitude	
SG 13C-27_PBHL		11618.00	660.47	2080.35	39.673020	-108.152217			



## WELL DETAILS: SG 13C-27

		8106.00			
+N/-S	+E/-W	Northing	Easting	Latitude	Longitude
0.00	0.00	14418977.60	2439756.00	39.671208	-108.159605

SG 13C-27

CATHEDRAL

CATHEDRAL

# Cathedral Energy Services

## Planning Report

<b>Database:</b>	USA EDM 5000 Multi Users DB	<b>Local Co-ordinate Reference:</b>	Well SG 13C-27 - Slot SG 13C-27
<b>Company:</b>	Caerus Oil & Gas	<b>TVD Reference:</b>	KB=30' @ 8136.00usft (Original Well Elev)
<b>Project:</b>	Garfield County, CO (UTM 12N)	<b>MD Reference:</b>	KB=30' @ 8136.00usft (Original Well Elev)
<b>Site:</b>	S27-T4S-R96W(NPR L27)	<b>North Reference:</b>	True
<b>Well:</b>	SG 13C-27	<b>Survey Calculation Method:</b>	Minimum Curvature
<b>Wellbore:</b>	OH		
<b>Design:</b>	PLAN #1		

<b>Project</b>	Garfield County, CO (UTM 12N)		
<b>Map System:</b>	Universal Transverse Mercator (US Survey Feet)	<b>System Datum:</b>	Mean Sea Level
<b>Geo Datum:</b>	NAD 1927 - Western US		
<b>Map Zone:</b>	Zone 12N (114 W to 108 W)		

Site		S27-T4S-R96W(NPR L27)			
Site Position:		Northing:	14,419,012.30 usft	Latitude:	39.671302
From:	Map	Easting:	2,439,764.30 usft	Longitude:	-108.159572
Position Uncertainty:	0.00 usft	Slot Radius:	13-3/16"	Grid Convergence:	1.81 °

Well	SG 13C-27 - Slot SG 13C-27					
Well Position	+N/-S	0.00 usft	Northing:	14,418,977.60 usft	Latitude:	39.671208
	+E/-W	0.00 usft	Easting:	2,439,756.00 usft	Longitude:	-108.159605
Position Uncertainty		0.00 usft	Wellhead Elevation:	usft	Ground Level:	8,106.00 usft

<b>Wellbore</b>	OH				
<b>Magnetics</b>	<b>Model Name</b>	<b>Sample Date</b>	<b>Declination (°)</b>	<b>Dip Angle (°)</b>	<b>Field Strength (nT)</b>
	HDGM	1/17/2018	9.67	65.92	51,443.90000000

<b>Design</b>	PLAN #1			
<b>Audit Notes:</b>				
<b>Version:</b>	<b>Phase:</b>	PLAN	<b>Tie On Depth:</b>	0.00
<b>Vertical Section:</b>	<b>Depth From (TVD) (usft)</b>	<b>+N/-S (usft)</b>	<b>+E/-W (usft)</b>	<b>Direction (°)</b>
	0.00	0.00	0.00	72.39

<b>Plan Sections</b>										
Measured Depth (usft)	Inclination (°)	Azimuth (°)	Vertical Depth (usft)	+N/-S (usft)	+E/-W (usft)	Dogleg Rate (°/100usft)	Build Rate (°/100usft)	Turn Rate (°/100usft)	TFO (°)	Target
0.00	0.00	0.00	0.00	0.00	0.00	0.00	0.00	0.00	0.00	
300.00	0.00	0.00	300.00	0.00	0.00	0.00	0.00	0.00	0.00	
450.00	3.00	93.00	449.93	-0.21	3.92	2.00	2.00	0.00	93.00	
630.00	3.00	93.00	629.68	-0.70	13.33	0.00	0.00	0.00	0.00	
1,488.10	19.93	71.89	1,467.78	43.92	175.96	2.00	1.97	-2.46	-24.58	
7,388.17	19.93	71.89	7,014.57	669.02	2,087.31	0.00	0.00	0.00	0.00	
8,384.57	0.00	0.00	7,991.00	722.34	2,250.35	2.00	-2.00	0.00	180.00	
8,530.26	2.91	250.00	8,136.63	721.07	2,246.87	2.00	2.00	-75.50	250.00	
12,016.14	2.91	250.00	11,618.00	660.47	2,080.35	0.00	0.00	0.00	0.00	SG 13C-27_PBHL

# Cathedral Energy Services

## Planning Report

<b>Database:</b>	USA EDM 5000 Multi Users DB	<b>Local Co-ordinate Reference:</b>	Well SG 13C-27 - Slot SG 13C-27
<b>Company:</b>	Caerus Oil & Gas	<b>TVD Reference:</b>	KB=30' @ 8136.00usft (Original Well Elev)
<b>Project:</b>	Garfield County, CO (UTM 12N)	<b>MD Reference:</b>	KB=30' @ 8136.00usft (Original Well Elev)
<b>Site:</b>	S27-T4S-R96W(NPR L27)	<b>North Reference:</b>	True
<b>Well:</b>	SG 13C-27	<b>Survey Calculation Method:</b>	Minimum Curvature
<b>Wellbore:</b>	OH		
<b>Design:</b>	PLAN #1		

Planned Survey									
Measured Depth (usft)	Inclination (°)	Azimuth (°)	Vertical Depth (usft)	+N/-S (usft)	+E/-W (usft)	Vertical Section (usft)	Dogleg Rate (°/100usft)	Build Rate (°/100u)	Comments / Formations
0.00	0.00	0.00	0.00	0.00	0.00	0.00	0.00	0.00	
100.00	0.00	0.00	100.00	0.00	0.00	0.00	0.00	0.00	
200.00	0.00	0.00	200.00	0.00	0.00	0.00	0.00	0.00	
300.00	0.00	0.00	300.00	0.00	0.00	0.00	0.00	0.00	Start Build 2.00
400.00	2.00	93.00	399.98	-0.09	1.74	1.63	2.00	2.00	
450.00	3.00	93.00	449.93	-0.21	3.92	3.67	2.00	2.00	Start 180.00 hold at 450.00 MD
500.00	3.00	93.00	499.86	-0.34	6.53	6.12	0.00	0.00	
600.00	3.00	93.00	599.73	-0.62	11.76	11.02	0.00	0.00	
630.00	3.00	93.00	629.68	-0.70	13.33	12.49	0.00	0.00	Start DLS 2.00 TFO -24.58
700.00	4.31	85.23	699.54	-0.58	17.78	16.77	2.00	1.88	
800.00	6.25	79.91	799.11	0.69	26.89	25.84	2.00	1.94	
900.00	8.22	77.11	898.31	3.24	39.23	38.37	2.00	1.97	
1,000.00	10.20	75.40	997.02	7.07	54.77	54.34	2.00	1.98	
1,100.00	12.19	74.23	1,095.11	12.17	73.51	73.74	2.00	1.99	
1,200.00	14.18	73.39	1,192.47	18.55	95.41	96.55	2.00	1.99	
1,300.00	16.18	72.75	1,288.97	26.18	120.45	122.73	2.00	1.99	
1,400.00	18.17	72.25	1,384.51	35.06	148.61	152.25	2.00	1.99	
1,488.10	19.93	71.89	1,467.78	43.92	175.96	181.00	2.00	2.00	Start 5900.08 hold at 1488.10 MD
1,500.00	19.93	71.89	1,478.97	45.18	179.82	185.06	0.00	0.00	
1,600.00	19.93	71.89	1,572.98	55.77	212.21	219.14	0.00	0.00	
1,700.00	19.93	71.89	1,666.99	66.37	244.61	253.22	0.00	0.00	
1,800.00	19.93	71.89	1,761.01	76.96	277.00	287.31	0.00	0.00	
1,900.00	19.93	71.89	1,855.02	87.56	309.40	321.39	0.00	0.00	
2,000.00	19.93	71.89	1,949.03	98.15	341.79	355.47	0.00	0.00	
2,100.00	19.93	71.89	2,043.04	108.75	374.19	389.55	0.00	0.00	
2,200.00	19.93	71.89	2,137.05	119.34	406.58	423.64	0.00	0.00	
2,300.00	19.93	71.89	2,231.07	129.94	438.98	457.72	0.00	0.00	
2,400.00	19.93	71.89	2,325.08	140.53	471.38	491.80	0.00	0.00	
2,500.00	19.93	71.89	2,419.09	151.13	503.77	525.88	0.00	0.00	
2,600.00	19.93	71.89	2,513.10	161.72	536.17	559.97	0.00	0.00	
2,700.00	19.93	71.89	2,607.12	172.32	568.56	594.05	0.00	0.00	
2,800.00	19.93	71.89	2,701.13	182.91	600.96	628.13	0.00	0.00	
2,900.00	19.93	71.89	2,795.14	193.51	633.35	662.21	0.00	0.00	
3,000.00	19.93	71.89	2,889.15	204.10	665.75	696.30	0.00	0.00	
3,100.00	19.93	71.89	2,983.16	214.70	698.14	730.38	0.00	0.00	
3,200.00	19.93	71.89	3,077.18	225.29	730.54	764.46	0.00	0.00	
3,258.32	19.93	71.89	3,132.00	231.47	749.43	784.34	0.00	0.00	WASATCH.NPC (TVD)
3,300.00	19.93	71.89	3,171.19	235.88	762.93	798.54	0.00	0.00	
3,400.00	19.93	71.89	3,265.20	246.48	795.33	832.63	0.00	0.00	
3,500.00	19.93	71.89	3,359.21	257.07	827.72	866.71	0.00	0.00	
3,600.00	19.93	71.89	3,453.23	267.67	860.12	900.79	0.00	0.00	
3,700.00	19.93	71.89	3,547.24	278.26	892.51	934.87	0.00	0.00	
3,800.00	19.93	71.89	3,641.25	288.86	924.91	968.96	0.00	0.00	
3,900.00	19.93	71.89	3,735.26	299.45	957.31	1,003.04	0.00	0.00	
4,000.00	19.93	71.89	3,829.27	310.05	989.70	1,037.12	0.00	0.00	
4,100.00	19.93	71.89	3,923.29	320.64	1,022.10	1,071.20	0.00	0.00	
4,200.00	19.93	71.89	4,017.30	331.24	1,054.49	1,105.29	0.00	0.00	
4,300.00	19.93	71.89	4,111.31	341.83	1,086.89	1,139.37	0.00	0.00	
4,400.00	19.93	71.89	4,205.32	352.43	1,119.28	1,173.45	0.00	0.00	
4,500.00	19.93	71.89	4,299.34	363.02	1,151.68	1,207.53	0.00	0.00	
4,600.00	19.93	71.89	4,393.35	373.62	1,184.07	1,241.62	0.00	0.00	
4,700.00	19.93	71.89	4,487.36	384.21	1,216.47	1,275.70	0.00	0.00	

# Cathedral Energy Services

## Planning Report

<b>Database:</b>	USA EDM 5000 Multi Users DB	<b>Local Co-ordinate Reference:</b>	Well SG 13C-27 - Slot SG 13C-27
<b>Company:</b>	Caerus Oil & Gas	<b>TVD Reference:</b>	KB=30' @ 8136.00usft (Original Well Elev)
<b>Project:</b>	Garfield County, CO (UTM 12N)	<b>MD Reference:</b>	KB=30' @ 8136.00usft (Original Well Elev)
<b>Site:</b>	S27-T4S-R96W(NPR L27)	<b>North Reference:</b>	True
<b>Well:</b>	SG 13C-27	<b>Survey Calculation Method:</b>	Minimum Curvature
<b>Wellbore:</b>	OH		
<b>Design:</b>	PLAN #1		

Planned Survey									
Measured Depth (usft)	Inclination (°)	Azimuth (°)	Vertical Depth (usft)	+N/-S (usft)	+E/-W (usft)	Vertical Section (usft)	Dogleg Rate (°/100usft)	Build Rate (°/100u)	Comments / Formations
4,800.00	19.93	71.89	4,581.37	394.81	1,248.86	1,309.78	0.00	0.00	
4,900.00	19.93	71.89	4,675.38	405.40	1,281.26	1,343.86	0.00	0.00	
5,000.00	19.93	71.89	4,769.40	416.00	1,313.65	1,377.95	0.00	0.00	
5,100.00	19.93	71.89	4,863.41	426.59	1,346.05	1,412.03	0.00	0.00	
5,200.00	19.93	71.89	4,957.42	437.19	1,378.44	1,446.11	0.00	0.00	
5,300.00	19.93	71.89	5,051.43	447.78	1,410.84	1,480.19	0.00	0.00	
5,400.00	19.93	71.89	5,145.44	458.38	1,443.23	1,514.28	0.00	0.00	
5,500.00	19.93	71.89	5,239.46	468.97	1,475.63	1,548.36	0.00	0.00	
5,600.00	19.93	71.89	5,333.47	479.56	1,508.03	1,582.44	0.00	0.00	
5,700.00	19.93	71.89	5,427.48	490.16	1,540.42	1,616.52	0.00	0.00	
5,800.00	19.93	71.89	5,521.49	500.75	1,572.82	1,650.61	0.00	0.00	
5,811.18	19.93	71.89	5,532.00	501.94	1,576.44	1,654.42	0.00	0.00	WASATCH_G.NPC (TVD)
5,900.00	19.93	71.89	5,615.51	511.35	1,605.21	1,684.69	0.00	0.00	
6,000.00	19.93	71.89	5,709.52	521.94	1,637.61	1,718.77	0.00	0.00	
6,100.00	19.93	71.89	5,803.53	532.54	1,670.00	1,752.85	0.00	0.00	
6,144.11	19.93	71.89	5,845.00	537.21	1,684.29	1,767.89	0.00	0.00	FORT_UNION.NPC (TVD)
6,200.00	19.93	71.89	5,897.54	543.13	1,702.40	1,786.94	0.00	0.00	
6,300.00	19.93	71.89	5,991.55	553.73	1,734.79	1,821.02	0.00	0.00	
6,400.00	19.93	71.89	6,085.57	564.32	1,767.19	1,855.10	0.00	0.00	
6,500.00	19.93	71.89	6,179.58	574.92	1,799.58	1,889.18	0.00	0.00	
6,600.00	19.93	71.89	6,273.59	585.51	1,831.98	1,923.27	0.00	0.00	
6,700.00	19.93	71.89	6,367.60	596.11	1,864.37	1,957.35	0.00	0.00	
6,800.00	19.93	71.89	6,461.62	606.70	1,896.77	1,991.43	0.00	0.00	
6,900.00	19.93	71.89	6,555.63	617.30	1,929.16	2,025.51	0.00	0.00	
7,000.00	19.93	71.89	6,649.64	627.89	1,961.56	2,059.60	0.00	0.00	
7,100.00	19.93	71.89	6,743.65	638.49	1,993.96	2,093.68	0.00	0.00	
7,200.00	19.93	71.89	6,837.66	649.08	2,026.35	2,127.76	0.00	0.00	
7,300.00	19.93	71.89	6,931.68	659.68	2,058.75	2,161.85	0.00	0.00	
7,388.17	19.93	71.89	7,014.57	669.02	2,087.31	2,191.90	0.00	0.00	Start Drop -2.00
7,400.00	19.69	71.89	7,025.70	670.26	2,091.12	2,195.90	2.00	-2.00	
7,500.00	17.69	71.89	7,120.42	680.23	2,121.58	2,227.95	2.00	-2.00	
7,600.00	15.69	71.89	7,216.20	689.15	2,148.87	2,256.67	2.00	-2.00	
7,700.00	13.69	71.89	7,312.93	697.04	2,172.98	2,282.03	2.00	-2.00	
7,800.00	11.69	71.89	7,410.48	703.86	2,193.86	2,304.00	2.00	-2.00	
7,900.00	9.69	71.89	7,508.74	709.63	2,211.49	2,322.55	2.00	-2.00	
8,000.00	7.69	71.89	7,607.58	714.33	2,225.85	2,337.66	2.00	-2.00	
8,100.00	5.69	71.89	7,706.90	717.95	2,236.93	2,349.31	2.00	-2.00	
8,200.00	3.69	71.89	7,806.56	720.49	2,244.70	2,357.48	2.00	-2.00	
8,222.48	3.24	71.89	7,829.00	720.92	2,245.99	2,358.84	2.00	-2.00	OHIO_CREEK.NPC
8,300.00	1.69	71.89	7,906.44	721.95	2,249.16	2,362.18	2.00	-2.00	
8,384.57	0.00	0.00	7,991.00	722.34	2,250.35	2,363.43	2.00	-2.00	Start DLS 2.00 TFO 250.00
8,400.00	0.31	250.00	8,006.43	722.33	2,250.31	2,363.39	2.00	2.00	
8,484.59	2.00	250.00	8,091.00	721.74	2,248.71	2,361.68	2.00	2.00	WILLIAMS_FORK.NPC (TVD)
8,500.00	2.31	250.00	8,106.40	721.54	2,248.17	2,361.11	2.00	2.00	
8,530.26	2.91	250.00	8,136.63	721.07	2,246.87	2,359.73	2.00	2.00	Start 3485.88 hold at 8530.26 MD
8,534.64	2.91	250.00	8,141.00	721.00	2,246.66	2,359.51	0.00	0.00	TOP_GAS.NPC (TVD)
8,600.00	2.91	250.00	8,206.28	719.86	2,243.54	2,356.19	0.00	0.00	
8,700.00	2.91	250.00	8,306.15	718.12	2,238.76	2,351.11	0.00	0.00	
8,800.00	2.91	250.00	8,406.02	716.38	2,233.98	2,346.03	0.00	0.00	
8,900.00	2.91	250.00	8,505.89	714.65	2,229.21	2,340.95	0.00	0.00	
9,000.00	2.91	250.00	8,605.76	712.91	2,224.43	2,335.87	0.00	0.00	
9,100.00	2.91	250.00	8,705.63	711.17	2,219.65	2,330.79	0.00	0.00	

# Cathedral Energy Services

## Planning Report

<b>Database:</b>	USA EDM 5000 Multi Users DB	<b>Local Co-ordinate Reference:</b>	Well SG 13C-27 - Slot SG 13C-27
<b>Company:</b>	Caerus Oil & Gas	<b>TVD Reference:</b>	KB=30' @ 8136.00usft (Original Well Elev)
<b>Project:</b>	Garfield County, CO (UTM 12N)	<b>MD Reference:</b>	KB=30' @ 8136.00usft (Original Well Elev)
<b>Site:</b>	S27-T4S-R96W(NPR L27)	<b>North Reference:</b>	True
<b>Well:</b>	SG 13C-27	<b>Survey Calculation Method:</b>	Minimum Curvature
<b>Wellbore:</b>	OH		
<b>Design:</b>	PLAN #1		

Planned Survey									
Measured Depth (usft)	Inclination (°)	Azimuth (°)	Vertical Depth (usft)	+N/-S (usft)	+E/-W (usft)	Vertical Section (usft)	Dogleg Rate (°/100usft)	Build Rate (°/100u)	Comments / Formations
9,200.00	2.91	250.00	8,805.50	709.43	2,214.88	2,325.71	0.00	0.00	
9,300.00	2.91	250.00	8,905.37	707.69	2,210.10	2,320.63	0.00	0.00	
9,400.00	2.91	250.00	9,005.24	705.95	2,205.32	2,315.55	0.00	0.00	
9,500.00	2.91	250.00	9,105.11	704.21	2,200.55	2,310.47	0.00	0.00	
9,600.00	2.91	250.00	9,204.98	702.47	2,195.77	2,305.40	0.00	0.00	
9,700.00	2.91	250.00	9,304.85	700.74	2,190.99	2,300.32	0.00	0.00	
9,800.00	2.91	250.00	9,404.72	699.00	2,186.22	2,295.24	0.00	0.00	
9,900.00	2.91	250.00	9,504.60	697.26	2,181.44	2,290.16	0.00	0.00	
10,000.00	2.91	250.00	9,604.47	695.52	2,176.66	2,285.08	0.00	0.00	
10,100.00	2.91	250.00	9,704.34	693.78	2,171.88	2,280.00	0.00	0.00	
10,200.00	2.91	250.00	9,804.21	692.04	2,167.11	2,274.92	0.00	0.00	
10,300.00	2.91	250.00	9,904.08	690.30	2,162.33	2,269.84	0.00	0.00	
10,400.00	2.91	250.00	10,003.95	688.57	2,157.55	2,264.76	0.00	0.00	
10,500.00	2.91	250.00	10,103.82	686.83	2,152.78	2,259.68	0.00	0.00	
10,600.00	2.91	250.00	10,203.69	685.09	2,148.00	2,254.61	0.00	0.00	
10,700.00	2.91	250.00	10,303.56	683.35	2,143.22	2,249.53	0.00	0.00	
10,800.00	2.91	250.00	10,403.43	681.61	2,138.45	2,244.45	0.00	0.00	
10,900.00	2.91	250.00	10,503.30	679.87	2,133.67	2,239.37	0.00	0.00	
11,000.00	2.91	250.00	10,603.17	678.13	2,128.89	2,234.29	0.00	0.00	
11,100.00	2.91	250.00	10,703.04	676.40	2,124.12	2,229.21	0.00	0.00	
11,200.00	2.91	250.00	10,802.91	674.66	2,119.34	2,224.13	0.00	0.00	
11,204.09	2.91	250.00	10,807.00	674.59	2,119.14	2,223.92	0.00	0.00	CAMEO.NPC (TVD)
11,300.00	2.91	250.00	10,902.79	672.92	2,114.56	2,219.05	0.00	0.00	
11,400.00	2.91	250.00	11,002.66	671.18	2,109.79	2,213.97	0.00	0.00	
11,500.00	2.91	250.00	11,102.53	669.44	2,105.01	2,208.89	0.00	0.00	
11,600.00	2.91	250.00	11,202.40	667.70	2,100.23	2,203.81	0.00	0.00	
11,700.00	2.91	250.00	11,302.27	665.96	2,095.45	2,198.74	0.00	0.00	
11,800.00	2.91	250.00	11,402.14	664.23	2,090.68	2,193.66	0.00	0.00	
11,840.91	2.91	250.00	11,443.00	663.51	2,088.72	2,191.58	0.00	0.00	ROLLINS.NPC (TVD)
11,900.00	2.91	250.00	11,502.01	662.49	2,085.90	2,188.58	0.00	0.00	
12,000.00	2.91	250.00	11,601.88	660.75	2,081.12	2,183.50	0.00	0.00	
12,016.14	2.91	250.00	11,618.00	660.47	2,080.35	2,182.68	0.00	0.00	TD at 12016.14 - TD.MBL (TVD) - SG 13C-27_I

Targets									
Target Name	Dip Angle (°)	Dip Dir. (°)	TVD (usft)	+N/-S (usft)	+E/-W (usft)	Northing (usft)	Easting (usft)	Latitude	Longitude
SG 13C-27_PBHL	0.00	0.00	11,618.00	660.47	2,080.35	14,419,703.60	2,441,814.40	39.673020	-108.152217
- hit/miss target									
- Shape									
- plan hits target center									
- Ellipse (radii L200.00 W100.00 on 250.00 azi)									

# Cathedral Energy Services

## Planning Report

<b>Database:</b>	USA EDM 5000 Multi Users DB	<b>Local Co-ordinate Reference:</b>	Well SG 13C-27 - Slot SG 13C-27
<b>Company:</b>	Caerus Oil & Gas	<b>TVD Reference:</b>	KB=30' @ 8136.00usft (Original Well Elev)
<b>Project:</b>	Garfield County, CO (UTM 12N)	<b>MD Reference:</b>	KB=30' @ 8136.00usft (Original Well Elev)
<b>Site:</b>	S27-T4S-R96W(NPR L27)	<b>North Reference:</b>	True
<b>Well:</b>	SG 13C-27	<b>Survey Calculation Method:</b>	Minimum Curvature
<b>Wellbore:</b>	OH		
<b>Design:</b>	PLAN #1		

Formations						
Measured Depth (usft)	Vertical Depth (usft)	Name	Lithology	Dip (°)	Dip Direction (°)	
3,258.32	3,132.00	WASATCH.NPC (TVD)				
5,811.18	5,532.00	WASATCH_G.NPC (TVD)				
6,144.11	5,845.00	FORT_UNION.NPC (TVD)				
8,222.48	7,829.00	OHIO_CREEK.NPC				
8,484.59	8,091.00	WILLIAMS_FORK.NPC (TVD)				
8,534.64	8,141.00	TOP_GAS.NPC (TVD)				
11,204.09	10,807.00	CAMEO.NPC (TVD)				
11,840.91	11,443.00	ROLLINS.NPC (TVD)				
12,016.14	11,618.00	TD.MBL (TVD)				

Plan Annotations					
Measured Depth (usft)	Vertical Depth (usft)	Local Coordinates			
		+N/-S (usft)	+E/-W (usft)	Comment	
300.00	300.00	0.00	0.00	Start Build 2.00	
450.00	449.93	-0.21	3.92	Start 180.00 hold at 450.00 MD	
630.00	629.68	-0.70	13.33	Start DLS 2.00 TFO -24.58	
1,488.10	1,467.78	43.92	175.96	Start 5900.08 hold at 1488.10 MD	
7,388.17	7,014.57	669.02	2,087.31	Start Drop -2.00	
8,384.57	7,991.00	722.34	2,250.35	Start DLS 2.00 TFO 250.00	
8,530.26	8,136.63	721.07	2,246.87	Start 3485.88 hold at 8530.26 MD	
12,016.14	11,618.00	660.47	2,080.35	TD at 12016.14	