



---

January 22, 2019

Ms. Julie Murphy, Director  
Colorado Oil & Gas Conservation Commission  
1120 Lincoln Street, Ste. 801  
Denver, Colorado 80203

RE: Rule 318.A.e.  
**Northwest B S20-25-19N**

Surface Location: Section 9, Township 1 South, Range 68 West, 6<sup>th</sup> P.M., Broomfield County, CO

Dear Ms. Murphy,

Extraction Oil and Gas is planning to drill the captioned horizontal well in accordance with the provision of COGCC Rule 318A.e.

The proposed wellbore spacing unit consists of:

Township 1 South, Range 68 West, 6<sup>th</sup>, PM

Section 8: E2E2

Section 9: W2W2

Section 16: W2W2

Section 17: E2E2

Section 20: E2NE

Section 21: W2NW

The spacing unit is an 800-acre wellbore spacing unit for the Niobrara formation.

Extraction Oil and Gas, Inc. hereby certifies to the Director that all Owners within the proposed spacing unit above were notified and 30 days have passed without valid objection.

If you have any questions or issues regarding this matter, please contact Jason Rayburn at (720) 974-7798.

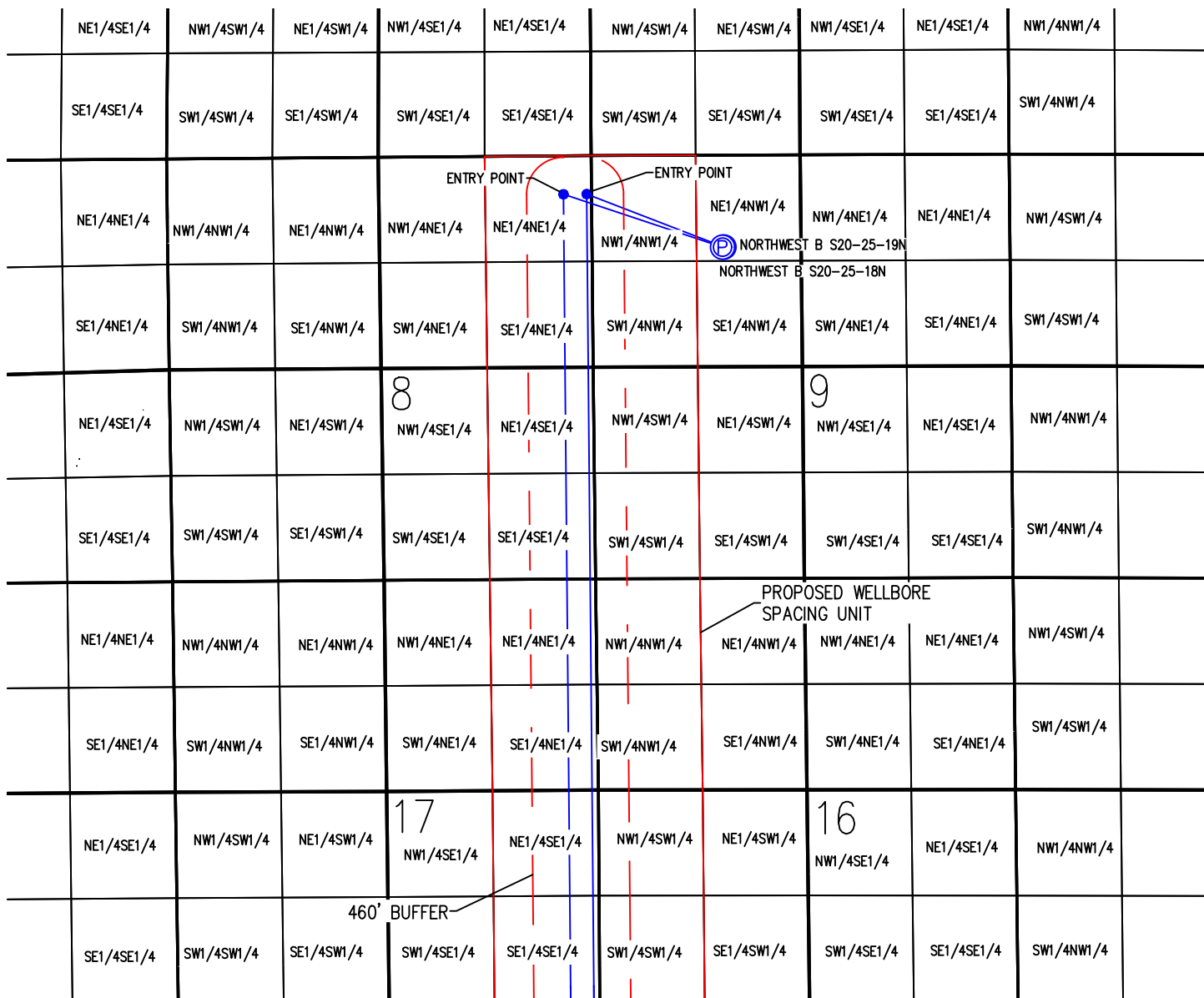
Sincerely,



Extraction Oil & Gas, Inc.

# WELL BORE SPACING UNIT NORTHWEST B S20-25-18N & S20-25-19N

NE1/4 NW1/4 SEC. 9, T1S, R 68 W, 6TH P.M.



NORTHWEST B S20-25-18N

SURFACE LOCATION  
LATITUDE = 39.983539°  
LONGITUDE = -105.010012°

ENTRY POINT LOCATION  
LATITUDE = 39.985380°  
LONGITUDE = -105.017081°

BOTTOM HOLE LOCATION  
LATITUDE = 39.951678°  
LONGITUDE = -105.016926°

NORTHWEST B S20-25-19N

SURFACE LOCATION  
LATITUDE = 39.983543°  
LONGITUDE = -105.009948°

ENTRY POINT LOCATION  
LATITUDE = 39.985382°  
LONGITUDE = -105.016047°

BOTTOM HOLE LOCATION  
LATITUDE = 39.951676°  
LONGITUDE = -105.015891°

## NOTES:

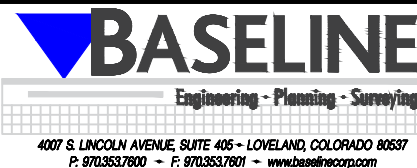
- 1) THIS SKETCH DOES NOT REPRESENT A BOUNDARY SURVEY.
- 2) THE DATUM FOR THE LATITUDES AND LONGITUDES ON THIS SKETCH IS NAD83.

## LEGEND

- ⊙ - PROPOSED WELL HEAD
- ⊙ - PROPOSED BOTTOM HOLE
- - CALCULATED DIMENSION

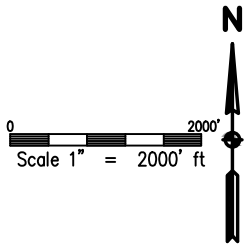
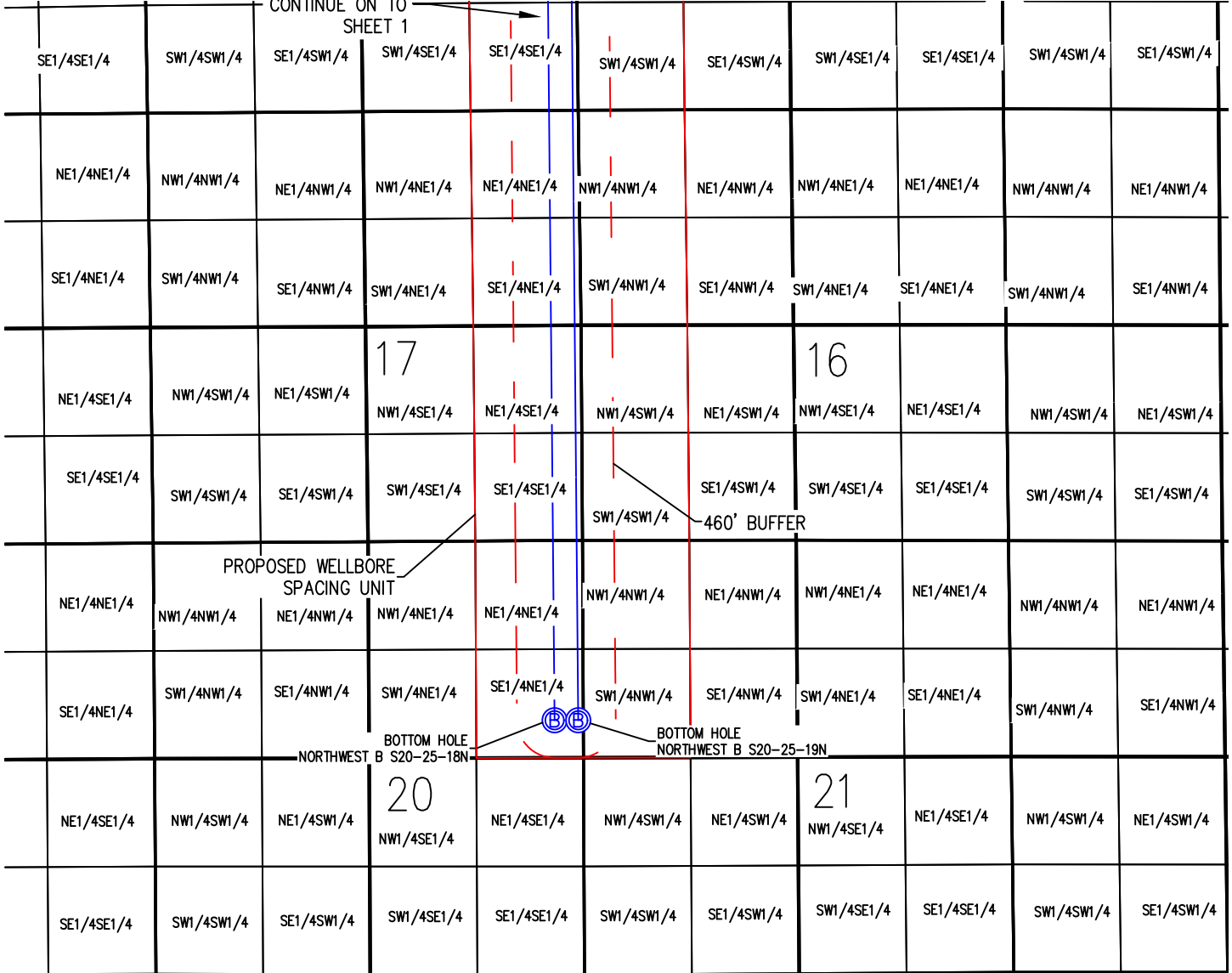


DRAWN BY	RPM	CHECKED BY	AAD
INITIAL SUBMITTAL	2/9/2018		
REVISED	N/A		
DRAWING SIZE	8.5" X 11"		
JOB NO.	EXT01S8B09-02		
SHEET	1 of 2		



# WELL BORE SPACING UNIT NORTHWEST B S20-25-18N & S20-25-19N

WELL BORES  
CONTINUE ON TO  
SHEET 1



NORTHWEST B S20-25-18N

SURFACE LOCATION

LATITUDE = 39.983539°  
LONGITUDE = -105.010012°

ENTRY POINT LOCATION

LATITUDE = 39.985380°  
LONGITUDE = -105.017081°

BOTTOM HOLE LOCATION

LATITUDE = 39.951678°  
LONGITUDE = -105.016926°

NORTHWEST B S20-25-19N

SURFACE LOCATION

LATITUDE = 39.983543°  
LONGITUDE = -105.009948°

ENTRY POINT LOCATION

LATITUDE = 39.985382°  
LONGITUDE = -105.016047°

BOTTOM HOLE LOCATION

LATITUDE = 39.951678°  
LONGITUDE = -105.015891°

NOTES:

- 1) THIS SKETCH DOES NOT REPRESENT A BOUNDARY SURVEY.
- 2) THE DATUM FOR THE LATITUDES AND LONGITUDES ON THIS SKETCH IS NAD83.

**LEGEND**

- ⊙ - PROPOSED WELL HEAD
- ⊙ - PROPOSED BOTTOM HOLE
- - CALCULATED DIMENSION



DRAWN BY	RPM	CHECKED BY	AAD
INITIAL SUBMITTAL	2/9/2018	REVISED	N/A
DRAWING SIZE	8.5" X 11"	JOB NO.	EXT0158B09-2
SHEET	2	OF	2

