



January 22, 2019

Ms. Julie Murphy, Director
Colorado Oil & Gas Conservation Commission
1120 Lincoln Street, Ste. 801
Denver, Colorado 80203

RE: Rule 318.A.e.
Northwest B S20-25-18N

Surface Location: Section 9, Township 1 South, Range 68 West, 6th P.M., Broomfield County, CO

Dear Ms. Murphy,

Extraction Oil and Gas is planning to drill the captioned horizontal well in accordance with the provision of COGCC Rule 318A.e.

The proposed wellbore spacing unit consists of:

Township 1 South, Range 68 West, 6th, PM

Section 8: E2E2
Section 9: W2W2
Section 16: W2W2
Section 17: E2E2
Section 20: E2NE
Section 21: W2NW

The spacing unit is a 800-acre wellbore spacing unit for the Niobrara formation.

Extraction Oil and Gas, Inc. hereby certifies to the Director that all Owners within the proposed spacing unit above were notified and 30 days have passed without valid objection.

If you have any questions or issues regarding this matter, please contact Jason Rayburn at (720) 974-7798.

Sincerely,



Extraction Oil & Gas, Inc.

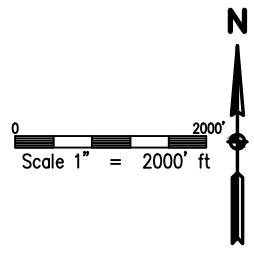
WELL BORE SPACING UNIT NORTHWEST B S20-25-18N & S20-25-19N

NE1/4 NW1/4 SEC. 9, T1S, R 68 W, 6TH P.M.



NORTHWEST B S20-25-18N	NORTHWEST B S20-25-19N
<u>SURFACE LOCATION</u>	<u>SURFACE LOCATION</u>
LATITUDE = 39.983539°	LATITUDE = 39.983543°
LONGITUDE = -105.010012°	LONGITUDE = -105.009948°
<u>ENTRY POINT LOCATION</u>	<u>ENTRY POINT LOCATION</u>
LATITUDE = 39.985380°	LATITUDE = 39.985382°
LONGITUDE = -105.017081°	LONGITUDE = -105.016047°
<u>BOTTOM HOLE LOCATION</u>	<u>BOTTOM HOLE LOCATION</u>
LATITUDE = 39.951678°	LATITUDE = 39.951676°
LONGITUDE = -105.016926°	LONGITUDE = -105.015891°

WELL BORES
CONTINUE ON TO
SHEET 2



- NOTES:
- 1) THIS SKETCH DOES NOT REPRESENT A BOUNDARY SURVEY.
 - 2) THE DATUM FOR THE LATITUDES AND LONGITUDES ON THIS SKETCH IS NAD83.

LEGEND

- PROPOSED WELL HEAD
- PROPOSED BOTTOM HOLE
- CALCULATED DIMENSION



DRAWN BY RPM	CHECKED BY AAD
INITIAL SUBMITTAL 2/9/2018	REVISED N/A
DRAWING SIZE 8.5" X 11"	JOB NO. EXT0158B09-02
SHEET 1	OF 2

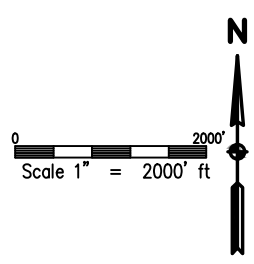
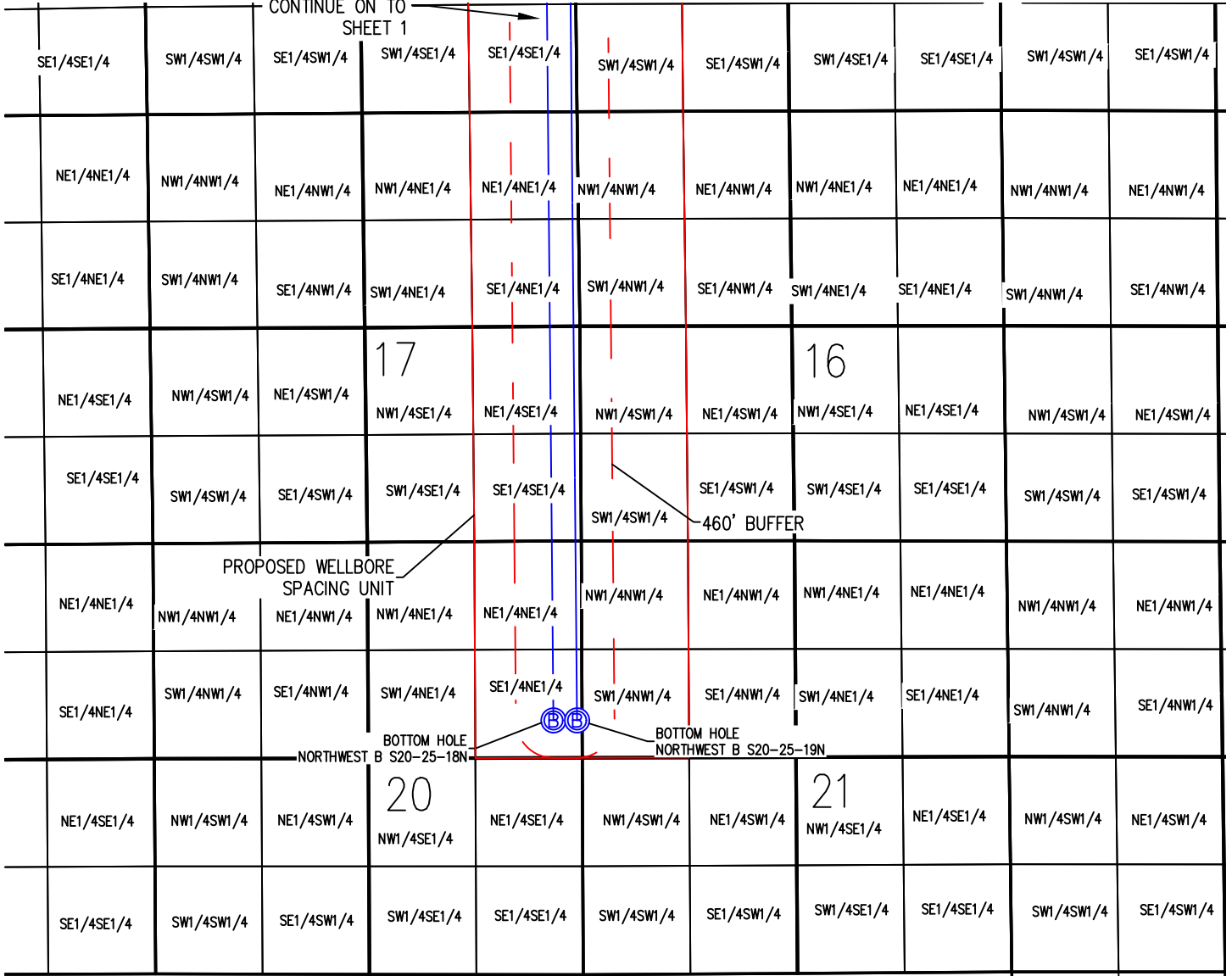
BASELINE
Engineering - Planning - Surveying

4007 S. LINCOLN AVENUE, SUITE 405 - LOVELAND, COLORADO 80537
P: 970.353.7800 - F: 970.353.7801 - www.baselinecorp.com

PLOT_STAMP

WELL BORE SPACING UNIT NORTHWEST B S20-25-18N & S20-25-19N

WELL BORES
CONTINUE ON TO
SHEET 1



NORTHWEST B S20-25-18N	NORTHWEST B S20-25-19N
<u>SURFACE LOCATION</u>	<u>SURFACE LOCATION</u>
LATITUDE = 39.983539°	LATITUDE = 39.983543°
LONGITUDE = -105.010012°	LONGITUDE = -105.009948°
<u>ENTRY POINT LOCATION</u>	<u>ENTRY POINT LOCATION</u>
LATITUDE = 39.985380°	LATITUDE = 39.985382°
LONGITUDE = -105.017081°	LONGITUDE = -105.016047°
<u>BOTTOM HOLE LOCATION</u>	<u>BOTTOM HOLE LOCATION</u>
LATITUDE = 39.951678°	LATITUDE = 39.951676°
LONGITUDE = -105.016926°	LONGITUDE = -105.015891°

NOTES:
 1) THIS SKETCH DOES NOT REPRESENT A BOUNDARY SURVEY.
 2) THE DATUM FOR THE LATITUDES AND LONGITUDES ON THIS SKETCH IS NAD83.

LEGEND

- PROPOSED WELL HEAD
- PROPOSED BOTTOM HOLE
- CALCULATED DIMENSION



DRAWN BY RPM	CHECKED BY AAD
INITIAL SUBMITTAL 2/9/2018	REVISED N/A
DRAWING SIZE 8.5" X 11"	
JOB NO. EXT0158B09-2	
SHEET 2 of 2	

Engineering - Planning - Surveying

4007 S. LINCOLN AVENUE, SUITE 405 - LOVELAND, COLORADO 80537
 P: 970.353.7800 - F: 970.353.7801 - www.baselinecorp.com

PLOT_STAMP