



January 22, 2019

Ms. Julie Murphy, Director
Colorado Oil & Gas Conservation Commission
1120 Lincoln Street, Ste. 801
Denver, Colorado 80203

RE: Rule 318.A.e.
Interchange A S22-30-1C

Surface Location: Section 10, Township 1 South, Range 68 West, 6th P.M., Broomfield County, CO

Dear Ms. Murphy

Extraction Oil and Gas is planning to drill the captioned horizontal wells in accordance with the provision of COGCC Rule 318A.e.

The proposed wellbore spacing unit consists of:

Township 1 South, Range 68 West, 6th, PM

Section 4: SESE
Section 3: SWSW
Section 9: E2E2
Section 10: W2W2
Section 15: W2W2
Section 16: E2E2
Section 21: E2E2
Section 22: W2W2

The spacing unit is a 1040-acre wellbore spacing unit for the Codell formation.

Extraction Oil and Gas hereby certifies to the Director that all Owners within the proposed spacing unit above were notified and 30 days have passed without valid objection.

If you have any questions or issues regarding this matter, please contact Jason Rayburn at (720) 974-7798.

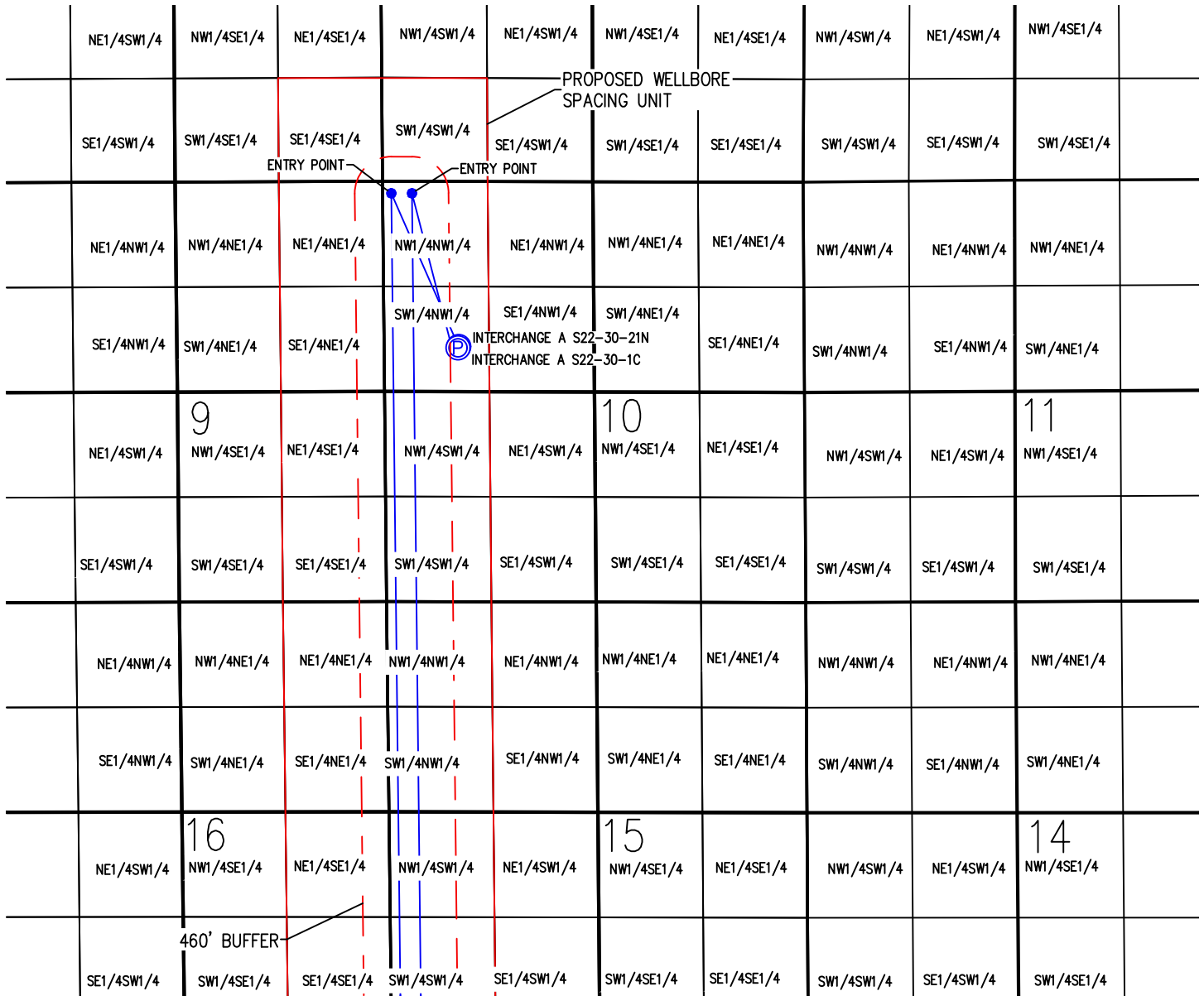
Sincerely,



Extraction Oil & Gas, Inc.

WELL BORE SPACING UNIT INTERCHANGE A S22-30-21N & S22-30-1C

SW1/4 NW1/4 SEC. 10, T1S, R 68 W, 6TH P.M.



WELL BORES
CONTINUE ON TO
SHEET 2

INTERCHANGE A S22-30-21N

SURFACE LOCATION

LATITUDE = 39.980949°
LONGITUDE = -104.993846°

ENTRY POINT LOCATION

LATITUDE = 39.986256°
LONGITUDE = -104.996831°

BOTTOM HOLE LOCATION

LATITUDE = 39.944377°
LONGITUDE = -104.996525°

INTERCHANGE A S22-30-1C

SURFACE LOCATION

LATITUDE = 39.980646°
LONGITUDE = -104.994064°

ENTRY POINT LOCATION

LATITUDE = 39.986250°
LONGITUDE = -104.995903°

BOTTOM HOLE LOCATION

LATITUDE = 39.944373°
LONGITUDE = -104.995614°

NOTES:

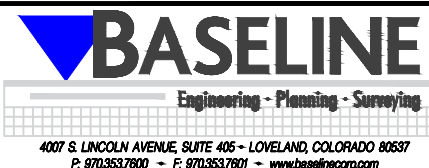
- 1) THIS SKETCH DOES NOT REPRESENT A BOUNDARY SURVEY.
- 2) THE DATUM FOR THE LATITUDES AND LONGITUDES ON THIS SKETCH IS NAD83.

LEGEND

- ⊙ - PROPOSED WELL HEAD
- ⊙ - PROPOSED BOTTOM HOLE
- - CALCULATED DIMENSION

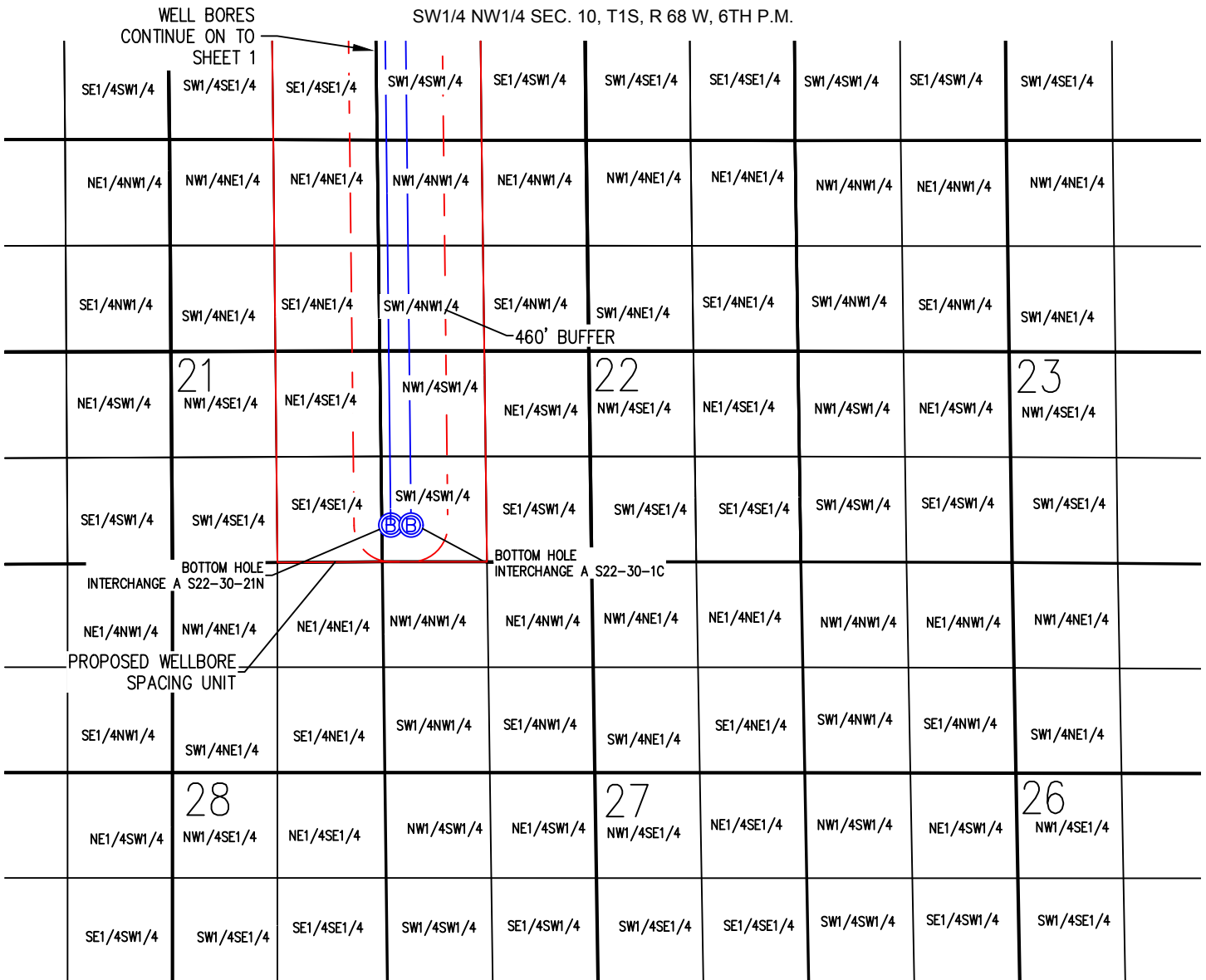


| | | | |
|-------------------|------------|------------|----------------|
| DRAWN BY | RPM | CHECKED BY | AAD |
| INITIAL SUBMITTAL | 2/9/2018 | REVISED | N/A |
| DRAWING SIZE | 8.5" X 11" | JOB NO. | EXT01S8B010-03 |
| SHEET | 1 | OF | 2 |



WELL BORE SPACING UNIT INTERCHANGE A S22-30-21N & S22-30-1C

SW1/4 NW1/4 SEC. 10, T1S, R 68 W, 6TH P.M.



INTERCHANGE A S22-30-21N

SURFACE LOCATION
LATITUDE = 39.980949°
LONGITUDE = -104.993846°

ENTRY POINT LOCATION
LATITUDE = 39.986256°
LONGITUDE = -104.996831°

BOTTOM HOLE LOCATION
LATITUDE = 39.944377°
LONGITUDE = -104.996525°

INTERCHANGE A S22-30-1C

SURFACE LOCATION
LATITUDE = 39.980646°
LONGITUDE = -104.994064°

ENTRY POINT LOCATION
LATITUDE = 39.986250°
LONGITUDE = -104.995903°

BOTTOM HOLE LOCATION
LATITUDE = 39.944373°
LONGITUDE = -104.995614°

NOTES:

- 1) THIS SKETCH DOES NOT REPRESENT A BOUNDARY SURVEY.
- 2) THE DATUM FOR THE LATITUDES AND LONGITUDES ON THIS SKETCH IS NAD83.

LEGEND

- ⊙ - PROPOSED WELL HEAD
- ⊙ - PROPOSED BOTTOM HOLE
- - CALCULATED DIMENSION



| | |
|-------------------------------|-------------------|
| DRAWN BY RPM | CHECKED BY AAD |
| INITIAL SUBMITTAL 2/9/2018 | |
| REVISED N/A | |
| DRAWING SIZE 8.5" X 11" | |
| JOB NO. EXT01S8BW10-03 | |
| SHEET 2 | OF 2 |

BASELINE
Engineering - Planning - Surveying

4007 S. LINCOLN AVENUE, SUITE 405 • LOVELAND, COLORADO 80537
P: 970.353.7800 • F: 970.353.7801 • www.baselineincorp.com