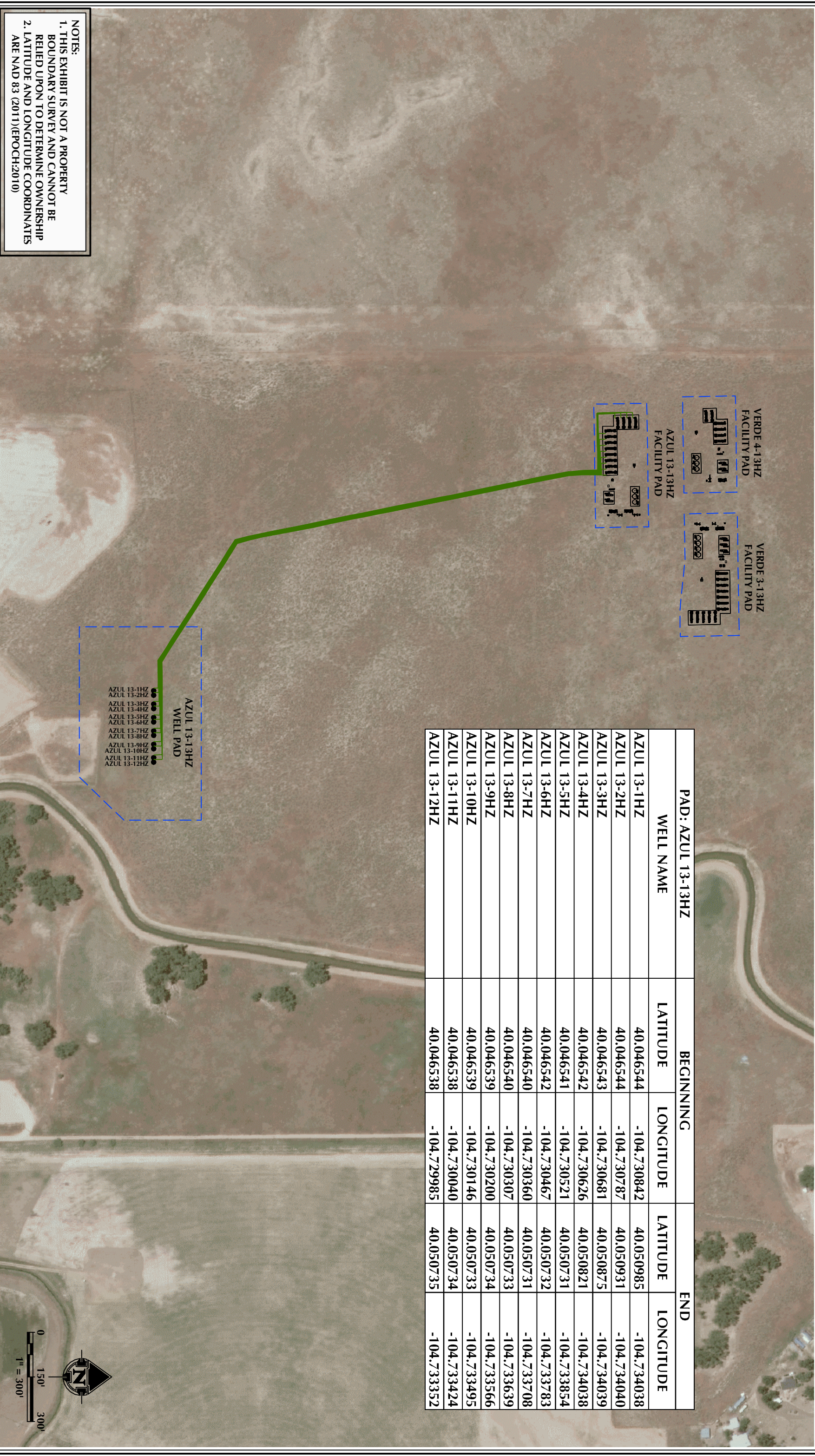


PAD: AZUL 13-13HZ		BEGINNING		END	
WELL NAME		LATITUDE	LONGITUDE	LATITUDE	LONGITUDE
AZUL 13-1HZ		40.046544	-104.730842	40.050985	-104.734038
AZUL 13-2HZ		40.046544	-104.730787	40.050931	-104.734040
AZUL 13-3HZ		40.046543	-104.730681	40.050875	-104.734039
AZUL 13-4HZ		40.046542	-104.730626	40.050821	-104.734038
AZUL 13-5HZ		40.046541	-104.730521	40.050731	-104.733854
AZUL 13-6HZ		40.046542	-104.730467	40.050732	-104.733783
AZUL 13-7HZ		40.046540	-104.730360	40.050731	-104.733708
AZUL 13-8HZ		40.046540	-104.730307	40.050733	-104.733639
AZUL 13-9HZ		40.046539	-104.730200	40.050734	-104.733566
AZUL 13-10HZ		40.046539	-104.730146	40.050733	-104.733495
AZUL 13-11HZ		40.046538	-104.730040	40.050734	-104.733424
AZUL 13-12HZ		40.046538	-104.729985	40.050735	-104.733352



NOTES:
1. THIS EXHIBIT IS NOT A PROPERTY
BOUNDARY SURVEY AND CANNOT BE
RELIED UPON TO DETERMINE OWNERSHIP
2. LATITUDE AND LONGITUDE COORDINATES
ARE NAD 83 (2011)/(EPOCH:2010)

LEGEND:
○ AS-BUILT WELL
— AS-BUILT FLOWLINE
- - - EXISTING PAD

DATA SOURCES:
-AERIAL COURTESY OF ESRI, INC.

REV.	DATE	DESCRIPTION
A	12/12/18	

LOVELAND OFFICE
6706 North Franklin Avenue
Suite 200
Louisville, CO 80238
Phone: 303.766.4311

SHERIDAN OFFICE
1095 Saberton Avenue
Sheridan, Wyoming 82801
Phone: 307.674.0609

609 CONSULTING, LLC

1099 18th Street
Denver, CO 80202

SCALE: 1" = 300'

DATE SURVEYED: 12/12/18

DRAFTER: SCB

REVISED:

AZUL 13-13HZ
FLOWLINE ROUTE
LOCATED IN SECTION 13
T1N, R66W, 6TH P.M.
WELD COUNTY, COLORADO