

**1001 17th Street
Suite 2000
Denver, Colorado
80202**



**Natalie Svendsen
Regulatory Analyst
Tel: 720.595.2194
E-mail:
nsvendsen@gwogco.com**

September 13, 2018

Colorado Oil and Gas Conservation Commission
1120 Lincoln Street, Suite 801
Denver, Colorado 80203

RE: **Proposed Wellbore Spacing Unit**
Berry IC 11-239HN
Niobrara New Drill

SWNW Section 8
Township 3 North, Range 67W, 6th P.M.
Weld County, Colorado

Dear Director:

Great Western Operating Company, LLC is planning to drill the above captioned well in accordance with the provisions of COGCC Rule 318A.e.

Great Western proposed wellbore spacing unit consists of:

T3N-R67W

Sec. 7: All

Sec. 8: W2W2

T3N-R68W

Sec. 11: E2E2

Sec. 12: All

1600 Acres

The 30 day notification time period has passed and we have not received any objections to such well locations or proposed spacing unit, therefore Great Western hereby requests the Director to approve the above mentioned well. Great Western Operating Company, LLC respectfully requests that the COGCC review the enclosed map illustrating the proposed wellbore spacing unit.

Respectfully,

Natalie Svendsen

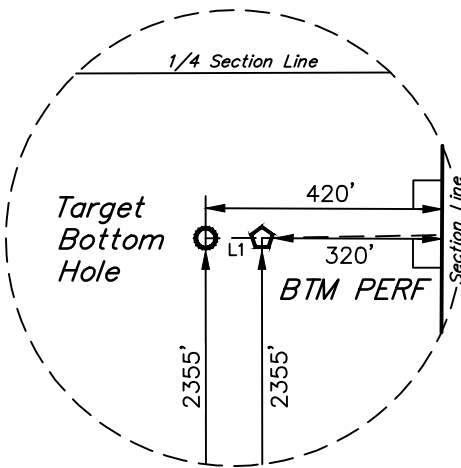
Natalie Svendsen
Regulatory Analyst
Great Western Operating Company, LLC

BERRY IC 11-239HN
SW 1/4 NW 1/4, SECTION 8, T3N, R67W, 6th P.M.
WELD COUNTY, COLORADO

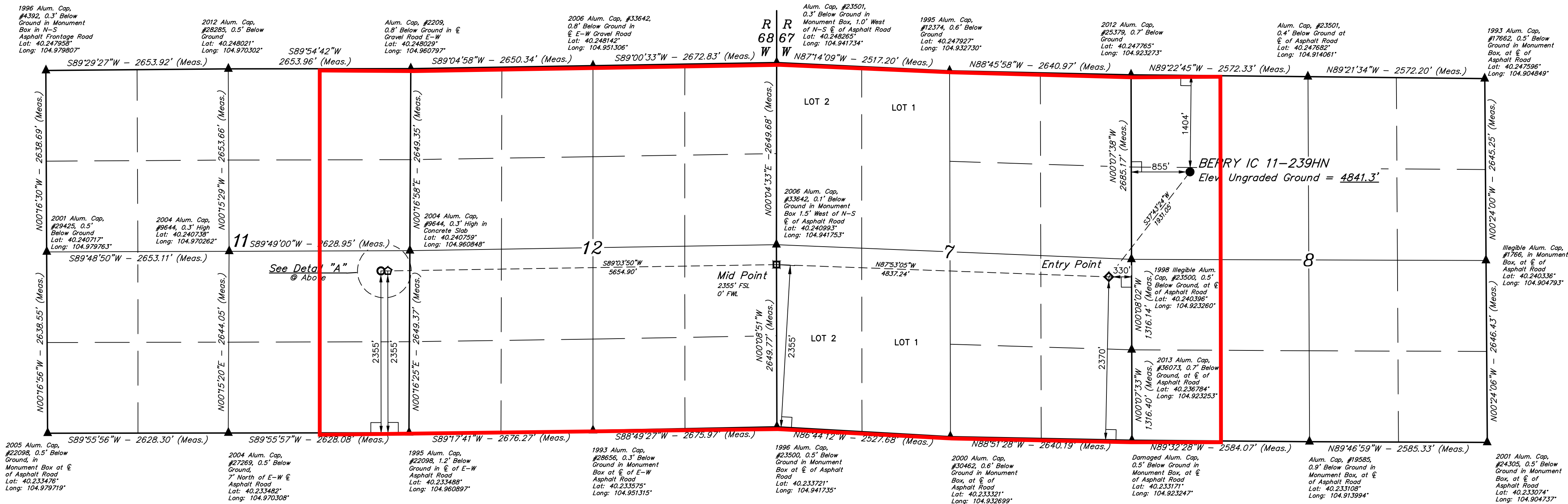
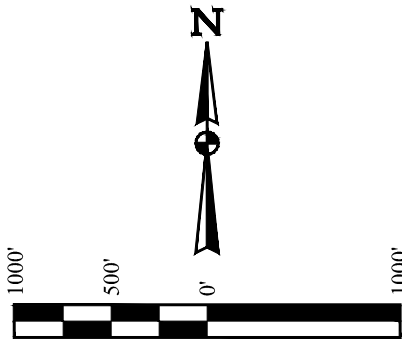
BASIS OF BEARINGS
TRANSVERSE MERCATOR PROJECTION WITH A CENTRAL MERIDIAN OF W105°00'00".

BASIS OF ELEVATION
OPUS SOLUTION GENERATED NAVD 88

Detail "A"
No Scale



LINE TABLE		
LINE	DIRECTION	LENGTH
L1	S89°55'57"W	100.00'



LEGEND:

- 90° SYMBOL
- PROPOSED WELLHEAD.
- TARGET BOTTOM HOLE.
- ENTRY POINT.
- MID POINT.
- BTM PERF.
- SECTION CORNERS LOCATED. (NAD 83)

NAD 83 (SURFACE LOCATION)	NAD 83 (ENTRY POINT)	NAD 83 (MID-POINT)	NAD 83 (BTM PERF)	NAD 83 (TARGET BOTTOM HOLE)
LATITUDE = 40°14'37.98" (40.243884) LONGITUDE = 104°55'12.74" (104.920205)	LATITUDE = 40°14'22.90" (40.239696) LONGITUDE = 104°55'27.99" (104.924441)	LATITUDE = 40°14'24.70" (40.240195) LONGITUDE = 104°56'30.30" (104.941751)	LATITUDE = 40°14'23.82" (40.239950) LONGITUDE = 104°57'43.20" (104.961999)	LATITUDE = 40°14'23.82" (40.239950) LONGITUDE = 104°57'44.49" (104.962357)
NAD 27 (SURFACE LOCATION)	NAD 27 (ENTRY POINT)	NAD 27 (MID-POINT)	NAD 27 (BTM PERF)	NAD 27 (TARGET BOTTOM HOLE)
LATITUDE = 40°14'38.04" (40.243901) LONGITUDE = 104°55'10.82" (104.919673)	LATITUDE = 40°14'22.96" (40.239712) LONGITUDE = 104°55'26.07" (104.923909)	LATITUDE = 40°14'24.76" (40.240212) LONGITUDE = 104°56'28.39" (104.941219)	LATITUDE = 40°14'23.88" (40.239967) LONGITUDE = 104°57'41.28" (104.961466)	LATITUDE = 40°14'23.88" (40.239966) LONGITUDE = 104°57'42.57" (104.961824)

CERTIFICATION
THIS IS TO CERTIFY THAT THE ABOVE DESCRIBED SURVEY WAS MADE IN ACCORDANCE WITH THE RULES AND REGULATIONS OF THE BOARD OF LAND SURVEYORS OF THE STATE OF COLORADO, AND THAT THE SAME ARE TRUE AND CORRECT TO THE BEST OF MY KNOWLEDGE AND BELIEF.

REGISTERED LAND SURVEYOR
REGISTRATION NO. 28285
STATE OF COLORADO
JAMES FRESHWATER

REV: 1 07-23-18 D.J.S. (ENTRY POINT MOVE)



UELS, LLC
Corporate Office: 85 South 200 East
Vernal, UT 84078 * (435) 789-1017

SURVEYED BY	JAMES FRESHWATER	02-09-18	SCALE
DRAWN BY	C.VIE	06-12-18	1" = 1000'
WELL LOCATION PLAT			