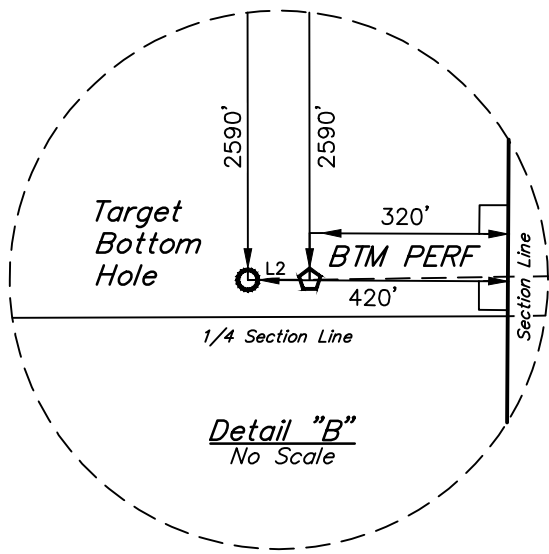
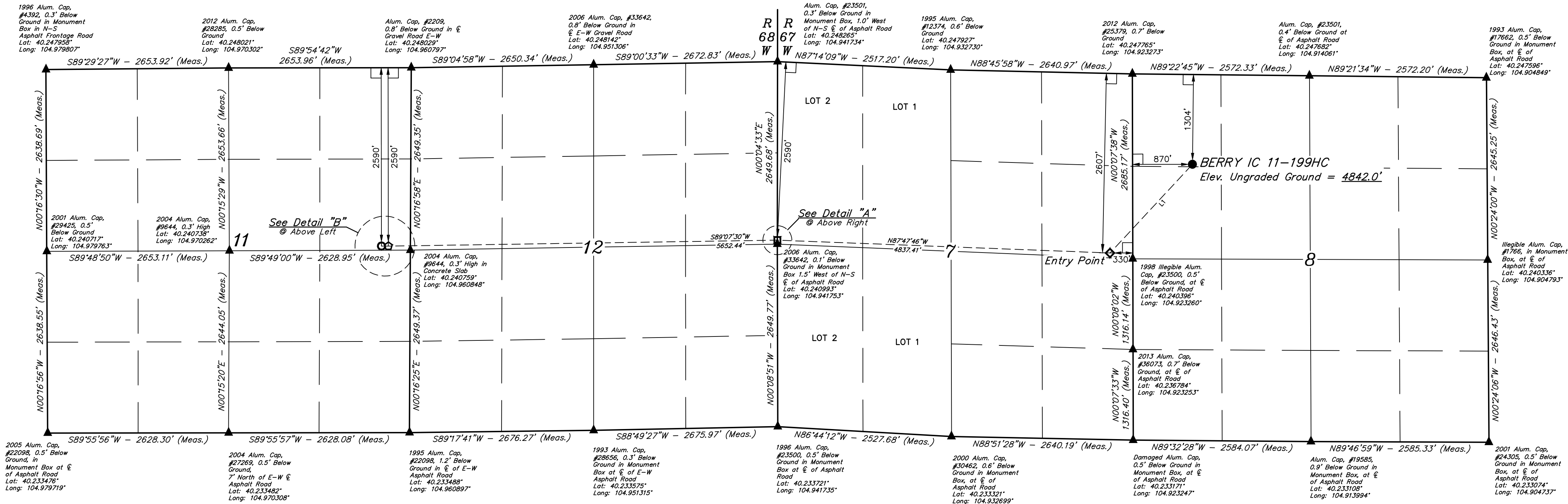
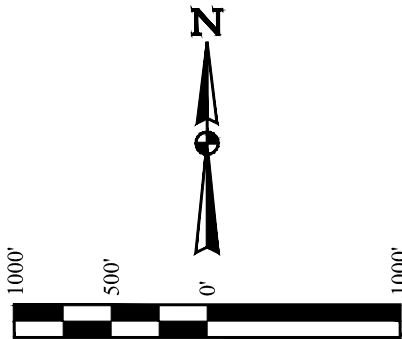
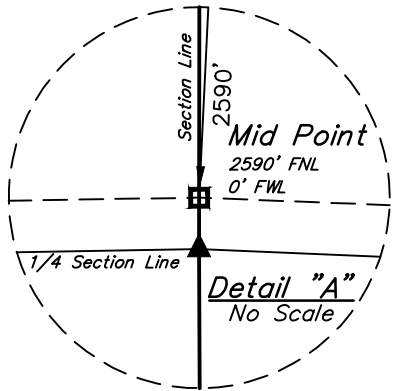


BERRY IC 11-199HC
NW 1/4 NW 1/4, SECTION 8, T3N, R67W, 6th P.M.
WELD COUNTY, COLORADO

BASIS OF BEARINGS
TRANSVERSE MERCATOR PROJECTION WITH A CENTRAL MERIDIAN OF W105°00'00".
BASIS OF ELEVATION
OPUS SOLUTION GENERATED NAVD 88



LINE TABLE		
LINE	DIRECTION	LENGTH
L1	S42°54'59"W	1758.05'
L2	S89°54'42"W	100.00'



- LEGEND:
- 90° SYMBOL
 - PROPOSED WELLHEAD.
 - TARGET BOTTOM HOLE.
 - ENTRY POINT.
 - MID POINT.
 - BTM PERF.
 - SECTION CORNERS LOCATED. (NAD 83)

NAD 83 (SURFACE LOCATION)	NAD 83 (ENTRY POINT)	NAD 83 (MID-POINT)	NAD 83 (BTM PERF)	NAD 83 (TARGET BOTTOM HOLE)
LATITUDE = 40°14'38.97" (40.244159) LONGITUDE = 104°55'12.54" (104.920151)	LATITUDE = 40°14'26.26" (40.240628) LONGITUDE = 104°55'27.99" (104.924442)	LATITUDE = 40°14'28.14" (40.241149) LONGITUDE = 104°56'30.31" (104.941752)	LATITUDE = 40°14'27.31" (40.240920) LONGITUDE = 104°57'43.17" (104.961993)	LATITUDE = 40°14'27.31" (40.240920) LONGITUDE = 104°57'44.46" (104.962351)
NAD 27 (SURFACE LOCATION)	NAD 27 (ENTRY POINT)	NAD 27 (MID-POINT)	NAD 27 (BTM PERF)	NAD 27 (TARGET BOTTOM HOLE)
LATITUDE = 40°14'39.03" (40.244175) LONGITUDE = 104°55'10.63" (104.919620)	LATITUDE = 40°14'26.32" (40.240645) LONGITUDE = 104°55'26.08" (104.923911)	LATITUDE = 40°14'28.19" (40.241165) LONGITUDE = 104°56'28.39" (104.941221)	LATITUDE = 40°14'27.37" (40.240937) LONGITUDE = 104°57'41.26" (104.961460)	LATITUDE = 40°14'27.37" (40.240936) LONGITUDE = 104°57'42.54" (104.961818)

CERTIFICATION
THIS IS TO CERTIFY THAT THE ABOVE DESCRIBED SURVEY WAS MADE AND RECORDED UNDER MY SUPERVISION
AND THAT THE SAME ARE TRUE AND CORRECT TO THE BEST OF MY KNOWLEDGE AND BELIEF.
RECORDED LAND SURVEYOR
REGISTRATION NO. 28285
STATE OF COLORADO
JAMES FRESHWATER
CIVIL
2018

REV: 1 07-23-18 D.J.S. (ENTRY POINT MOVE)

UELTS, LLC
Corporate Office * 85 South 200 East
Vernal, UT 84078 * (435) 789-1017

WELL LOCATION PLAT

SURVEYED BY JAMES FRESHWATER
DRAWN BY C.VIE

02-09-18
06-12-18

SCALE
1" = 1000'