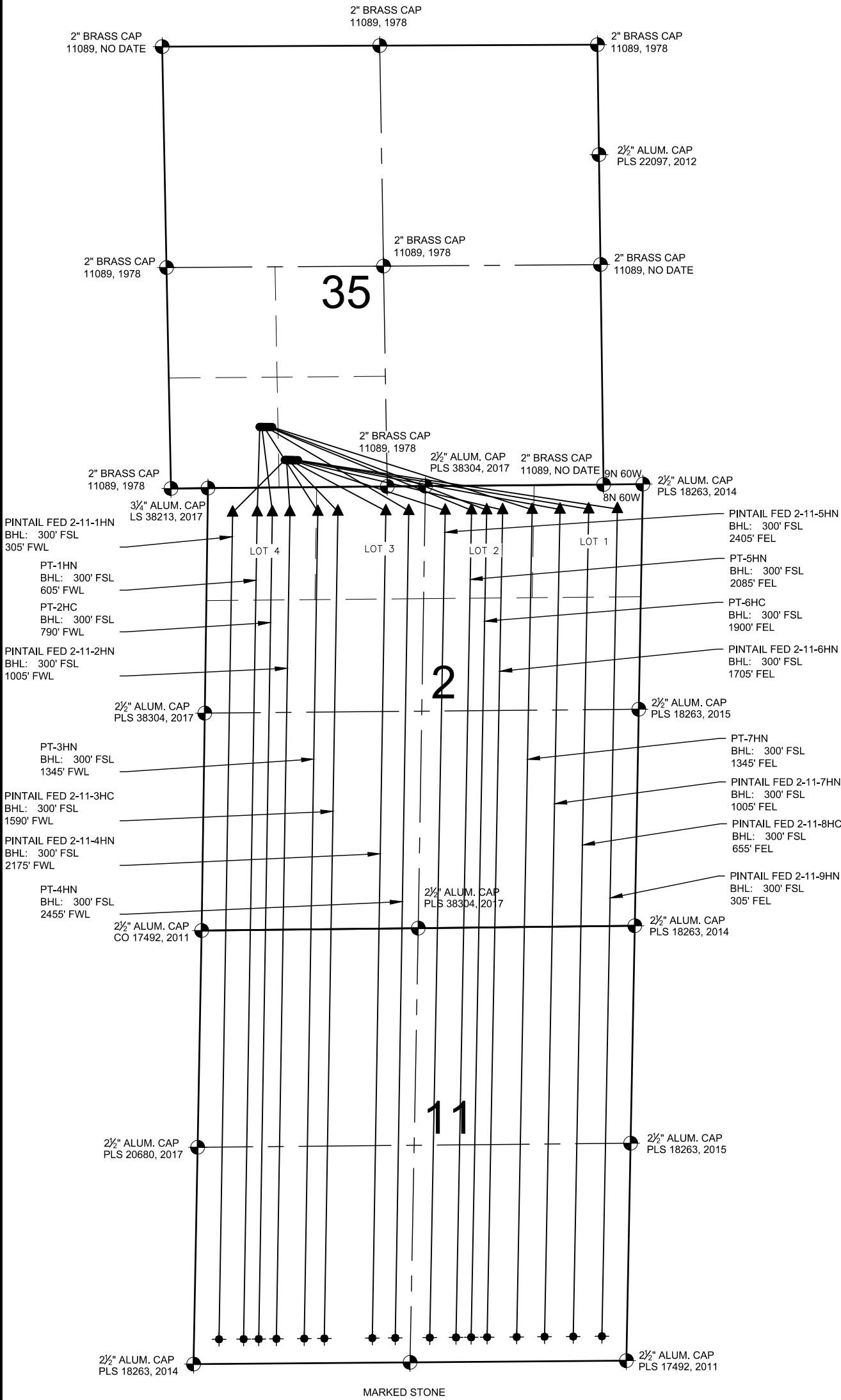


PINTAIL FED PAD  
MULTI-WELL PLAN



NOTES:

1. THIS FIELD SURVEY CONFORMS TO THE MINIMUM STANDARDS SET BY THE COGCC, RULE NO. 215
2. ALL DISTANCES AND BEARINGS SHOWN HEREON ARE GROUND VALUES AS GPS MEASURED IN THE FIELD, WITH TIES TO WELLS MEASURED PERPENDICULAR TO LINES SHOWN HEREON. THIS LOW DISTORTION PROJECTION (LDP) IS BASED ON THE NORTH AMERICAN DATUM OF 1983, U.S. SURVEY FOOT WITH A LATITUDE ORIGIN OF 40.655085°N, A CENTRAL MERIDIAN LONGITUDE OF 104.086861°W, AND A SCALE FACTOR ON THE CENTRAL MERIDIAN OF 1.000232 (EXACT). THE LDP BASIS OF BEARINGS IS GEODETIC NORTH.
3. FIELD VERIFICATION OF MONUMENTS COMPLETED WITHIN 1 YEAR OF SIGNATURE DATE, UNLESS OTHERWISE NOTED.

NOTES:

- PT-1HN TO BE AT 742' FSL & 1098' FWL.  
BOTTOM HOLE AT 300' FSL & 605' FWL, SEC. 11.
- PT-2HC TO BE AT 741' FSL & 1123' FWL.  
BOTTOM HOLE AT 300' FSL & 790' FWL, SEC. 11.
- PT-3HN TO BE AT 740' FSL & 1148' FWL.  
BOTTOM HOLE AT 300' FSL & 1345' FWL, SEC. 11.
- PT-4HN TO BE AT 740' FSL & 1173' FWL.  
BOTTOM HOLE AT 300' FSL & 2455' FWL, SEC. 11.
- PT-5HN TO BE AT 739' FSL & 1198' FWL.  
BOTTOM HOLE AT 300' FSL & 2085' FEL, SEC. 11.
- PT-6HC TO BE AT 738' FSL & 1223' FWL.  
BOTTOM HOLE AT 300' FSL & 1900' FEL, SEC. 11.
- PT-7HN TO BE AT 738' FSL & 1248' FWL.  
BOTTOM HOLE AT 300' FSL & 1345' FEL, SEC. 11.
- PINTAIL FED 2-11-1HN TO BE AT 335' FSL & 1397' FWL.  
BOTTOM HOLE AT 300' FSL & 305' FWL, SEC. 11.
- PINTAIL FED 2-11-2HN TO BE AT 334' FSL & 1417' FWL.  
BOTTOM HOLE AT 300' FSL & 1005' FWL, SEC. 11.
- PINTAIL FED 2-11-3HC TO BE AT 334' FSL & 1437' FWL.  
BOTTOM HOLE AT 300' FSL & 1590' FWL, SEC. 11.
- PINTAIL FED 2-11-4HN TO BE AT 333' FSL & 1457' FWL.  
BOTTOM HOLE AT 300' FSL & 2175' FWL, SEC. 11.
- PINTAIL FED 2-11-5HN TO BE AT 333' FSL & 1477' FWL.  
BOTTOM HOLE AT 300' FSL & 2405' FEL, SEC. 11.
- PINTAIL FED 2-11-6HN TO BE AT 332' FSL & 1497' FWL.  
BOTTOM HOLE AT 300' FSL & 1705' FEL, SEC. 11.
- PINTAIL FED 2-11-7HN TO BE AT 332' FSL & 1517' FWL.  
BOTTOM HOLE AT 300' FSL & 1005' FEL, SEC. 11.
- PINTAIL FED 2-11-8HC TO BE AT 331' FSL & 1537' FWL.  
BOTTOM HOLE AT 300' FSL & 655' FEL, SEC. 11.
- PINTAIL FED 2-11-9HN TO BE AT 331' FSL & 1557' FWL.  
BOTTOM HOLE AT 300' FSL & 305' FEL, SEC. 11.

LEGEND

- = EXISTING MONUMENT      ▲ = LANDING POINT  
○ = CALCULATED POSITION      LP = LANDING POINT  
● = PROPOSED WELL      BHL = BOTTOM HOLE  
◆ = BOTTOM HOLE

