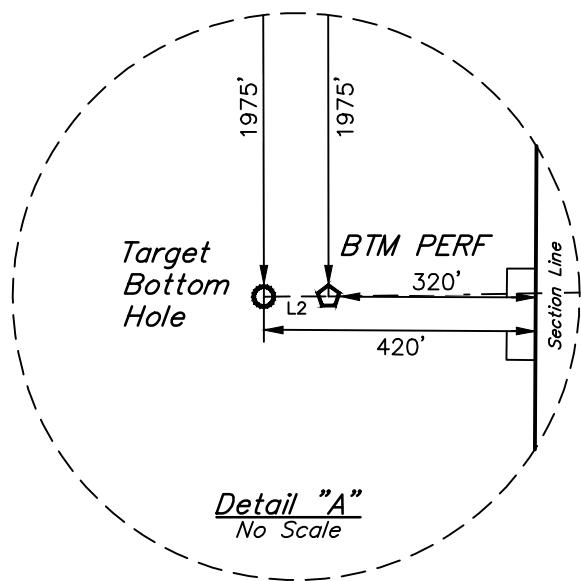


GREAT WESTERN OPERATING COMPANY

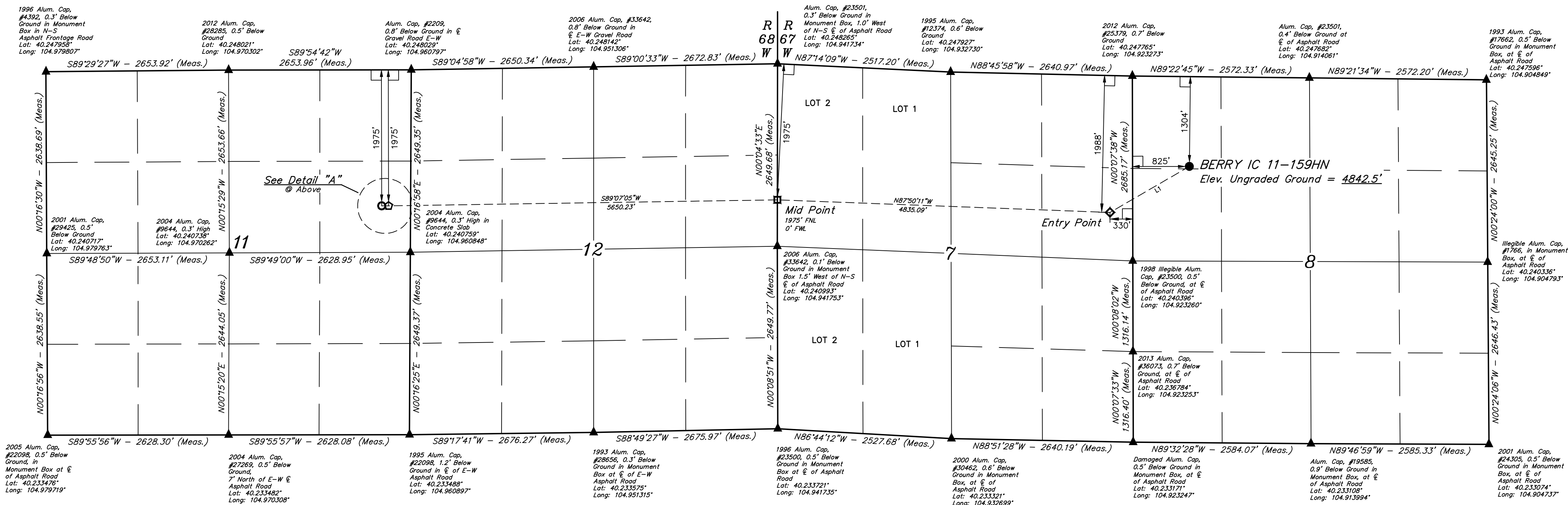
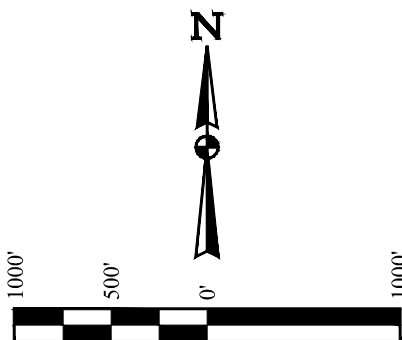
BERRY IC 11-159HN
NW 1/4 NW 1/4, SECTION 8, T3N, R67W, 6th P.M.
WELD COUNTY, COLORADO

BASIS OF BEARINGS
TRANSVERSE MERCATOR PROJECTION WITH A CENTRAL MERIDIAN OF W105°00'00".

BASIS OF ELEVATION
OPUS SOLUTION GENERATED NAVD 88



LINE TABLE		
LINE	DIRECTION	LENGTH
L1	S59°54'55"W	1333.06'
L2	S89°54'42"W	100.00'



LEGEND:

- L = 90° SYMBOL
 ● = PROPOSED WELLHEAD.
 ○ = TARGET BOTTOM HOLE.
 ◆ = ENTRY POINT.
 ◻ = MID POINT.
 ☆ = BTM PERF.
 ▲ = SECTION CORNERS LOCATED. (NAD 83)

NAD 83 (SURFACE LOCATION)	NAD 83 (ENTRY POINT)	NAD 83 (MID-POINT)	NAD 83 (BTM PERF)	NAD 83 (TARGET BOTTOM HOLE)
LATITUDE = 40°14'38.97" (04.244159)	LATITUDE = 40°14'32.38" (04.242328)	LATITUDE = 40°14'34.22" (04.242839)	LATITUDE = 40°14'33.39" (04.242608)	LATITUDE = 40°14'33.39" (04.242608)
LONGITUDE = 104°55'13.12" (104.920312)	LONGITUDE = 104°55'28.00" (104.924445)	LONGITUDE = 104°56'30.29" (104.941748)	LONGITUDE = 104°57'43.13" (104.961981)	LONGITUDE = 104°57'44.42" (104.962339)
NAD 27 (SURFACE LOCATION)	NAD 27 (ENTRY POINT)	NAD 27 (MID-POINT)	NAD 27 (BTM PERF)	NAD 27 (TARGET BOTTOM HOLE)
LATITUDE = 40°14'39.00" (04.244175)	LATITUDE = 40°14'32.44" (04.242344)	LATITUDE = 40°14'34.28" (04.242855)	LATITUDE = 40°14'33.45" (04.242624)	LATITUDE = 40°14'33.45" (04.242624)
LONGITUDE = 104°55'11.21" (104.919781)	LONGITUDE = 104°55'26.09" (104.923914)	LONGITUDE = 104°56'28.38" (104.941216)	LONGITUDE = 104°57'41.21" (104.961448)	LONGITUDE = 104°57'42.50" (104.961806)

CERTIFICATE

THIS IS TO CERTIFY THAT THE ABOVE DRAWING WAS PREPARED FROM THE NOTES OF ACTUAL SURVEYS MADE BY ME OR UNDER MY SUPERVISION AND THAT THE SAME ARE TRUE AND CORRECT TO THE BEST OF MY KNOWLEDGE AND BELIEF.

REGISTERED LAND SURVEYOR
REGISTRATION NO. 28285
STATE OF COLORADO

REV: 1 07-23-18 D.J.S. (ENTRY POINT MOVE)

PDOP = 1.4



UELS, LLC
Corporate Office * 85 South 200 East
Salt Lake City, UT 84143 * (801) 788-1815

SURVEYED BY	JAMES FRESHWATER	02-09-18	SCALE
DRAWN BY	C.IVIE	06-12-18	1" = 1000'

WELL LOCATION PLAT