
WEXPRO COMPANY E-BILL

BW Musser 27

Moffat County , Colorado

Cement Surface Casing

13-Mar-2008

Job Site Documents

The Road to Excellence Starts with Safety

Sold To #: 343491	Ship To #: 2638546	Quote #:	Sales Order #: 5744160
Customer: WEXPRO COMPANY E-BILL	Customer Rep:		
Well Name: BW Musser	Well #: 27	API/UWI #: 05-081-07406-00	
Field:	City (SAP): UNKNOWN	County/Parish: Moffat	State: Colorado
Job Purpose: Cement Surface Casing			
Well Type: Development Well	Job Type: Cement Surface Casing		
Sales Person: VOLNER, THOMAS	Srvc Supervisor: HEAPS, DAVID	MBU ID Emp #:	404575

Job Personnel

HES Emp Name	Exp Hrs	Emp #	HES Emp Name	Exp Hrs	Emp #	HES Emp Name	Exp Hrs	Emp #
DAWDY, BRETT D	4.7	394594	HEAPS, DAVID V	4.7	404575	OLSEN, BARTLEY Ned	4.7	392185
RICE, DOUGLAS Wayne	4.7	414638						

Equipment

HES Unit #	Distance-1 way	HES Unit #	Distance-1 way	HES Unit #	Distance-1 way	HES Unit #	Distance-1 way
10025023C	100 mile	10025037C	100 mile	10624096C	100 mile	10714289C	100 mile
10789198	100 mile	10925548	100 mile	10951243	100 mile	10998522	100 mile

Job Hours

Date	On Location Hours	Operating Hours	Date	On Location Hours	Operating Hours	Date	On Location Hours	Operating Hours
03-13-2008	8	4						
TOTAL			Total is the sum of each column separately					

Job

Formation Name						Date	Time	Time Zone	
Formation Depth (MD)	Top			Bottom		Called Out	12 - Mar - 2008	23:40	MST
Form Type			BHST			On Location	13 - Mar - 2008	03:20	MST
Job depth MD	467. ft		Job Depth TVD	467. ft		Job Started	13 - Mar - 2008	04:11	MST
Water Depth			Wk Ht Above Floor	1. ft		Job Completed	13 - Mar - 2008	06:00	MST
Perforation Depth (MD)	From			To		Departed Loc	13 - Mar - 2008	08:00	MST

Well Data

Description	New / Used	Max pressure psig	Size in	ID in	Weight lbm/ft	Thread	Grade	Top MD ft	Bottom MD ft	Top TVD ft	Bottom TVD ft
-------------	------------	-------------------	---------	-------	---------------	--------	-------	-----------	--------------	------------	---------------

Tools and Accessories

Type	Size	Qty	Make	Depth	Type	Size	Qty	Make	Depth	Type	Size	Qty	Make
Guide Shoe					Packer					Top Plug	9.625	1	HES
Float Shoe					Bridge Plug					Bottom Plug			
Float Collar					Retainer					SSR plug set			
Insert Float										Plug Container	9.625	1	HES
Stage Tool										Centralizers			

Miscellaneous Materials

Gelling Agt	Conc	Surfactant	Conc	Acid Type	Qty	Conc	%
Treatment Fld	Conc	Inhibitor	Conc	Sand Type	Size	Qty	

Fluid Data

Stage/Plug #: 1									
Fluid #	Stage Type	Fluid Name	Qty	Qty uom	Mixing Density lbm/gal	Yield ft3/sk	Mix Fluid Gal/sk	Rate bbl/min	Total Mix Fluid Gal/sk

Stage/Plug #: 1									
Fluid #	Stage Type	Fluid Name	Qty	Qty uom	Mixing Density lbm/gal	Yield ft ³ /sk	Mix Fluid Gal/sk	Rate bbl/min	Total Mix Fluid Gal/sk
1	Water Spacer		40.0	bbl	.	.0	.0	4	
2	Lead Cement	CMT - PREMIUM - CLASS G, 94 LB SK (100003685)	250.0	sacks	15.8	1.17	4.99	4	4.99
	94 lbm	CMT - PREMIUM - CLASS G REG OR TYPE V, BULK (100003685)							
	2 %	CALCIUM CHLORIDE - HI TEST PELLET (100005053)							
	0.125 lbm	POLY-E-FLAKE (101216940)							
	0.25 lbm	KWIK SEAL, SK (100064010)							
	4.986 Gal	FRESH WATER							
3	Top Out Cement	CMT - STANDARD - TYPE II CEMENT (100064006)	0	sacks	15.6	1.2	5.26	0	5.26
	94 lbm	TYPE I / II CEMENT, BULK (101439798)							
	2 %	CALCIUM CHLORIDE - HI TEST PELLET (100005053)							
	5.258 Gal	FRESH WATER							
Calculated Values		Pressures		Volumes					
Displacement	32.8	Shut In: Instant		Lost Returns	NO	Cement Slurry	80.5	Pad	
Top Of Cement	SURFACE	5 Min		Cement Returns	35	Actual Displacement	32.5	Treatment	
Frac Gradient		15 Min		Spacers	40	Load and Breakdown		Total Job	153
Rates									
Circulating	4	Mixing	4	Displacement	2	Avg. Job	3		
Cement Left In Pipe	Amount	42 ft	Reason	Shoe Joint					
Frac Ring # 1 @	ID	Frac ring # 2 @	ID	Frac Ring # 3 @	ID	Frac Ring # 4 @	ID		
The Information Stated Herein Is Correct				Customer Representative Signature					

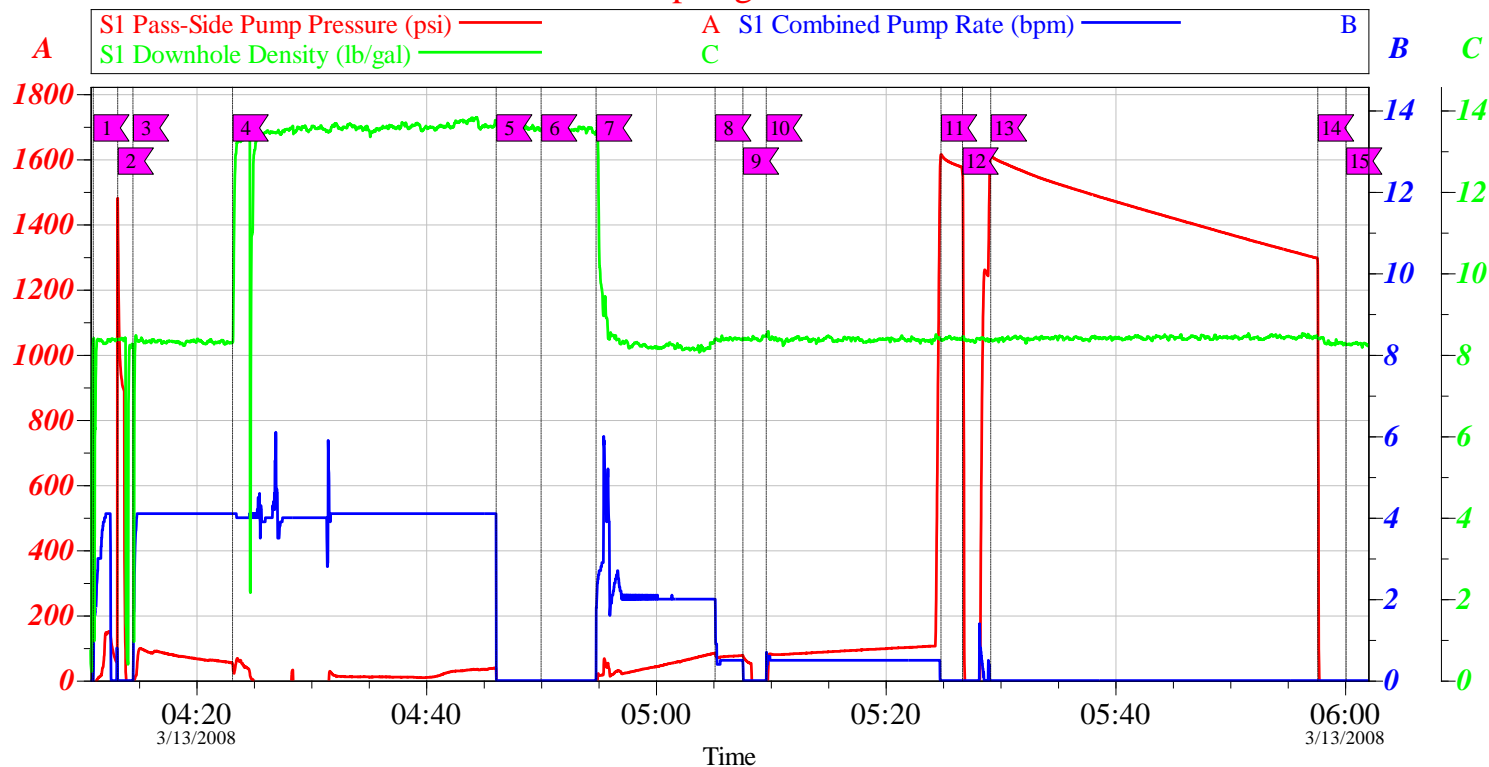
The Road to Excellence Starts with Safety

Sold To #: 343491	Ship To #: 2638546	Quote #:	Sales Order #: 5744160
Customer: WEXPRO COMPANY E-BILL		Customer Rep:	
Well Name: BW Musser	Well #: 27	API/UWI #: 05-081-07406-00	
Field:	City (SAP): UNKNOWN	County/Parish: Moffat	State: Colorado
Legal Description:			
Lat: N 0 deg. OR N 0 deg. 0 min. 0 secs.		Long: E 0 deg. OR E 0 deg. 0 min. 0 secs.	
Contractor:		Rig/Platform Name/Num: Air Drill Carl Allen 29	
Job Purpose: Cement Surface Casing			Ticket Amount:
Well Type: Development Well		Job Type: Cement Surface Casing	
Sales Person: VOLNER, THOMAS		Srvc Supervisor: HEAPS, DAVID	MBU ID Emp #: 404575

Activity Description	Date/Time	Cht #	Rate bbl/min	Volume bbl		Pressure psig		Comments
				Stage	Total	Tubing	Casing	
Call Out	03/12/2008 23:45							
Pre-Convoy Safety Meeting	03/13/2008 00:45							
Crew Leave Yard	03/13/2008 01:00							
Arrive At Loc	03/13/2008 03:20							
Safety Huddle	03/13/2008 03:30							
Rig-Up Equipment	03/13/2008 03:45							
Rig-Up Completed	03/13/2008 04:00							
Pre-Job Safety Meeting	03/13/2008 04:05							
Other	03/13/2008 04:11		4	5	5		-4.0	FILL LINES WITH WATER AHEAD
Pressure Test	03/13/2008 04:13						1477.0	
Pump Spacer	03/13/2008 04:14		4	35	40		99.0	
Pump Cement	03/13/2008 04:23		4	80.5	120.5		100.0	VERACEM 250 SKS, 13.5 PPG, 1.81 FT3/SK, 9.56 GAL/SK
Cement Returns to Surface	03/13/2008 04:44							35 BBLS OF CEMENT TO SURFACE
Shutdown	03/13/2008 04:46							
Drop Plug	03/13/2008 04:50							
Pump Displacement	03/13/2008 04:54		3	20	140.5		80.0	PUMPED WATER DISPLACEMENT
Slow Rate	03/13/2008 05:05		0.5	1	141.5		77.0	

Activity Description	Date/Time	Cht #	Rate bbl/min	Volume bbl		Pressure psig		Comments
				Stage	Total	Tubing	Casing	
Shutdown	03/13/2008 05:07							TIGHTEN SWEDGE
Pump Displacement	03/13/2008 05:09		0.5	11.5	153			
Bump Plug	03/13/2008 05:24						1614.0	
Check Floats	03/13/2008 05:26							FLOATS HELD .5 BBL BACK FULL RETURNS DURING JOB
Other	03/13/2008 05:28						1500.0	PRESSURE TEST CASING THREADS ON SWEDGE AND CASING COLLAR LEAKED DURING TEST
Other	03/13/2008 06:00							END CASING TEST
Rig-Down Equipment	03/13/2008 06:01							
Rig-Down Completed	03/13/2008 06:19							
Other	03/13/2008 06:20							WAITING TO SEE IF TOP OUT CEMENT IS NEEDED
Pre-Convoy Safety Meeting	03/13/2008 07:45							
Crew Leave Location	03/13/2008 08:00							

Rock Springs Cement



Local Event Log

1	FILL LINES	04:11:01	2	PRESSURE TEST	04:13:08	3	PUMP SPACER	04:14:28
4	PUMP CEMENT	04:23:08	5	SHUTDOWN	04:46:05	6	DROP PLUG	04:50:00
7	PUMP DISPLACEMENT	04:54:48	8	SLOW RATE	05:05:10	9	SHUT DOWN TIGHTEN CAP	05:07:34
10	PUMP DISPLACEMENT	05:09:37	11	BUMP PLUG	05:24:49	12	CHECK FLOATS	05:26:41
13	PRESSURE TEST CASING	05:29:09	14	END PRESSURE TEST	05:57:37	15	END JOB	06:00:05

Customer: WEXPRO	Job Date: 13-Mar-2008	Sales Order #: 5744160	HALLIBURTON OptiCem v6.1.1 13-Mar-08 06:11
Well Description: DEVELOPMENT	UWI: 05-081-07406-00	SUPERVISOR DAVID HEAPS	