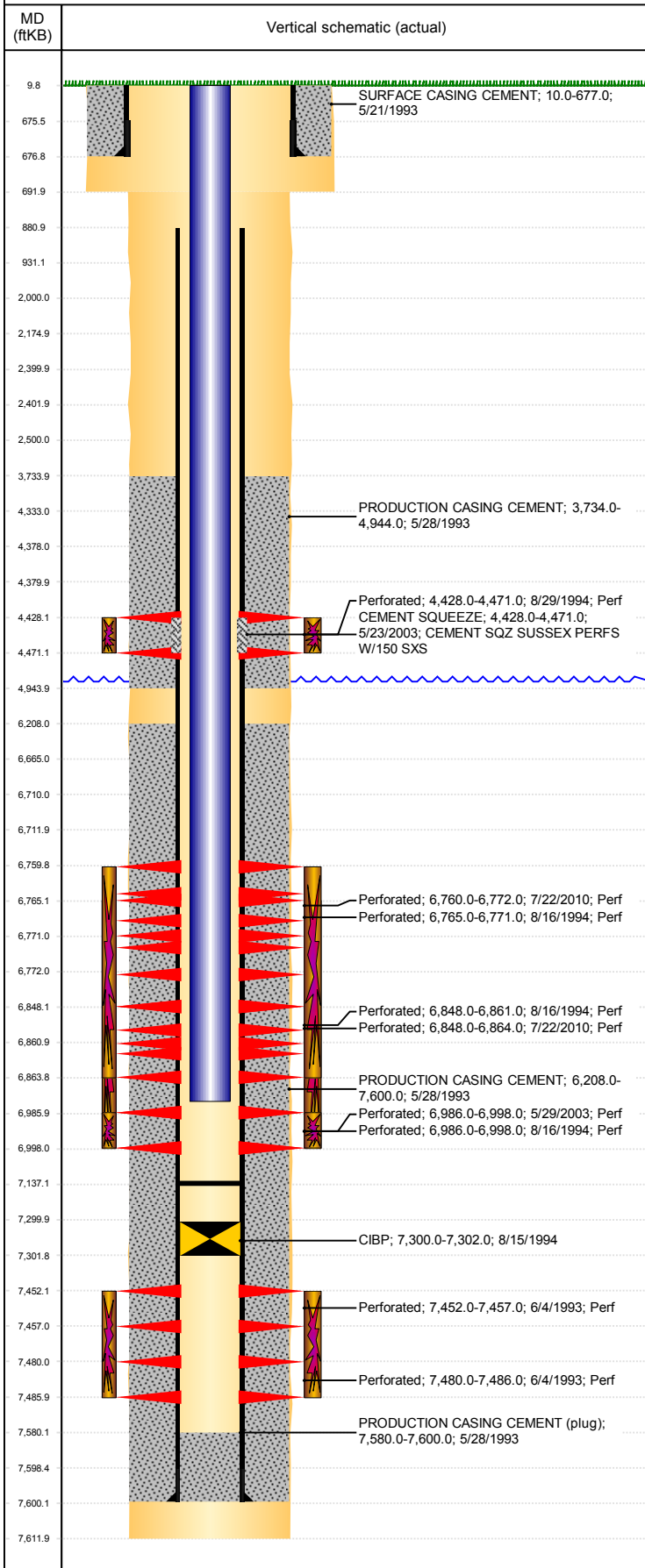


Well Name: PARKER BLUE D23-03J

VERTICAL, ORIGINAL HOLE, 1/23/2019 2:19:42 PM

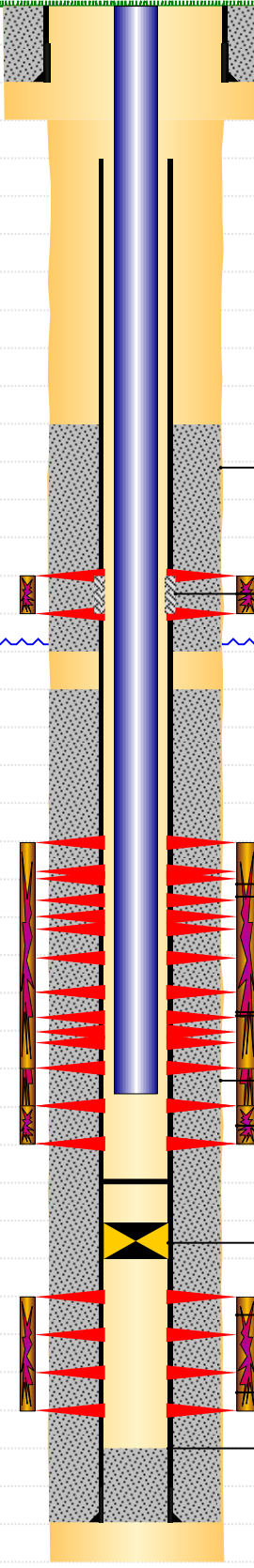


Well Header									
API 05-123-17001		Business Unit DJ BASIN			District 15		Well Config VERTICAL		
KB - GL / MSL (ft... 10.00		Spud Date 5/20/1993		P & A Date		Well Production Status SI			SoRT No
Comment									
Surface Location (Congressional)									
Qtr 3 NW	Qtr 4 SW	Section 23	Twshp 3	Twshp... N	Range 64	Rng E/... W	Actual Latitude (°) 40.20922713		Actual Longitude (°) -104.52413406
Wellbore Sections									
Section Des			Size (in)			Act Top, MD (ftKB)		Act Btm, MD (ftKB)	
SURFACE			12 1/4			10		692	
PRODUCTION			7 7/8			692		7,612	
Casing Strings									
Csg Des			Run Date		OD (in)	Wt/Len (lb/ft)	Grade	Top, MD (ftKB)	MD (ftKB)
Surface			5/21/1993		8 5/8	24.00	J-55	10.0	677.0
Production			5/28/1993		3 1/2	7.70	M-75	10.0	7,600.0
Cement									
Des					Start Date		Top (ftKB)		Btm (ftKB)
SURFACE CASING CEMENT					5/21/1993		10.0		677.0
PRODUCTION CASING CEMENT					5/28/1993		3,734.0		4,944.0
PRODUCTION CASING CEMENT					5/28/1993		6,208.0		7,600.0
CEMENT SQUEEZE					5/23/2003		4,428.0		4,471.0
Zone Statuses									
Zone Name		Status Date	Status	Fluid Type	Job			Prod Method	
SUSSEX		9/12/1994	PR	Oil	RECOMPLETION, 8/16/1994 00:00			Flowing	
SUSSEX		5/23/2003	AB		RE-FRAC, 5/21/2003 00:00				
J SAND		9/15/2011	PR	Water					
J SAND		10/27/2016	SI					Flowing	
NIOBRARA-CO...		2/5/2010	PR	Water					
CODELL		2/5/2010	PR	Water					
CODELL		10/27/2016	SI					Flowing	
NIOBRARA		2/5/2010	PR	Water					
NIOBRARA		8/12/2010	PR	Oil	RE-FRAC, 7/21/2010 06:00				
Perforation Data									
Linked Zone			Bnch/Stg	Entered Shot Total	Top (ftKB)		Btm (ftKB)		Date
SUSSEX, ORIGINAL HOLE				28	4,428.00		4,471.00		8/29/1994
NIOBRARA, ORIGINAL HOLE			B	48	6,760.00		6,772.00		7/22/2010
NIOBRARA, ORIGINAL HOLE			B	4	6,765.00		6,771.00		8/16/1994
NIOBRARA, ORIGINAL HOLE			C	2	6,848.00		6,861.00		8/16/1994
NIOBRARA, ORIGINAL HOLE			C	64	6,848.00		6,864.00		7/22/2010
CODELL, ORIGINAL HOLE				8	6,986.00		6,998.00		8/16/1994
CODELL, ORIGINAL HOLE				48	6,986.00		6,998.00		5/29/2003
J SAND, ORIGINAL HOLE				21	7,452.00		7,457.00		6/4/1993
J SAND, ORIGINAL HOLE				25	7,480.00		7,486.00		6/4/1993
Stimulation Intervals									
Zone				Start Date		Top (ftKB)		Btm (ftKB)	
SUSSEX, ORIGINAL HOLE				8/30/1994		4,428.0		4,471.0	
NIOBRARA, ORIGINAL HOLE				8/11/2010		6,760.0		6,864.0	
NIOBRARA-CODELL, ORIGINAL HOLE				8/19/1994		6,765.0		6,998.0	
CODELL, ORIGINAL HOLE				6/3/2003		6,986.0		6,998.0	
J SAND, ORIGINAL HOLE				6/5/1993		7,452.0		7,486.0	
Other In Hole									
Run Date		Des				OD (in)	Top (ftKB)		Btm (ftKB)
8/15/1994		CIBP				3	7,300.0		7,302.0
Logs									
Date		Type				Top, MD (ftKB)		Btm, MD (ftKB)	
5/27/1993		INDUCTION				676.0		7,606.0	
5/27/1993		NEUTRON/DENSITY				4,300.0		7,572.0	
6/4/1993		CEMENT BOND				3,550.0		7,580.0	
2/19/2018		GYRO				10.0		5,100.0	

Well Name: PARKER BLUE D23-03J

VERTICAL, ORIGINAL HOLE, 1/23/2019 2:19:42 PM

Plug Back Total Depths

MD (ftKB)	Vertical schematic (actual)	Date	Type	Com	Depth (ftKB)
		5/28/1993	LATCH DOWN COLLAR	LATCH DOWN COLLAR	7,580.0
		8/18/2010	FILL	137' OF RAT HOLE BELOW THE CODELL.	7,137.0
9.8					
675.5					
676.8					
691.9					
880.9					
931.1					
2,000.0					
2,174.9					
2,399.9					
2,401.9					
2,500.0					
3,733.9					
4,333.0					
4,378.0					
4,379.9					
4,428.1					
4,471.1					
4,943.9					
6,208.0					
6,665.0					
6,710.0					
6,711.9					
6,759.8					
6,765.1					
6,771.0					
6,772.0					
6,848.1					
6,860.9					
6,863.8					
6,985.9					
6,998.0					
7,137.1					
7,299.9					
7,301.8					
7,452.1					
7,457.0					
7,480.0					
7,485.9					
7,580.1					
7,598.4					
7,600.1					
7,611.9					