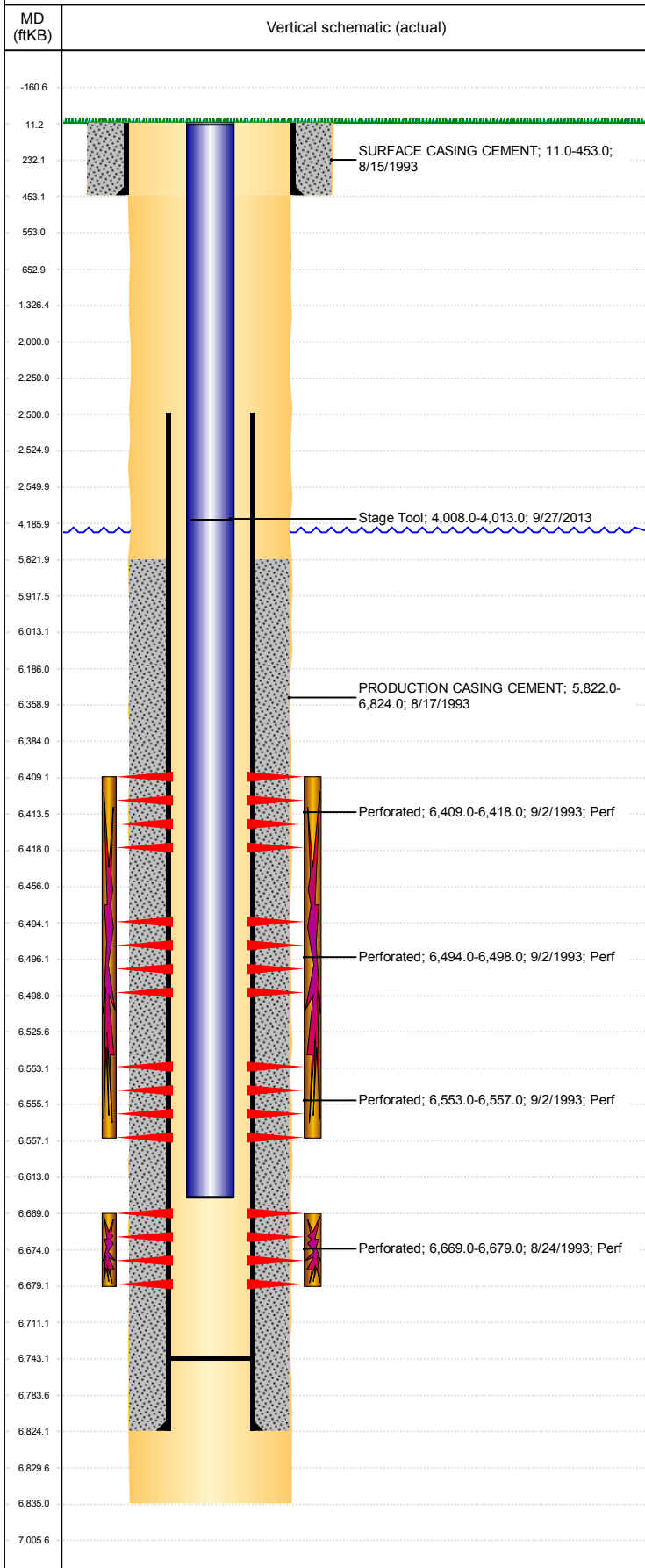


Well Name: FRANK 07-04

VERTICAL, ORIGINAL HOLE, 1/23/2019 7:57:20 AM



Well Header										
API 05-123-17266			Business Unit DJ BASIN			District 15		Well Config VERTICAL		
KB - GL / MSL (ft... 11.00		Spud Date 8/14/1993		P & A Date		Well Production Status PR			SoRT No	
Comment comm w/1 & 12/2 9/01										
Surface Location (Congressional)										
Qtr 3 NW	Qtr 4 NW	Section 7	Twنشp 4	Twنش... N	Range 63	Rng E/... W	Actual Latitude (°) 40.33289902	Actual Longitude (°) -104.48812821		
Wellbore Sections										
Section Des			Size (in)			Act Top, MD (ftKB)		Act Btm, MD (ftKB)		
SURFACE			12 1/4			11		453		
PRODUCTION			7 7/8			453		6,835		
Casing Strings										
Csg Des			Run Date		OD (in)	Wt/Len (lb/ft)	Grade	Top, MD (ftKB)	MD (ftKB)	
Surface			8/15/1993		8 5/8	23.00		11.0	453.0	
Production			8/17/1993		4 1/2	11.60	M-75	11.0	6,824.0	
Cement										
Des					Start Date		Top (ftKB)		Btm (ftKB)	
SURFACE CASING CEMENT					8/15/1993		11.0		453.0	
PRODUCTION CASING CEMENT					8/17/1993		5,822.0		6,824.0	
Zone Statuses										
Zone Name		Status Date	Status	Fluid Type	Job				Prod Method	
NIOBRARA		9/30/1993	PR	Gas	DRILLING/COMPLETION - ORIGINAL, 8/14/1993...					
CODELL		9/30/1993	PR	Gas	DRILLING/COMPLETION - ORIGINAL, 8/14/1993...					
Perforation Data										
Linked Zone			Bnch/Stg	Entered Shot Total	Top (ftKB)		Btm (ftKB)		Date	
NIOBRARA, ORIGINAL HOLE			A	8	6,409.00		6,418.00		9/2/1993	
NIOBRARA, ORIGINAL HOLE			B	10	6,494.00		6,498.00		9/2/1993	
NIOBRARA, ORIGINAL HOLE			C	6	6,553.00		6,557.00		9/2/1993	
CODELL, ORIGINAL HOLE				20	6,669.00		6,679.00		8/24/1993	
Stimulation Intervals										
Zone					Start Date		Top (ftKB)		Btm (ftKB)	
NIOBRARA, ORIGINAL HOLE					9/8/1993		6,409.0		6,557.0	
CODELL, ORIGINAL HOLE					8/27/1993		6,669.0		6,679.0	
Other In Hole										
Run Date		Des				OD (in)	Top (ftKB)	Btm (ftKB)		
Logs										
Date		Type					Top, MD (ftKB)	Btm, MD (ftKB)		
8/17/1993		Compensated Density					3,370.0	6,828.0		
8/17/1993		Induction					453.0	6,830.0		
8/24/1993		Cement Bond					5,700.0	6,765.0		
Plug Back Total Depths										
Date		Type			Com				Depth (ftKB)	
8/17/1993		LATCH DOWN COLLAR							6,782.0	
3/12/2008		FILL							6,743.0	