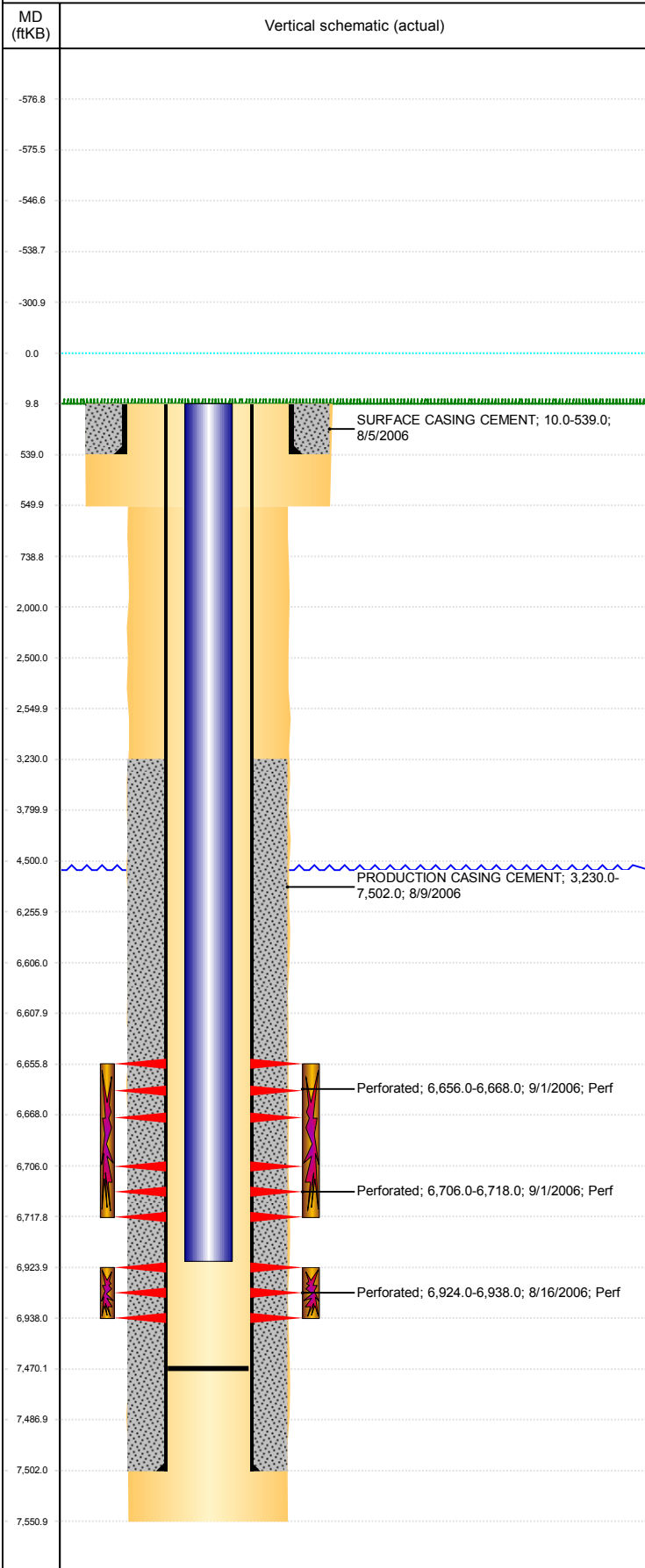


Well Name: VOLLEY STATE D10-13

VERTICAL, ORIGINAL HOLE, 1/22/2019 2:02:30 PM



Well Header									
API 05-123-24042		Business Unit DJ BASIN		District 15		Well Config VERTICAL			
KB - GL / MSL (ft... 10.00		Spud Date 8/5/2006		P & A Date		Well Production Status PR		SoRT No	
Comment CIFP PUSH TO 6735'									
Surface Location (Congressional)									
Qtr 3 SW	Qtr 4 SW	Section 10	Twonshp 3	Twonsh... N	Range 64	Rng E... W	Actual Latitude (°) 40.23432689	Actual Longitude (°) -104.54482101	
Wellbore Sections									
Section Des		Size (in)		Act Top, MD (ftKB)		Act Btm, MD (ftKB)			
SURFACE		12 1/4		10		550			
PRODUCTION		7 7/8		550		7,551			
Casing Strings									
Csg Des		Run Date		OD (in)	Wt/Len (lb/ft)	Grade	Top, MD (ftKB)	MD (ftKB)	
Surface Casing		8/5/2006		8 5/8	24.00	J-55	10.0	539.0	
Production		8/9/2006		4 1/2	11.60	M-80	10.0	7,502.0	
Cement									
Des		Start Date		Top (ftKB)		Btm (ftKB)			
SURFACE CASING CEMENT		8/5/2006		10.0		539.0			
PRODUCTION CASING CEMENT		8/9/2006		3,230.0		7,502.0			
Zone Statuses									
Zone Name	Status Date	Status	Fluid Type	Job			Prod Method		
CODELL	9/3/2006	PR		DRILLING/COMPLETION - ORIGINAL, 7/1/2006...					
NIOBRARA	9/3/2006	PR		DRILLING/COMPLETION - ORIGINAL, 7/1/2006...					
Perforation Data									
Linked Zone	Bnch/Stg	Entered Shot Total	Top (ftKB)	Btm (ftKB)	Date				
NIOBRARA, ORIGINAL HOLE	A	72	6,656.00	6,668.00	9/1/2006				
NIOBRARA, ORIGINAL HOLE	B	72	6,706.00	6,718.00	9/1/2006				
CODELL, ORIGINAL HOLE		56	6,924.00	6,938.00	8/16/2006				
Stimulation Intervals									
Zone		Start Date		Top (ftKB)		Btm (ftKB)			
NIOBRARA, ORIGINAL HOLE		9/1/2006		6,656.0		6,718.0			
CODELL, ORIGINAL HOLE		9/1/2006		6,924.0		6,938.0			
		9/1/2006							
Other In Hole									
Run Date		Des		OD (in)	Top (ftKB)	Btm (ftKB)			
Logs									
Date		Type				Top, MD (ftKB)	Btm, MD (ftKB)		
8/9/2006		COMPENSATED DENSITY				539.0	7,497.0		
8/9/2006		DIFL/DENS/GR/GRD/CAL				539.0	7,517.0		
8/16/2006		CBL/CCL/GR				2,834.0	7,468.0		
3/12/2018		GYRO				10.0	6,800.0		
Plug Back Total Depths									
Date		Type	Com			Depth (ftKB)			
8/9/2006		FLOAT SHOE	FLOAT SHOE			7,487.0			
8/16/2006			DEPTH-LOGGER/CBL			7,470.0			