

FINAL WELLBORE DIAGRAM

Completed

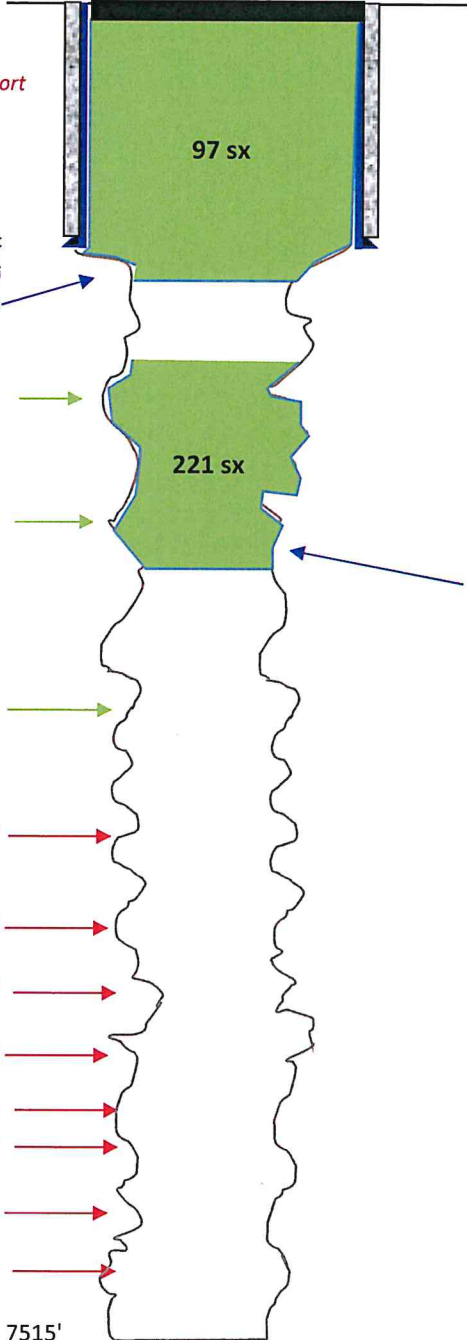
Final P&A

Geology

\*Est tops from completion report

\*Est tops from Prog

Cut off 8-5/8" surf csg 6' below GL.



Elevation: 4763' GL, 4771' KB

Location: 652' FSL, 663' FWL

SWSW Sec 15, T4N, R63W

Weld County, CO

Field: Wattenberg

Zone: J-Sand, Lakota, Morrison

Spud Date: 11/14/1977

API: 05-123-09341

Pump 97 sx plug 1/2 in, 1/2 out  
of surface casing w/15.8# Class G  
cement from 350' to surface

Top of Fox Hills @

Bottom of Fox Hills @

Top of Sussex @

Top of Niobrara @ 6396'

Top of Codell/ Carlile @ 6684'

Top of D-Sand @ 7083'

Top of J-Sand @ 7144'

Top of Skull Creek @ 7331'

Top of Dakota @ 7380'

Top of Lakota @ 7418'

Top of Morrison @ 7509'

TD: 7515'

Surface Casing:

8-5/8", 24# set @ 178' in 12-1/4" OH

Cement w/ 140 sx

P&A: 11/27/1977

10 sack plug @ 30' to surface

80 sack plug @ 390' - 150'

Pump 221 sx OH plug w/15.8# Class G cmt at 1,592'  
Tagged TOC @ 525'

During this final P&A process, it took 6 days, with  
major fluid losses and hard drilling to reach 1,885'  
depth. Obtained permission from COGCC to stop  
@ 1,885'.

J Sand: DST - Recovered 10' mud, strong blow

Lakota DST: Weak blow, 3' mud recovered

Production Casing:

7-7/8" Open Hole