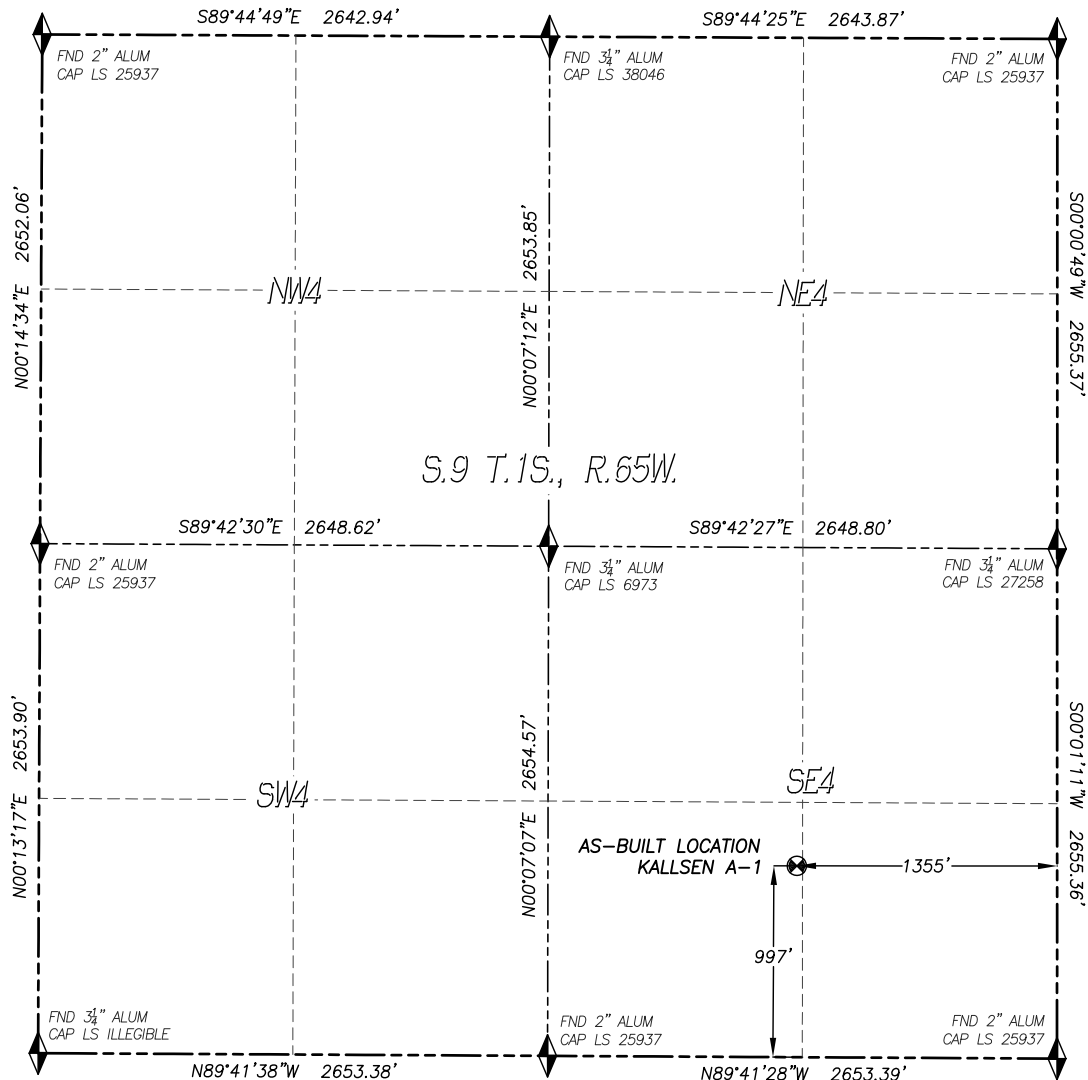


# WELL AS-BUILT SURVEY

## KALLSEN A-1

SECTION 9, TOWNSHIP 1 SOUTH, RANGE 65 WEST OF THE 6TH P.M.

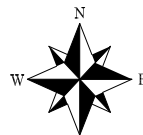


IN ACCORDANCE WITH A REQUEST FROM CONFLUENCE RESOURCES., DALEY LAND SURVEYING, INC. HAS DETERMINED THE SURFACE LOCATION OF THE KALLSEN A-1 WELL TO BE 997' FSL, 1355' FEL, AS MEASURED AT NINETY (90) DEGREES FROM THE SECTION LINES OF SECTION 9, TOWNSHIP 1 SOUTH, RANGE 65 WEST, OF THE 6TH PRINCIPAL MERIDIAN, ADAMS COUNTY, COLORADO.

I HEREBY STATE THAT THIS WELL AS-BUILT SURVEY WAS PREPARED BY ME OR UNDER MY DIRECT SUPERVISION, THAT THE WORK WAS COMPLETED ON 9/18/2018 FOR AND ON BEHALF OF CONFLUENCE RESOURCES., AND THAT THIS MAP DOES NOT REPRESENT A BOUNDARY SURVEY, IT IS NOT A LAND SURVEY PLAT OR AN IMPROVEMENT SURVEY PLAT AND IT IS NOT TO BE RELIED UPON FOR THE ESTABLISHMENT OF FENCE, BUILDING OR OTHER FUTURE IMPROVEMENT LINES.

### NOTES:

- 1) BEARINGS FOR THIS MAP ARE ASSUMED AND BASED UPON GPS OBSERVATIONS MADE BETWEEN MONUMENTS LOCATED AT THE EAST QUARTER CORNER AND SOUTHEAST CORNER OF SECTION 9, T.1S., R.65W.
- 2) HORIZONTAL DATUM IS NAD83.
- 3) VERTICAL DATUM IS NAVD88 AND ORIGINATES FROM THE LOCAL C.O.R.S. NETWORK, UTILIZING THE GEOID12A MODEL.
- 4) SURFACE USE: RANGELAND.
- 5) INST. OPERATOR: SCOTT ESTABROOKS.
- 6) WELL LOCATION IS PRIOR TO P/A.

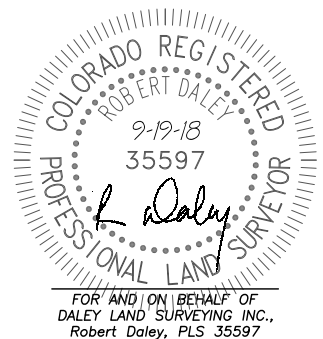


0 1000  
SCALE: 1" = 1000'

### NAD 83 LATITUDE AND LONGITUDE

#### SURFACE LOCATION:

LATITUDE: N39.97502°  
LONGITUDE: W104.66437°  
ELEV: 5172'  
PDOP: 1.6  
QTR/QTR: SW4/SE4



# LOCAATION PICTURES

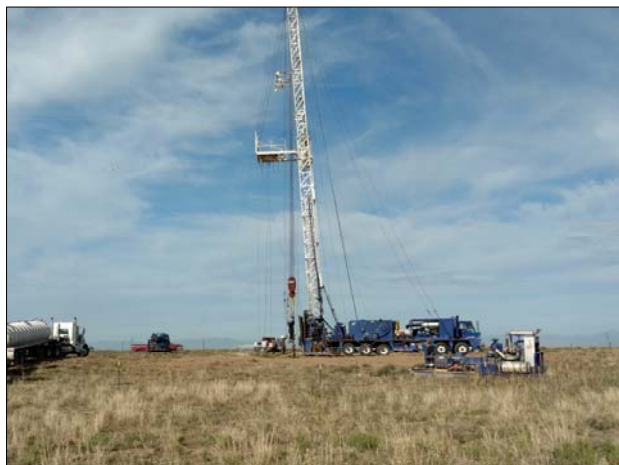
## KALLSEN A-1

SECTION 9, TOWNSHIP 1 SOUTH, RANGE 65 WEST OF THE 6TH P.M.

DATE: 9/18/18



LOOKING NORTH



LOOKING WEST



LOOKING EAST



LOOKING SOUTH