



RADIAL BOND
GAMMA RAY
CCL

Company		CONFLUENCE					
Well		KALLSEN A-1					
Field		WATTENBERG					
County		ADAMS					
State		COLORADO					
Location:		API # : 05-001-09073 SWSE 990'FSL 1440'FEL					
Permanent Datum		GL					
Log Measured From		KB					
Drilling Measured From		KB					
SEC 9		TWP 1S					
RGE 65W		Elevation 5167'					
Other Services		K.B. 5176' D.F. 5176' G.L. 5167'					
Date		9-20-18					
Run Number		ONE					
Depth Driller							
Depth Logger							
Bottom Logged Interval		7900'					
Top Log Interval		SURFACE					
Open Hole Size		4.5					
Type Fluid		WATER					
Density / Viscosity		8.6					
Max. Recorded Temp.		NA					
Estimated Cement Top		7315'					
Time Well Ready		NA					
Time Logger on Bottom		NA					
Equipment Number		058					
Location		WINDSOR COLORADO					
Recorded By		RYAN ALLES					
Witnessed By		MARK VILLIREAL					
Borehole Record		Tubing Record					
Run Number	Bit	From	To	Size	Weight	From	To
Casing Record	Size		Wgt/Ft		Top		Bottom
Surface String	8.63		24		SURFACE		305'
Prot. String							
Production String	4.5		11.6		SURFACE		8149'
Liner							

<<< Fold Here >>>

All interpretations are opinions based on inferences from electrical or other measurements and we cannot and do not guarantee the accuracy or correctness of any interpretation, and we shall not, except in the case of gross or willful negligence on our part, be liable or responsible for any loss, costs, damages, or expenses incurred or sustained by anyone resulting from any interpretation made by any of our officers, agents or employees. These interpretations are also subject to our general terms and conditions set out in our current Price Schedule.

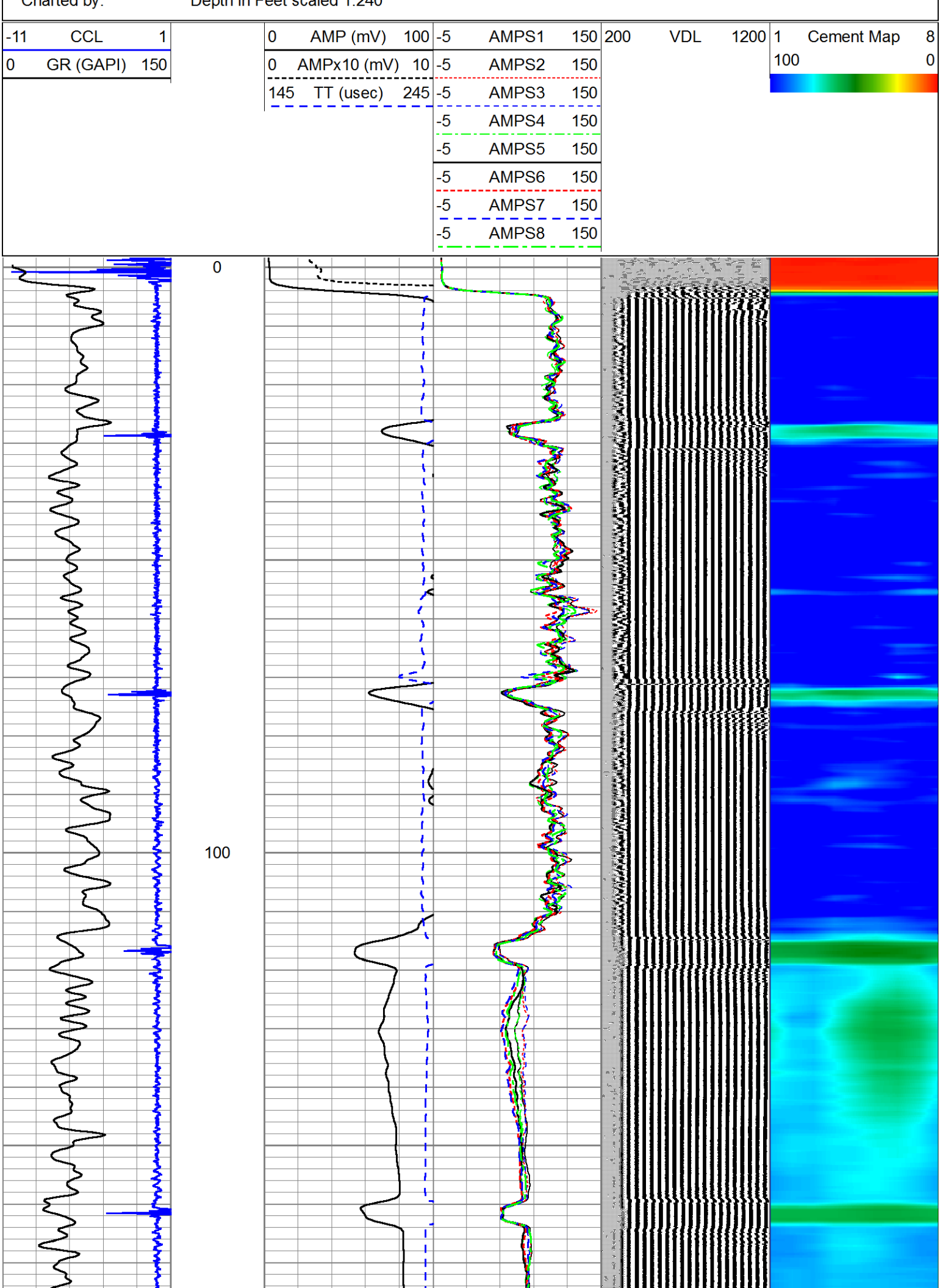
Comments

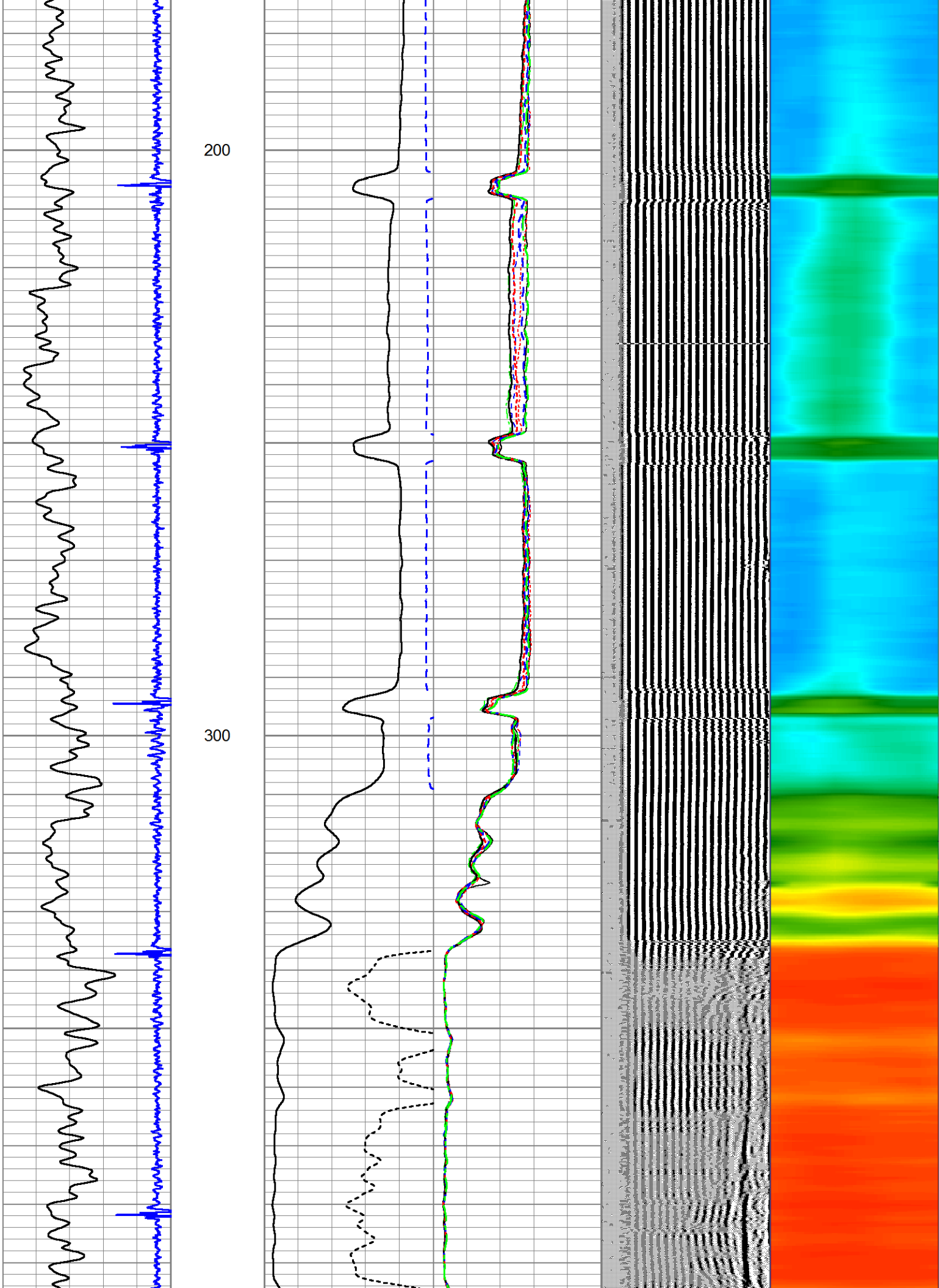
RAN CEMENT BOND LOG TO VERIFY CEMENT
THANK YOU FOR USING CUTTERS WIRELINE

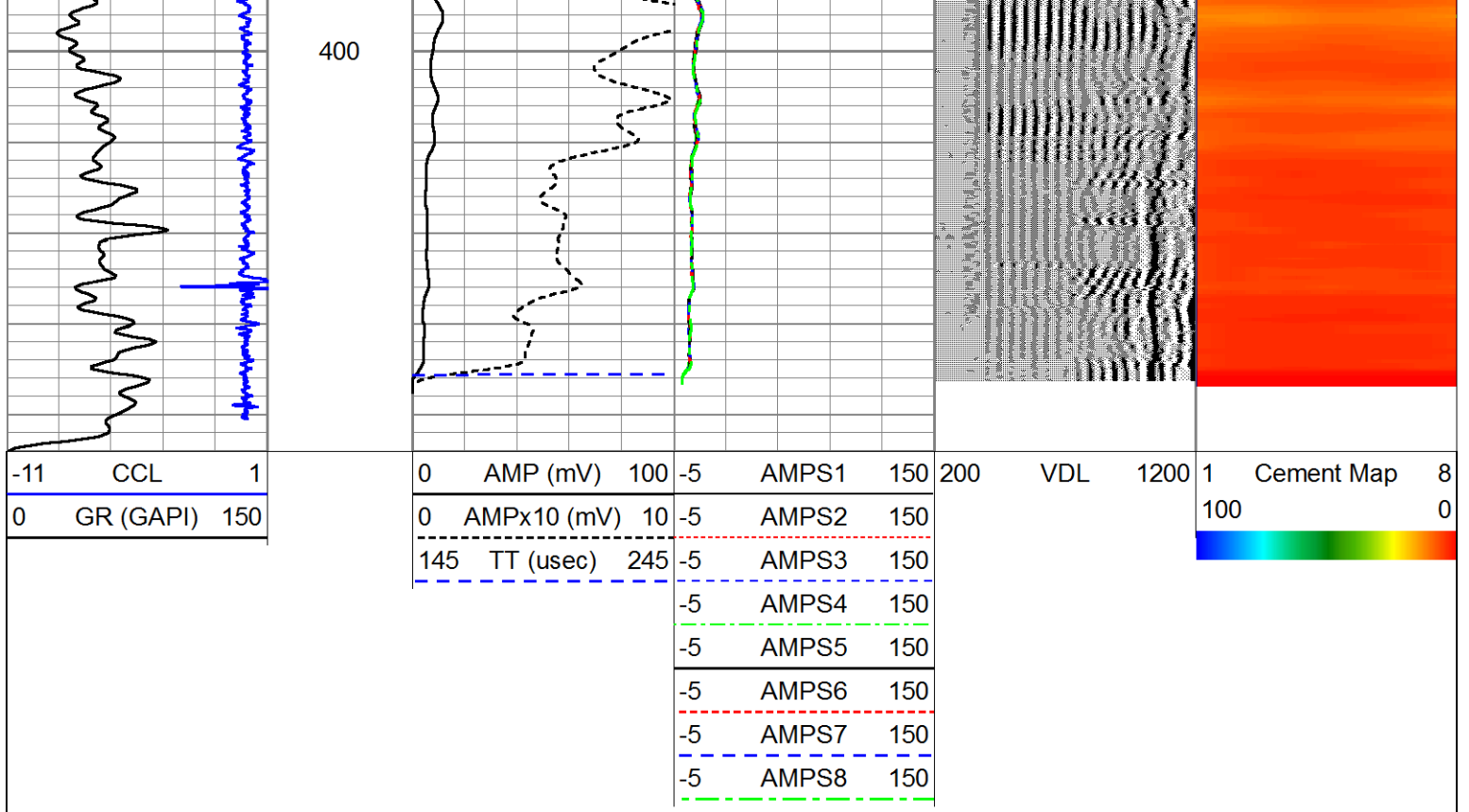
Sensor	Offset (ft)	Schematic	Description	Len (ft)	OD (in)	Wt (lb)
			Standard Standard Cable Head	1.00	1.69	1.00

					</	

Database File:	kallsen a-1.db
Dataset Pathname:	pass15
Presentation Format:	scbl_inc
Creation:	Thu Sep 20 09:13:24 2018 by Log 7.0 B1
Charted by:	Depth in Feet scaled 1:240







Company CONFLUENCE
Well KALLSEN A-1
Field WATTENBERG
County ADAMS
State COLORADO