

HALLIBURTON

iCem[®] Service

TERRA ENERGY PARTNERS

For: Terra

Date: Monday, August 06, 2018

NR 311-3 Surface PJR

API# 05-045-23903-00

Sincerely,

Grand Junction Cement Engineering

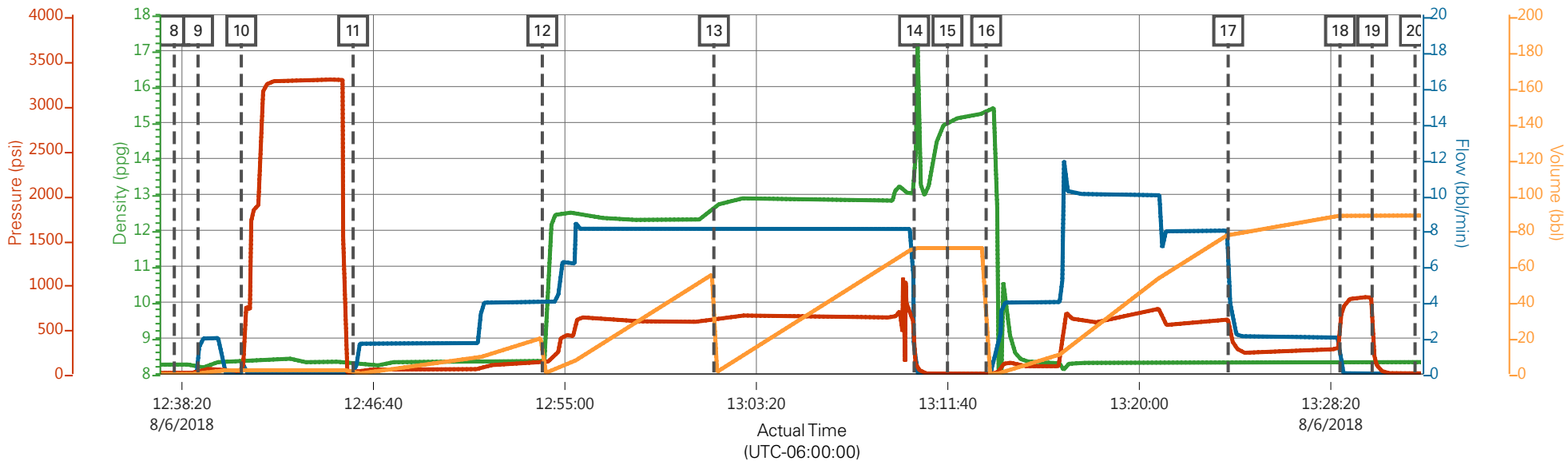
2.0 Real-Time Job Summary

2.1 Job Event Log

Type	Seq. No.	Graph Label	Date	Time	Source	Comb Pump Rate (bbl/min)	DH Density (ppg)	PS Pump Press (psi)	Pump Stg Tot (bbl)	Comments
Event	1	Call Out	08/06/2018	05:00:00	USER					REQUESTED ON LOCATION TIME 1000
Event	2	Depart Yard Safety Meeting	08/06/2018	07:00:00	USER					ALL HES EMPLOYEES
Event	3	Arrive At Loc	08/06/2018	09:45:00	USER					RIG PREPARING TO RUN CASING UPON HES ARRIVAL
Event	4	Comment	08/06/2018	09:50:00	USER					COMPANY REP OFFERED SDS. WATER TEST: TEMP: 69 PH: 7 CHLORIDES: 0. MUD SCALES CALIBRATED ON DRINKING WATER PRIOR TO STARTING JOB
Event	5	Assessment Of Location Safety Meeting	08/06/2018	10:00:00	USER					ALL HES EMPLOYEES
Event	6	Pre-Rig Up Safety Meeting	08/06/2018	10:10:00	USER					ALL HES EMPLOYEES
Event	7	Pre-Job Safety Meeting	08/06/2018	11:30:00	USER					ALL HES EMPLOYEES AND RIG CREW, RIG CIRCULATED @ 200 GPM PRIOR TO THE JOB DUT TO CELLAR PUMP NOT KEEPING UP
Event	8	Start Job	08/06/2018	12:38:00	COM4					TD: 1137 TP: 1131.5 SJ: 44.51 CSG: 9 5/8 36# J-55 OH: 13 1/2 MUD WT: 9.7 PPG
Event	9	Prime Lines	08/06/2018	12:39:02	COM4	2.0	8.33	59	2.0	PRIME LINES WITH 2 BBLS FRESH WATER
Event	10	Test Lines	08/06/2018	12:40:55	COM4	0.0	8.33	3264	2.0	PRESSURE TEST OK
Event	11	Pump Fresh Water Spacer	08/06/2018	12:45:47	COM4	4.0	8.33	120	20	PUMP 20 BBL FRESH WATER SPACER

Event	12	Pump Lead Cement	08/06/2018	12:54:01	COM4	8.0	12.3	620	53	125 SKS 12.3 PPG 2.38 YIELD 13.77 GAL/SK LEAD CEMENT WEIGHT VERIFIED VIA PRESSURIZED MUD SCALES
Event	13	Pump Tail Cement	08/06/2018	13:01:29	COM4	8.0	12.8	650	65.8	175 SKS 12.8 PPG 2.11 YIELD 11.78 GAL/SK TAIL CEMENT WEIGHT VERIFIED VIA PRESSURIZED MUD SCALES
Event	14	Shutdown	08/06/2018	13:10:12	USER					SHUTDOWN TO DROP TOP PLUG
Event	15	Drop Top Plug	08/06/2018	13:11:39	USER					PLUG AWAY NO PROBLEMS, WITNESSED BY COMPANY REP. WASHED UP ON TOP OF THE PLUG
Event	16	Pump Displacement	08/06/2018	13:13:20	COM4	10.0	8.33	730	74	FRESH WATER
Event	17	Slow Rate	08/06/2018	13:23:52	USER	2.0	8.33	280	10	SLOW RATE TO BUMP PLUG
Event	18	Bump Plug	08/06/2018	13:28:44	COM4	2.0	8.33	856	84	PSI BEFORE BUMPING PLUG @ 280 BUMPED PLUG UP TO 856 PSI
Event	19	Check Floats	08/06/2018	13:30:08	USER					FLOATS HELD, 1/2 BBL BACK TO TANKS
Event	20	End Job	08/06/2018	13:32:00	COM4					GOOD RETURNS THROUGHOUT JOB, PIPE STATIC THROUGHOUT JOB, 24 BBLs OF CEMENT TO SURFACE. RIG USED 40#s OF SUGAR
Event	21	Pre-Rig Down Safety Meeting	08/06/2018	13:40:00	USER					ALL HES EMPLOYEES
Event	22	Rig Down Lines	08/06/2018	13:45:00	USER					
Event	23	Depart Location Safety Meeting	08/06/2018	14:25:00	USER					ALL HES EMPLOYEES
Event	24	Crew Leave Location	08/06/2018	14:30:00	USER					THANK YOU FOR USING HALLIBURTON CEMENT, DUSTIN SMITH AND CREW

TEP - CLOUGH NR 311-3 - 9 5/8 SURFACE



— DH Density (ppg)
 — Comb Pump Rate (bbl/min)
 — PS Pump Press (psi)
 — Pump Stg Tot (bbl)

Description	Actual Time (UTC-06:00:00)	DH Density (ppg)	Comb Pump Rate (bbl/min)	PS Pump Press (psi)	Pump Stg Tot (bbl)
8 Start Job	12:38:00	8.26	0.00	12.00	0.00
9 Prime Lines	12:39:02	8.21	0.90	23.00	0.00
10 Test Lines	12:40:55	8.34	0.00	34.00	2.00
11 Pump Fresh Water Spacer	12:45:47	8.28	0.00	11.00	0.00
12 Pump Lead Cement	12:54:01	8.33	4.00	122.00	0.00
13 Pump Tail Cement	13:01:29	12.66	8.10	613.00	0.10
14 Shutdown	13:10:12	13.03	0.10	208.00	70.10
15 Drop Top Plug	13:11:39	15.03	0.00	1.00	70.10
16 Pump Displacement	13:13:20	15.31	0.00	2.00	0.00
17 Slow Rate	13:23:52	8.32	8.00	611.00	77.60
18 Bump Plug	13:28:44	8.32	1.80	525.00	88.20
19 Check Floats	13:30:08	8.34	0.00	856.00	88.20
20 End Job	13:32:00	8.33	0.00	6.00	88.20

TEP - CLOUGH NR 311-3 - 9 5/8 SURFACE

