

NOTE:

- Distances referenced on plat to section lines are perpendicular.

T5S, R96W, 6th P.M.

Caerus Oil & Gas LLC

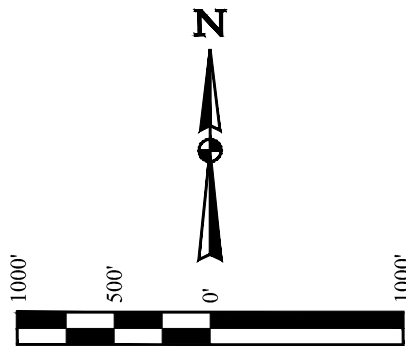
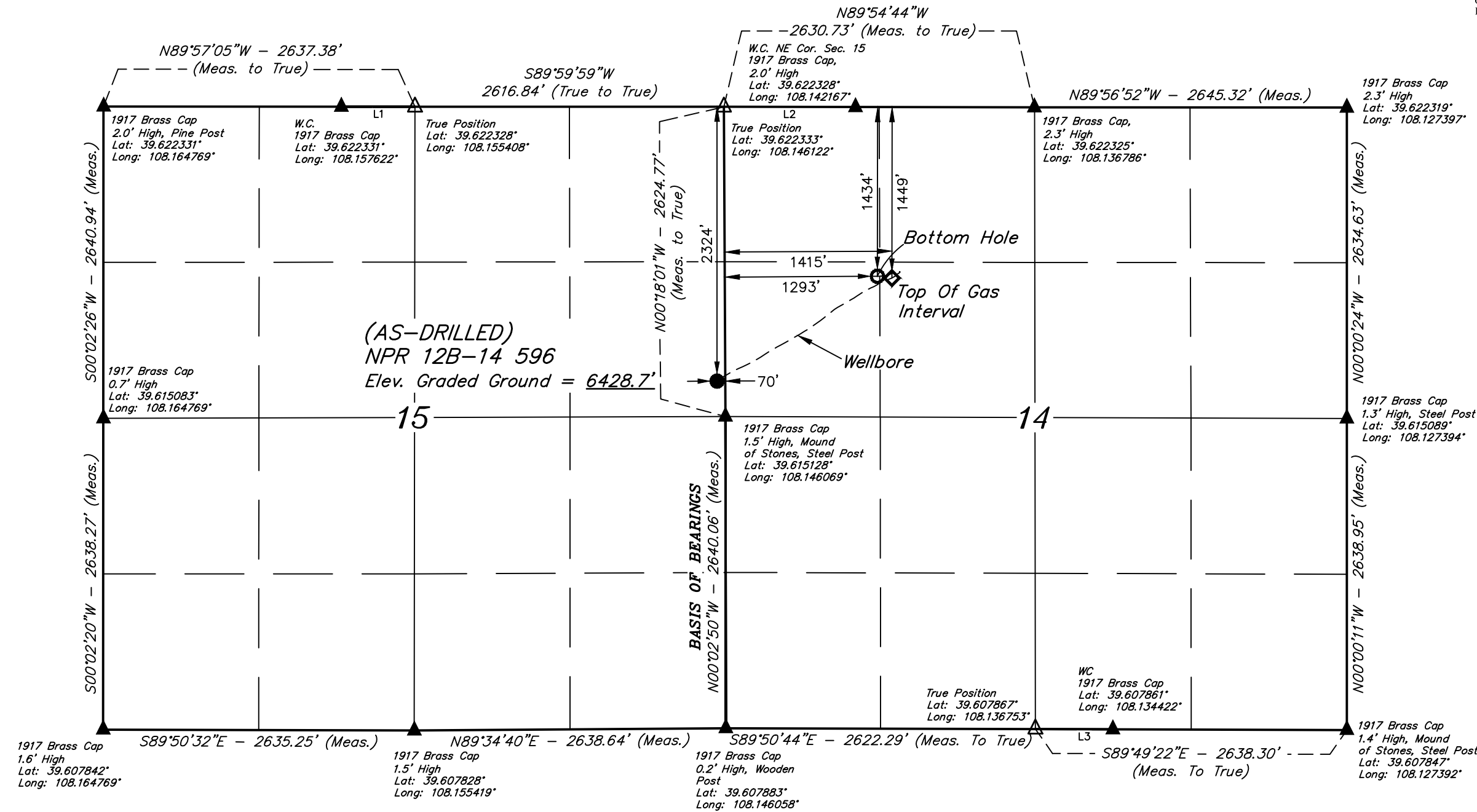
(AS-DRILLED) NPR 12B-14 596  
SE 1/4 NE 1/4, SECTION 15, T5S, R96W, 6th P.M.  
GARFIELD COUNTY, COLORADO

BASIS OF BEARINGS

BEARINGS ARE A BASED ASSUMPTION THAT THE EAST LINE OF THE SOUTHWEST 1/4 OF SECTION 15 BEARS N00°02'50"W. MONUMENTS DESCRIBED HEREON.

BASIS OF ELEVATION

SPOT ELEVATION AT THE NORTHWEST CORNER OF SECTION 30, T5S, R95W, 6th P.M., TAKEN FROM THE FORKED GULCH QUADRANGLE, GARFIELD COUNTY, COLORADO, 7.5 MINUTE QUAD. (TOPOGRAPHIC MAP) PUBLISHED BY THE UNITED STATES DEPARTMENT OF THE INTERIOR, GEOLOGICAL SURVEY. SAID ELEVATION IS MARKED AS BEING 5966 FEET.



LINE TABLE		
LINE	DIRECTION	LENGTH
L1	S89°57'05"E	623.70'
L2	S89°54'44"E	1114.74'
L3	S89°49'22"E	656.70'

CERTIFICATE OF SURVEY  
THIS IS TO CERTIFY THAT THE ABOVE PLAT WAS PREPARED AND THE LOCATION AS SHOWN WAS STAKED ON THE GROUND FROM FIELD NOTES OF ACTUAL SURVEYS MADE BY ME OR UNDER MY SUPERVISION AND THAT THE SAME ARE TRUE AND CORRECT TO THE BEST OF MY KNOWLEDGE AND BELIEF.  
REGISTERED LAND SURVEYOR  
REGISTRATION NO. 19810  
STATE OF COLORADO  
Dennis Petty, B.H.  
01-08-19

LEGEND:

- = AS-DRILLED WELLHEAD.
- ◇ = TOP OF GAS INTERVAL.
- = BOTTOM HOLE.
- ▲ = SECTION CORNERS LOCATED. (NAD 83)
- △ = SECTION CORNERS RE-ESTABLISHED. (Not Set on Ground.) (NAD 83)

NOTE:

WELLBORE DATA PROVIDED  
BY Caerus Oil & Gas LLC.

PDOP = 5.0

NAD 83 (SURFACE LOCATION)	NAD 83 (TOP OF GAS INTERVAL)	NAD 83 (BOTTOM HOLE)
LATITUDE = 39°36'57.44" (39.615955)	LATITUDE = 39°37'06.07" (39.618353)	LATITUDE = 39°37'06.22" (39.618394)
LONGITUDE = 108°08'46.77" (108.146325)	LONGITUDE = 108°08'27.86" (108.141071)	LONGITUDE = 108°08'29.42" (108.141506)
NAD 27 (SURFACE LOCATION)	NAD 27 (TOP OF GAS INTERVAL)	NAD 27 (BOTTOM HOLE)
LATITUDE = 39°36'57.52" (39.615979)	LATITUDE = 39°37'06.15" (39.618376)	LATITUDE = 39°37'06.30" (39.618417)
LONGITUDE = 108°08'44.48" (108.145689)	LONGITUDE = 108°08'25.57" (108.140436)	LONGITUDE = 108°08'27.13" (108.140870)
UTM NAD 27 (ZONE 12)	UTM NAD 27 (ZONE 12)	UTM NAD 27 (ZONE 12)
N: 14398987.73 E: 2444312.65	N: 14399908.00 E: 2445764.57	N: 14399919.05 E: 2445641.79



UELS, LLC  
Corporate Office \* 85 South 200 East  
Vernal, UT 84078 \* (435) 789-1017

SURVEYED BY	DENNIS PETTY, B.H.	01-08-19	SCALE
DRAWN BY	T.S.	01-09-19	1" = 1000'

AS-DRILLED WELL LOCATION PLAT