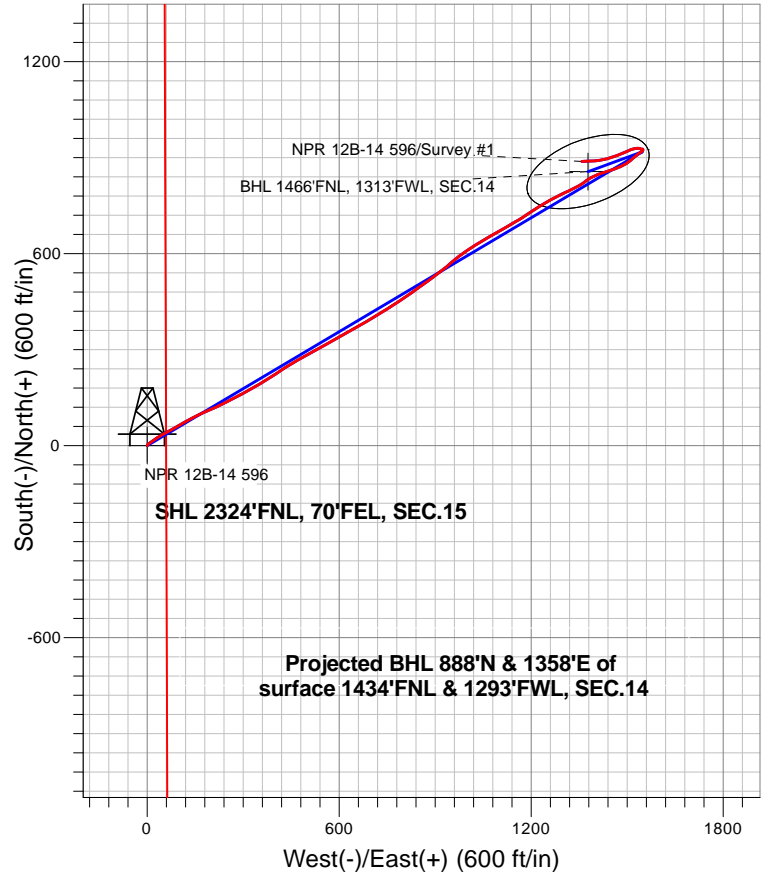


Caerus Oil and Gas LLC



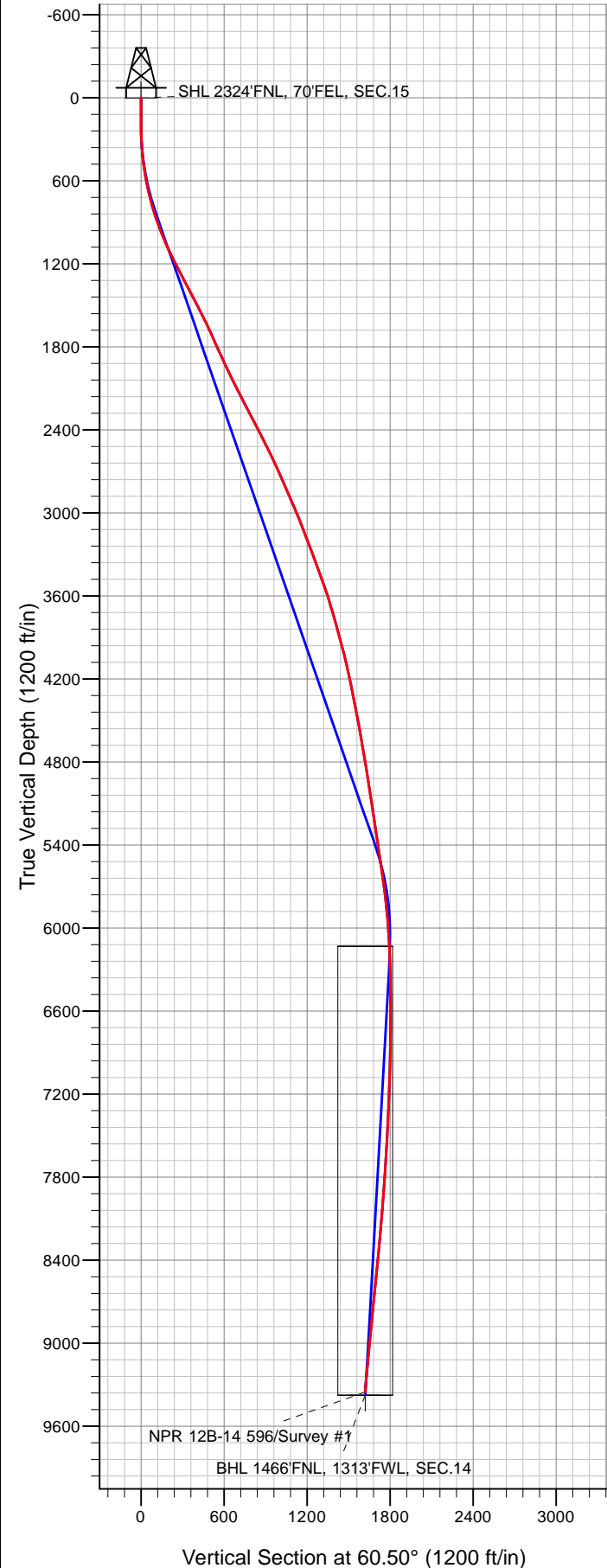
LEGEND

- △ NPR 12B-14 596, NPR 12B-14 596 Wellbore #1, Plan #1 (12-05-18) VO
- NPR 12B-14 596 Wellbore #1
- Survey #1

Final Survey Plot

Projected Final Survey -
9,690'MD & 9352' TVD @ 1358.37'VS
5.7 deg Inc 265.40 deg AZ

Project: SEC.15-T5S-R96W
Site: NPR H15 596 South Pad Sec.15-T5S-R96W
Well: NPR 12B-14 596
Plan: NPR 12B-14 596 Wellbore #1





Caerus Oil and Gas LLC

SEC.15-T5S-R96W

NPR H15 596 South Pad Sec.15-T5S-R96W

NPR 12B-14 596

NPR 12B-14 596 Wellbore #1

Survey: Survey #1

Standard Survey Report

12 December, 2018

Company:	Caerus Oil and Gas LLC	Local Co-ordinate Reference:	Well NPR 12B-14 596
Project:	SEC.15-T5S-R96W	TVD Reference:	WELL @ 6453.0ft (Original Well Elev)
Site:	NPR H15 596 South Pad Sec.15-T5S-R96W	MD Reference:	WELL @ 6453.0ft (Original Well Elev)
Well:	NPR 12B-14 596	North Reference:	True
Wellbore:	NPR 12B-14 596 Wellbore #1	Survey Calculation Method:	Minimum Curvature
Design:	NPR 12B-14 596 Wellbore #1	Database:	US_EDM

Project	SEC.15-T5S-R96W, Garfield County, CO		
Map System:	Universal Transverse Mercator (US Survey Feet)	System Datum:	Mean Sea Level
Geo Datum:	NAD 1927 - Western US		Using Well Reference Point
Map Zone:	Zone 12N (114 W to 108 W)		Using geodetic scale factor

Site		NPR H15 596 South Pad Sec.15-T5S-R96W			
Site Position:		Northing:	14,398,987.82 usft	Latitude:	39.615979
From:	Lat/Long	Easting:	2,444,312.67 usft	Longitude:	-108.145689
Position Uncertainty:	0.0 ft	Slot Radius:	13-3/16 "	Grid Convergence:	1.82 °

Well	NPR 12B-14 596					
Well Position	+N/-S	0.0 ft	Northing:	14,398,987.82 usft	Latitude:	39.615979
	+E/-W	0.0 ft	Easting:	2,444,312.67 usft	Longitude:	-108.145689
Position Uncertainty		0.0 ft	Wellhead Elevation:	0.0 ft	Ground Level:	6,429.0 ft

Wellbore	NPR 12B-14 596 Wellbore #1				
Magnetics	Model Name	Sample Date	Declination (°)	Dip Angle (°)	Field Strength (nT)
	HDGM	12/5/2018	9.53	65.80	51,411

Design	NPR 12B-14 596 Wellbore #1				
Audit Notes:					
Version:	1.0	Phase:	ACTUAL	Tie On Depth:	0.0
Vertical Section:	Depth From (TVD) (ft)	+N/-S (ft)	+E/-W (ft)	Direction (°)	
	0.0	0.0	0.0	60.50	

Survey Program	Date	12/12/2018			
From (ft)	To (ft)	Survey (Wellbore)	Tool Name	Description	
120.0	9,690.0	Survey #1 (NPR 12B-14 596 Wellbore #1)	MWD	MWD - Standard	

Survey										
Measured Depth (ft)	Inclination (°)	Azimuth (°)	Vertical Depth (ft)	+N/-S (ft)	+E/-W (ft)	Vertical Section (ft)	Dogleg Rate (°/100usft)	Build Rate (°/100usft)	Turn Rate (°/100usft)	
0.0	0.00	0.00	0.0	0.0	0.0	0.0	0.00	0.00	0.00	
1.0	0.00	0.00	1.0	0.0	0.0	0.0	0.00	0.00	0.00	
SHL 2324'FNL, 70'FEL, SEC.15										
120.0	0.00	0.00	120.0	0.0	0.0	0.0	0.00	0.00	0.00	
208.0	1.30	26.20	208.0	0.9	0.4	0.8	1.48	1.48	0.00	
300.0	1.90	36.40	300.0	3.1	1.8	3.1	0.72	0.65	11.09	
392.0	5.10	52.30	391.8	6.8	5.9	8.5	3.60	3.48	17.28	
484.0	7.60	56.70	483.2	12.6	14.3	18.6	2.77	2.72	4.78	
576.0	10.70	54.60	574.0	20.9	26.3	33.2	3.39	3.37	-2.28	
668.0	12.20	58.20	664.2	31.0	41.5	51.4	1.81	1.63	3.91	
763.0	15.00	63.30	756.5	41.8	61.1	73.7	3.20	2.95	5.37	

Company:	Caerus Oil and Gas LLC	Local Co-ordinate Reference:	Well NPR 12B-14 596
Project:	SEC.15-T5S-R96W	TVD Reference:	WELL @ 6453.0ft (Original Well Elev)
Site:	NPR H15 596 South Pad Sec.15-T5S-R96W	MD Reference:	WELL @ 6453.0ft (Original Well Elev)
Well:	NPR 12B-14 596	North Reference:	True
Wellbore:	NPR 12B-14 596 Wellbore #1	Survey Calculation Method:	Minimum Curvature
Design:	NPR 12B-14 596 Wellbore #1	Database:	US_EDM

Survey									
Measured Depth (ft)	Inclination (°)	Azimuth (°)	Vertical Depth (ft)	+N/-S (ft)	+E/-W (ft)	Vertical Section (ft)	Dogleg Rate (°/100usft)	Build Rate (°/100usft)	Turn Rate (°/100usft)
858.0	18.40	60.40	847.5	54.7	85.1	101.0	3.68	3.58	-3.05
952.0	20.20	59.70	936.2	70.3	112.0	132.1	1.93	1.91	-0.74
1,047.0	23.10	62.50	1,024.5	87.1	142.7	167.1	3.24	3.05	2.95
1,141.0	25.50	66.00	1,110.2	103.9	177.6	205.7	2.98	2.55	3.72
1,235.0	27.10	65.50	1,194.4	121.0	215.5	247.2	1.72	1.70	-0.53
1,330.0	27.90	63.10	1,278.7	140.0	255.0	290.9	1.44	0.84	-2.53
1,424.0	28.10	62.10	1,361.7	160.3	294.2	335.0	0.54	0.21	-1.06
1,519.0	26.90	60.80	1,446.0	181.3	332.7	378.9	1.41	-1.26	-1.37
1,614.0	27.40	57.60	1,530.5	203.5	370.0	422.2	1.62	0.53	-3.37
1,708.0	26.10	56.00	1,614.5	226.6	405.4	464.4	1.58	-1.38	-1.70
1,802.0	24.50	59.10	1,699.4	248.2	439.2	504.5	2.21	-1.70	3.30
1,897.0	24.00	59.90	1,786.1	268.0	472.9	543.5	0.63	-0.53	0.84
1,991.0	24.80	61.10	1,871.7	287.1	506.7	582.4	1.00	0.85	1.28
2,086.0	25.60	61.00	1,957.6	306.7	542.1	622.8	0.84	0.84	-0.11
2,180.0	25.40	61.10	2,042.5	326.3	577.5	663.3	0.22	-0.21	0.11
2,275.0	27.00	60.90	2,127.7	346.6	614.1	705.2	1.69	1.68	-0.21
2,323.0	27.80	60.20	2,170.3	357.5	633.4	727.3	1.80	1.67	-1.46
2,400.0	28.20	59.10	2,238.3	375.8	664.6	763.5	0.85	0.52	-1.43
2,495.0	27.70	59.80	2,322.2	398.4	702.9	808.0	0.63	-0.53	0.74
2,589.0	27.10	58.60	2,405.7	420.6	740.1	851.2	0.87	-0.64	-1.28
2,684.0	26.20	56.80	2,490.6	443.3	776.1	893.8	1.27	-0.95	-1.89
2,779.0	26.00	55.10	2,575.9	466.7	810.7	935.4	0.81	-0.21	-1.79
2,873.0	24.90	54.10	2,660.8	490.1	843.6	975.6	1.26	-1.17	-1.06
2,968.0	24.60	54.10	2,747.0	513.4	875.9	1,015.1	0.32	-0.32	0.00
3,062.0	23.60	52.70	2,832.8	536.3	906.7	1,053.2	1.23	-1.06	-1.49
3,157.0	23.30	51.20	2,920.0	559.6	936.5	1,090.6	0.70	-0.32	-1.58
3,251.0	23.10	50.30	3,006.4	583.0	965.1	1,127.1	0.43	-0.21	-0.96
3,346.0	21.50	53.00	3,094.3	605.4	993.4	1,162.7	2.00	-1.68	2.84
3,441.0	20.80	60.20	3,182.9	624.3	1,021.9	1,196.8	2.83	-0.74	7.58
3,535.0	20.70	59.50	3,270.8	641.0	1,050.7	1,230.1	0.28	-0.11	-0.74
3,724.0	19.90	59.60	3,448.1	674.2	1,107.2	1,295.7	0.42	-0.42	0.05
3,819.0	19.30	60.30	3,537.6	690.2	1,134.8	1,327.6	0.68	-0.63	0.74
3,914.0	17.30	58.90	3,627.8	705.3	1,160.6	1,357.4	2.16	-2.11	-1.47
4,008.0	16.20	57.70	3,717.8	719.5	1,183.6	1,384.5	1.23	-1.17	-1.28
4,103.0	15.80	56.70	3,809.1	733.7	1,205.6	1,410.6	0.51	-0.42	-1.05
4,198.0	15.40	55.10	3,900.6	748.0	1,226.8	1,436.1	0.62	-0.42	-1.68
4,292.0	14.50	60.30	3,991.4	761.0	1,247.2	1,460.3	1.72	-0.96	5.53
4,387.0	12.60	64.30	4,083.8	771.3	1,266.9	1,482.5	2.23	-2.00	4.21
4,482.0	12.20	63.60	4,176.6	780.3	1,285.2	1,502.9	0.45	-0.42	-0.74
4,576.0	11.60	64.30	4,268.5	788.8	1,302.6	1,522.2	0.66	-0.64	0.74
4,671.0	11.40	64.70	4,361.6	797.0	1,319.7	1,541.1	0.23	-0.21	0.42
4,766.0	11.10	63.00	4,454.8	805.1	1,336.4	1,559.6	0.47	-0.32	-1.79
4,860.0	10.30	59.30	4,547.2	813.5	1,351.7	1,577.0	1.12	-0.85	-3.94

Company:	Caerus Oil and Gas LLC	Local Co-ordinate Reference:	Well NPR 12B-14 596
Project:	SEC.15-T5S-R96W	TVD Reference:	WELL @ 6453.0ft (Original Well Elev)
Site:	NPR H15 596 South Pad Sec.15-T5S-R96W	MD Reference:	WELL @ 6453.0ft (Original Well Elev)
Well:	NPR 12B-14 596	North Reference:	True
Wellbore:	NPR 12B-14 596 Wellbore #1	Survey Calculation Method:	Minimum Curvature
Design:	NPR 12B-14 596 Wellbore #1	Database:	US_EDM

Survey									
Measured Depth (ft)	Inclination (°)	Azimuth (°)	Vertical Depth (ft)	+N/-S (ft)	+E/-W (ft)	Vertical Section (ft)	Dogleg Rate (°/100usft)	Build Rate (°/100usft)	Turn Rate (°/100usft)
4,954.0	10.00	54.60	4,639.7	822.6	1,365.5	1,593.6	0.94	-0.32	-5.00
5,049.0	9.40	53.20	4,733.3	832.0	1,378.5	1,609.5	0.68	-0.63	-1.47
5,143.0	9.40	63.00	4,826.1	840.1	1,391.5	1,624.7	1.70	0.00	10.43
5,238.0	9.10	71.80	4,919.8	845.9	1,405.5	1,639.9	1.52	-0.32	9.26
5,332.0	8.80	70.80	5,012.7	850.6	1,419.4	1,654.2	0.36	-0.32	-1.06
5,427.0	8.70	70.70	5,106.6	855.4	1,433.0	1,668.4	0.11	-0.11	-0.11
5,521.0	8.70	71.60	5,199.5	860.0	1,446.5	1,682.4	0.14	0.00	0.96
5,615.0	8.80	70.30	5,292.4	864.6	1,460.0	1,696.5	0.24	0.11	-1.38
5,710.0	8.70	68.20	5,386.3	869.8	1,473.5	1,710.8	0.35	-0.11	-2.21
5,805.0	8.50	63.40	5,480.3	875.6	1,486.4	1,724.9	0.78	-0.21	-5.05
5,899.0	8.20	58.10	5,573.3	882.2	1,498.3	1,738.5	0.88	-0.32	-5.64
5,994.0	7.80	52.80	5,667.3	889.7	1,509.2	1,751.7	0.88	-0.42	-5.58
6,088.0	7.30	44.20	5,760.5	897.8	1,518.5	1,763.7	1.31	-0.53	-9.15
6,183.0	6.20	48.70	5,854.9	905.6	1,526.5	1,774.6	1.28	-1.16	4.74
6,277.0	5.10	56.90	5,948.4	911.2	1,533.9	1,783.7	1.45	-1.17	8.72
6,372.0	3.10	63.10	6,043.2	914.7	1,539.7	1,790.5	2.15	-2.11	6.53
6,466.0	2.30	55.50	6,137.1	916.9	1,543.5	1,794.9	0.93	-0.85	-8.09
6,561.0	2.00	49.20	6,232.0	919.0	1,546.3	1,798.4	0.40	-0.32	-6.63
6,655.0	1.50	34.00	6,325.9	921.1	1,548.3	1,801.1	0.72	-0.53	-16.17
6,750.0	1.10	11.50	6,420.9	923.1	1,549.1	1,802.8	0.67	-0.42	-23.68
6,844.0	0.90	2.80	6,514.9	924.7	1,549.4	1,803.8	0.27	-0.21	-9.26
6,938.0	0.60	327.30	6,608.9	925.8	1,549.1	1,804.2	0.57	-0.32	-37.77
7,033.0	0.90	279.50	6,703.9	926.4	1,548.1	1,803.6	0.70	0.32	-50.32
7,127.0	1.40	276.00	6,797.9	926.6	1,546.3	1,802.1	0.54	0.53	-3.72
7,222.0	1.50	286.90	6,892.8	927.1	1,543.9	1,800.3	0.31	0.11	11.47
7,317.0	1.40	283.00	6,987.8	927.7	1,541.6	1,798.6	0.15	-0.11	-4.11
7,411.0	1.80	281.50	7,081.8	928.3	1,539.0	1,796.6	0.43	0.43	-1.60
7,506.0	2.10	276.50	7,176.7	928.8	1,535.8	1,794.1	0.36	0.32	-5.26
7,600.0	2.30	275.50	7,270.6	929.1	1,532.2	1,791.1	0.22	0.21	-1.06
7,694.0	2.90	266.90	7,364.5	929.2	1,528.0	1,787.5	0.76	0.64	-9.15
7,777.0	3.60	247.50	7,647.1	925.4	1,512.6	1,772.2	0.46	0.25	-6.86
8,261.0	4.80	243.10	7,930.3	916.6	1,493.8	1,751.5	0.44	0.42	-1.55
8,544.0	5.20	252.20	8,212.3	907.3	1,471.0	1,727.1	0.31	0.14	3.22
8,827.0	5.30	252.30	8,494.1	899.4	1,446.4	1,701.8	0.04	0.04	0.04
9,016.0	6.20	255.20	8,682.1	894.2	1,428.2	1,683.3	0.50	0.48	1.53
9,110.0	6.20	260.70	8,775.6	892.1	1,418.3	1,673.7	0.63	0.00	5.85
9,391.0	6.00	269.70	9,055.0	889.5	1,388.6	1,646.6	0.35	-0.07	3.20
9,620.0	5.70	265.40	9,282.8	888.6	1,365.3	1,625.8	0.23	-0.13	-1.88
9,690.0	5.70	265.40	9,352.4	888.0	1,358.4	1,619.5	0.00	0.00	0.00
BHL 1466°FNL, 1313°FWL, SEC.14									

Company:	Caerus Oil and Gas LLC	Local Co-ordinate Reference:	Well NPR 12B-14 596
Project:	SEC.15-T5S-R96W	TVD Reference:	WELL @ 6453.0ft (Original Well Elev)
Site:	NPR H15 596 South Pad Sec.15-T5S-R96W	MD Reference:	WELL @ 6453.0ft (Original Well Elev)
Well:	NPR 12B-14 596	North Reference:	True
Wellbore:	NPR 12B-14 596 Wellbore #1	Survey Calculation Method:	Minimum Curvature
Design:	NPR 12B-14 596 Wellbore #1	Database:	US_EDM

Checked By: _____	Approved By: _____	Date: _____
-------------------	--------------------	-------------