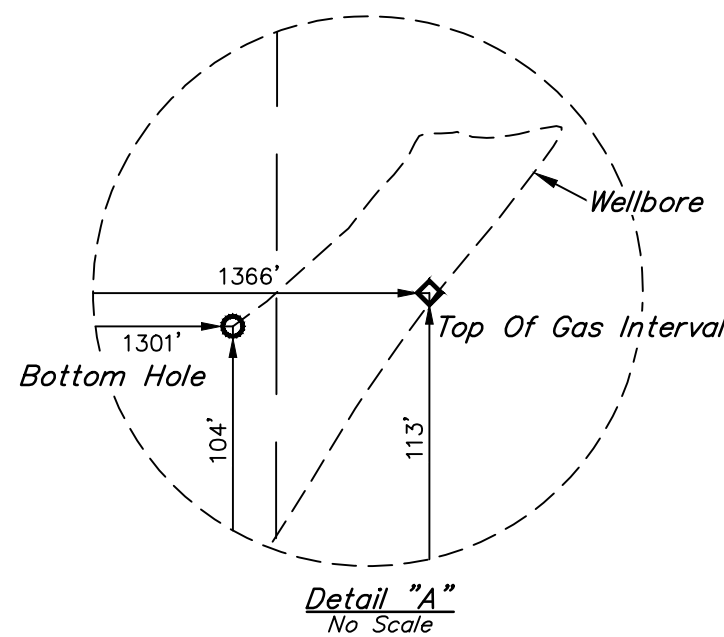
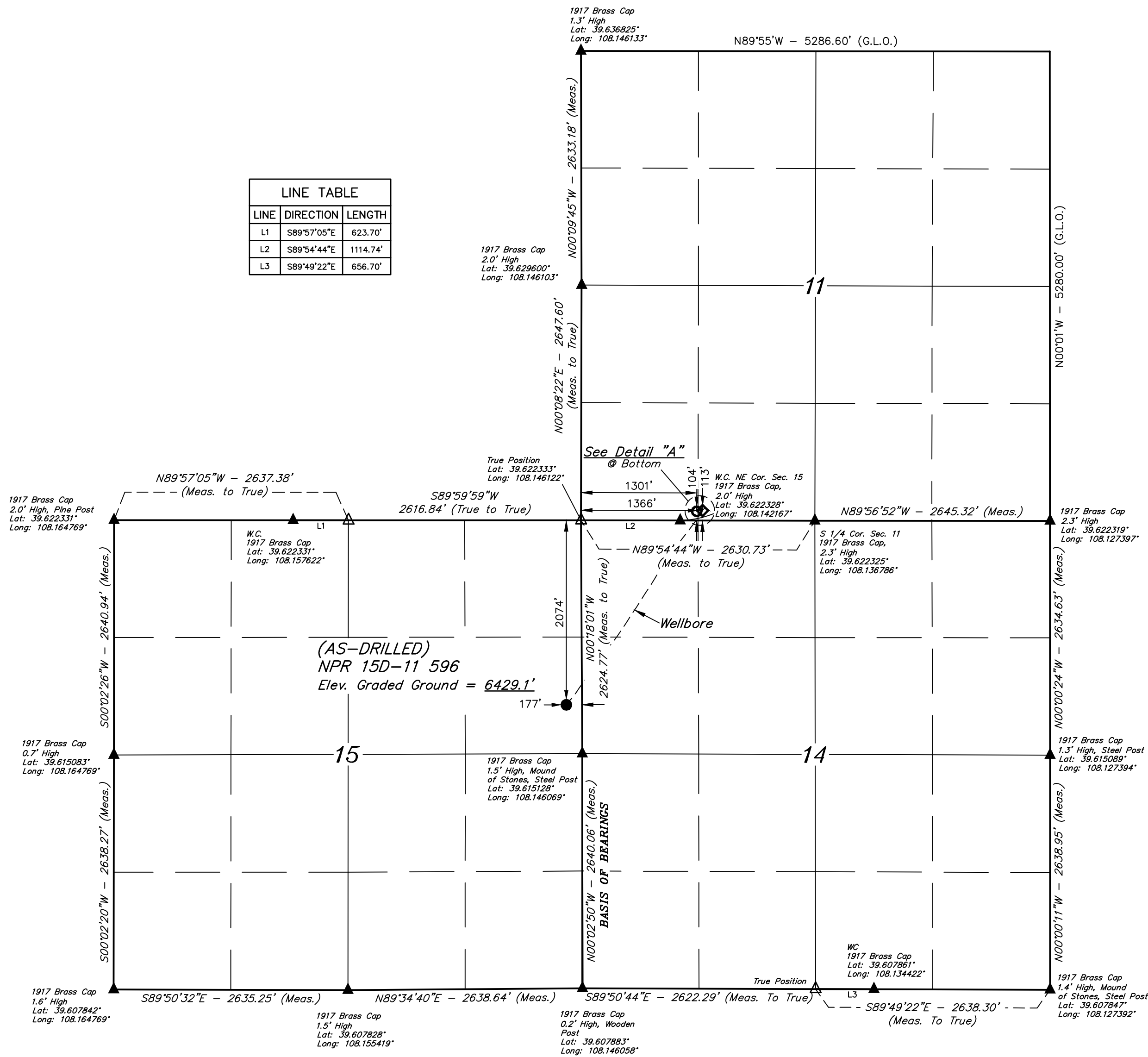



● = AS-DRILLED WELLHEAD
 ◆ = TOP OF GAS INTERVAL.
 ○ = BOTTOM HOLE.
 ▲ = SECTION CORNERS
 LOCATED. (NAD 83)
 △ = SECTION CORNERS
 RE-ESTABLISHED.
 (Not Set on Ground.)
 (NAD 83)

NOTE:
WELLBORE DATA PROVIDED
BY Caerus Oil & Gas LLC.

T5S, R96W, 6th P.M.

| LINE TABLE | | |
|------------|-------------|----------|
| LINE | DIRECTION | LENGTH |
| L1 | S89°57'05"E | 623.70' |
| L2 | S89°54'44"E | 1114.74' |
| L3 | S89°49'22"E | 656.70' |



| | | | | | |
|---|--|--|---|--|--|
| PDOP = 3.4 | | |  | | |
| NAD 83 (SURFACE LOCATION) LATITUDE = 39°36'59.90" (39.616639) LONGITUDE = 108°08'48.15" (108.146707) | | NAD 83 (TOP OF GAS INTERVAL) LATITUDE = 39°37'21.50" (39.622639) LONGITUDE = 108°08'28.58" (108.141272) | | NAD 83 (BOTTOM HOLE) LATITUDE = 39°37'21.41" (39.622614) LONGITUDE = 108°08'29.41" (108.141504) | |
| NAD 27 (SURFACE LOCATION) LATITUDE = 39°36'59.99" (39.616663) LONGITUDE = 108°08'45.86" (108.140672) | | NAD 27 (TOP OF GAS INTERVAL) LATITUDE = 39°37'21.58" (39.622662) LONGITUDE = 108°08'26.29" (108.140637) | | NAD 27 (BOTTOM HOLE) LATITUDE = 39°37'21.50" (39.622638) LONGITUDE = 108°08'27.13" (108.140868) | |
| UTM NAD 27 (ZONE 12) N: 14399233.39 E: 2444196.97 | | UTM NAD 27 (ZONE 12) N: 14401467.14 E: 2445658.34 | | UTM NAD 27 (ZONE 12) N: 14401456.11 E: 2445593.34 | |

NOTE:

- Distances referenced on plat to section lines are perpendicular.

THIS IS TO CERTIFY THAT THE ABOVE PLAT WAS PREPARED BY THE PERSON WHOSE NAME IS HEREIN SET FORTH AND THAT THE LOCATION AS SHOWN WAS STAKED ON THE GROUND AND FROM FIELD NOTES OF ACTUAL SURVEYS MADE BY ME OR UNDER MY SUPERVISION AND THAT THE SAME ARE TRUE AND CORRECT TO THE BEST OF MY KNOWLEDGE AND BELIEF.

Handwritten Signature: Harold M. Mandel

REGISTERED LAND SURVEYOR
REGISTRATION NO. 17910
STATE OF COLORADO

NOV 19 1990

BASIS OF BEARINGS
BEARINGS ARE A BASED ASSUMPTION THAT THE EAST LINE OF THE SOUTHWEST
1/4 OF SECTION 15 BEARS N00°02'50"W. MONUMENTS DESCRIBED HEREON.

BASIS OF ELEVATION
SPOT ELEVATION AT THE NORTHWEST CORNER OF SECTION 30, T5S, R95W, 6th P.M., TAKEN FROM THE FORKED GULCH
SQUAD RANGLE, GARFIELD COUNTY, COLORADO TOPOGRAPHIC MAP PUBLISHED BY THE UNITED
STATES DEPARTMENT OF THE INTERIOR, GEOLOGICAL SURVEY, SAID ELEVATION WAS MARKED AS BEING 5966 FEET.

 **UINTEAH**

Caerus Oil & Gas LLC
(AS-DRILLED) NPR 15D-11 596
SE 1/4 NE 1/4, SECTION 15, T5S, R96W, 6th P.M.
GARFIELD COUNTY, COLORADO

| | | | |
|--------------------|---------------------------|-----------------|------------------|
| SURVEYED BY | DENNIS PETTY, B.H. | 01-08-19 | SCALE |
| DRAWN BY | T.S. | 01-09-19 | 1" = 100' |

AS-DRILED WELL LOCATION PLAT