

Inspection Photos

1/22/2019

Operator: D90 ENERGY LLC - 10706

Location ID: 450629

Inspection Doc. Number: 682504407

Lincoln County, CO

Aaron Trujillo
NE Reclamation Specialist
COGCC

Inspection Photos
Operator: D90 ENERGY LLC - 10706
Location ID: 450629

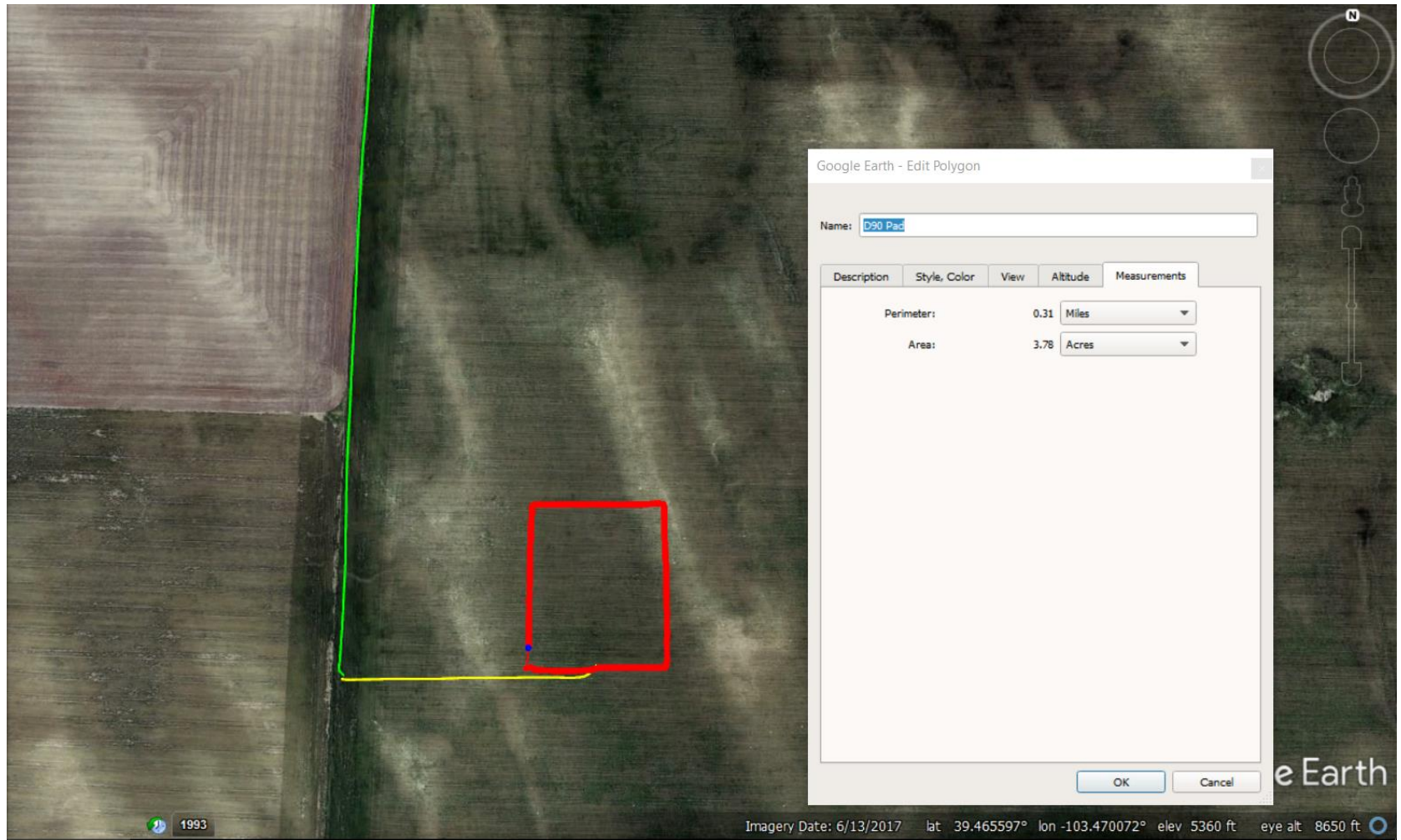


Photo 1: 2017 Google Earth aerial image. A disturbance area of 3.78 acres (red polygon) was mapped using a Trimble Juno 3B handheld device. This disturbance area exceeds the permitted disturbance of 3 acres per 2A doc. ##401846352. Photo also shows operator has utilized ~0.88 miles of pre-existing farm road (green line), and constructed a 700 foot road to the pad (yellow).



Photo 2: Photo taken from the southwest corner of the disturbance area, facing north. Photo shows operator has installed surface roughening (ripping) as a stormwater control BMP along the perimeter of the pad. BMP appears to have been installed in accordance with good engineering practices prior to and/or during construction activities, and in proper functioning condition.



Photo 3: Photo taken from the southwest corner of the disturbance area, facing east.
See comments under photo 2.



Photo 4: Photo taken from the southeast corner of the disturbance area, facing west.
See comments under photo 2.



Photo 5: Photo taken from the southeast corner of the disturbance area, facing north. See comments under photo 2.



Photo 6: Photo taken from the east end of the disturbance area. Photo shows area where topsoil has been pushed onto the perimeter stormwater BMP. Advise maintenance to ensure BMP remains in proper functioning condition.



Photo 7: Photo taken from the northeast corner of the disturbance area, facing south.
See comments under photo 2.



Photo 8: Photo taken from the northeast corner of the disturbance area, facing west.
See comments under photo 2.



Photo 9: Photo taken from the northeast corner of the current pad, facing south. Photo shows sufficient soil salvage and segregation appears to be being conducted.



Photo 10: Photo taken from the northeast corner of the current pad, facing west. Photo shows sufficient soil salvage and segregation appears to be being conducted.



Photo 11: Photo taken from the northwest corner of the disturbance area, facing east.
See comments under photo 2.



Photo 12: Photo taken from the northwest corner of the disturbance area, facing south. See comments under photo 2.



Photo 13: Photo taken from the south end of the location, facing west. Photo shows the east/west access road.



Photo 14: Photo taken from the west of the location. Photo shows the pre-existing farm road. Operator has placed road base on access road for stabilization.