

Inspection Photos

API#045-06310

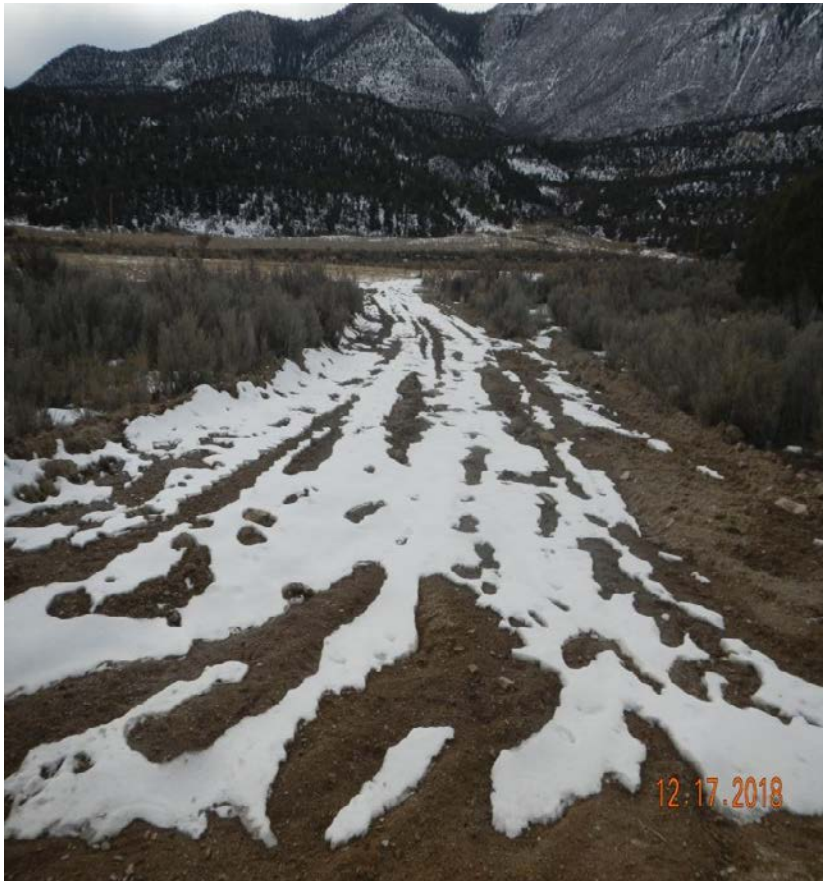
Operator: Maralex

Inspection Number: 692400456

Inspection Date: 12/17/2018

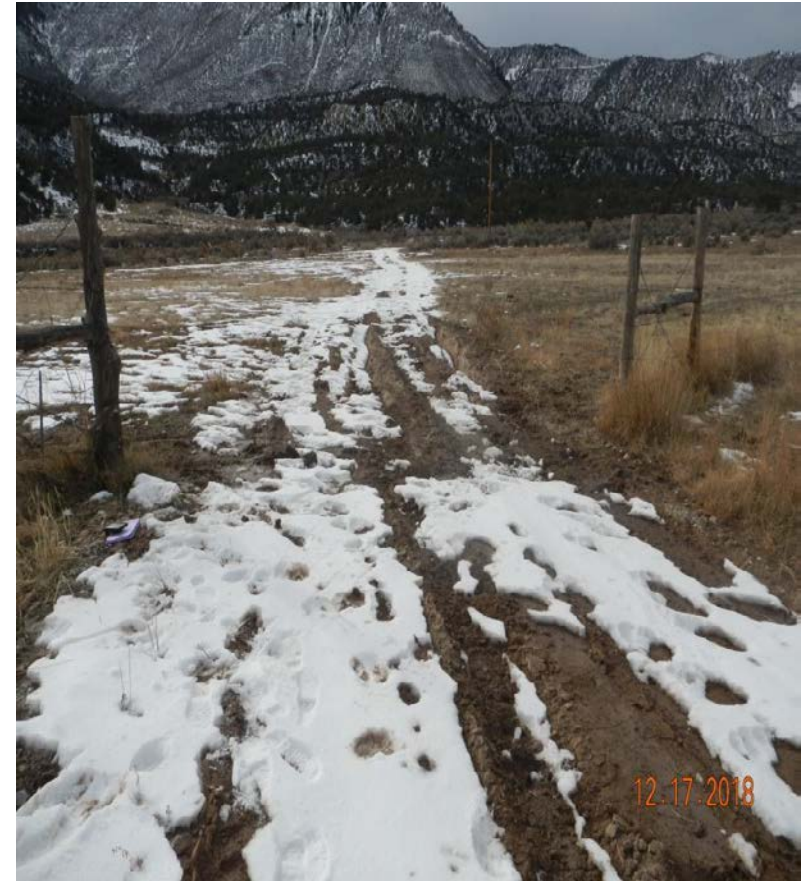


COLORADO
Oil & Gas Conservation
Commission
Department of Natural Resources



Photo#1:
Looking South at point where access road diverts
from County Rd.

December 17, 2018



Photo#3:
Point at where access road enters Location



Photo#3:

Looking from midpoint of access road in Location back to Northeast. Jeep (red arrow) is parked at point of diversion from County Road.

December 17, 2018



COLORADO
Oil & Gas Conservation
Commission
Department of Natural Resources

Inspection Photos: Maralex PA Spears API#045-06310



Photo#4:
Overview of Location from center to North.

December 17, 2018



COLORADO
Oil & Gas Conservation
Commission
Department of Natural Resources

Inspection Photos: Maralex PA Spears API#045-06310



Photo#5:
Ground level view of vegetated area.



Photo#6:
Overview of vegetated area.

December 17, 2018



Photo#7:

Aerial view of Location area: subject Well is marked with yellow pin.

December 17, 2018



COLORADO
Oil & Gas Conservation
Commission
Department of Natural Resources

Inspection Photos: Maralex PA Spears API#045-06310