

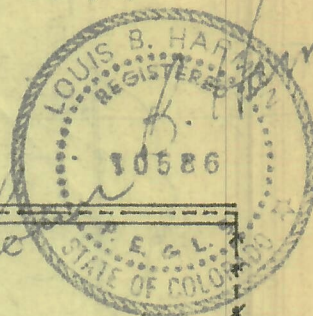
RECEIVED

The accompanying plat is an accurate representation showing the location of a proposed well. This location may be described as a point 1980 feet north of the south line, and 660 feet west of the east line of Section 26, Township 15 S Range 46 W of the 6th P.M., CHEYENNE County, COLORADO. The surface elevation at this point is 4442 feet m.s.l.

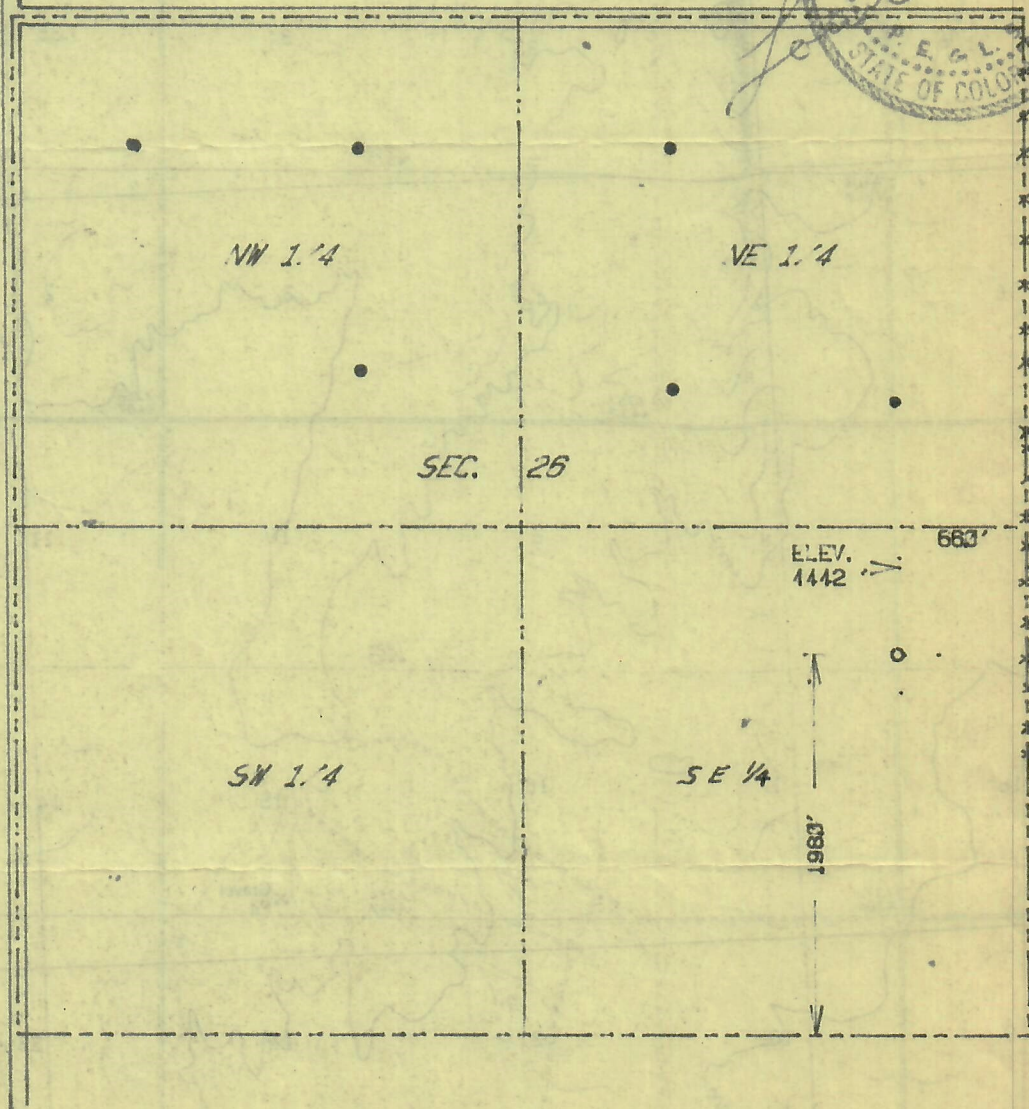
COLO. OIL & GAS CONS. COMM.



02528912



First view
6 1/2 mi
North



SCALE - 1"=1000'

- SURVEYED POINT
 - REFERENCE STAKE (200' S, 200' E)
- SE 1/4 SEC. 26, T 15 S, R 46 W

BEST COPY AVAILABLE

HARMON
ENGINEERING
SERVICES

LOWE-GILLETE #2

TXO PRODUCTION CORP

CHEYENNE CO., COLORADO

28 JULY 1983

