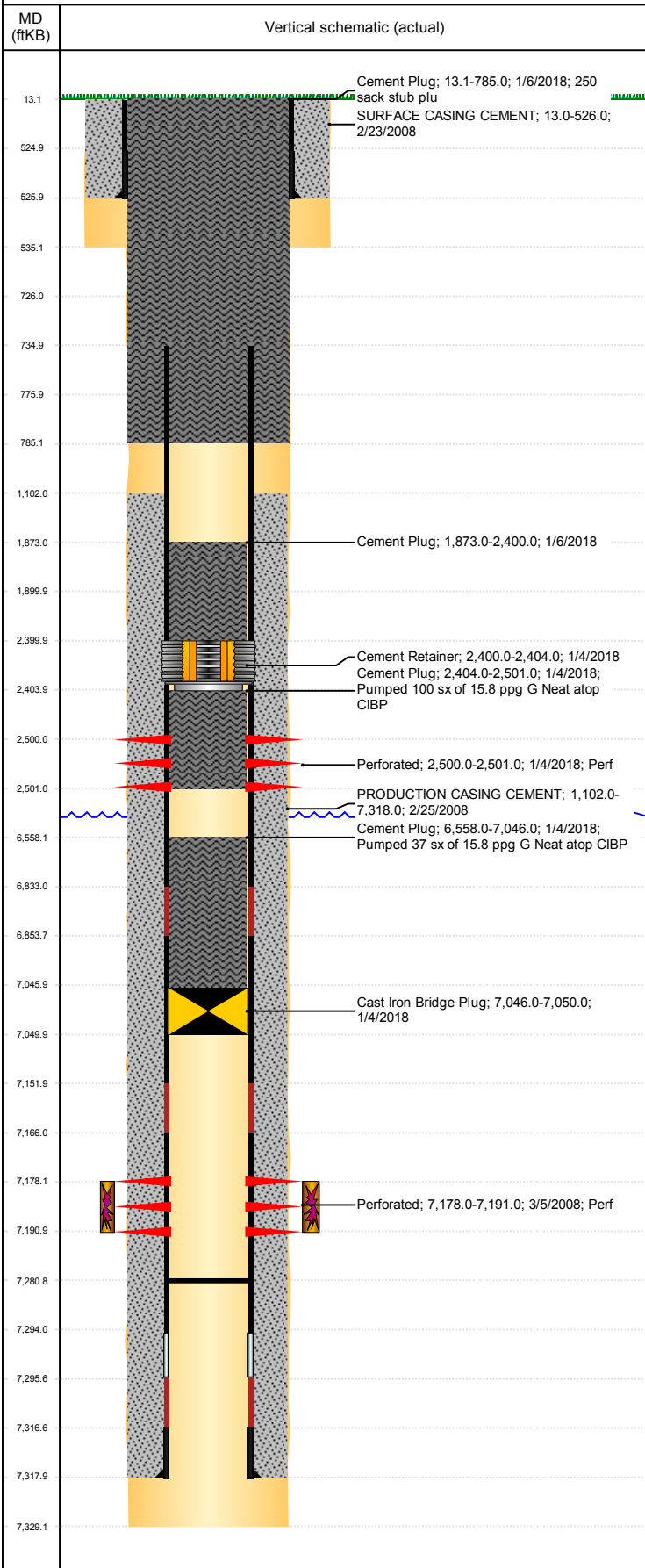


Well Name: HERTZKE N01-12

VERTICAL, ORIGINAL HOLE, 1/16/2019 8:25:29 AM



Well Header									
API 05-123-26555		Business Unit DJ BASIN			District 15		Well Config VERTICAL		
KB - GL / MSL (ft... 13.00		Spud Date 2/22/2008		P & A Date 1/6/2018		Well Production Status PA			SoRT Yes
Comment									
Surface Location (Congressional)									
Qtr 3 NW	Qtr 4 SW	Section 1	Twtnshp 5	Twtnsh... N	Range 67	Rng E/... W	Actual Latitude (°) 40.42696349	Actual Longitude (°) -104.84811466	
Wellbore Sections									
Section Des			Size (in)			Act Top, MD (ftKB)		Act Btm, MD (ftKB)	
SURFACE			12 1/4			13		535	
PRODUCTION			7 7/8			535		7,329	
Casing Strings									
Csg Des			Run Date		OD (in)	Wt/Len (lb/ft)	Grade	Top, MD (ftKB)	MD (ftKB)
Surface			2/23/2008		8 5/8	24.00	J-55	13.0	526.0
PRODUCTION			2/25/2008		4 1/2	11.60	M-80	13.0	7,318.0
Cement									
Des					Start Date		Top (ftKB)		Btm (ftKB)
SURFACE CASING CEMENT					2/23/2008		13.0		526.0
PRODUCTION CASING CEMENT					2/25/2008		1,102.0		7,318.0
Cement Plug					1/4/2018		6,558.0		7,046.0
Cement Plug					1/4/2018		2,404.0		2,501.0
Cement Plug					1/6/2018		13.1		785.0
Cement Plug					1/6/2018		1,873.0		2,400.0
Zone Statuses									
Zone Name		Status Date	Status	Fluid Type	Job			Prod Method	
CODELL		4/28/2008	PR		DRILLING/COMPLETION - ORIGINAL, 2/22/2008...				
CODELL		1/3/2018	P&A		ABANDON WELL, 1/3/2018 06:00				
Perforation Data									
Linked Zone			Bnch/Stg	Entered Shot Total	Top (ftKB)		Btm (ftKB)		Date
CODELL, ORIGINAL HOLE				4	2,500.00		2,501.00		1/4/2018
				52	7,178.00		7,191.00		3/5/2008
Stimulation Intervals									
Zone				Start Date		Top (ftKB)		Btm (ftKB)	
CODELL, ORIGINAL HOLE				3/13/2008		7,178.0		7,191.0	
Other In Hole									
Run Date		Des				OD (in)	Top (ftKB)		Btm (ftKB)
1/4/2018		Cement Retainer				4	2,400.0		2,404.0
1/4/2018		Cast Iron Bridge Plug				4	7,046.0		7,050.0
Logs									
Date		Type				Top, MD (ftKB)		Btm, MD (ftKB)	
2/25/2008		Caliper/Comp.Density/Neutron/GR/SP/ML				2,450.0		7,307.0	
2/25/2008		DIL/GR/SP/Caliper				517.0		7,327.0	
3/4/2008		CBL/CCL/GR				990.0		7,281.0	
Plug Back Total Depths									
Date		Type		Com				Depth (ftKB)	
2/25/2008		LATCH DOWN COLLAR						7,294.0	
3/4/2008		FILL						7,281.0	