



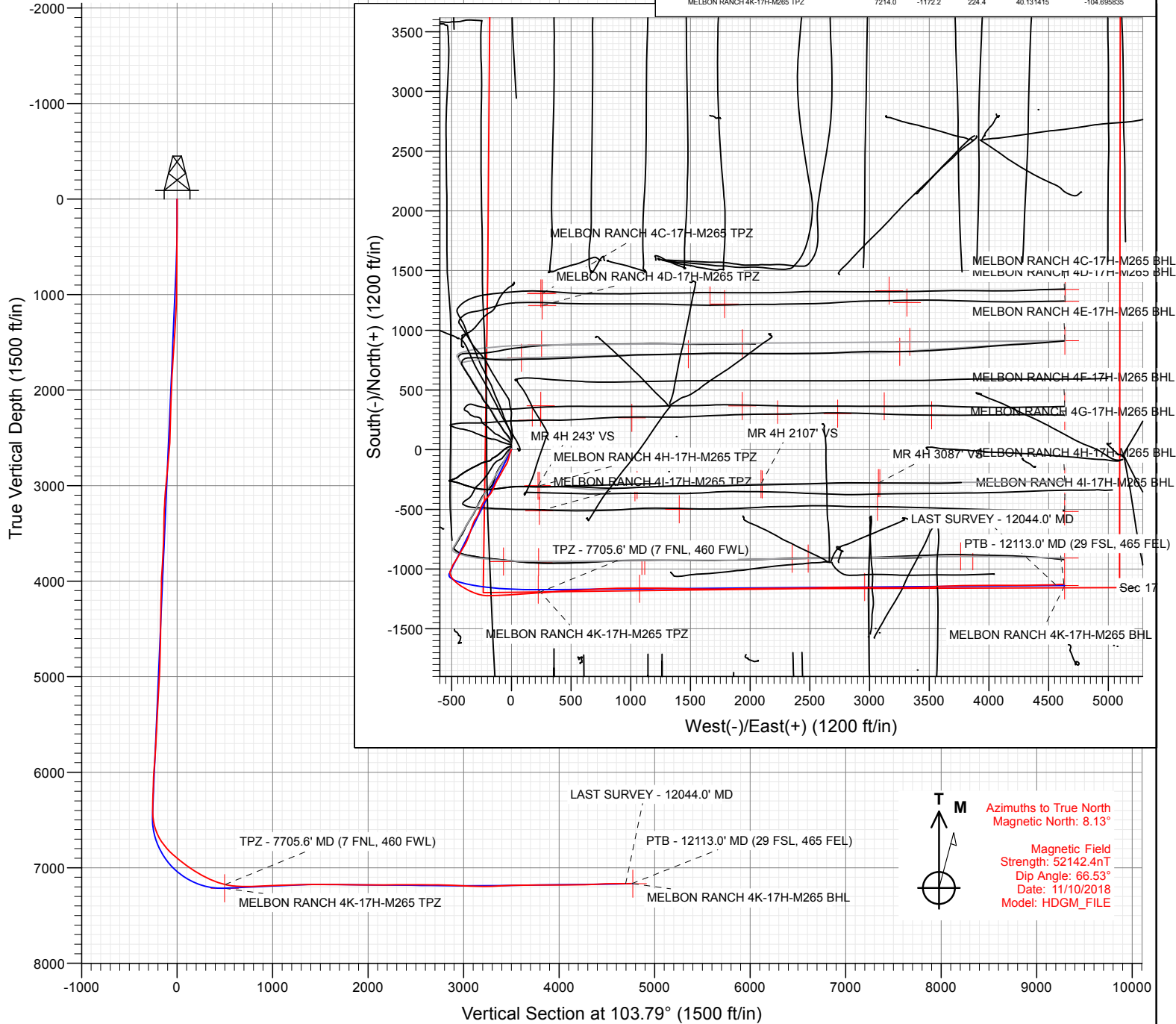
Project: Sec 17 T2N-R65W
Site: Melbon Ranch Pad
Well: MELBON RANCH 4K-17H-M265
Wellbore: OH
Design: FINAL

SECTION DETAILS

Sec	MD	Inc	Azi	TVD	+N/-S	+E/-W	Dleg	TFace	VFace	Target
1	0.0	0.00	0.00	0.0	0.0	0.0	0.00	0.00	0.0	
2	200.0	0.00	0.00	200.0	0.0	0.0	0.00	0.00	0.0	
3	750.8	11.02	206.62	747.4	-47.2	-23.6	2.00	206.62	-11.7	
4	6559.0	11.02	206.62	6448.6	-1039.3	-520.8	0.00	0.00	-258.2	
5	7777.1	92.49	89.54	7214.0	-1172.2	224.4	8.00	-116.21	497.3	MELBON RANCH 4K-17H-M265 TPZ
6	8627.5	92.49	89.54	7177.0	-1165.4	1074.0	0.00	0.00	1320.8	MELBON RANCH 4K 1074 TGT
7	8777.4	89.50	89.54	7174.4	-1164.2	1223.9	2.00	-180.00	1466.0	
8	10449.8	89.50	89.54	7189.1	-1150.9	2896.1	0.00	0.00	3086.9	
9	10512.7	90.75	89.54	7189.0	-1150.4	2959.0	2.00	0.00	3147.9	MELBON RANCH 4K 2959 TGT
10	12187.2	90.75	89.54	7167.0	-1137.0	4633.3	0.00	0.00	4770.7	MELBON RANCH 4K-17H-M265 BHL

FINAL
MELBON RANCH 4K-17H-M265
441537 156319
WELL @ 4979.0ft (Original Well Elev)
Ground Level @ 4956.0
North American Datum 1983
Well MELBON RANCH 4K-17H-M265, True North

Type User	Target	No Target (Freehand)	Azimuth	Origin	Type	N/S	E/W	From	TVD
			103.79		Slot	0.0			
Name			TVD	+N/-S	+E/-W			Latitude	Longitude
MELBON RANCH 4K-17H-M265 BHL			7167.0	-1174.0	4073.3			40.131510	-104.680098
MELBON RANCH 4K 1074 TGT			7177.0	-1165.4	1074.0			40.131433	-104.682797
MELBON RANCH 4K 2959 TGT			7189.0	-1150.4	2959.0			40.131474	-104.686055
MELBON RANCH 4K-17H-M265 TPZ			7214.0	-1172.2	224.4			40.131415	-104.695535



WELL DETAILS: MELBON RANCH 4K-17H-M265

+N/-S	+E/-W	Northing	Easting	Latitude	Longitude
0.0	0.0	1292910.35	3224623.87	40.134632	-104.696638





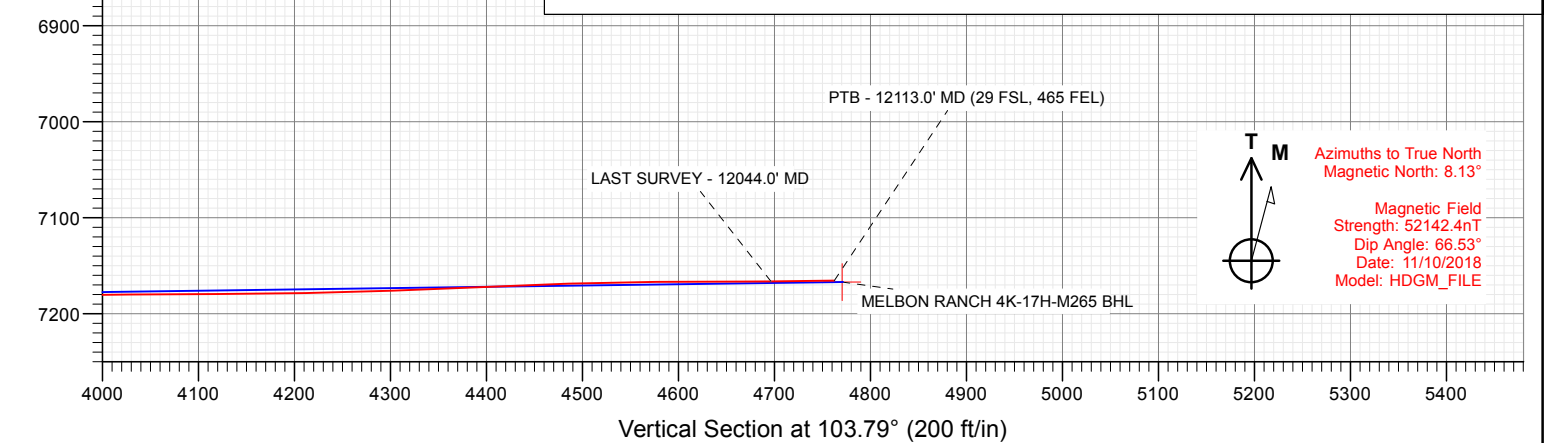
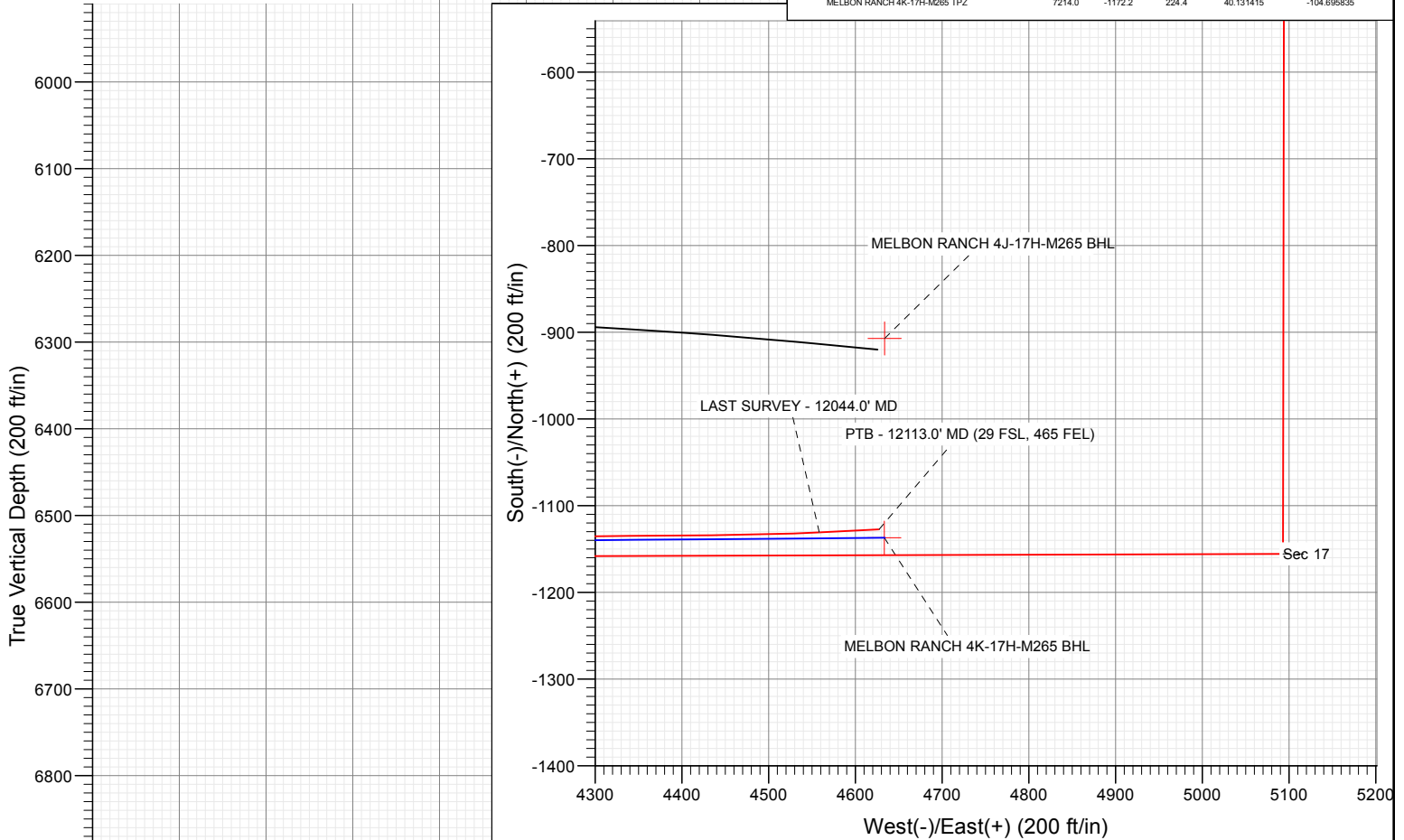
Project: Sec 17 T2N-R65W
Site: Melbon Ranch Pad
Well: MELBON RANCH 4K-17H-M265
Wellbore: OH
Design: FINAL

SECTION DETAILS

Sec	MD	Inc	Azi	TVD	+N/-S	+E/-W	Dleg	TFace	VSec	Target
1	0.0	0.00	0.00	0.0	0.0	0.0	0.00	0.00	0.0	
2	200.0	0.00	0.00	200.0	0.0	0.0	0.00	0.00	0.0	
3	750.8	11.02	206.62	747.4	-47.2	-23.6	2.00	206.62	-11.7	
4	6559.0	11.02	206.62	6448.6	-1039.3	-520.8	0.00	0.00	-258.2	
5	7777.1	92.49	89.54	7214.0	-1172.2	224.4	8.00	-116.21	497.3	MELBON RANCH 4K-17H-M265 TPZ
6	8627.5	92.49	89.54	7177.0	-1165.4	1074.0	0.00	0.00	1320.8	MELBON RANCH 4K 1074 TGT
7	8777.4	89.50	89.54	7174.4	-1164.2	1223.9	2.00	-180.00	1466.0	
8	10449.8	89.50	89.54	7189.1	-1150.9	2896.1	0.00	0.00	3086.9	
9	10512.7	90.75	89.54	7189.0	-1150.4	2959.0	2.00	0.00	3147.9	MELBON RANCH 4K 2959 TGT
10	12187.2	90.75	89.54	7167.0	-1137.0	4633.3	0.00	0.00	4770.7	MELBON RANCH 4K-17H-M265 BHL

FINAL
MELBON RANCH 4K-17H-M265
44157 156319
WELL @ 4979.0ft (Original Well Elev)
Ground Level @ 4956.0
North American Datum 1983
Well MELBON RANCH 4K-17H-M265, True North

Name	Type	Target	No Target (Freehand)	Azimuth	Origin	Type	N/S	E/W	From	TVD	Latitude	Longitude
MELBON RANCH 4K-17H-M265 BHL				7167.0			+N/-S	+E/-W		7167.0	-1137.0	-104.680088
MELBON RANCH 4K 1074 TGT				7177.0			-1165.4	1074.0		7177.0	-1165.4	-104.682797
MELBON RANCH 4K 2959 TGT				7189.0			-1150.4	2959.0		7189.0	-1150.4	-104.686055
MELBON RANCH 4K-17H-M265 TPZ				7214.0			-1172.2	224.4		7214.0	-1172.2	-104.695535



Azimuths to True North
Magnetic North: 8.13°
Magnetic Field
Strength: 52142.4nT
Dip Angle: 66.53°
Date: 11/10/2018
Model: HDGM_FILE



WELL DETAILS: MELBON RANCH 4K-17H-M265

+N/-S	+E/-W	Northing	Easting	Latitude	Longitude
0.0	0.0	1292910.35	3224623.87	40.134632	-104.696638



Survey Report

Company:	Crestone Peak Resources	Local Co-ordinate Reference:	Well MELBON RANCH 4K-17H-M265
Project:	Sec 17 T2N-R65W	TVD Reference:	WELL @ 4979.0ft (Original Well Elev)
Site:	Melbon Ranch Pad	MD Reference:	WELL @ 4979.0ft (Original Well Elev)
Well:	MELBON RANCH 4K-17H-M265	North Reference:	True
Wellbore:	OH	Survey Calculation Method:	Minimum Curvature
Design:	FINAL	Database:	USA EDM 5000 Multi Users DB

Project	Sec 17 T2N-R65W, Weld County, CO		
Map System:	US State Plane 1983	System Datum:	Mean Sea Level
Geo Datum:	North American Datum 1983		
Map Zone:	Colorado Northern Zone		

Site		Melbon Ranch Pad			
Site Position:		Northing:	1,292,990.36 ft	Latitude:	40.134852
From:	Map	Easting:	3,224,623.87 ft	Longitude:	-104.696635
Position Uncertainty:	0.0 ft	Slot Radius:	13.200 in	Grid Convergence:	0.52 °

Well	MELBON RANCH 4K-17H-M265					
Well Position	+N/-S	0.0 ft	Northing:	1,292,910.35 ft	Latitude:	40.134632
	+E/-W	0.0 ft	Easting:	3,224,623.87 ft	Longitude:	-104.696638
Position Uncertainty		0.0 ft	Wellhead Elevation:	ft	Ground Level:	4,956.0 ft

Wellbore	OH				
Magnetics	Model Name	Sample Date	Declination (°)	Dip Angle (°)	Field Strength (nT)
	HDGM_FILE	11/10/2018	8.13	66.53	52,142.40000000

Design	FINAL				
Audit Notes:					
Version:	1.0	Phase:	ACTUAL	Tie On Depth:	0.0
Vertical Section:	Depth From (TVD)	+N/-S	+E/-W	Direction	
	(ft)	(ft)	(ft)	(°)	
	0.0	0.0	0.0	103.79	

Survey Program	Date	11/13/2018			
From (ft)	To (ft)	Survey (Wellbore)	Tool Name	Description	
181.0	2,366.0	Survey #1 (OH)	GYRO-MWD	OWSG Gyro MWD	
2,451.0	12,113.0	Survey #2 (OH)	MWD+HDGM	OWSG MWD + HDGM	

Survey										
Measured Depth (ft)	Inclination (°)	Azimuth (°)	Vertical Depth (ft)	+N/-S (ft)	+E/-W (ft)	Vertical Section (ft)	Dogleg Rate (°/100ft)	Build Rate (°/100ft)	Formations / Comments	
0.0	0.00	0.00	0.0	0.0	0.0	0.0	0.00	0.00		
181.0	0.35	254.53	181.0	-0.1	-0.5	-0.5	0.19	0.19		
276.0	0.97	205.49	276.0	-1.0	-1.2	-0.9	0.83	0.65		
370.0	2.90	199.95	369.9	-3.9	-2.3	-1.3	2.06	2.05		
465.0	4.31	198.98	464.7	-9.5	-4.3	-1.9	1.49	1.48		
559.0	6.07	200.30	558.4	-17.5	-7.2	-2.8	1.88	1.87		
634.0	8.00	196.63	632.8	-26.3	-10.0	-3.5	2.64	2.57		
728.0	9.85	197.22	725.6	-40.2	-14.3	-4.3	1.97	1.97		
823.0	11.35	197.02	819.0	-56.9	-19.4	-5.3	1.58	1.58		
917.0	11.25	192.41	911.2	-74.7	-24.1	-5.6	0.97	-0.11		
1,012.0	10.74	198.57	1,004.5	-92.2	-28.9	-6.1	1.35	-0.54		
1,106.0	10.53	204.36	1,096.9	-108.3	-35.3	-8.4	1.16	-0.22		

Survey Report

Company:	Crestone Peak Resources	Local Co-ordinate Reference:	Well MELBON RANCH 4K-17H-M265
Project:	Sec 17 T2N-R65W	TVD Reference:	WELL @ 4979.0ft (Original Well Elev)
Site:	Melbon Ranch Pad	MD Reference:	WELL @ 4979.0ft (Original Well Elev)
Well:	MELBON RANCH 4K-17H-M265	North Reference:	True
Wellbore:	OH	Survey Calculation Method:	Minimum Curvature
Design:	FINAL	Database:	USA EDM 5000 Multi Users DB

Survey

Measured Depth (ft)	Inclination (°)	Azimuth (°)	Vertical Depth (ft)	+N/-S (ft)	+E/-W (ft)	Vertical Section (ft)	Dogleg Rate (°/100ft)	Build Rate (°/100ft)	Formations / Comments
1,201.0	11.64	211.22	1,190.1	-124.4	-43.8	-12.9	1.81	1.17	
1,295.0	11.33	208.68	1,282.2	-140.6	-53.1	-18.1	0.63	-0.33	
1,389.0	11.33	211.64	1,374.4	-156.6	-62.4	-23.3	0.62	0.00	
1,484.0	12.10	210.38	1,467.4	-173.1	-72.4	-29.0	0.85	0.81	
1,579.0	13.55	208.94	1,560.0	-191.4	-82.8	-34.8	1.56	1.53	
1,673.0	14.67	206.79	1,651.2	-211.7	-93.5	-40.3	1.32	1.19	
1,767.0	13.34	210.43	1,742.4	-231.7	-104.3	-46.1	1.70	-1.41	
1,862.0	11.00	212.28	1,835.2	-248.8	-114.7	-52.1	2.50	-2.46	
1,956.0	9.95	208.34	1,927.7	-263.5	-123.4	-57.0	1.35	-1.12	
2,051.0	9.00	204.59	2,021.4	-277.5	-130.4	-60.5	1.19	-1.00	
2,146.0	10.36	207.17	2,115.0	-291.8	-137.3	-63.8	1.50	1.43	
2,240.0	9.58	203.21	2,207.6	-306.6	-144.3	-67.1	1.10	-0.83	
2,335.0	9.79	204.66	2,301.3	-321.2	-150.8	-69.9	0.34	0.22	
2,366.0	9.64	203.26	2,331.8	-325.9	-152.9	-70.8	0.90	-0.48	
2,451.0	8.61	197.89	2,415.7	-338.5	-157.7	-72.4	1.57	-1.21	
2,545.0	9.49	208.08	2,508.6	-352.1	-163.5	-74.8	1.94	0.94	
2,639.0	10.68	216.34	2,601.1	-365.9	-172.3	-80.1	1.99	1.27	
2,734.0	12.22	222.58	2,694.2	-380.4	-184.3	-88.3	2.08	1.62	
2,828.0	10.72	221.09	2,786.4	-394.3	-196.8	-97.1	1.63	-1.60	
2,922.0	12.61	220.12	2,878.4	-408.8	-209.1	-105.7	2.02	2.01	
3,017.0	14.63	218.01	2,970.7	-426.2	-223.2	-115.2	2.19	2.13	
3,112.0	15.29	210.89	3,062.5	-446.4	-237.0	-123.8	2.05	0.69	
3,206.0	14.46	203.51	3,153.4	-467.8	-248.1	-129.4	2.20	-0.88	
3,301.0	13.40	203.25	3,245.6	-488.8	-257.2	-133.2	1.12	-1.12	
3,395.0	11.82	202.02	3,337.3	-507.7	-265.1	-136.4	1.70	-1.68	
3,489.0	10.24	200.35	3,429.6	-524.4	-271.6	-138.7	1.71	-1.68	
3,584.0	8.53	199.56	3,523.3	-539.0	-276.9	-140.4	1.81	-1.80	
3,679.0	8.48	206.76	3,617.3	-551.9	-282.4	-142.7	1.12	-0.05	
3,797.0	10.42	216.26	3,733.7	-568.3	-292.6	-148.7	2.10	1.64	
3,892.0	11.21	213.36	3,827.0	-582.9	-302.8	-155.1	1.01	0.83	
3,986.0	11.16	204.65	3,919.2	-598.8	-311.6	-159.9	1.80	-0.05	
4,081.0	12.31	202.19	4,012.2	-616.5	-319.3	-163.1	1.32	1.21	
4,175.0	14.02	199.29	4,103.7	-636.6	-326.8	-165.6	1.95	1.82	
4,269.0	13.45	198.77	4,195.0	-657.7	-334.1	-167.7	0.62	-0.61	
4,364.0	12.35	198.77	4,287.6	-677.8	-340.9	-169.5	1.16	-1.16	
4,458.0	10.59	198.94	4,379.8	-695.4	-346.9	-171.2	1.87	-1.87	
4,553.0	8.66	196.22	4,473.4	-710.6	-351.8	-172.3	2.09	-2.03	
4,647.0	9.45	200.52	4,566.3	-724.6	-356.5	-173.5	1.11	0.84	
4,741.0	8.61	199.20	4,659.1	-738.5	-361.5	-175.0	0.92	-0.89	
4,835.0	9.27	206.94	4,751.9	-751.9	-367.2	-177.4	1.46	0.70	
4,930.0	8.75	205.53	4,845.8	-765.2	-373.8	-180.6	0.59	-0.55	
5,025.0	9.84	205.27	4,939.5	-779.1	-380.4	-183.7	1.15	1.15	
5,120.0	10.02	209.40	5,033.1	-793.6	-387.9	-187.6	0.77	0.19	
5,214.0	10.06	210.10	5,125.7	-807.8	-396.0	-192.1	0.14	0.04	
5,308.0	11.60	208.35	5,218.0	-823.2	-404.6	-196.7	1.68	1.64	
5,402.0	12.48	212.65	5,309.9	-840.1	-414.6	-202.4	1.34	0.94	
5,496.0	11.69	209.93	5,401.8	-856.9	-424.8	-208.3	1.04	-0.84	
5,591.0	10.06	205.36	5,495.1	-872.8	-433.2	-212.7	1.94	-1.72	
5,686.0	10.77	210.98	5,588.6	-887.9	-441.3	-217.0	1.30	0.75	
5,780.0	10.85	211.33	5,680.9	-903.0	-450.4	-222.2	0.11	0.09	
5,874.0	11.43	209.75	5,773.1	-918.6	-459.7	-227.5	0.70	0.62	
5,969.0	11.65	214.50	5,866.2	-934.7	-469.8	-233.4	1.03	0.23	
6,063.0	12.00	214.15	5,958.2	-950.6	-480.6	-240.2	0.38	0.37	

Survey Report

Company:	Crestone Peak Resources	Local Co-ordinate Reference:	Well MELBON RANCH 4K-17H-M265
Project:	Sec 17 T2N-R65W	TVD Reference:	WELL @ 4979.0ft (Original Well Elev)
Site:	Melbon Ranch Pad	MD Reference:	WELL @ 4979.0ft (Original Well Elev)
Well:	MELBON RANCH 4K-17H-M265	North Reference:	True
Wellbore:	OH	Survey Calculation Method:	Minimum Curvature
Design:	FINAL	Database:	USA EDM 5000 Multi Users DB

Survey									
Measured Depth (ft)	Inclination (°)	Azimuth (°)	Vertical Depth (ft)	+N/-S (ft)	+E/-W (ft)	Vertical Section (ft)	Dogleg Rate (°/100ft)	Build Rate (°/100ft)	Formations / Comments
6,158.0	11.78	209.14	6,051.2	-967.2	-490.9	-246.2	1.11	-0.23	
6,252.0	11.60	200.87	6,143.2	-984.4	-498.9	-249.9	1.79	-0.19	
6,347.0	9.32	201.31	6,236.7	-1,000.5	-505.1	-252.1	2.40	-2.40	
6,441.0	9.10	205.36	6,329.4	-1,014.3	-511.1	-254.6	0.73	-0.23	
6,536.0	9.49	185.76	6,423.2	-1,028.9	-515.1	-255.0	3.34	0.41	
6,583.0	13.05	169.50	6,469.3	-1,038.0	-514.5	-252.3	10.08	7.57	
6,630.0	17.01	159.74	6,514.7	-1,049.7	-511.2	-246.2	9.97	8.43	
6,677.0	20.00	150.86	6,559.3	-1,063.2	-504.9	-236.9	8.73	6.36	
6,724.0	23.64	142.34	6,602.9	-1,077.6	-495.2	-224.0	10.25	7.74	
6,771.0	27.73	138.38	6,645.3	-1,093.3	-482.2	-207.7	9.43	8.70	
6,819.0	31.64	132.14	6,687.0	-1,110.1	-465.4	-187.4	10.37	8.15	
6,866.0	36.08	125.90	6,726.0	-1,126.5	-445.0	-163.7	11.99	9.45	
6,914.0	40.03	122.30	6,763.8	-1,143.0	-420.5	-135.9	9.44	8.23	
6,961.0	43.29	120.45	6,798.9	-1,159.3	-393.8	-106.2	7.41	6.94	
7,008.0	44.96	116.59	6,832.6	-1,174.9	-365.1	-74.5	6.73	3.55	
7,055.0	48.34	113.78	6,864.9	-1,189.4	-334.2	-41.0	8.40	7.19	
7,102.0	50.63	110.70	6,895.4	-1,202.9	-301.1	-5.7	6.97	4.87	
7,149.0	51.99	104.37	6,924.8	-1,213.9	-266.1	30.9	10.90	2.89	
7,197.0	53.48	96.37	6,953.9	-1,220.8	-228.6	69.0	13.62	3.10	
7,244.0	55.50	89.25	6,981.3	-1,222.6	-190.4	106.5	13.05	4.30	
7,291.0	57.88	88.02	7,007.1	-1,221.7	-151.2	144.4	5.52	5.06	
7,338.0	58.49	87.14	7,031.8	-1,220.0	-111.3	182.7	2.05	1.30	
7,386.0	59.59	87.85	7,056.5	-1,218.2	-70.2	222.2	2.62	2.29	
7,433.0	61.88	87.94	7,079.5	-1,216.7	-29.2	261.7	4.88	4.87	
7,480.0	64.34	86.70	7,100.8	-1,214.7	12.7	301.9	5.74	5.23	
7,527.0	66.84	85.39	7,120.2	-1,211.8	55.4	342.6	5.89	5.32	
7,575.0	69.26	84.86	7,138.1	-1,208.0	99.7	384.8	5.14	5.04	
7,622.0	72.07	85.83	7,153.7	-1,204.4	143.9	426.9	6.29	5.98	
7,670.0	75.15	86.53	7,167.2	-1,201.3	189.9	470.7	6.57	6.42	
7,705.6	77.47	86.99	7,175.7	-1,199.4	224.4	503.8	6.65	6.53	TPZ - 7705.6' MD (7 FNL, 460 FWL)
7,717.0	78.22	87.14	7,178.1	-1,198.8	235.5	514.5	6.65	6.53	
7,764.0	81.34	85.91	7,186.4	-1,196.0	281.7	558.7	7.12	6.64	
7,811.0	85.25	85.03	7,191.9	-1,192.3	328.2	603.0	8.52	8.32	
7,859.0	88.07	85.56	7,194.7	-1,188.4	376.0	648.4	5.98	5.87	
7,953.0	90.97	86.88	7,195.5	-1,182.2	469.7	738.0	3.39	3.09	
8,048.0	91.58	86.70	7,193.4	-1,176.9	564.6	828.8	0.67	0.64	
8,142.0	92.07	86.00	7,190.4	-1,170.9	658.3	918.5	0.91	0.52	
8,237.0	92.46	86.97	7,186.6	-1,165.1	753.1	1,009.1	1.10	0.41	
8,331.0	91.80	88.73	7,183.1	-1,161.5	846.9	1,099.4	2.00	-0.70	
8,426.0	91.98	89.08	7,180.0	-1,159.7	941.9	1,191.2	0.41	0.19	
8,520.0	90.92	89.52	7,177.6	-1,158.6	1,035.8	1,282.1	1.22	-1.13	
8,615.0	90.62	91.01	7,176.3	-1,159.0	1,130.8	1,374.5	1.60	-0.32	
8,709.0	91.01	90.22	7,175.0	-1,160.0	1,224.8	1,466.0	0.94	0.41	
8,803.0	89.78	91.71	7,174.3	-1,161.6	1,318.8	1,557.7	2.06	-1.31	
8,898.0	88.95	91.28	7,175.4	-1,164.1	1,413.7	1,650.5	0.98	-0.87	
8,992.0	89.03	90.92	7,177.0	-1,165.9	1,507.7	1,742.2	0.39	0.09	
9,087.0	89.52	91.01	7,178.3	-1,167.5	1,602.7	1,834.8	0.52	0.52	
9,181.0	89.60	89.25	7,179.0	-1,167.7	1,696.7	1,926.1	1.87	0.09	
9,276.0	90.75	90.84	7,178.7	-1,167.8	1,791.7	2,018.4	2.07	1.21	
9,371.0	89.74	87.94	7,178.3	-1,166.8	1,886.7	2,110.4	3.23	-1.06	
9,465.0	90.40	88.90	7,178.2	-1,164.2	1,980.6	2,201.0	1.24	0.70	
9,559.0	89.87	89.34	7,177.9	-1,162.7	2,074.6	2,292.0	0.73	-0.56	
9,654.0	90.48	89.34	7,177.7	-1,161.6	2,169.6	2,384.0	0.64	0.64	

Survey Report

Company:	Crestone Peak Resources	Local Co-ordinate Reference:	Well MELBON RANCH 4K-17H-M265
Project:	Sec 17 T2N-R65W	TVD Reference:	WELL @ 4979.0ft (Original Well Elev)
Site:	Melbon Ranch Pad	MD Reference:	WELL @ 4979.0ft (Original Well Elev)
Well:	MELBON RANCH 4K-17H-M265	North Reference:	True
Wellbore:	OH	Survey Calculation Method:	Minimum Curvature
Design:	FINAL	Database:	USA EDM 5000 Multi Users DB

Survey

Measured Depth (ft)	Inclination (°)	Azimuth (°)	Vertical Depth (ft)	+N/-S (ft)	+E/-W (ft)	Vertical Section (ft)	Dogleg Rate (°/100ft)	Build Rate (°/100ft)	Formations / Comments
9,749.0	90.18	90.04	7,177.1	-1,161.1	2,264.6	2,476.1	0.80	-0.32	
9,843.0	89.60	89.25	7,177.3	-1,160.5	2,358.6	2,567.3	1.04	-0.62	
9,937.0	89.08	89.17	7,178.4	-1,159.2	2,452.6	2,658.2	0.56	-0.55	
10,031.0	88.86	89.08	7,180.1	-1,157.8	2,546.6	2,749.1	0.25	-0.23	
10,126.0	88.73	88.55	7,182.1	-1,155.8	2,641.5	2,840.9	0.57	-0.14	
10,220.0	87.76	88.37	7,184.9	-1,153.3	2,735.4	2,931.5	1.05	-1.03	
10,314.0	86.70	90.22	7,189.5	-1,152.2	2,829.3	3,022.4	2.27	-1.13	
10,408.0	88.51	90.66	7,193.4	-1,152.9	2,923.2	3,113.8	1.98	1.93	
10,503.0	89.82	91.10	7,194.8	-1,154.3	3,018.2	3,206.4	1.45	1.38	
10,598.0	92.02	90.84	7,193.3	-1,156.0	3,113.2	3,299.0	2.33	2.32	
10,692.0	92.77	89.87	7,189.3	-1,156.5	3,207.1	3,390.3	1.30	0.80	
10,787.0	92.02	88.29	7,185.4	-1,155.0	3,302.0	3,482.1	1.84	-0.79	
10,881.0	90.22	88.90	7,183.5	-1,152.7	3,395.9	3,572.8	2.02	-1.91	
10,976.0	91.06	88.37	7,182.5	-1,150.4	3,490.9	3,664.5	1.05	0.88	
11,070.0	90.31	86.27	7,181.3	-1,146.0	3,584.8	3,754.6	2.37	-0.80	
11,165.0	90.44	88.29	7,180.7	-1,141.5	3,679.7	3,845.7	2.13	0.14	
11,260.0	89.78	88.02	7,180.5	-1,138.5	3,774.6	3,937.2	0.75	-0.69	
11,354.0	90.75	89.52	7,180.1	-1,136.5	3,868.6	4,028.0	1.90	1.03	
11,448.0	90.04	90.31	7,179.5	-1,136.3	3,962.6	4,119.2	1.13	-0.76	
11,543.0	91.06	89.96	7,178.5	-1,136.5	4,057.6	4,211.5	1.14	1.07	
11,637.0	91.98	89.87	7,176.0	-1,136.4	4,151.6	4,302.8	0.98	0.98	
11,731.0	92.64	89.25	7,172.3	-1,135.7	4,245.5	4,393.8	0.96	0.70	
11,826.0	91.63	89.52	7,168.7	-1,134.7	4,340.4	4,485.8	1.10	-1.06	
11,920.0	90.48	89.87	7,167.0	-1,134.2	4,434.4	4,576.9	1.28	-1.22	
12,014.0	90.13	87.50	7,166.5	-1,132.0	4,528.4	4,667.7	2.55	-0.37	
12,044.0	90.62	87.23	7,166.3	-1,130.6	4,558.3	4,696.4	1.86	1.63	LAST SURVEY - 12044.0' MD
12,113.0	90.62	87.23	7,165.5	-1,127.3	4,627.2	4,762.5	0.00	0.00	PTB - 12113.0' MD (29 FSL, 465 FEL)

Survey Report

Company:	Crestone Peak Resources	Local Co-ordinate Reference:	Well MELBON RANCH 4K-17H-M265
Project:	Sec 17 T2N-R65W	TVD Reference:	WELL @ 4979.0ft (Original Well Elev)
Site:	Melbon Ranch Pad	MD Reference:	WELL @ 4979.0ft (Original Well Elev)
Well:	MELBON RANCH 4K-17H-M265	North Reference:	True
Wellbore:	OH	Survey Calculation Method:	Minimum Curvature
Design:	FINAL	Database:	USA EDM 5000 Multi Users DB

Targets									
Target Name	Dip Angle	Dip Dir.	TVD	+N/-S	+E/-W	Northing	Easting	Latitude	Longitude
- hit/miss target	(°)	(°)	(ft)	(ft)	(ft)	(ft)	(ft)		
- Shape									
MELBON RANCH 4K 1C	0.00	0.00	7,177.0	-1,165.4	1,074.0	1,291,754.71	3,225,708.38	40.131433	-104.692797
- actual wellpath misses target center by 7.0ft at 8558.2ft MD (7177.0 TVD, -1158.5 N, 1074.0 E)									
- Point									
MELBON RANCH 4K-17	0.00	0.52	7,214.0	-1,172.2	224.4	1,291,740.22	3,224,858.90	40.131415	-104.695835
- actual wellpath misses target center by 46.0ft at 7715.1ft MD (7177.7 TVD, -1198.9 N, 233.6 E)									
- Point									
MELBON RANCH 4K-17	0.00	0.53	7,167.0	-1,137.0	4,633.3	1,291,815.38	3,229,267.26	40.131510	-104.680068
- actual wellpath misses target center by 11.5ft at 12113.0ft MD (7165.5 TVD, -1127.3 N, 4627.2 E)									
- Point									
MELBON RANCH 4K 2C	0.00	0.00	7,189.0	-1,150.4	2,959.0	1,291,786.84	3,227,593.17	40.131474	-104.686055
- actual wellpath misses target center by 6.0ft at 10443.7ft MD (7194.2 TVD, -1153.3 N, 2958.9 E)									
- Point									

Design Annotations					
Measured Depth	Vertical Depth	Local Coordinates			
(ft)	(ft)	+N/-S (ft)	+E/-W (ft)	Comment	
7,705.6	7,175.7	-1,199.4	224.4	TPZ - 7705.6' MD (7 FNL, 460 FWL)	
12,044.0	7,166.3	-1,130.6	4,558.3	LAST SURVEY - 12044.0' MD	
12,113.0	7,165.5	-1,127.3	4,627.2	PTB - 12113.0' MD (29 FSL, 465 FEL)	

Checked By: _____ Approved By: _____ Date: _____